

RECOMMENDED MOUNTING HOLE PATTERN FOR .063 THICK P.C. BOARD

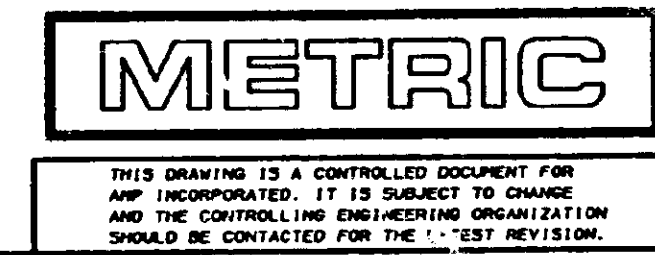
- 1. POST TO WITHSTAND 13 NEWTONS (3LBS.) MIN. AXIAL FORCE IN BOTH DIRECTIONS SHOWN WITHOUT DISLODGING.
- 2. TOLERANCES APPLY TO SOLDER SIDE OF BOARD.
- 3. MEASURED AT SURFACE -A-
- 4. PLASTIC FLASH PERMITTED IN THIS AREA.
- 5. PARTS COMPLY WITH AMP SOLDERABILITY SPEC. NO. 109-11-2.
- 6. ONE HOLE MAY BE UNDERSIZED (.051/.046 DIA.) FOR ASSEMBLY RETENTION DURING WAVE SOLDERING.
- 7. MATERIAL: HEADER-THERMOPLASTIC POLYESTER
GLASS-FILLED 94V-0 (NATURAL)
POST-COPPER ALLOY (TIN PLATED)
- 8. COORDINATE DIMENSION APPLIES FROM CENTER OF ACTUAL FEATURE.
- 9. PLASTIC BURRS CAUSED BY CUT-OFF TOOLING ARE PERMITTED WITHIN THE MAXIMUM TOLERANCE ENVELOPE.
- 10. POST TO BE MEASURED WHEN STRIP IS HELD FLAT.
- 11. POST MUST WITHSTAND TWO 90° BENDS AGAINST EXTRUSION WITHOUT BREAKING.
- 12. DIMENSION SHOULD BE .175 MIN WHEN MATING WITH A MTA 156 CONNECTOR ASSEMBLY OR A SL-156 CONNECTOR ASSEMBLY.
- 13. PIN BURR OF .005 MAX. VERTICAL AND .003 MAX. HORIZONTAL PERMITTED AT POST TIPS ON BOTH ENDS.

REV	DATE	DESCRIPTION	DATE	APPD
4				
POST NUMBER OMITTED		PART NUMBER		

641823-2 SHOWN

	MM	IN	MM
.060	1.52	1.872	47.55
.051	1.30	.750	19.05
.045	1.17	.450	11.43
.045	1.14	.400	10.16
.030	0.76	.312	7.92
.019	0.48	.300	7.62
.015	0.38	.180	4.57
.012	0.30	.175	4.45
.010	0.25	.156	3.96
.008	0.20	.125	3.18
.005	0.13	.083	2.11
.003	0.08	.078	1.98
.001	0.03	.063	1.60
IN	MM	IN	MM

CONVERSION TABLE



DO NOT SCALE PRINT. UNLESS SPECIFIED DIMENSIONS IN MM (INCHES) TOLERANCES ON: 2 PLC DEC ± .005 ANGLES ± °		DR 9-24-92 N. GANNON <i>NSD</i> / CHK 9-24-92 R. SWING <i>RS</i> / APPD 10-7-92 R. SPEER <i>RS</i>		AMP Incorporated Harrisburg, PA 17105-3608	
MATERIAL:		PRODUCT SPEC:		NAME: MTA 156 HEADER ASSEMBLY, FRICTION LOCK, STRAIGHT .045 ROUND POST, TIN PLATED, 12 POSITION, OMITTED POST	
FINISH:		APPLICATION SPEC:		SIZE: D	CAGE CODE: 00779
THIS DRAWING IS A CONTROLLED DOCUMENT FOR AMP INCORPORATED. IT IS SUBJECT TO CHANGE AND THE CONTROLLING ENGINEERING ORGANIZATION SHOULD BE CONTACTED FOR THE LATEST REVISION.		WEIGHT:		DRAWING NO: C-641823	SHEET: 1 OF 1