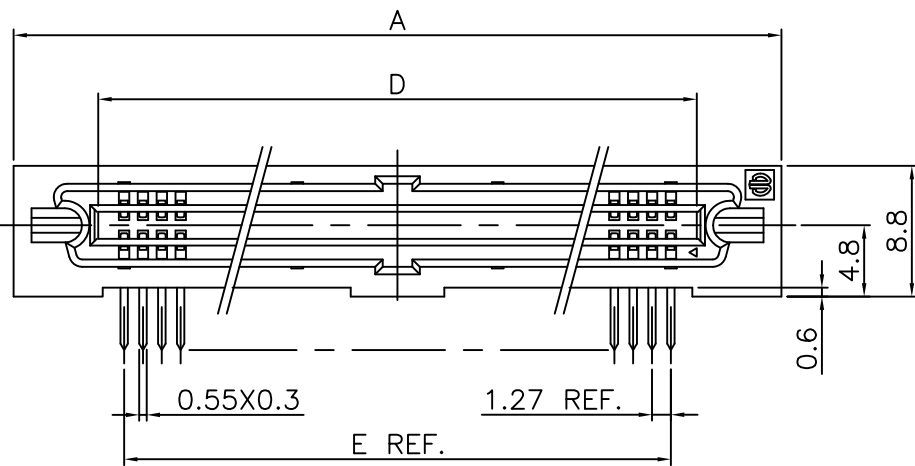
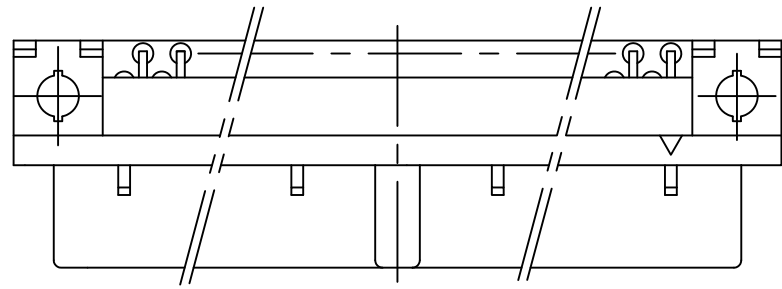
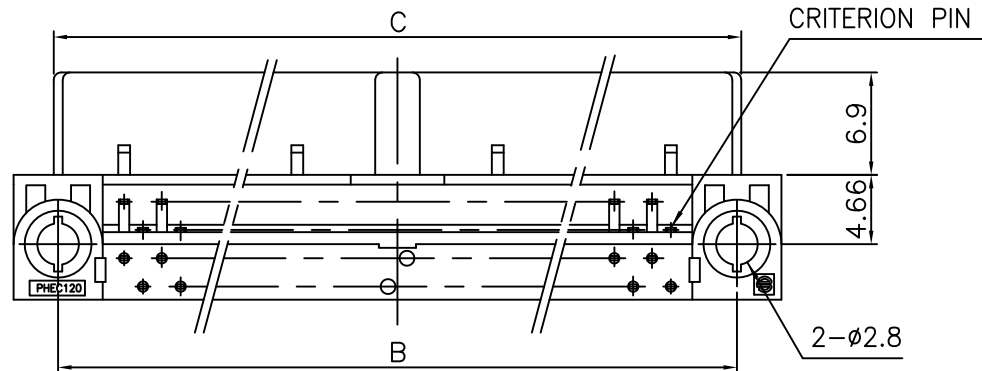


PRODUCT NO.

JSC 96359

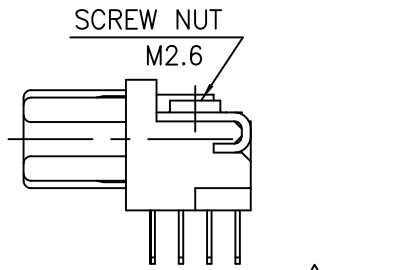


NO. OF CONTACTS:40,60,68,80,100,120

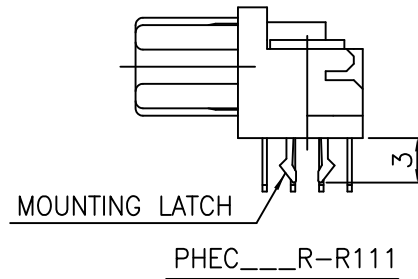


NOTES

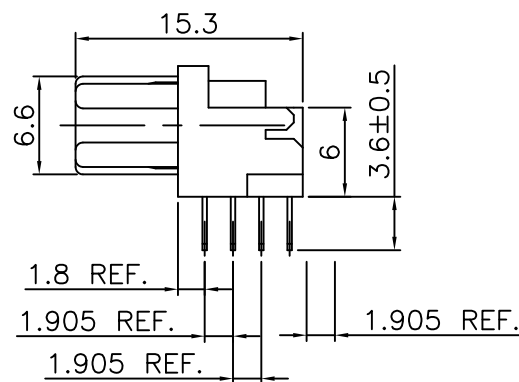
- 1.BODY, LOCATOR MATERIAL : PBT GLASS FILLED (UL94V-0), COLOR BLACK
- 2.TERMINAL MATERIAL : PHOSPHOR BRONZE
- 3.MOUNTING LATCH MATERIAL : PHOSPHOR BRONZE
- 4.SCREW NUT : STEEL
- 5.TERMINAL FINISH  
CONTACT AREA : GOLD FLASH 0.1μm min. OVER NICKEL UNDERLAYER  
SOLDER TAILS : PURE Sn 2μm min. OVER NICKEL UNDERLAYER
- 6.MOUNTING LATCH FINISH : PURE Sn 2μm min. OVER NICKEL UNDERLAYER
- 7.SCREW NUT FINISH : NICKEL
- 8.THIS PRODUCT MEETS EUROPEAN UNION DIRECTIVES AND OTHER COUNTRY REGULATIONS AS DESCRIBED IN GS-22-008
- 9.THE HOUSING WILL WITHSTAND EXPOSURE TO 260 DEGREE PEAK TEMPERATURE FOR 10 SECONDS IN A WAVE SOLDER APPLICATION WITH A 1.6mm MINIMUM THICK CIRCUIT BOARD.



SCREW NUT M2.6  
PHEC\_\_R-R112 Obsolete

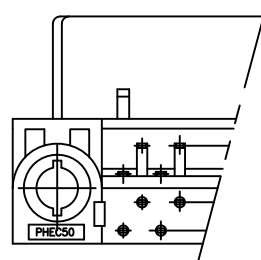


MOUNTING LATCH  
PHEC\_\_R-R111



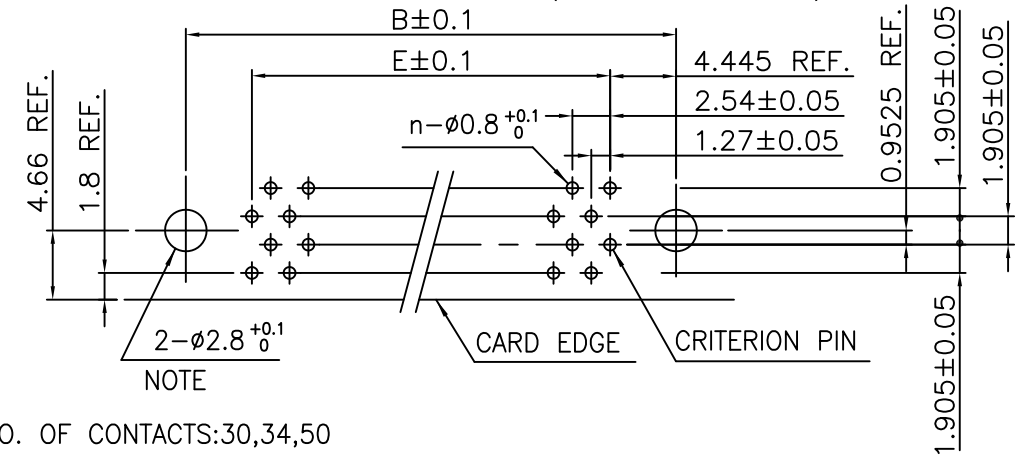
PHEC\_\_R-R110

NO. OF CONTACTS:30,34,50

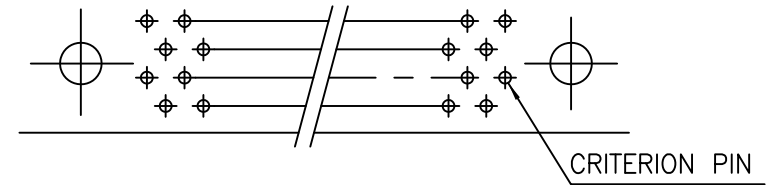


RECOMMENDED PC BOARD  
THICKNESS:1.6 ±0.2  
HOLE PATTERN (COMPONENT SIDE)

NO. OF CONTACTS:40,60,68,80,100,120 (n:NO. OF CONTACTS)



NO. OF CONTACTS:30,34,50



NOTE : THROUGH-HOLES FOR MOUNTING LATCHES ALSO SHOULD BE PLATED.

CAT. NO.	NO. OF CONTACTS (MATING SIDE)	DIMENSIONS				
		A	B	C	D	E
PHEC30R-R11_LF	15/ROW X 2 ROWS	32.67	26.67	27.26	21.26	17.78
PHEC34R-R11_LF	17/ROW X 2 ROWS	35.21	29.21	29.80	23.80	20.32
PHEC40R-R11_LF	20/ROW X 2 ROWS	39.02	33.02	33.61	27.61	24.13
PHEC50R-R11_LF	25/ROW X 2 ROWS	45.37	39.37	39.96	33.96	30.48
PHEC60R-R11_LF	30/ROW X 2 ROWS	51.72	45.72	46.31	40.31	36.83
PHEC68R-R11_LF	34/ROW X 2 ROWS	56.80	50.80	51.39	45.39	41.91
PHEC80R-R11_LF	40/ROW X 2 ROWS	64.42	58.42	59.01	53.01	49.53
PHEC100R-R11_LF	50/ROW X 2 ROWS	77.12	71.12	71.71	65.71	62.23
PHEC120R-R11_LF	60/ROW X 2 ROWS	89.82	83.82	84.41	78.41	74.93

mat'l. code		surface		tolerance		projection		product family		CODE	
---		ISO 1302		ISO 406		MM		PHEC		JP	
ltr		description		ecn no		dr		date		title	
A		RELEASED		J05-0186		S.O		3/29/'05		PRINTED CIRCUIT CONNECTOR	
B		REVISED		J07-0047		S.O		1/25/'07		(CAT.NO.PHEC __ _ R-R11_LF)	
C		REVISED		J07-0458		S.O		9/11/'07		dwg no	
D		EOL of R112LF		ELX-J-17067		S.W		2/27/'14		sheet 1 of 1 size	
						dr		S.Watanabe		2/27/'14	
						enr		S.Watanabe		2/27/'14	
						chr		K.Ito		2/27/'14	
						appd		Y.Kameda		2/27/'14	
sheet index		revision sheet		D		1				Rev. D	