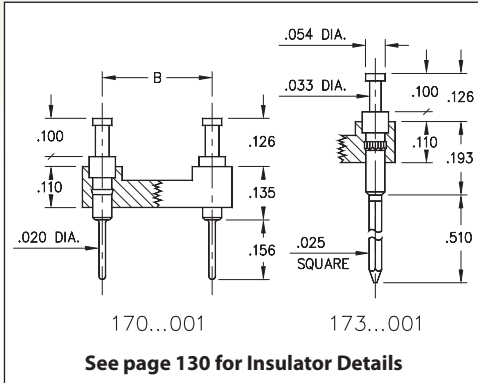
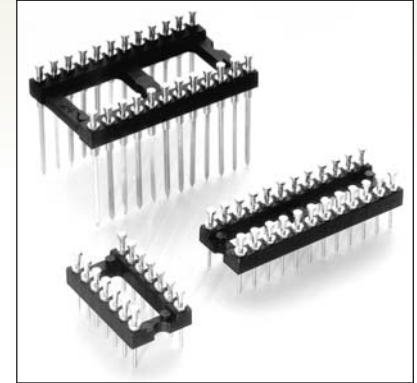



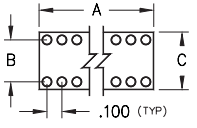

DUAL-IN-LINE HEADERS

SERIES 170, 173 • TURRET, SOLDER TAIL & WRAPOST • OPEN FRAME



- Series 170 & 173 DIL headers are equipped with turret heads for wiring applications
- Series 170 terminations are pluggable .020" dia. solder tails MM #0700, See page 216 for details. Series 173 terminations are three level wraposts MM #0730. See page 228 for details
- Insulators are high temperature thermoplastic, suitable for all soldering operations
- For Electrical, Mechanical and Environmental Data, see page 264 for details



Total number of pins	Pin Configuration			Quantity per tube	ORDERING INFORMATION		 XX=Plating Code See Below		
	A	B	C		Solder Tail	3 Level Wrapost			
									
10	0.5	0.2	0.3	41	170-XX-210-00-001000	173-XX-210-00-001000			
4	0.2	0.3	0.4	102	170-XX-304-00-001000	173-XX-304-00-001000			
6	0.3	0.3	0.4	67	170-XX-306-00-001000	173-XX-306-00-001000			
8	0.4	0.3	0.4	50	170-XX-308-00-001000	173-XX-308-00-001000			
10	0.5	0.3	0.4	40	170-XX-310-00-001000	173-XX-310-00-001000			
14	0.7	0.3	0.4	28	170-XX-314-00-001000	173-XX-314-00-001000			
16	0.8	0.3	0.4	25	170-XX-316-00-001000	173-XX-316-00-001000			
18	0.9	0.3	0.4	22	170-XX-318-00-001000	173-XX-318-00-001000			
20	1.0	0.3	0.4	20	170-XX-320-00-001000	173-XX-320-00-001000			
22	1.1	0.3	0.4	18	170-XX-322-00-001000	173-XX-322-00-001000			
24	1.2	0.3	0.4	16	170-XX-324-00-001000	173-XX-324-00-001000			
28	1.4	0.3	0.4	14	170-XX-328-00-001000	173-XX-328-00-001000			
20	1.0	0.4	0.5	20	170-XX-420-00-001000	173-XX-420-00-001000			
22	1.1	0.4	0.5	18	170-XX-422-00-001000	173-XX-422-00-001000			
24	1.2	0.4	0.5	16	170-XX-424-00-001000	173-XX-424-00-001000			
28	1.4	0.4	0.5	14	170-XX-428-00-001000	173-XX-428-00-001000			
32	1.6	0.4	0.5	12	170-XX-432-00-001000	173-XX-432-00-001000			
24	1.2	0.6	0.7	16	170-XX-624-00-001000	173-XX-624-00-001000			
28	1.4	0.6	0.7	14	170-XX-628-00-001000	173-XX-628-00-001000			
32	1.6	0.6	0.7	12	170-XX-632-00-001000	173-XX-632-00-001000			
36	1.8	0.6	0.7	11	170-XX-636-00-001000	173-XX-636-00-001000			
40	2.0	0.6	0.7	10	170-XX-640-00-001000	173-XX-640-00-001000			
42	2.1	0.6	0.7	9	170-XX-642-00-001000	173-XX-642-00-001000			
48	2.4	0.6	0.7	8	170-XX-648-00-001000	173-XX-648-00-001000			
50	2.5	0.6	0.7	8	170-XX-650-00-001000	173-XX-650-00-001000			
52	2.6	0.6	0.7	7	170-XX-652-00-001000	173-XX-652-00-001000			
50	2.5	0.9	1.0	8	170-XX-950-00-001000	173-XX-950-00-001000			
52	2.6	0.9	1.0	7	170-XX-952-00-001000	173-XX-952-00-001000			
64	3.2	0.9	1.0	6	170-XX-964-00-001000	173-XX-964-00-001000			
					SPECIFY PLATING CODE XX =	10 ◆	90	40 ◆	
					Pin Plating 	10 μ" Au	200 μ" Sn/Pb	200 μ" Sn	