

MATERIALS AND FINISHES

BODY ZINC ALLOY
PLATED NICKEL

CENTER CONTACT PHOSPHOR BRONZE
PLATED GOLD

INSULATOR POLYPROPYLENE (94-V0)

MOUNTING POST PHOSPHOR BRONZE
PLATED TIN

SOLDER TAIL COPPER OVER STEEL
PLATED TIN

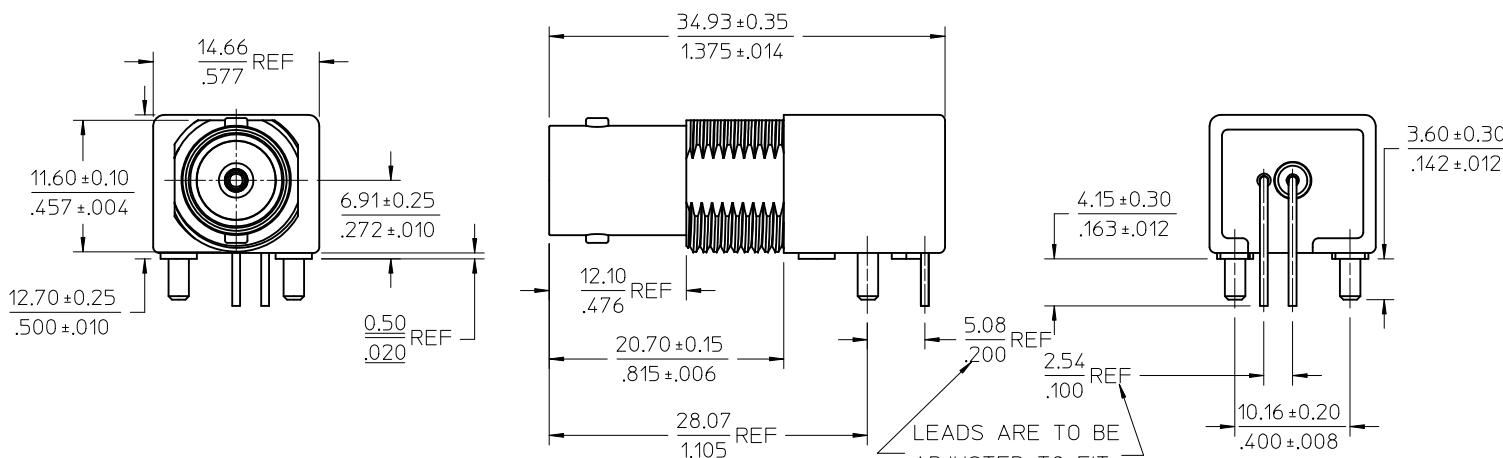
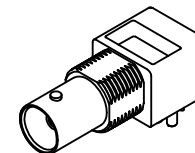
JAM NUT BRASS
PLATED NICKEL

LOCK WASHER PHOSPHOR BRONZE
PLATED NICKEL

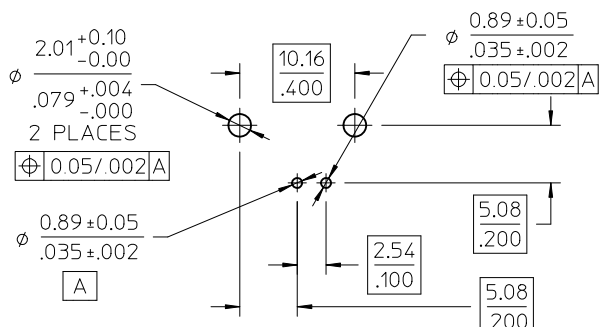
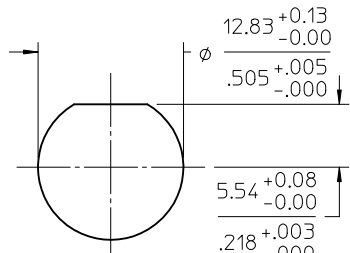
BNC JACK
75 OHM
INTERFACE

1/2-28 UNEF-2A

TOP VIEW



LEADS ARE TO BE
ADJUSTED TO FIT
PCB PATTERN



RECOMMENDED PCB HOLE
CONFIGURATION

RECOMMENDED MOUNTING HOLE
PANEL THICKNESS: 5.50 (.216) MAX
RECOMMENDED MOUNTING TORQUE:
1.36 N-m (12 INCH LBS) MAX

73171-4340	QTY (1) OF 73101-0400 IN SINGLE BAG WITH LABEL
73101-0401	WITH JAM NUT AND WASHER
73101-0400	WITHOUT JAM NUT AND WASHER
PART NO.	DESCRIPTION

PS-89675-1030	PRODUCT SPECIFICATION
SPECIFICATION	DESCRIPTION

CHG: ADD 73171-4340
EC NO: URF2012-0419
DRAWN BY: DRWINBOMALLEY 2012/01/17
CHKD BY: CHKD:AZR 2012/01/17
APPR: JIENER 2012/01/24

QUALITY SYMBOLS
▽=0
▽=0

DESCRIPTION
A3

GENERAL TOLERANCES (UNLESS SPECIFIED)	DIMENSION STYLE MM/IN	SCALE	DESIGN UNITS METRIC	THIRD ANGLE PROJECTION
4 PLACES ± --- ± ---	DRAWN BY MICHAEL	DATE 2007/06/07	TITLE BNC JACK,R/A PCB,75 OHMS DIE CAST, RECEPTACLE BNC-J/RA/PCB	MOLEX INCORPORATED DOCUMENT NO. SD-73101-040 SHEET NO. 1 OF 1
3 PLACES ± --- ± ---	CHECKED BY KERRIE	DATE 2007/06/07		
2 PLACES ± --- ± ---	APPROVED BY MISEN	DATE 2007/06/07		
1 PLACE ± --- ± ---	MATERIAL NO. SEE TABLE			
ANGULAR ± ---°	SIZE C	THIS DRAWING CONTAINS INFORMATION THAT IS PROPRIETARY TO MOLEX INCORPORATED AND SHOULD NOT BE USED WITHOUT WRITTEN PERMISSION		