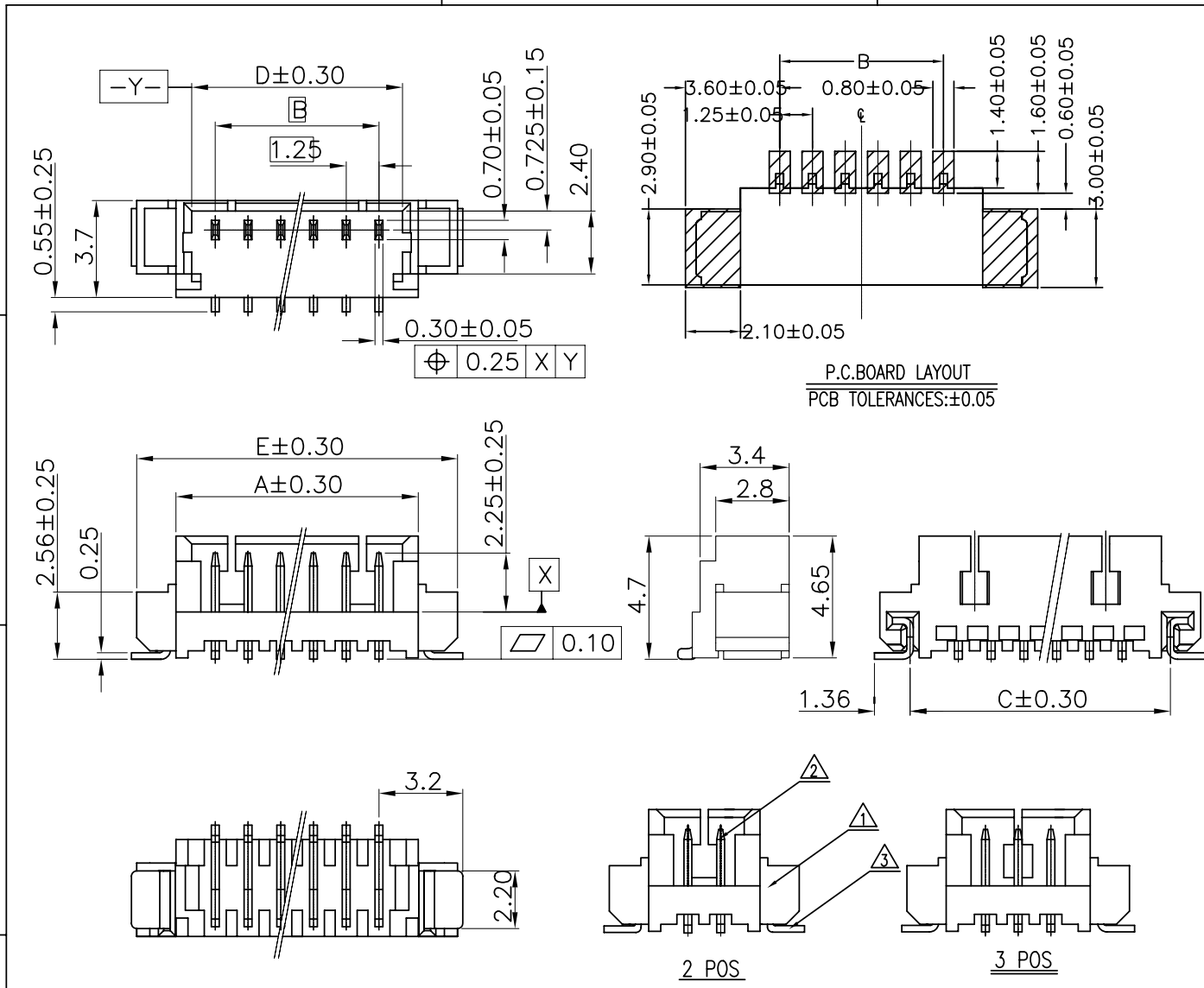




Copyright FCI.



NOTES

- SPECIFICATIONS
 Current Rating: 1A AC,DC
 Voltage Rating: 125V AC,DC
 Temperature Range: $-40^{\circ}\text{C} \sim +105^{\circ}\text{C}$
 Contact Resistance: 20m Ω Max.
 Insulation Resistance: 100M Ω Min.
 Withstanding Voltage: 500V AC/minute
- Material & Finish:
 Housing: Natural Thermoplastic, UL94V-0
 Contact and metal hold-down: Phosphor Bronze
 Plating of contact: Matte Tin or gold plating over Nickel
 Plating of metal hold-down: Matte Tin over Nickel
- Crimping application hand tool P/N: 10118656-1000
- Ordering Information & Dimensions:
 10114828- X X X XX X LF
 Material: LCP (1), VOID/NORMAL (2), SEE SHEET 2 (VOID 2&4 PIN) (3)
 Plating: 0: Matte Tin, 1: Gold Flash, 3: Gold 30u"
 Packaging: 1: Tape & Reel, 2: Tape & Reel+ Cap(sheet 2)
 LF: See note A
 pin counts from 02~15

Part No.	Dimensions					
	POS	A	B	C	D	E
10114828-xxx02LF	2	4.25	1.25±0.10	4.94	3.05	7.25
10114828-xxx03LF	3	5.50	2.50±0.10	6.19	4.30	8.50
10114828-xxx04LF	4	6.75	3.75±0.10	7.44	5.55	9.75
10114828-xxx05LF	5	8.00	5.00±0.10	8.69	6.80	11.00
10114828-xxx06LF	6	9.25	6.25±0.15	9.94	8.05	12.25
10114828-xxx07LF	7	10.50	7.50±0.15	11.19	9.30	13.50
10114828-xxx08LF	8	11.75	8.75±0.15	12.44	10.55	14.75
10114828-xxx09LF	9	13.00	10.00±0.15	13.69	11.80	16.00
10114828-xxx10LF	10	14.25	11.25±0.20	14.94	13.05	17.25
10114828-xxx11LF	11	15.50	12.50±0.20	16.19	14.30	18.50
10114828-xxx12LF	12	16.75	13.75±0.20	17.44	15.55	19.75
10114828-xxx13LF	13	18.00	15.00±0.20	18.69	16.80	21.00
10114828-xxx14LF	14	19.25	16.25±0.20	19.94	18.05	22.25
10114828-xxx15LF	15	20.50	17.50±0.20	21.19	19.30	23.50

Note A: The LF means RoHS compliance, the housing will withstand exposure to peak temperature 260 degree C for 5 sec in the IR re-flow process.

ITEM	MATERIAL	DESCRIPTION
1	THERMOPLASTIC HIGH TEMPERATURE	HOUSING
2	COPPER ALLOY	TERMINAL
3	COPPER ALLOY	HOLD DOWN

rev	ecn no	dr	date
A	T10-0145	J H	12/1/10
H	ELX-N-17075	TIM	2014/04/28
J	ELX-N-17516	TIM	2014/04/21

www.fciconnect.com

surface ISO 1302 6.4 tolerance std ISO 406 ISO 1101 projection

ANGULAR LINEAR 0.X ±0.25 0.XX ±0.15 0.XXX - ECN

Product family WTB Spec ref

FCI title WTB 1.25MM WAFER 180° SMT

catalog no CUSTOMER sheet 1 of 2

dwg no 10114828 Rev. J

REV F - 2006-04-17

1

2

3

4

A

B

C

D

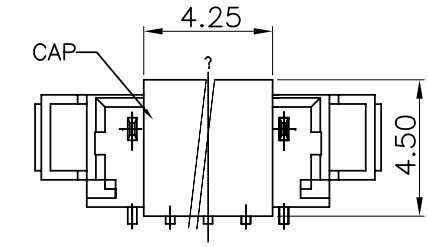
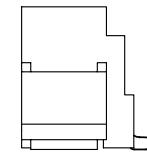
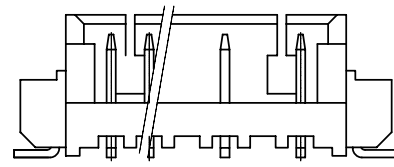
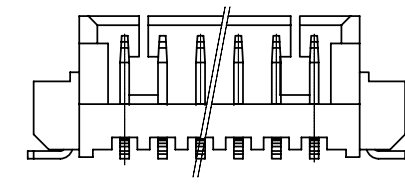
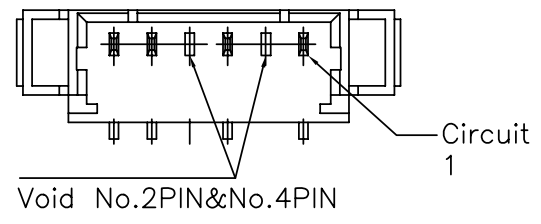
A

B

A

C

D



ASSEMBLY CAP

10114828-XXXXX1LF



Copyright FCI.

www.fciconnect.com			surface 6.4 ISO 1302	tolerance std ISO 406 ISO 1101	projection ISO 1101	MM
TOLERANCES UNLESS OTHERWISE SPECIFIED			ANGULAR	LINEAR	size A4	Scale 1.000
Dr	JASON HSU	12/1/10	0°	±2°	0.X ±0.25	ECN
Eng	JASON HSU	12/1/10	0.XX ±0.15	0.XXX -	ECN	Spec ref
Chr	GARY HSIEH	12/1/10	Product family		WTB	
Appr	JOSEPH HSIA	12/1/10	title		WTB 1.25MM WAFER 180° SMT	Rev. J
rev			ecn no		dwg no	10114828
dr			date		CUSTOMER	sheet 2 of 2
J						

1

2

3

4