



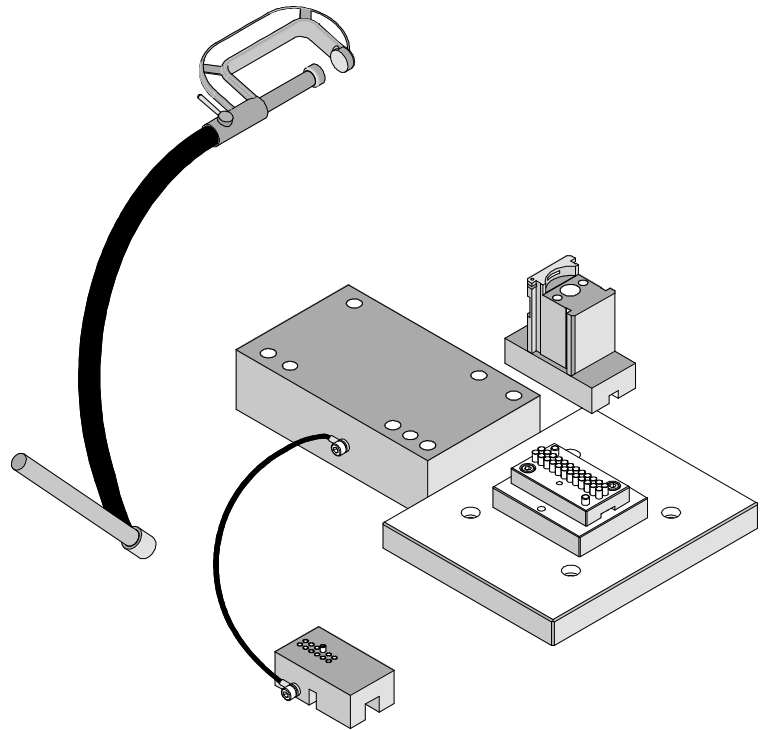
**Compliant Pin Insertion Tooling Kit
4 to 24 Circuits
Instruction Sheet
Order No. 62200-5800**

DESCRIPTION

The 62201-5800 tool kit is designed to insert Mini-Fit™ Compliant Pin Insertion Tooling (43879 Series) into a printed circuit board. This tool kit is intended for use in the Basic Arbor Press Order No. 11-31-6356 (AM60026-50).

SCOPE

Products: 4.20mm (.165") Pitch Mini-Fit BMI™, Mini-Fit CPI™, Mini-Fit Jr.™, Mini-Fit SMC™ Vertical Header, Compliant Pin Interface, 4 to 24 Circuits.



Vertical Header Assembly							
43879-0022	43879-0039	43879-0056	438794001	43879-5014	438795031	43879-6004	43879-6021
43879-0023	43879-0040	43879-0057	438794002	43879-5015	438795032	43879-6005	43879-6022
43879-0024	43879-0041	43879-0058	438794003	43879-5016	438795033	43879-6006	43879-6023
43879-0025	43879-0042	43879-0059	43879-5000	43879-5017	438795034	43879-6007	43879-6024
43879-0026	43879-0043	43879-0060	43879-5001	43879-5018	438795035	43879-6008	43879-6025
43879-0027	43879-0044	43879-0061	43879-5002	43879-5019	438795036	43879-6009	43879-6026
43879-0028	43879-0045	43879-0062	43879-5003	43879-5020	438795037	43879-6010	43879-6027
43879-0029	43879-0046	43879-0063	43879-5004	43879-5021	438795038	43879-6011	43879-7001
43879-0030	43879-0047	43879-0064	43879-5005	438795022	438795039	43879-6012	43879-9001
43879-0031	43879-0048	43879-0065	43879-5006	438795023	438795040	43879-6013	43879-9901
43879-0032	43879-0049	43879-0066	43879-5007	438795024	438795041	43879-6014	43879-9902
43879-0033	43879-0050	43879-0067	43879-5008	438795025	438795042	43879-6015	43879-9903
43879-0034	43879-0051	43879-0069	43879-5009	438795026	438795043	43879-6016	43879-9904
43879-0035	43879-0052	43879-0071	43879-5010	438795027	43879-6000	43879-6017	43879-9905
43879-0036	43879-0053	43879-0073	43879-5011	438795028	43879-6001	43879-6018	43879-9906
43879-0037	43879-0054	43879-0076	43879-5012	438795029	43879-6002	43879-6019	
43879-0038	43879-0055	438794000	43879-5013	438795030	43879-6003	43879-6020	

Note: Follow the operating instructions in the ATS-622006900 instruction manual.

PARTS LIST

Compliant Pin Insertion Tooling Kit 62200-5800				
Item	Order No	Engineering No.	Description	Quantity
Main Components				
1	11-31-7151	AM60037-5	Latch	1
2	11-31-7152	AM60037-6	Spring	1
3	62200-5801	62200-5801	Main Mounting Plate	1
4	62200-5802	62200-5802	Lower Pin Holder	1
5	62200-5804	62200-5804	Lower Mounting Plate	1
6	62200-5805	62200-5805	Tooling Holder	1
7	62200-5806	62200-5806	Press Spacer Plate	1
8	62200-5807	62200-5807	Upper Alignment Plate	1
9	62200-5809	62200-5809	Adjustment Block	1
10	62200-5814	62200-5814	Light Cap	1
11	63600-0585	63600-0585	Spring-Compression LC-032E-0MW	2
12	63600-0586	63600-0586	Flexible Arm	1
13	63600-0587	63600-0587	Laser Light	1
14	63600-0588	63600-0588	Safety Strap	1
Spare Parts				
15	62200-5803	62200-5803	Alignment Pin	24
Hardware				
16	N/A	N/A	M3 by 6 Long SHCS	1**
17	N/A	N/A	M3 by 6 Long SSS	1**
18	N/A	N/A	M4 by 10 Long SHCS	2**
19	N/A	N/A	M4 by 16 Long SHCS	2**
20	N/A	N/A	4mm by 12 Long Dowel Pin	4**
21	N/A	N/A	4mm by 20 Long Dowel Pin	2**
22	N/A	N/A	6mm by 12 Long Shoulder Screw	2**
23	N/A	N/A	1/16 by 1/4 " Long Ro11 Pin	1**
** Available from an industrial supply company such as MSC (1-800-645-7270).				

Assembly

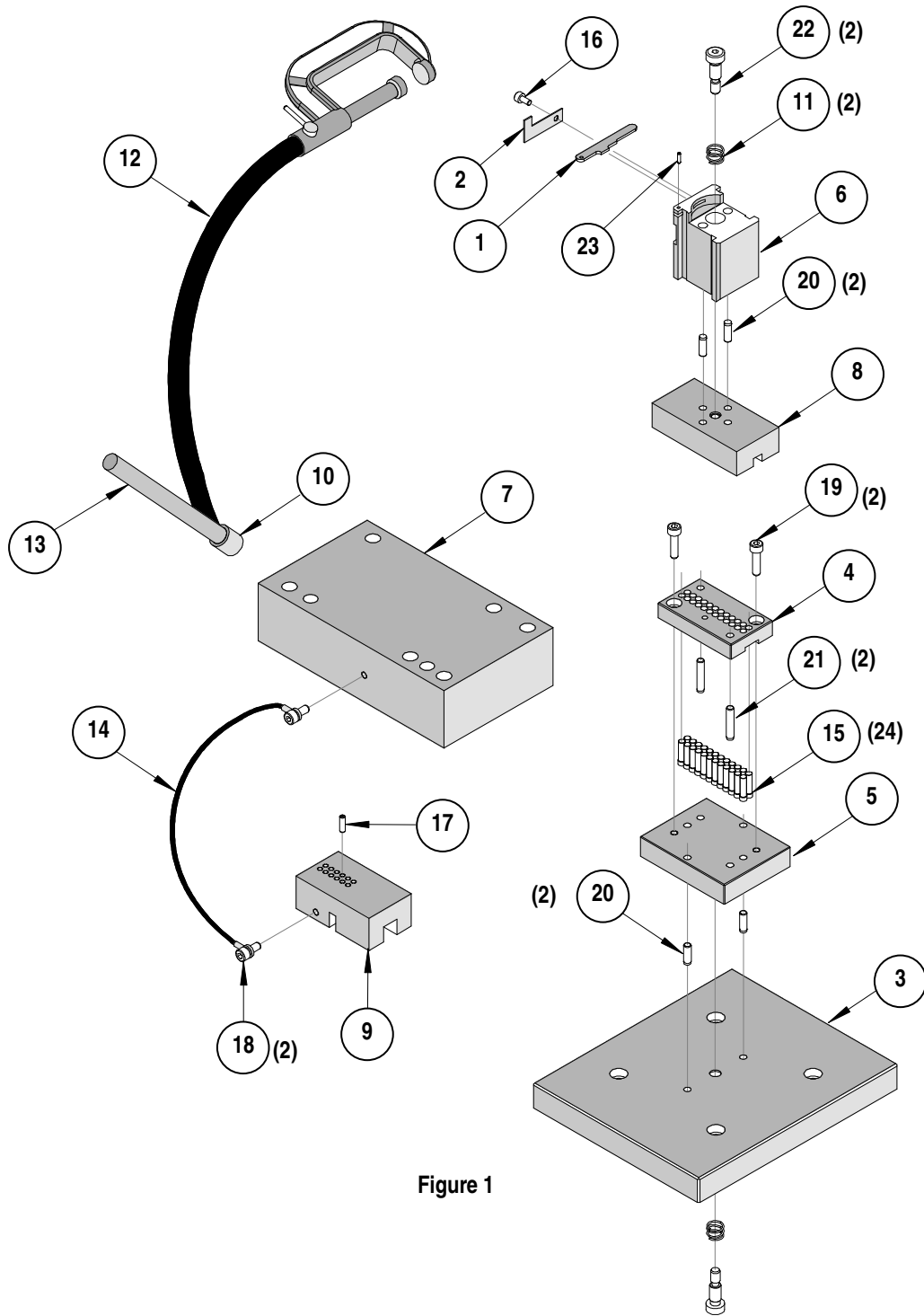


Figure 1

Americas Headquarters
 Lisle, Illinois 60532 U.S.A.
 1-800-78MOLEX
 amerinfo@molex.com

Far East North Headquarters
 Yamato, Kanagawa, Japan
 81-462-65-2324
 feninfo@molex.com

Far East South Headquarters
 Jurong, Singapore
 65-6-268-6868
 fesinfo@molex.com

European Headquarters
 Munich, Germany
 49-89-413092-0
 eurinfo@molex.com

Corporate Headquarters
 2222 Wellington Ct.
 Lisle, IL 60532 U.S.A.
 630-969-4550
 Fax: 630-969-1352

Visit our Web site at <http://www.molex.com>