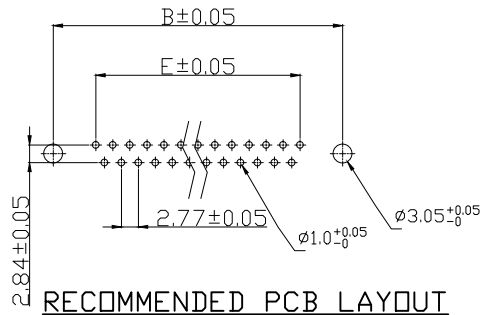
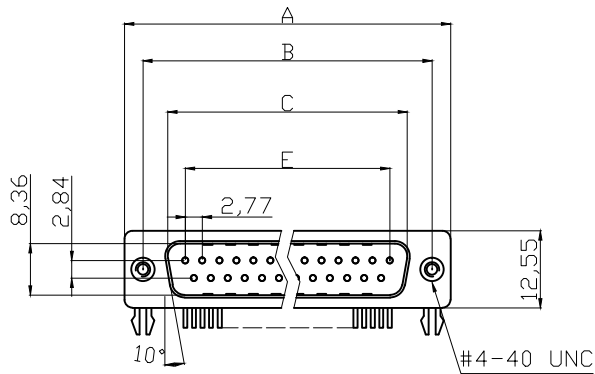


**Male**



**Product Specification**

**Material**

Insulator : Glass-Filled Thermoplastic PBT,UL94V-0, Black

① Contact : Brass,Gold flash selective over Nickel

① Shell: Steel, 100u" Tin over 50u" min. copper

Clinch Nut : Brass, Nickel Plated

① Boardlock : Steel, Tin Plated

**Electrical**

Contact Resistance : 20 milliohms

Max at 1 AMP DC.

Insulation Resistance : 1000

magohms at 500 VDC

Dielectric Withstanding Voltage :

1000 VAC/rms 60Hz for 1 minute

Current Rating : 3 AMP

Volatge Rating : 250 VAC/rms 60Hz

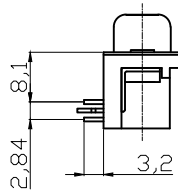
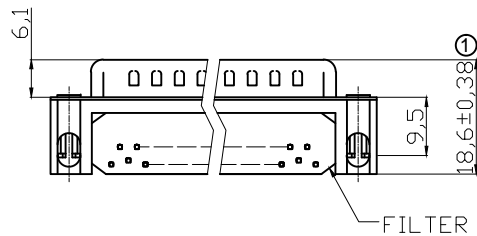
Operating Temperature: -20°C~+85°C

Order Code:

A-Dx xx A/KG-F  
 Contact Type  
 F - Female  
 S - Male  
 F - Ferrite Plate  
 Standard: Quality class III  
 No. of Contact  
 09 / 15 / 25 / 37

**Dimensions**

| Positions | A     | B     | C     | E     |
|-----------|-------|-------|-------|-------|
| 9         | 30.81 | 24.99 | 16.92 | 11.08 |
| 15        | 39.20 | 33.30 | 25.25 | 19.39 |
| 25        | 53.05 | 47.04 | 38.96 | 33.24 |
| 37        | 69.40 | 63.50 | 55.42 | 49.86 |



7.2mm Footprint

**RoHS compliant**

Unit:mm

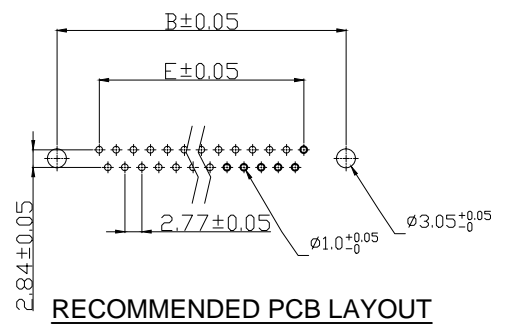
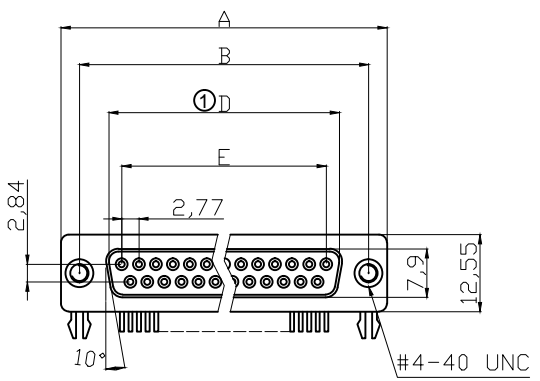


File No.: E198287

| Scale            | Free  |     |  |            |        | Date     | Name       | Customer-No.          |             |             |       |
|------------------|-------|-----|--|------------|--------|----------|------------|-----------------------|-------------|-------------|-------|
| <b>TOLERANCE</b> |       |     |  |            |        | Drawn    | 15.08.2012 | Lucas                 |             |             |       |
| X.               | ±0.38 |     |  |            |        | Approved | 23.05.2018 | Winnie                |             |             |       |
| X.X              | ±0.25 |     |  |            |        |          |            | ASSMANN WSW-No.       |             |             |       |
| X.XX             | ±0.13 | ②   | Add the UL No.                         | 23.05.2018 | Winnie |          |            | <b>A-Dx xx A/KG-F</b> |             |             |       |
| DIM              | TOL   | ①   | Update to correct dimension & material | 18.06.2015 | Amy    |          |            |                       |             |             |       |
| X.°              | ±3°   | ①   |  |            |        |          |            |                       | Drawing-No. | ASS 4899 CO | rev02 |
| X.X°             | ±1.0° | ①   | Drawn                                  | 15.08.2012 | Lucas  |          |            |                       | Replace     | Sheet       | 1/2   |
| Angle            | TOL   | Id. | Modification                           | Date       | Name   |          |            |                       |             |             |       |

|                 |                       |
|-----------------|-----------------------|
| Customer-No.    |                       |
| ASSMANN WSW-No. | <b>A-Dx xx A/KG-F</b> |
| Drawing-No.     | ASS 4899 CO           |
| Replace         | Sheet 1/2             |

**Female**



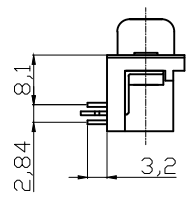
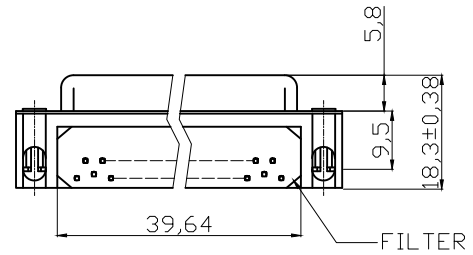
**Product Specification**

**Material**

Insulator : Glass-Filled Thermoplastic PBT, UL94V-0,Black  
 Contact : Copper alloy, Gold flash selective over Nickel  
 Shell : Steel,100u" Tin Over 50u" min Copper  
 Clinch Nut : Copper alloy, Nickel Plated.  
 Boardlock : Brass, Tin Plated.

**Electrical**

Contact Resistance : 20 milliohms Max at 1 AMP DC.  
 Insulation Resistance : 1000magohms at 500 VDC  
 Dielectric Withstanding Voltage :1000 VAC/rms 60Hz for 1 minute  
 Current Rating : 3AMP  
 Volatge Rating : 250 VAC/rms 60Hz  
 OPERATING TEMPERATURE:-20°C+85°C



**Dimensions**

| Positions | A     | B     | ⊙D    | E     |
|-----------|-------|-------|-------|-------|
| 9         | 30.81 | 24.99 | 16.33 | 11.08 |
| 15        | 39.20 | 33.32 | 24.70 | 19.39 |
| 25        | 53.05 | 47.04 | 38.40 | 33.24 |
| 37        | 69.40 | 63.50 | 54.80 | 49.86 |

**7.2mm Footprint**

**RoHS compliant**

Unit:mm



File No.: E198287

| Scale            | Free  |     |  |            | Date     | Name       | Customer-No. |
|------------------|-------|-----|--|------------|----------|------------|--------------|
| <b>TOLERANCE</b> |       |     |  |            | Drawn    | 15.08.2012 | Lucas        |
| X.               | ±0.38 |     |  |            | Approved | 23.05.2018 | Winnie       |
| X.X              | ±0.25 |     |  |            |          |            |              |
| X.XX             | ±0.13 | ②   | Add the UL No.                         | 23.05.2018 | Winnie   |            |              |
| DIM              | TOL   | ①   | Update to correct dimension & material | 18.06.2015 | Amy      |            |              |
| X.°              | ±3°   |     |  |            |          |            |              |
| X.X°             | ±1.0° | ③   | Drawn                                  | 15.08.2012 | Lucas    |            |              |
| Angle            | TOL   | Id. | Modification                           | Date       | Name     |            |              |

ASSMANN WSW-No.  
**A-Dx xx A/KG-F**

Drawing-No.  
**ASS 4899 CO** rev02



Replace Sheet 2/2