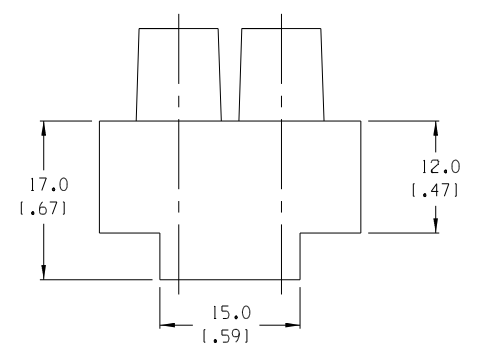
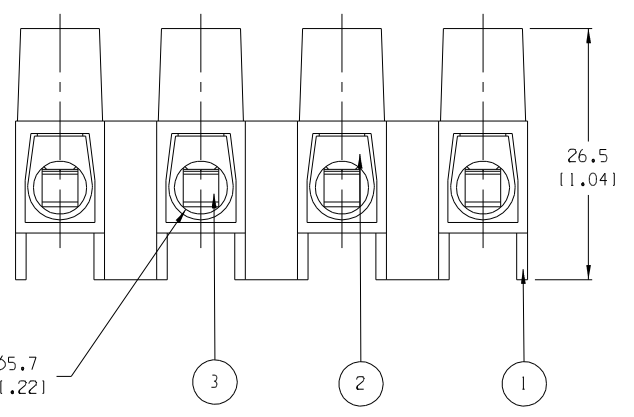
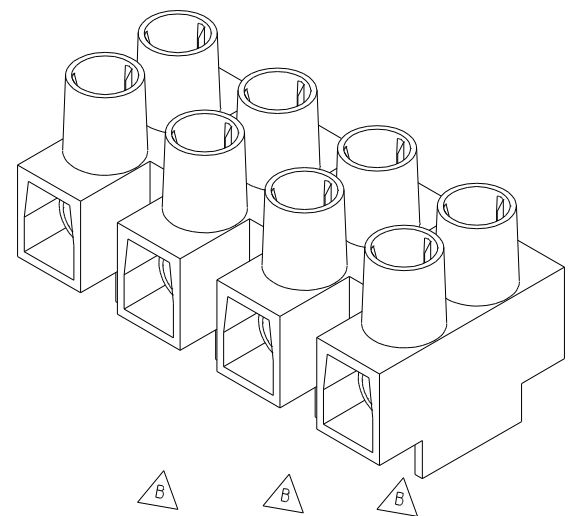


- NOTES:
1. MATERIAL: SEE TABLE
 2. FINISHES: SEE TABLE
 3. PRODUCT SPECIFICATION: NOT REQUIRED
 4. PACKAGING: NOT REQUIRED
 5. MATES WITH: NONE
 6. "XX" REFERS TO THE NUMBER OF CIRCUITS



NUMBER OF CIRCUITS	"A" DIM.	"B" DIM.	"C" DIM.	MATERIAL NUMBER
01	10.0 (1.39)	N/A	N/A	391001501
02	25.0 (1.98)	15.0 (1.591)	N/A	391001502
03	40.0 (1.57)	30.0 (1.181)	15.0 (1.591)	391001503
04	55.0 (2.17)	45.0 (1.772)	30.0 (1.181)	391001504
05	70.0 (2.76)	60.0 (2.362)	45.0 (1.772)	391001505
06	85.0 (3.35)	75.0 (2.953)	60.0 (2.362)	391001506
07	100.0 (3.94)	90.0 (3.543)	75.0 (2.953)	391001507
08	115.0 (4.53)	105.0 (4.134)	90.0 (3.543)	391001508
09	130.0 (5.12)	120.0 (4.724)	105.0 (4.134)	391001509
10	145.0 (5.71)	135.0 (5.315)	120.0 (4.724)	391001510
11	160.0 (6.30)	150.0 (5.906)	135.0 (5.315)	391001511
12	175.0 (6.89)	165.0 (6.496)	150.0 (5.906)	391001512

ITEM	QTY.	DESCRIPTION	MATERIAL	FINISH
4	XX*2	CLAMPING SCREWS, M5	STEEL	ZINC
3	XX	WIRE PROTECTOR	BRASS	NICKEL
2	XX	TERMINAL	BRASS	NICKEL
1	1	INSULATOR	NYLON 6	CLEAR

EC NO. ECN 4098 DRWG: RK 4-20-05 CH: K APPR:	QUALITY SYMBOLS MAJOR : CRITICAL C : SPC : S :	GENERAL TOLERANCES: (UNLESS SPECIFIED) <table border="1"> <tr> <th></th> <th>mm</th> <th>INCH</th> </tr> <tr> <td>4 PLACES</td> <td>±.0015</td> <td></td> </tr> <tr> <td>3 PLACES</td> <td>±.038</td> <td>±.005</td> </tr> <tr> <td>2 PLACES</td> <td>±.13</td> <td>±.01</td> </tr> <tr> <td>1 PLACE</td> <td>±.3</td> <td></td> </tr> </table>		mm	INCH	4 PLACES	±.0015		3 PLACES	±.038	±.005	2 PLACES	±.13	±.01	1 PLACE	±.3		SCALE 2:1 DESIGN UNITS <input type="checkbox"/> mm <input checked="" type="checkbox"/> INCH THIRD ANGLE PROJECTION	DRAWN BY & DATE J. FARMER 09-17-04 CHECKED BY & DATE R. KEMP 09-17-04 APPROVED BY & DATE GHR 09-17-04	PROJECT NO. - - - DIMENSIONS: <input checked="" type="checkbox"/> mm <input type="checkbox"/> INCH <input type="checkbox"/> mm SHT REV REVISE ON CAD ONLY
		mm	INCH																	
	4 PLACES	±.0015																		
	3 PLACES	±.038	±.005																	
2 PLACES	±.13	±.01																		
1 PLACE	±.3																			
DRAFT WHERE APPLICABLE MUST REMAIN WITHIN DIMENSIONS			CAD FILENAME 39100-15XX	MATERIAL NO. SEE CHART	DRAWING NO. SD-39100-007															
THIS DRAWING CONTAINS INFORMATION THAT IS PROPRIETARY TO MOLEX INCORPORATED AND SHOULD NOT BE USED WITHOUT WRITTEN PERMISSION.			TITLE: 15 MM HIGH PROFILE WITH WIRE PROTECTORS																	
MOLEX INCORPORATED			SHEET NO. 1 OF 1	SIZE B																