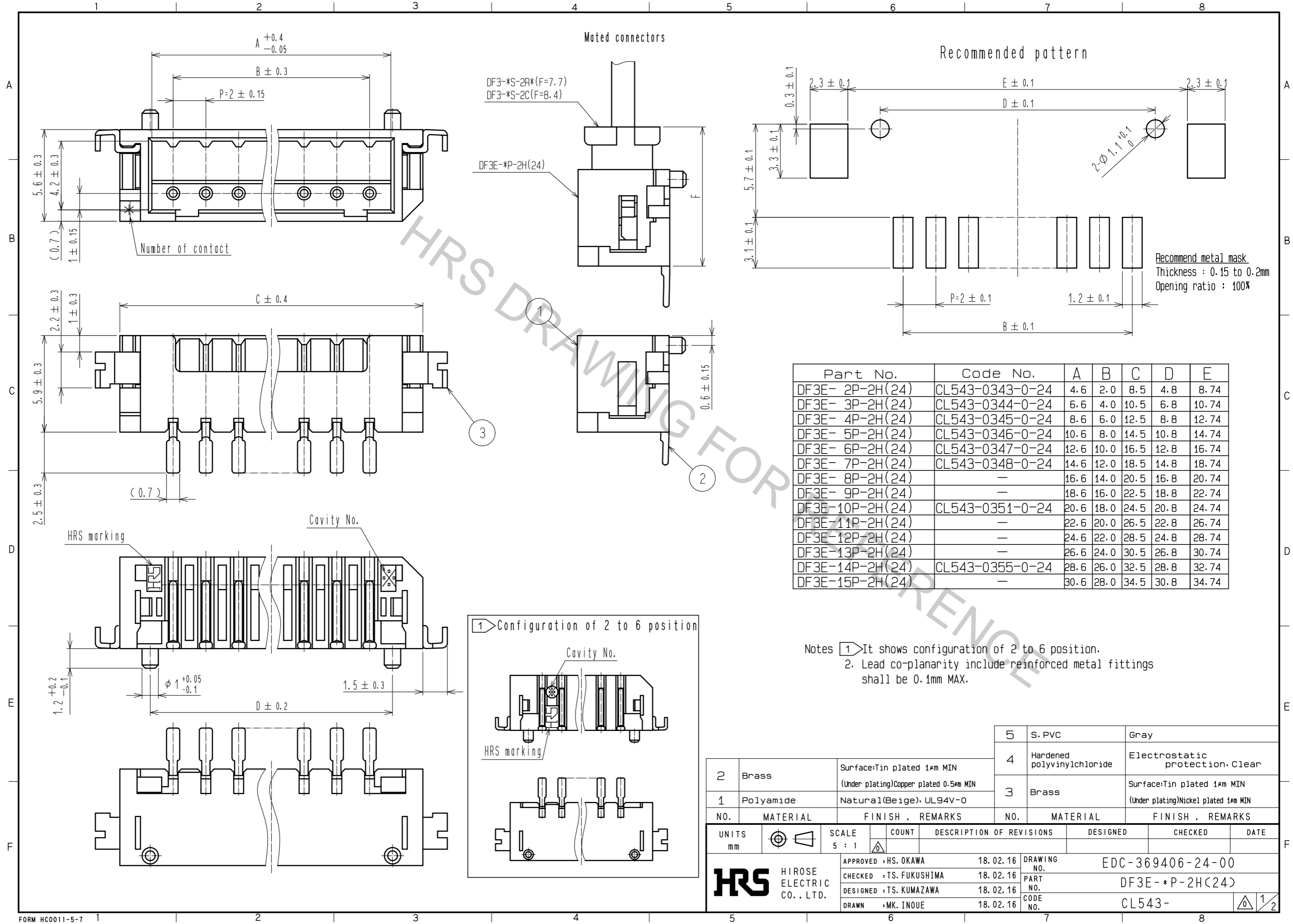
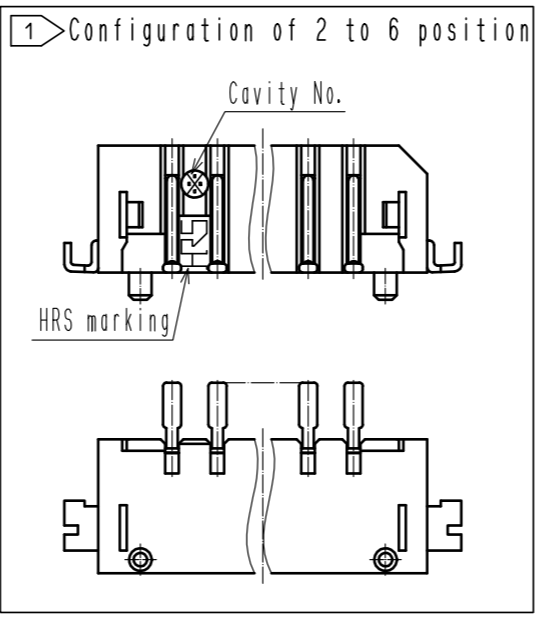


Aug.1.2018 Copyright 2018 HIROSE ELECTRIC CO., LTD. All Rights Reserved.
 In case that the application demands a high level of reliability, such as automotive,
 please contact a company representative for further information.



Part No.	Code No.	A	B	C	D	E
DF3E- 2P-2H(24)	CL543-0343-0-24	4.6	2.0	8.5	4.8	8.74
DF3E- 3P-2H(24)	CL543-0344-0-24	6.6	4.0	10.5	6.8	10.74
DF3E- 4P-2H(24)	CL543-0345-0-24	8.6	6.0	12.5	8.8	12.74
DF3E- 5P-2H(24)	CL543-0346-0-24	10.6	8.0	14.5	10.8	14.74
DF3E- 6P-2H(24)	CL543-0347-0-24	12.6	10.0	16.5	12.8	16.74
DF3E- 7P-2H(24)	CL543-0348-0-24	14.6	12.0	18.5	14.8	18.74
DF3E- 8P-2H(24)	-	16.6	14.0	20.5	16.8	20.74
DF3E- 9P-2H(24)	-	18.6	16.0	22.5	18.8	22.74
DF3E-10P-2H(24)	CL543-0351-0-24	20.6	18.0	24.5	20.8	24.74
DF3E-11P-2H(24)	-	22.6	20.0	26.5	22.8	26.74
DF3E-12P-2H(24)	-	24.6	22.0	28.5	24.8	28.74
DF3E-13P-2H(24)	-	26.6	24.0	30.5	26.8	30.74
DF3E-14P-2H(24)	CL543-0355-0-24	28.6	26.0	32.5	28.8	32.74
DF3E-15P-2H(24)	-	30.6	28.0	34.5	30.8	34.74

Notes 1 It shows configuration of 2 to 6 position.
 2. Lead co-planarity include reinforced metal fittings shall be 0.1mm MAX.

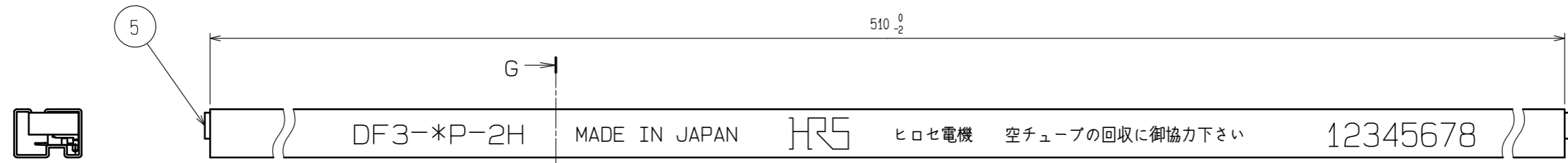


NO.	MATERIAL	FINISH . REMARKS	NO.	MATERIAL	FINISH . REMARKS
2	Brass	Surface: Tin plated 1μm MIN (Under plating) Copper plated 0.5μm MIN	5	S. PVC	Gray
1	Polyamide	Natural(Beige), UL94V-0	4	Hardened polyvinylchloride	Electrostatic protection, Clear
			3	Brass	Surface: Tin plated 1μm MIN (Under plating) Nickel plated 1μm MIN

UNITS	SCALE	COUNT	DESCRIPTION OF REVISIONS	DESIGNED	CHECKED	DATE
mm	5 : 1	△	APPROVED : HS. OKAWA 18.02.16			
			CHECKED : TS. FUKUSHIMA 18.02.16			
			DESIGNED : TS. KUMAZAWA 18.02.16			
			DRAWN : MK. INOUE 18.02.16			

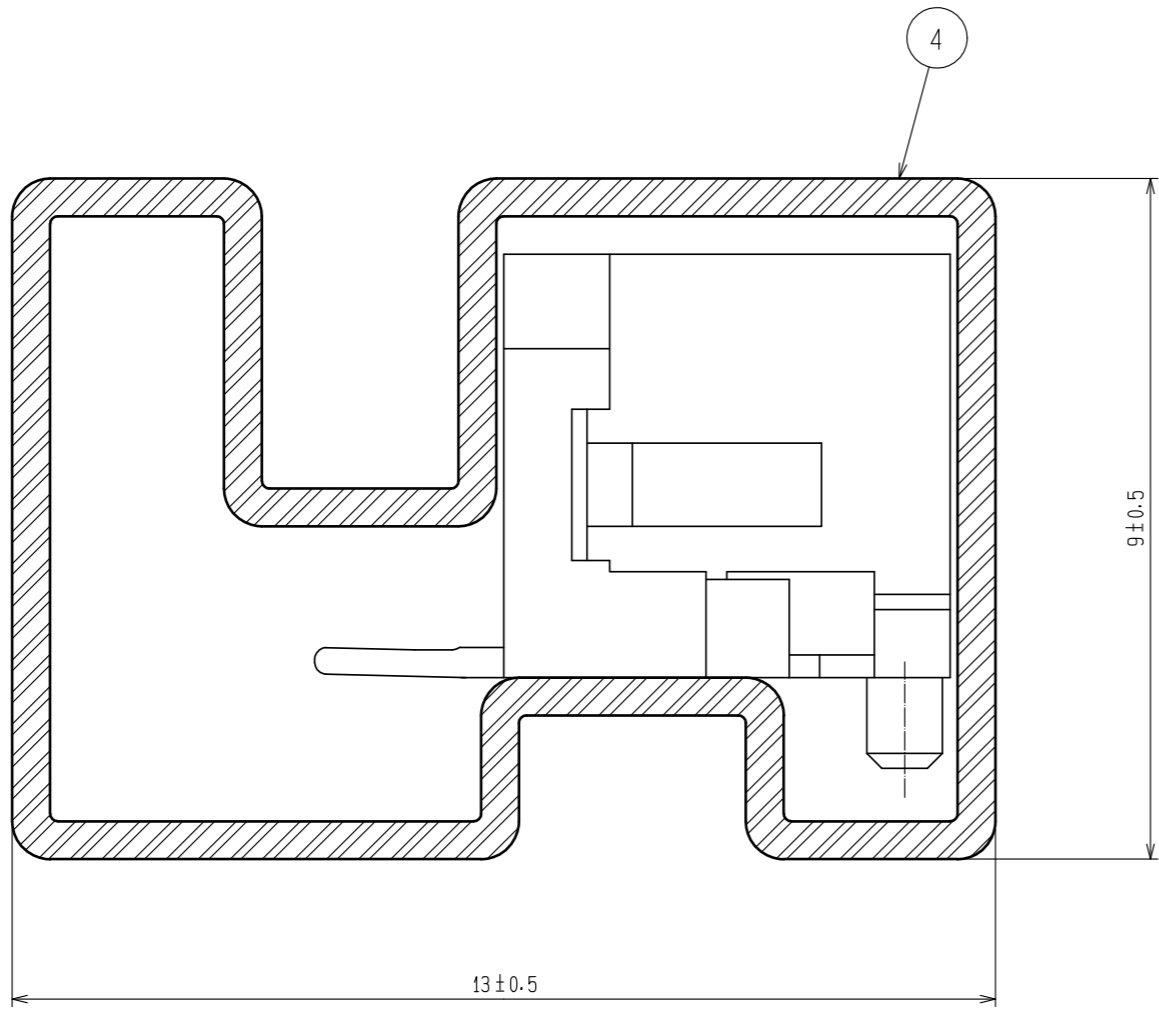
DRAWING NO.	PART NO.	CODE NO.
EDC-369406-24-00	DF3E-*P-2H(24)	CL543-

Aug.1.2018 Copyright 2018 HIROSE ELECTRIC CO., LTD. All Rights Reserved.
 In case that the application demands a high level of reliability, such as automotive,
 please contact a company representative for further information.



Notes 3. Number of connectors per a magazine case shall be in accordance with the list.
 4. These connectors shall be on sale in accordance with the multiple quantity on the list.

G-G (10:1)



Part No.	Code No.	Number of connectors
DF3E- 2P-2H(24)	CL543-0343-0-24	41
DF3E- 3P-2H(24)	CL543-0344-0-24	34
DF3E- 4P-2H(24)	CL543-0345-0-24	30
DF3E- 5P-2H(24)	CL543-0346-0-24	26
DF3E- 6P-2H(24)	CL543-0347-0-24	23
DF3E- 7P-2H(24)	CL543-0348-0-24	21
DF3E- 8P-2H(24)	-	19
DF3E- 9P-2H(24)	-	18
DF3E-10P-2H(24)	CL543-0351-0-24	17
DF3E-11P-2H(24)	-	15
DF3E-12P-2H(24)	-	14
DF3E-13P-2H(24)	-	14
DF3E-14P-2H(24)	CL543-0355-0-24	13
DF3E-15P-2H(24)	-	12

HRS	DRAWING NO.	EDC-369406-24-00	
	PART NO.	DF3E-*P-2H(24)	
	CODE NO.	CL543-	2/2