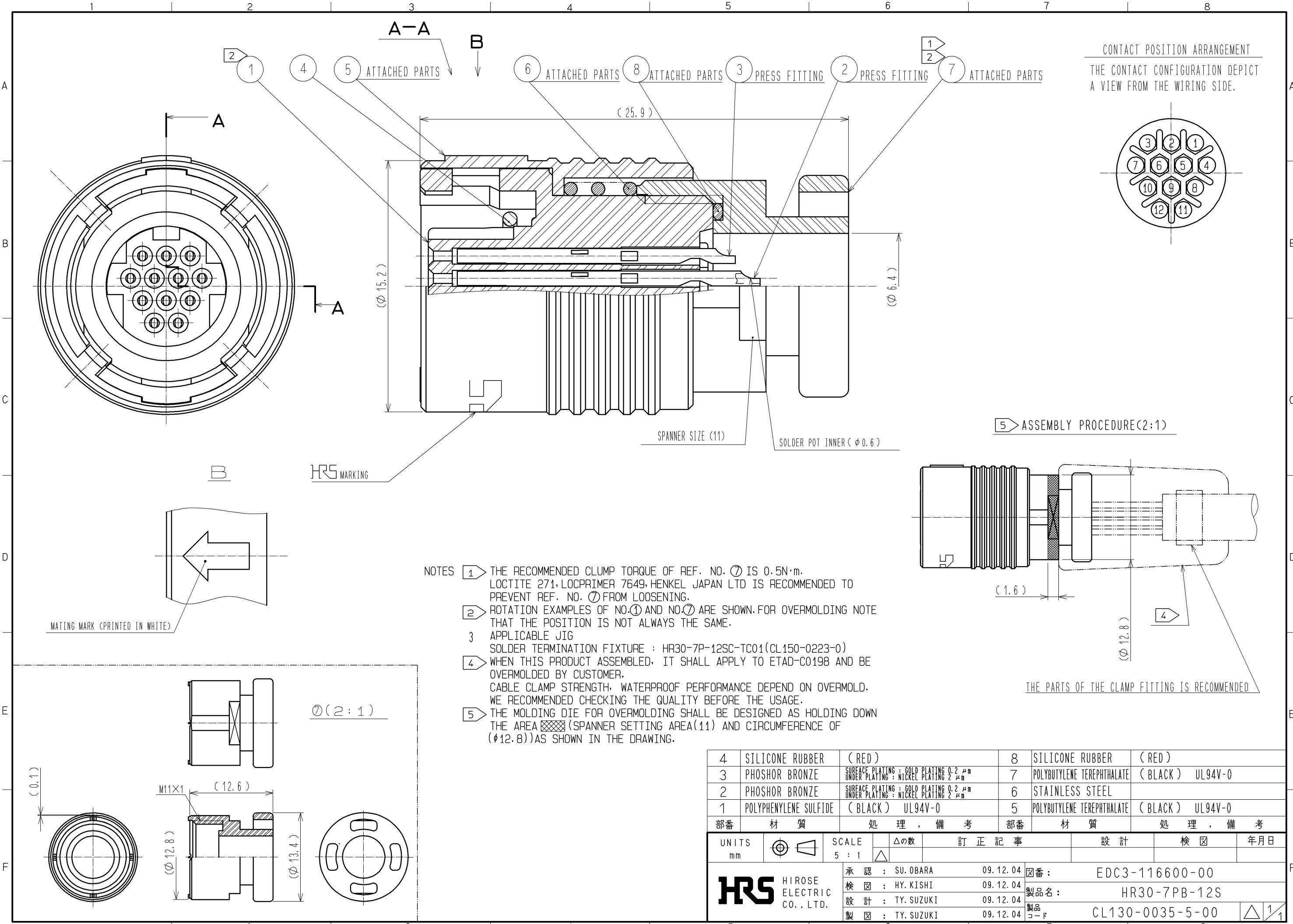


APPLICABLE STANDARD					
RATING	OPERATING TEMPERATURE RANGE	-25 °C TO +85 °C	STORAGE TEMPERATURE RANGE	-10 °C TO +60 °C	
	VOLTAGE	AC 30 V , DC 42 V			
	CURRENT	2 A	APPLICABLE CABLE		
<b>SPECIFICATIONS</b>					
ITEM		TEST METHOD		REQUIREMENTS	
<b>CONSTRUCTION</b>					
GENERAL EXAMINATION		VISUALLY AND BY MEASURING INSTRUMENT.		ACCORDING TO DRAWING.	
MARKING		CONFIRMED VISUALLY.			
<b>ELECTRIC CHARACTERISTICS</b>					
CONTACT RESISTANCE		CONTACT SHALL BE MEASURED AT DC 1 A		15 mΩ MAX.	
INSULATION RESISTANCE		100 V DC.		1000 MΩ MIN.	
VOLTAGE PROOF		300 V AC. FOR 1 min.		NO FLASHOVER OR BREAKDOWN.	
<b>MECHANICAL CHARACTERISTICS</b>					
CONTACT INSERTION AND WITHDRAWAL FORCES		φ0.53±0.003 BY STEEL GAUGE.		INSERTION AND WITHDRAWAL FORCES : 0.4 N MIN.	
CONNECTOR INSERTION AND WITHDRAWAL FORCES		MEASURED BY APPLICABLE CONNECTOR.		INSERTION AND WITHDRAWAL FORCES LOCKING DEVICE WITH UNLOCK : — N MAX. LOCKING DEVICE WITH LOCK : 50 N MAX.	
MECHANICAL OPERATION		1000 TIMES INSERTIONS AND EXTRACTIONS.		CONTACT RESISTANCE: 30 mΩ MAX.	
VIBRATION		FREQUENCY: 10 → 55 → 10 (Hz) (1CYC, 5min), SINGLE AMPLITUDE 0.75 mm, AT 10 CYC, FOR 3 DIRECTIONS.		① NO ELECTRICAL DISCONTINUITY OF 10 μs. ② NO DAMAGE, CRACK AND LOOSENESS, OF PARTS.	
SHOCK		490 m/s <sup>2</sup> DIRECTIONS OF PULSE 11 ms AT 3 TIMES FOR 3 DIRECTIONS.		① NO ELECTRICAL DISCONTINUITY OF 10 μs. ② NO DAMAGE, CRACK AND LOOSENESS, OF PARTS.	
<b>ENVIRONMENTAL CHARACTERISTICS</b>					
DAMP HEAT (STEADY STATE)		EXPOSED AT 40 °C, 90 TO 95 %, 96 h.		① INSULATION RESISTANCE: 10 MΩ MIN (AT HIGH HUMIDITY). ② INSULATION RESISTANCE: 100 MΩ MIN (AT DRY). ③ NO DAMAGE, CRACK AND LOOSENESS OF PARTS.	
RAPID CHANGE OF TEMPERATURE		TEMPERATURE -55→ R/T <sup>(1)</sup> → +85 → R/T °C TIME 30 → 10 TO 15 → 30 → 10 TO 15 min UNDER 5 CYCLES.		① INSULATION RESISTANCE: 100 MΩ MIN. ② NO DAMAGE, CRACK AND LOOSENESS OF PARTS.	
CORROSION SALT MIST		EXPOSED IN 5 % SALT WATER SPRAY FOR 48 h.		NO HEAVY CORROSION RUIN THE FUNCTION.	
DRY HEAT		EXPOSED AT + 85 °C , 96 h.		NO DAMAGE, CRACK AND LOOSENESS OF PARTS.	
COLD		EXPOSED AT - 55 °C , 96 h.		NO DAMAGE, CRACK AND LOOSENESS OF PARTS.	
RESISTANCE TO SOLDERING HEAT		SOLDER TEMPERATURE +350±10°C, FOR IMMERSION DURATION, 3 TO 4 s.		NO DEFORMATION OF CASE OF EXCESSIVE LOOSENESS OF THE TERMINALS	
SOLDERABILITY		SOLDERED AT SOLDER TEMPERATURE, +350±10°C FOR IMMERSION DURATION, 2 TO 3 s		SOLDER SURFACE TO BE FREE FROM PIN-HOLE, NO WETTING AND OTHER DEFECTS.	
SEALING		EXPOSED AT A DEPTH OF 1 m FOR 0.5 h.		NO WATER PENETRATION INSIDE CONNECTOR.	
AIRTIGHTNESS		APPLY AIR PRESSURE 17.6kPa FOR 0.5min TO INSIDE CONNECTOR.		NO AIR BUBBLES INSIDE CONNECTOR.	
	COUNT	DESCRIPTION OF REVISIONS	DESIGNED	CHECKED	DATE
Q					
REMARK			APPROVED	SU. OBARA	09.12.04
NOTES(1)R/T : ROOM TEMPERATURE			CHECKED	HY. KISHI	09.12.04
(2) SEALING AND AIRTIGHTNESS SHALL BE TESTED BY APPLICABLE CONNECTOR.			DESIGNED	TY. SUZUKI	09.12.04
Unless otherwise specified, refer to JIS C 5402.			DRAWN	TY. SUZUKI	09.12.04
Note QT:Qualification Test AT:Assurance Test X:Applicable Test			DRAWING NO.		ELC4-116600-00
<b>HRS</b>	SPECIFICATION SHEET		PART NO.	HR30-7PB-12S	
	HIROSE ELECTRIC CO., LTD.		CODE NO.	CL130-0035-5-00	△ 1/1



4	SILICONE RUBBER	( RED )	8	SILICONE RUBBER	( RED )
3	PHOSHOR BRONZE	SURFACE PLATING : GOLD PLATING 0.2 μm UNDER PLATING : NICKEL PLATING 2 μm	7	POLYBUTYLENE TEREPHTHALATE	( BLACK ) UL94V-0
2	PHOSHOR BRONZE	SURFACE PLATING : GOLD PLATING 0.2 μm UNDER PLATING : NICKEL PLATING 2 μm	6	STAINLESS STEEL	
1	POLYPHENYLENE SULFIDE	( BLACK ) UL94V-0	5	POLYBUTYLENE TEREPHTHALATE	( BLACK ) UL94V-0
部番	材 質	处 理 , 備 考	部番	材 質	处 理 , 備 考
UNITS mm		SCALE 5 : 1	△の数	訂 正 記 事	設 計
<b>HRS</b> HIROSE ELECTRIC CO., LTD.	承 認 : SU. OBARA 検 査 : HY. KISHI 設 計 : TY. SUZUKI 製 図 : TY. SUZUKI	09.12.04 09.12.04 09.12.04 09.12.04	図番: 製品名: 製品 コード	EDC3-116600-00 HR30-7PB-12S CL130-0035-5-00	年 月 日