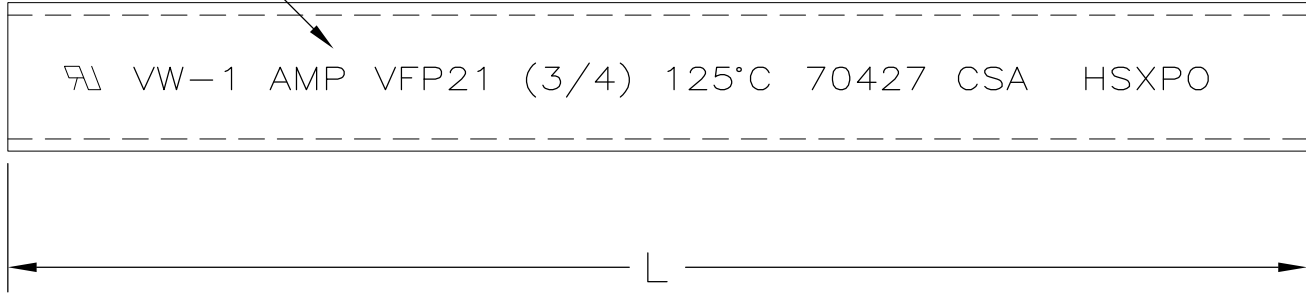
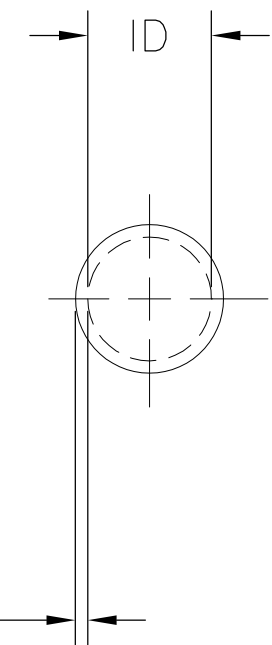




19.05 [.750] MINIMUM EXPANDED  
9.53 [.375] MAXIMUM RECOVERED



0.76 [.030] NOMINAL WALL  
THICKNESS FULLY RECOVERED



REVISIONS		
LTR	DESCRIPTION	DATE
R	REVISED PER DCR NO R060228	10/13/2006
R1	REVISED PER ECO-09-021510	12SEP09

**1** TUBING VFP21 MARKED AS SHOWN IN  
WHITE CHARACTERS ON SURFACE INDICATED

**2** TUBING VFP21 IS UL RECOGNIZED,  
IS RATED 125°C [257°F], 600 V  
AND MEETS VW-1 FLAME TEST.

**3** TUBING VFP21 IS CSA CERTIFIED  
AND MEETS VW-1 FLAME TEST.

**4** TUBING FP21 IS UNMARKED AND  
MEETS REQUIREMENTS OF  
AMS-DTL-23053/5-109-0

MARKING	NOTES	LENGTH L	PART NUMBER
<b>1</b>	<b>2</b> <b>3</b>	111.25 ± 3.05 [4.38 ± .12]	<b>2</b> -603329-3
		61 m [200 ft] MINIMUM	1-603329-3
<b>4</b>	<b>4</b>	50.8 ± 1.27 [2.00 ± .05]	<b>1</b> -603329-2
		1219.2 ± 12.7 [48.00 ± .50]	1-603329-1
		38.1 ± 1.14 [1.50 ± .05]	<b>6</b> 03329-6
<b>1</b>	<b>2</b> <b>3</b>	61 m [200 ft] MINIMUM	603329-2
		1219.2 ± 12.7 [48.00 ± .50]	603329-1

5. WEIGHT PER LINEAR FOOT/304.8 mm:  
8.89 g/.0196 lbs.

6. MATERIAL: BLACK POLYOLEFIN

**△** OBSOLETE PARTS: OBSOLETE CIS STREAMLINING PER  
D.RENAUD/D.SINISI

© 2006-2009 Tyco Electronics Corporation. All rights reserved.

### SPECIFICATION CONTROL DRAWING

UNLESS OTHERWISE SPECIFIED DIMENSIONS ARE IN mm. INCH DIMENSIONS ARE IN BRACKETS.	DRAWN UNGUYEN	DATE 10/13/2006	Tyco Electronics Corporation 300 Constitution Drive Menlo Park, CA. USA 94025 
	RPN		
DECIMALS .XX ± .01 [.0004 in] .X ± .1 [.004 in]	CAD NAME R060228	TITLE AMPSULATION VFP21 AND FP21 3/4 INCH ID, BLACK	
ANGLES .X ± 0.5 DEG	THIRD ANGLE PROJECTION	SIZE B	CODE IDENT. NO. 06090
		DWG. NO. C-603329	DO NOT SCALE THIS DRAWING
			SHEET 1 OF 1