

(2.00 mm) .0787"

S2SD, S2SDT SERIES

TIGER EYE™ CABLE ASSEMBLY

SPECIFICATIONS

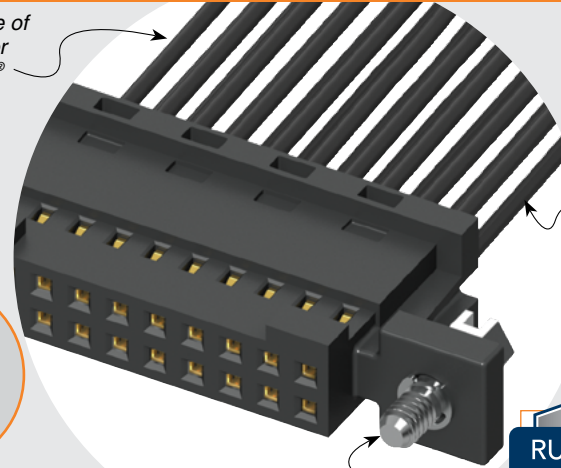
For complete specifications see www.samtec.com?S2SD or www.samtec.com?S2SDT

- Insulator Material:**
Black LCP
- Contact Material:**
BeCu
- Plating:**
Au over 50 μ" (1.27 μm) Ni
- Wire:**
24, 26, 28 or 30 AWG
- Operating Temp Range:**
-10 °C to +105 °C (PVC)
-40 °C to +125 °C (*Teflon®)
- Current Rating (S2SD-24/T2M):**
3.8 A per pin
(1 pin powered per row)
- Voltage Rating:**
250 VAC
- RoHS Compliant:**
Yes

*DuPont™ Teflon® is a registered trademark of the E.I. du Pont de Nemours and Company or its affiliates.

Mates with:
T2M

Choice of PVC or Teflon® cable



24, 26, 28 or 30 Wire gauge

RUGGEDIZED BY SAMTEC

- Tiger Eye™ contacts
- Retention latches

ALSO AVAILABLE (MOQ Required)

- Other sizes
- Contact Samtec.

APPLICATION

-24C CABLE COLOR CODING	
PIN	COLOR
1	BROWN
2	RED
3	ORANGE
4	YELLOW
5	GREEN
6	VIOLET
7	GRAY
8	WHITE
9	BLACK
10	BLUE
ETC	REPEAT

Notes:
For wiring option information refer to drawing on web.

Teflon® cable is intended for crimp only. Contact Samtec for solderable cable applications.

Some lengths, styles and options are non-standard, non-returnable.

TYPE	PINS PER ROW	WIRE GAUGE	PLATING OPTION	ASSEMBLED LENGTH	END OPTION	END 2 OPTION
S2SD = Double Row PVC Cable	-05, -07, -10, -15, -20, -25, -30 (Standard sizes)	-24 -24C = Color Coded Cable (S2SD only)	-L = 10 μ" (0.25 μm) Gold on contact	- "XX.XX" = Wire Length in Inches (69.85 mm) 02.75" min.	-S = Single End -D = Double End	(Only available with -D, -DR & -DS) -NUS = Notch up, straight (Pin 1 to Pin N-1) -NDS = Notch down, straight (Pin 1 to Pin 2) -NUX = Notch up, crossed (Pin 1 to Pin N) -NDX = Notch down, crossed (Pin 1 to Pin 1)

Specify "S" for single ended and "D" for double ended.

- (X)R = Retention Latch (-SR mates with T2M-WT)

- (X)S = Screw Down (10 positions minimum) (mates with T2M-DS)

Dimensions for -SR: (2.11) .083, (2.64) .104

Dimensions for -D-NUS: (5.15) .203, (7.52) .296, (2.00) .0787, (4.42) .174, (11.38) .448, (1.60) .063

Assembly Length ± (3.18) .125

No. of positions x (2.00) .0787 + (3.50) .138