

MSP



RoHS Compliant



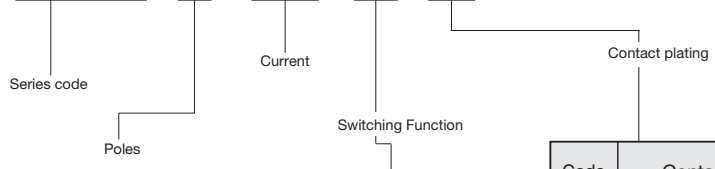
Pushbutton Switches

Specifications

Contact specs.		Silver plated contacts	Gold plated contacts
Rating	Max.	3A 125VAC	25mA 20VDC
Initial contact resistance		20mΩ max. (1A 2~4VDC)	20mΩ max. (5mA 200μVAC)
Dielectric strength		1,000VAC 1 minute	
Insulation resistance		100MΩ min.	(500VDC)
Electrical life		5,000 operations	

Part Numbering

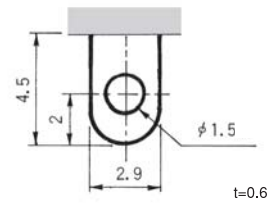
MSP 1 03 B G - Z



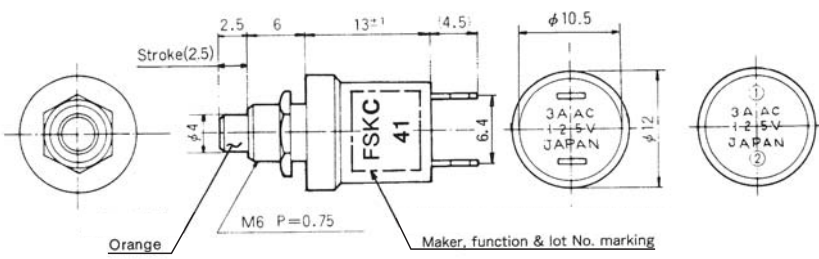
Code	Switching Function
B	ON - (OFF)
C	OFF - (ON)

Code	Contact plating
None	Silver plated
G	Gold plated

Terminal Style



SPST



Terminal numbers are not shown on the switch.

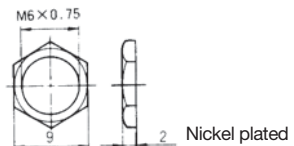
Switching function	Push	
Part No.		
MSP103B-Z	ON	(OFF)
▲ MSP103BG-Z	ON	(OFF)
Connecting terminals	1-2	—
MSP103C-Z	OFF	(ON)
★ MSP103CG-Z	OFF	(ON)
Connecting terminals	—	1-2

Standard Accessories

(Supplied with switch)

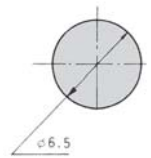
Hex Nut

140008010237



Panel Cut-Out Dimensions

Panel thickness : 3.5 mm max.



Soldering Specifications

- (1) Manual Soldering
Device : Soldering iron
- (2) 380°C, 3 seconds, Max.

(ON)&(OFF) : Momentary.

▲ : Inquiry products.

★ : Made to order products.