

EXTRA-DEEP 30.5-MM PUSHBUTTON ENCLOSURES, TYPE 4X



IEC 60529, IP66

APPLICATION

Designed to house 30.5-mm oil-tight pushbuttons, switches and pilot lights. Enclosures provide protection against dirt, dust, oil and water. Extra-deep design accommodates additional contact blocks for pushbuttons.

See *Mild Steel* chapter for related mild steel enclosures.

SPECIFICATIONS

- 14 gauge bodies, 16 gauge covers; Type 304 or Type 316 stainless steel
- Seams continuously welded and ground smooth
- Captivated cover screws thread into sealed wells
- Bonding provision on door; grounding nut on body
- 4-way pushbutton holes accept all brands of oil-tight pushbuttons, switches and pilot lights
- Enclosures 6.00 x 4.00 x 4.75 in. (152 x 102 x 121 mm) and larger have internal detachable hinge to hold cover open during wiring, yet permit immediate removal
- Oil-resistant gasket

FINISH

Cover and sides of body have smooth #4 brushed finish.

ACCESSORIES

Industrial Corrosion Inhibitors
HOL-SEALERS Hole Seals
Tamper-Resistant Screws

BULLETIN: PB1S

INDUSTRY STANDARDS

UL 508A Listed; Type 4, 4X, 12; File Number E61997
cUL Listed per CSA C22.2 No 94; Type 4, 4X, 12; File Number E61997

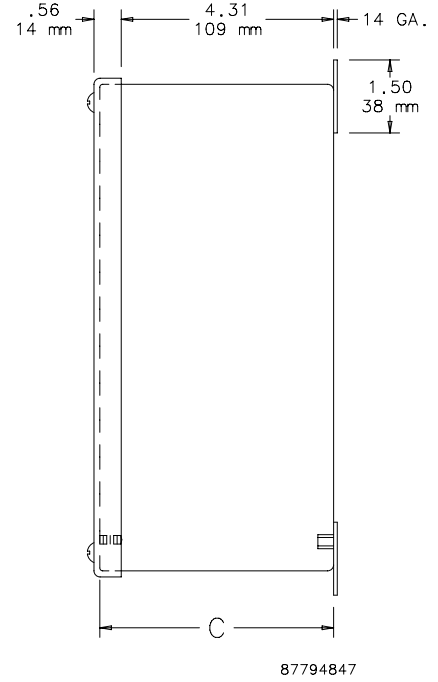
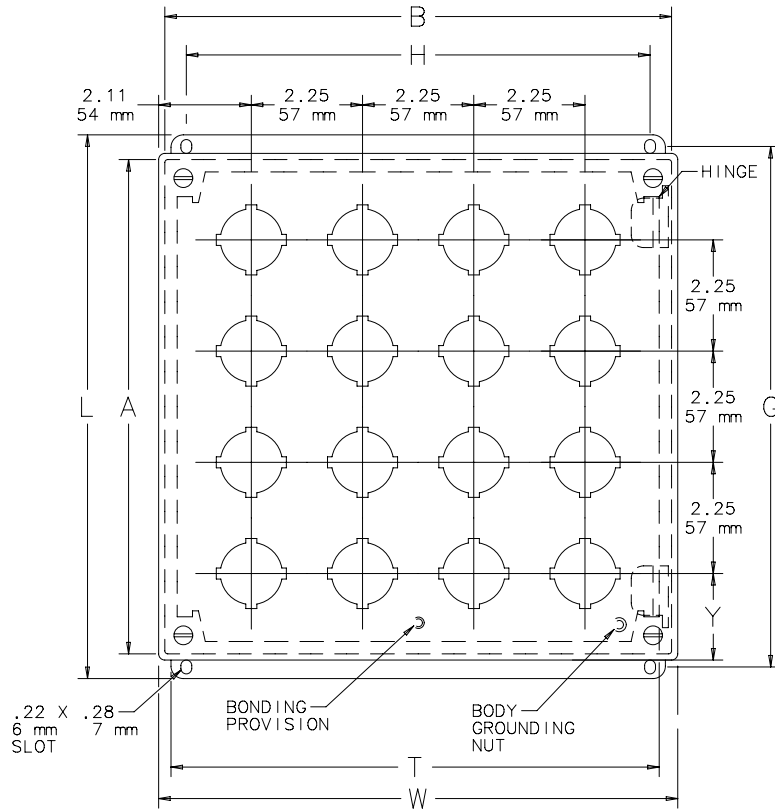
NEMA/EEMAC Type 4X, 12, 13

CSA File Number 42186: Type 4, 4X, 12

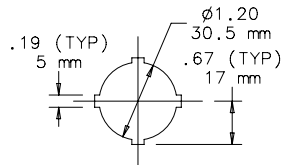
Standard Product

Catalog Number	AxBxC in./mm	Stainless Steel Type	Gauge	Number of Holes	Mounting G x H in./mm	Overall L x W in./mm	T in./mm	Y in./mm
E1PBXSS	4.00 x 4.00 x 4.75	304	16	1	4.50 x 3.12	5.00 x 4.22	3.75	2.11
	102 x 102 x 121				114 x 79	127 x 107	95	54
E2PBXSS	6.00 x 4.00 x 4.75	304	14	2	6.50 x 3.12	7.00 x 4.22	3.75	1.98
	152 x 102 x 121				165 x 79	178 x 107	95	50
E3PBXSS	8.00 x 4.00 x 4.75	304	14	3	8.50 x 3.12	9.00 x 4.22	3.75	1.86
	203 x 102 x 121				216 x 79	229 x 107	95	47
E4PBXSS	10.00 x 4.00 x 4.75	304	14	4	10.50 x 3.12	11.00 x 4.22	3.75	1.73
	254 x 102 x 121				267 x 79	279 x 107	95	44
E16PBXSS	11.75 x 10.75 x 4.75	304	14	16	12.25 x 9.88	12.75 x 10.97	10.50	2.61
	298 x 273 x 121				311 x 251	324 x 279	267	66
E16PBXSS6	11.75 x 10.75 x 4.75	316	14	16	12.25 x 9.88	12.75 x 10.97	10.50	2.61
	298 x 273 x 121				311 x 251	324 x 279	267	66

Catalog number ending in 6 is Type 316L stainless steel.



87794847



30.5mm 4-WAY

NOTE: Cover bonding provision location varies based on pushbutton pattern.

Hole Arrangement

