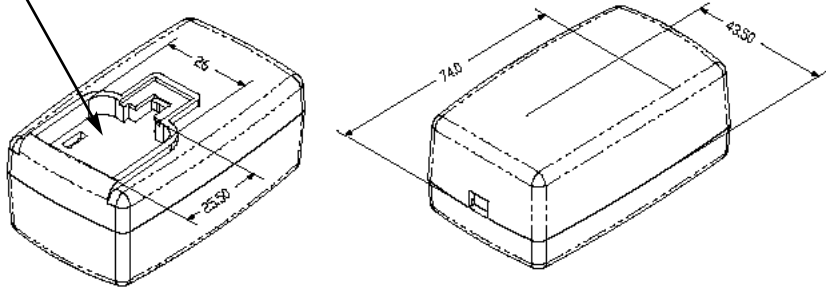


PROPRIETARY INFORMATION:
 PROPRIETARY OF GLOBTEK, INC. ANY REPRODUCTION, DISCLOSURE OR USE OF THIS DRAWING, IN WHOLE OR IN PART, IS HEREBY PROHIBITED EXCEPT AS SPECIFIED IN WRITING BY GLOBTEK, INC.

REVISION			
REV	DESCRIPTION	DATE	APPROVED
A	INITIAL RELEASE, RFS.16559, CH	07/27/09	HM
B	ADD NOTE,RFS. 16810, CH	08/06/09	HM
C	UPDATE PACKING, RFS. 17671, CH	12/10/09	HM
D	UPDATE PACKING, RFS. 24373, SO	03/05/13	HM
E	ADD STANDARD RATED AT 5A/6A, RFS. 24659, JS	04/22/13	HM
F	UPDATE MECHANICAL DRAWING, RFS. 24839, BS	05/24/13	HM



STANDARD OPTION SHIPS WITHOUT AC PINS INSTALLED

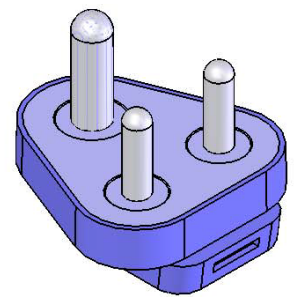


1. MATERIAL

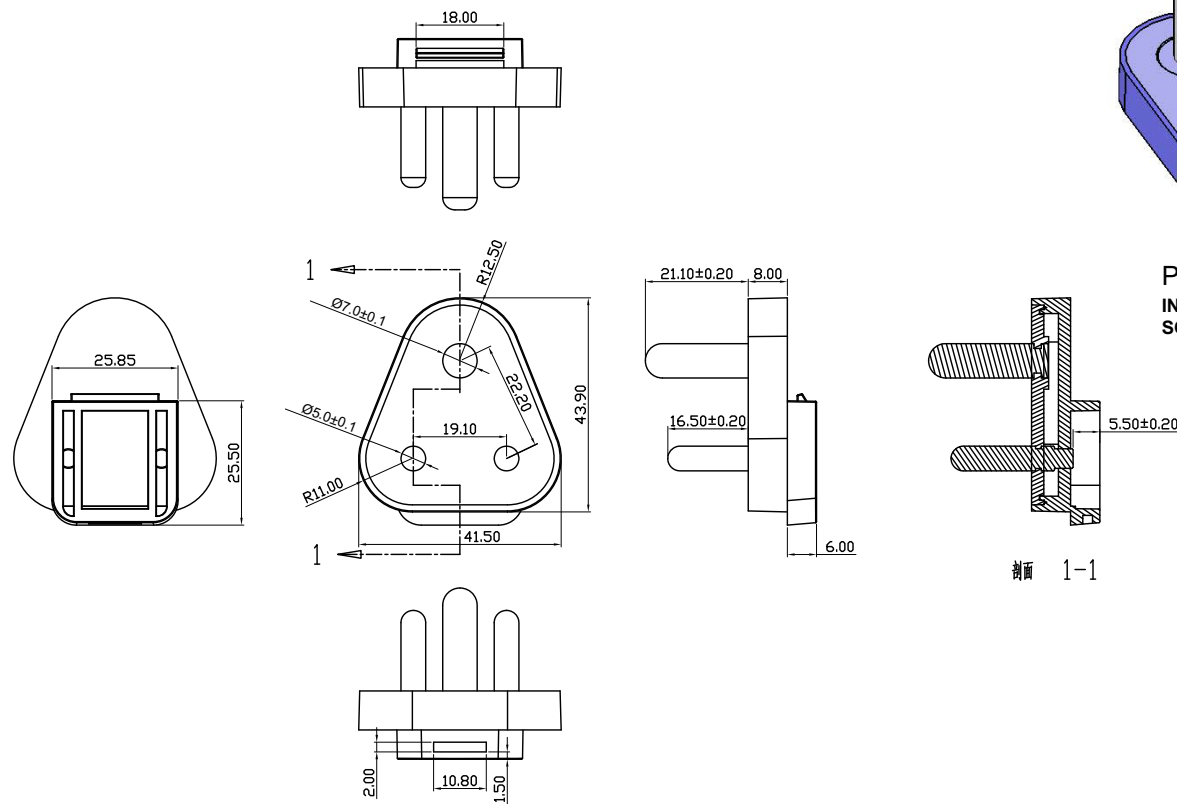
HIGH IMPACT PLASTIC, 94V0 POLYCARBONATE, NON-VENTED, COLOR BLACK

2. INPUT CONNECTOR:


INDIA: STANDARD IS 1293, RATED 6A
 SOUTH AFRICA: STANDARD SANS 164-3, RATED 5A/6A
 BRITISH: STANDARD BS 546, RATED 5A



P/N: Q-IN(R)
 INDIA
 SOUTH AFRICA

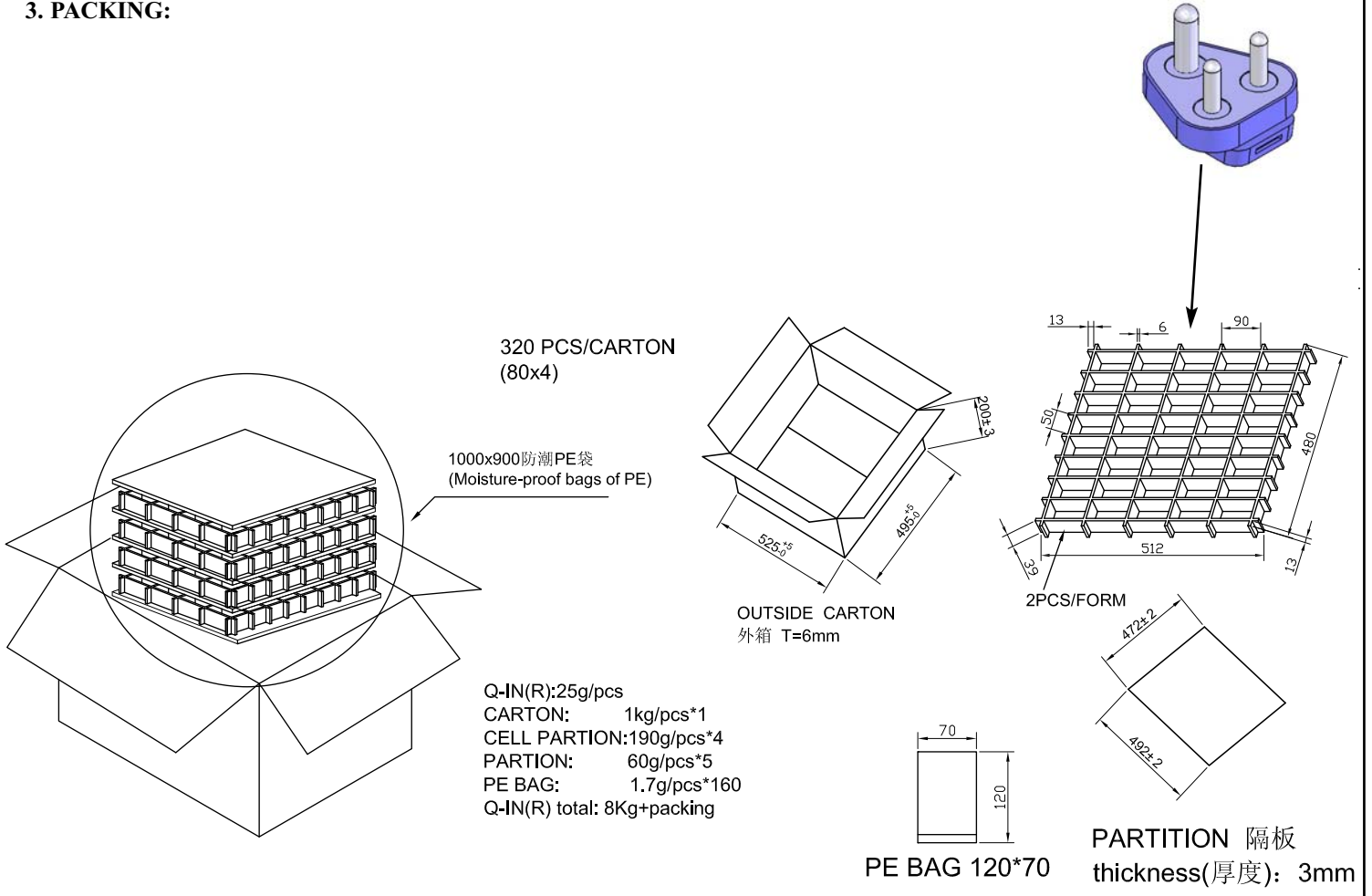


NOTE: GROUND/EARTH PIN IS NOT ELECTRICALLY CONNECTED TO POWER SUPPLY

Foot Note: Globtek Inc. will not be liable for the safety and performance of these power supplies if unauthorized access and repair occurs. End user should consult applicable UL, CSA or EN standards for proper installation instructions. Limitation of Use: Globtek product are not authorized for use as mission critical components in life support, hazardous environment, nuclear or aircraft applications without prior written approval from the CEO of Globtek Inc.	DASH NO.	PART NO	REV.	DESCRIPTION	NOTES	
	TABULATION BLOCK					
			TOLERANCES: DECIMALS ANGULAR .xx +/- 0.1 +/- 1' .xxx +/- .005		 186 Veterans Dr. Northvale, NJ 07647 Tel. 201-784-1000 Fax 201.784.0111 www.globtek.com	
	INIT.BY: CH	DATE: 07/27/09	MILLIMETERS ANGULAR .xx +/- 0.3 +/- 1' .xxx +/- .013			
DRAWN: NF	DATE: 07/27/09	FSCN No.: G, N	SIZE A	MODEL NO: N/A	REV. F	
APRVD : HM	DATE: 07/27/09	SCALE: NONE	PART NO: Q-IN(R)	SHEET 1 OF 2		

PROPRIETARY INFORMATION:
 PROPRIETARY OF GLOBTEK, INC. ANY REPRODUCTION, DISCLOSURE OR
 USE OF THIS DRAWING, IN WHOLE OR IN PART, IS HEREBY
 PROHIBITED EXCEPT AS SPECIFIED IN WRITING BY GLOBTEK, INC.

3. PACKING:



 GlobTek, Inc. www.globtek.com		186 Veterans Dr. Northvale, NJ 07647 Tel. 201-784-1000 Fax 201.784.0111	
DWG TITLE: INTERCHANGEABLE PLUG FOR GT-4XXXX SERIES, INDIA/SOUTH AFRICA			
MODEL NO: N/A		REV. F	
PART NO: Q-IN(R)		SHEET 2 OF 2	