

SERIES 19
2" Diameter, 15 Amp

FEATURES

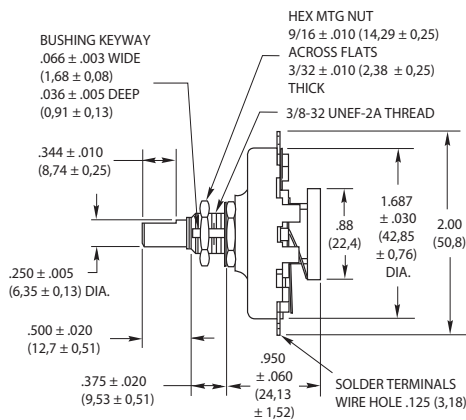


- UL Recognized
- Rugged Construction
- Choice of Termination



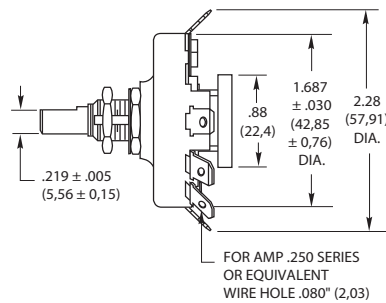
DIMENSIONS In inches (and millimeters)

Solder Lug Terminals

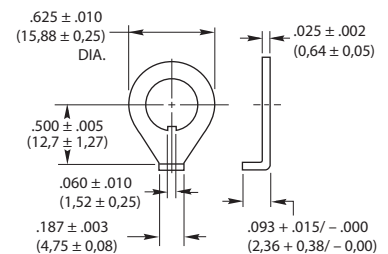


'Faston' Terminals

All dimensions not shown are the same as the Solder Lug Terminals.



Non-Turn Washer Detail



Grayhill part number and date code marked on label. Customer part number marked on request.

SPECIFICATIONS

Electrical Rating

Rated: UL Recognition: File Number E35289
 15 Amps, 120 Vac, non-inductive load.
 One Amp, 120 Vdc, non-inductive load.
Additional Grayhill Rating: 7.5 Amps, 220 Vac, non-inductive load.

This rating is based on the following criteria:
 Overload—50 operations at 125% rated ac load and 150% rated DC load.
 Endurance—6000 operations at rated load with 900 Vac dielectric strength before and after test.

Temperature Rise—Not to exceed 30°C when carrying rated ac load after endurance test.
 Contacts will carry 20 Amps at 115 volts AC with 30°C maximum temperature rise.

Contact Resistance: (Measured at 2 Vdc and approximately 100 mA) for new switch approximately 10 milliohms.
 Insulation Resistance: Approximately 100,000 Mohms. Between mutually insulated parts.

Voltage Breakdown: Approximately 2500 Vac between mutually insulated parts.

Materials and Finishes
Rotor Contact: Silver alloy
Stator Contact: Silver alloy
Shaft: 303 Stainless steel
Stop Rivet: Steel, tin/zinc-plated
Mounting Bushing: Brass, tin/zinc-plated
Base and Drive Hub: Heat resistant, electrical grade phenolic.

Materials and Finishes

Rotor Contact: Silver alloy
Stator Contact: Silver alloy
Shaft: 303 Stainless steel
Stop Rivet: Steel, tin/zinc-plated
Mounting Bushing: Brass, tin/zinc-plated
Base and Drive Hub: Heat resistant, electrical grade phenolic.

Mounting Nut: Brass, tin/zinc-plated or stainless steel.

Detent Mechanism: Brass, silver-plated

"Faston" Terminal: Brass, silver-plated

Solder Terminal: Brass, silver-plated

Mounting Hardware: One mounting nut 9/16" across flats, 3/32" thick and one non-turn washer (see detail) are supplied with each switch.

Additional Characteristics

Single Pole, Single Deck: 2 to 11 positions plus common 30° Indexing.

Contacts: Non-shorting type

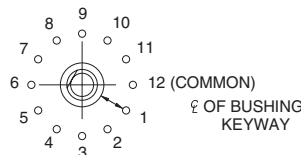
Stops: A rivet provides the fixed stop on all switches. Minimum number of positions is 2, and maximum is 11. Terminal 12, the common, is isolated from rotation.

Rotational Torque: 12 to 36 ounce-inches on average for new switches.

Contact Force: Approximately 12 ounces

Shaft Flat Orientation: Opposite point of contact (see circuit diagram).

Circuit Diagram viewed from shaft end with switch in position #1



Available from your local Grayhill Distributor.

For prices and discounts, contact a local Sales Office, an authorized local Distributor or Grayhill.