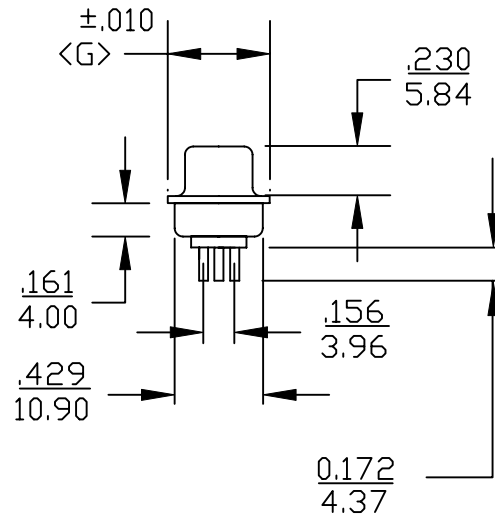
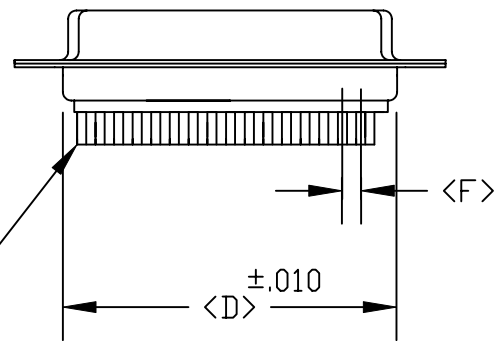
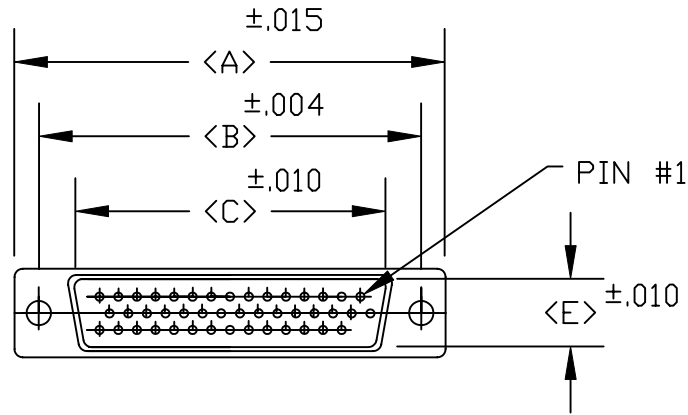


DESCRIPTION: **HIGH DENSITY DIP SOLDER FEMALE**

POS.	A	B	C	D	E	F	G
15	1.213	0.984	0.644	0.756	0.311	0.090	0.496
	30.80	24.99	16.34	19.20	7.90	2.29	12.60
26	1.550	1.312	0.966	1.091	0.311	0.090	0.496
	39.15	33.32	24.53	27.70	7.90	2.29	12.60
44	2.087	1.852	1.512	1.618	0.311	0.090	0.496
	53.00	47.04	38.40	41.10	7.90	2.29	12.60
62	2.732	2.500	2.156	2.256	0.311	0.095	0.496
	69.30	63.50	54.76	57.30	7.90	2.41	12.60
78	2.638	2.406	2.057	2.169	0.429	0.095	0.606
	69.92	61.00	52.26	55.10	10.90	2.41	15.39



180-XXX-212-XX1

SERIES _____

POSITIONS _____

015 _____

026 _____

044 _____

062 _____

078 _____

GENDER _____

1 = MALE

2 = FEMALE

TERMINATION _____

1 = DIP SOLDER

SHELL PLATING _____

2 = TIN PLATED

HARDWARE OPTIONS _____

00 = NO HARDWARE

01 = .098" CLINCH NUT(BRD SIDE)

02 = .250" CLINCH NUT(BRD SIDE)

03 = .250" CLINCH NUT(MTG SIDE)

91 = .225" 4-40 SPACER/BRD LOCK

PLATING OPTIONS _____

1 = GOLD FLASH

SPECIFICATIONS:

MATERIALS:

SHELL: STEEL, TIN PLATED

INSULATOR: UL 94V-0 RATED BLACK

GLASS-FILLED POLYESTER

ELECTRICALS:


CURRENT RATING: 2 AMPS

CONTACT RESISTANCE: 15 mOHMS MAX

INSULATOR RESISTANCE: 1000 MOHMS MIN

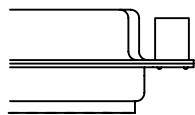
VOLTAGE: 500V AC FOR 1 MINUTE

TEMPERATURE: -50°C TO +100°C

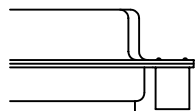
	THESE DRAWINGS AND SPECIFICATIONS ARE THE PROPERTY OF NorComp AND SHALL NOT BE REPRODUCED, COPIED OR USED AS THE BASIS FOR THE MANUFACTURE OR SALE OF APPARATUS WITHOUT WRITTEN PERMISSION.		DRAWN: PAM JENKINS	DATE: 8-12-98
			CHECKED:	DATE:
<h1>NorComp</h1>			SCALE:	SHEET OF
			DWG NO.	
180-XXX-212-XX1				

DESCRIPTION: CLINCH NUT HARDWARE

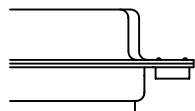
ALL CLINCH-NUTS ARE 4-40 INTERNAL THREADS



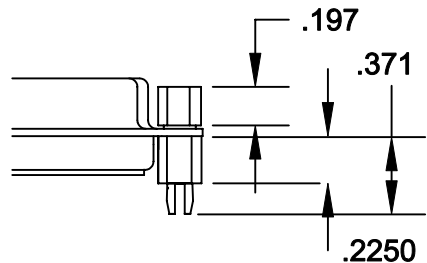
03X..... .250" (MATING SIDE) - CN8



02X250" (BOARD SIDE) - CN2




01X098" (BOARD SIDE) - CN1



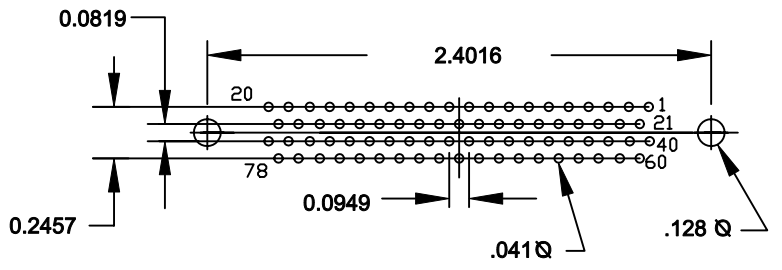
91X225" (BOARD SIDE) - .197 MATING SIDE - CN10/SFS0440

NOTE: 4-40 FEMALE SCREW LOCK IS REMOVABLE

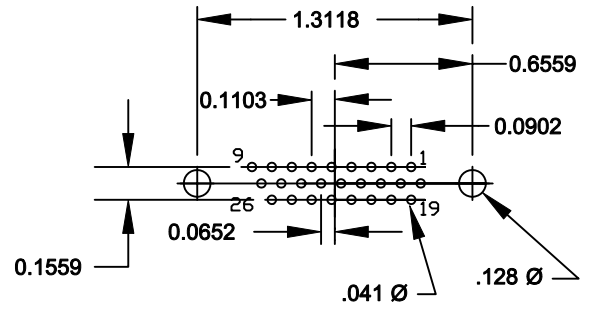
	THESE DRAWINGS AND SPECIFICATIONS ARE THE PROPERTY OF NorComp AND SHALL NOT BE REPRODUCED, COPIED OR USED AS THE BASIS FOR THE MANUFACTURE OF SALE OF APPARATUS WITHOUT WRITTEN PERMISSION.		DRAWN: WAYNE ROBBINS	DATE: 8-23-98
	NorComp		CHECKED: PAM JENKINS	DATE: 8-24-98
SCALE:			SHEET 1 OF 1	REV 1
DWG NO.			CLINCH-NUT OPTIONS	

DESCRIPTION: HIGH DENSITY DIP SOLDER FEMALE FOOTPRINT

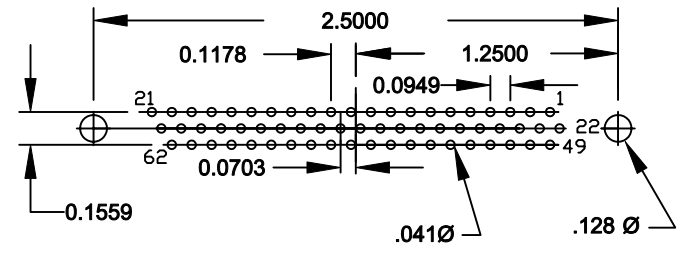
78 POSITION FEMALE



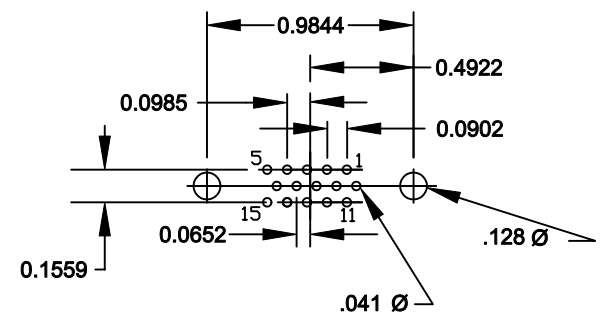
26 POSITION FEMALE



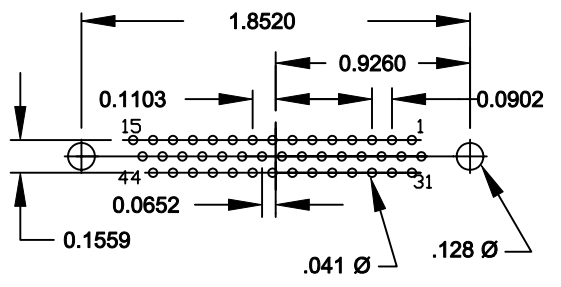
62 POSITION FEMALE



15 POSITION FEMALE



44 POSITION FEMALE



	THESE DRAWINGS AND SPECIFICATIONS ARE THE PROPERTY OF NorComp AND SHALL NOT BE REPRODUCED, COPIED OR USED AS THE BASIS FOR THE MANUFACTURE OF SALE OF APPARATUS WITHOUT WRITTEN PERMISSION.		DRAWN: PAM JENKINS	DATE: 10-29-01
			CHECKED:	DATE:
<h1>NorComp</h1>	SCALE:	SHEET 1 OF 1	REV 3	
	DWG NO. HIGH DENSITY VERTICAL FEMALE FOOTPRINT			