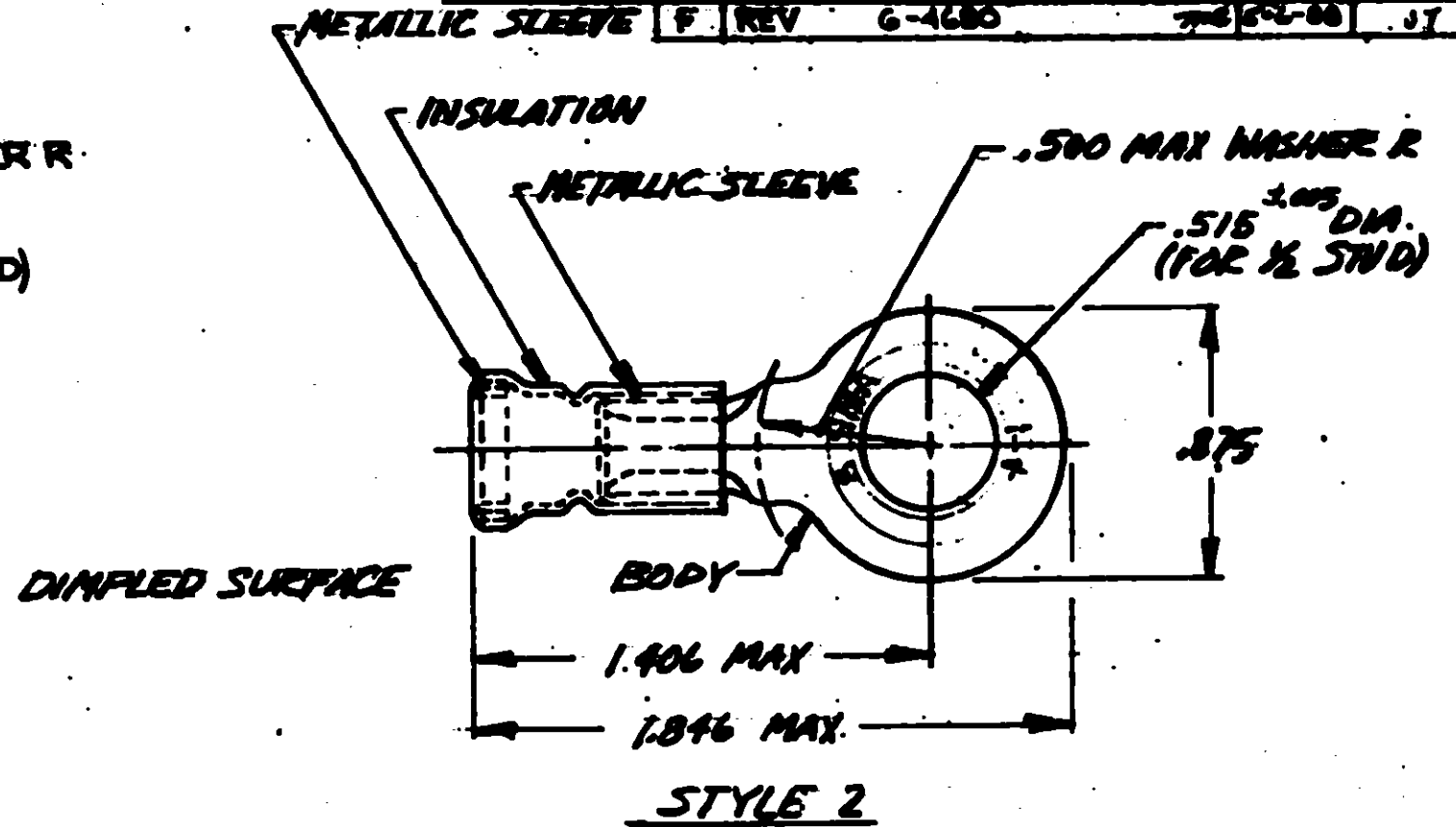
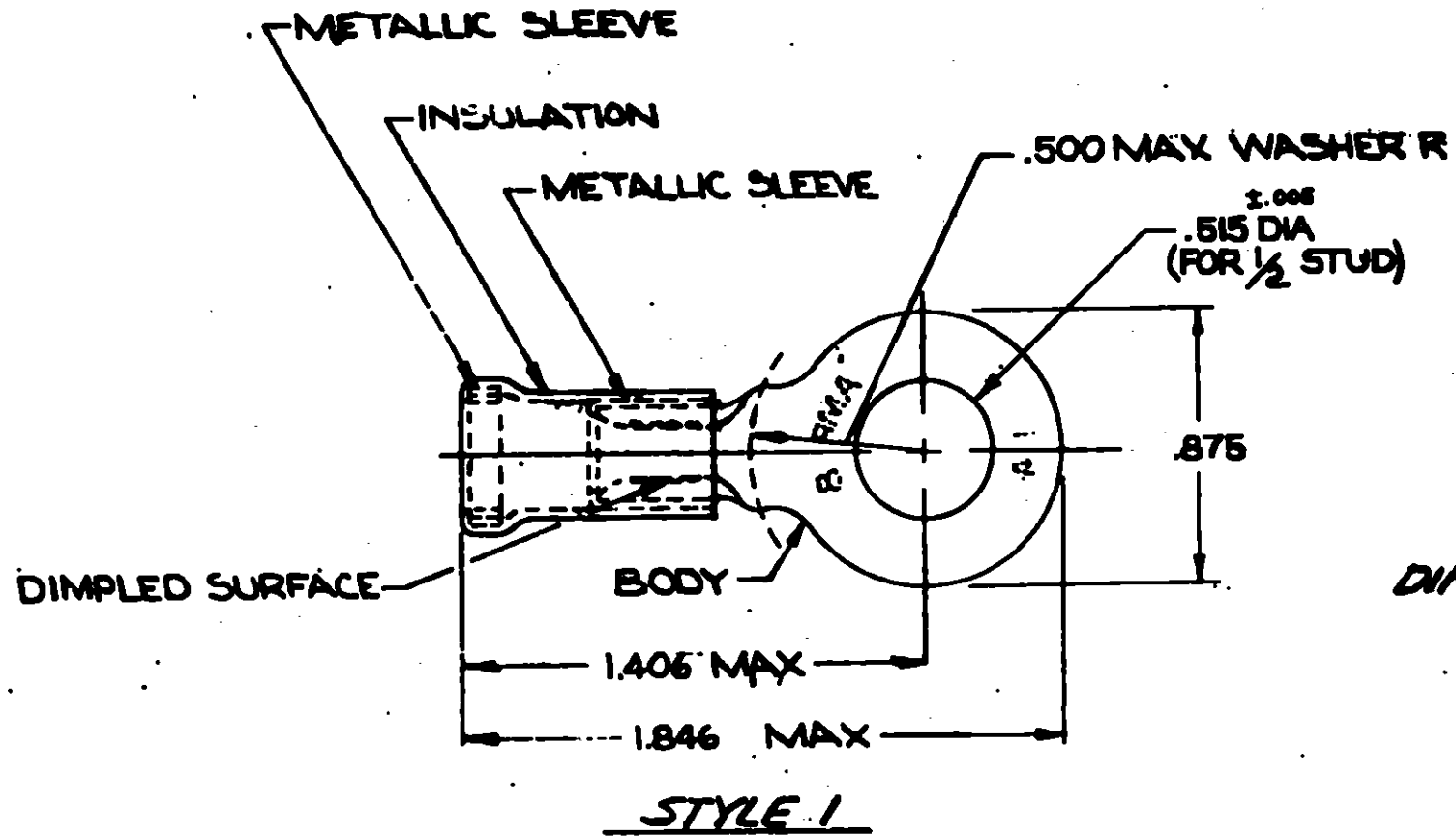


© 1969 BY AMP INCORPORATED. ALL RIGHTS RESERVED. AMP PRODUCTS COVERED BY PATENTS AND OR PATENTS PENDING.

REVISIONS				
ZONE	LTR	DESCRIPTION	DATE	APPROVED
	C	REDRAWN & REVISED PER 8243	1-6-70	Chan
	D	REV. PER P-8347	2-28-70	JM
	E	QES 2-1 / G-2109	3-25-70	
	F	REV 6-4680	7-6-70	JT



TONGUE MATERIAL THICKNESS = .040 ±.003
FOR 'A' MAX WIRE INS DIA

TABLE I


1	WIRE TERMINAL	SEE TABLE II	BODY: COPPER (QQ-C-576)
			TIN PL (MIL-T-10727)
			INSULATION: PVC COLOR: RED
			METALLIC SLEEVE: COPPER (QQ-C-576)
			METALLIC BAND: STEEL (QQ-S-698)
			(ASTM A193)
QTY	DESCRIPTION	PART NO.	MATERIAL & FINISH
UNLESS OTHERWISE SPECIFIED DIMENSIONS ARE IN INCHES			 AMP INCORPORATED HARRISBURG, PENNSYLVANIA
TOLERANCES ON: DECIMALS ±.008 ANGLES ± 30°			
MATERIAL			NAME
SEE TABLE I			WIRE TERMINAL AMPLI-BOND-RING TONGUE WIRE SIZE: 8
CONTRACT NO.			SIZE
DR. Wayne M. Miller 11-14-69			B
CR. M. Eschminger 1-6-70			CODE IDENT NO.
APP. J. Walsh 1-7-70			00779
M. Eschminger 1-7-70			NUMBER
DEGN APP. J. Walsh			328463
STAMP 288			SCALE NTS
			SHEET 1 OF 1

TABLE II

328460	377	1	OBSOLETE
328463	298	2	
PART NO.	'A'	STYLE	