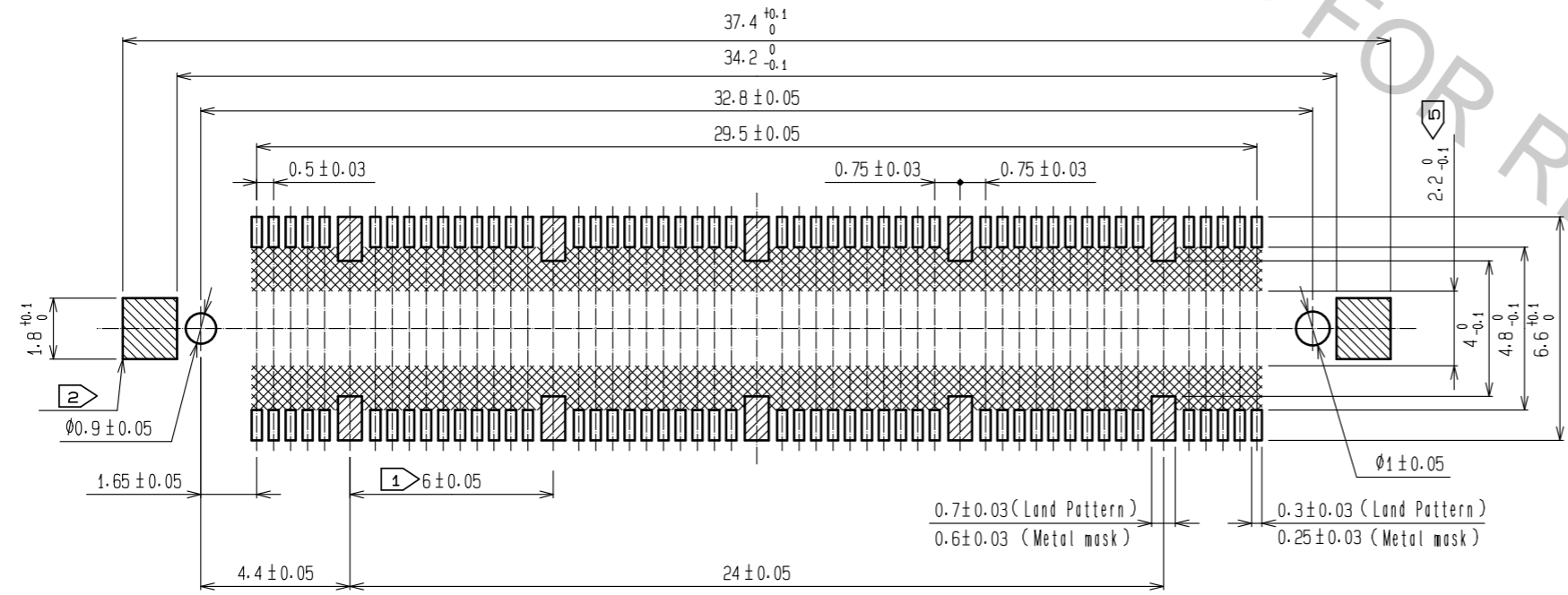


RECOMMENDED LAND PATTERN DIMENSION OF PCB
 ▲ (RECOMMENDED METAL MASK: t=0.15 mm)

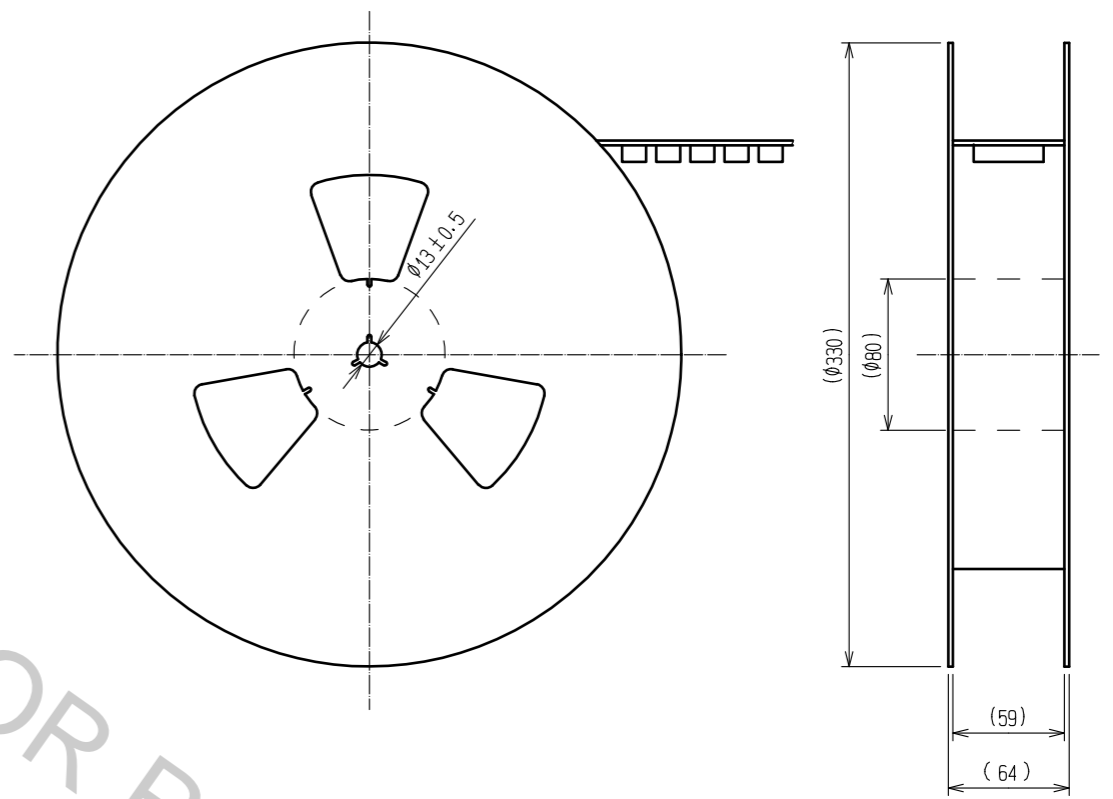
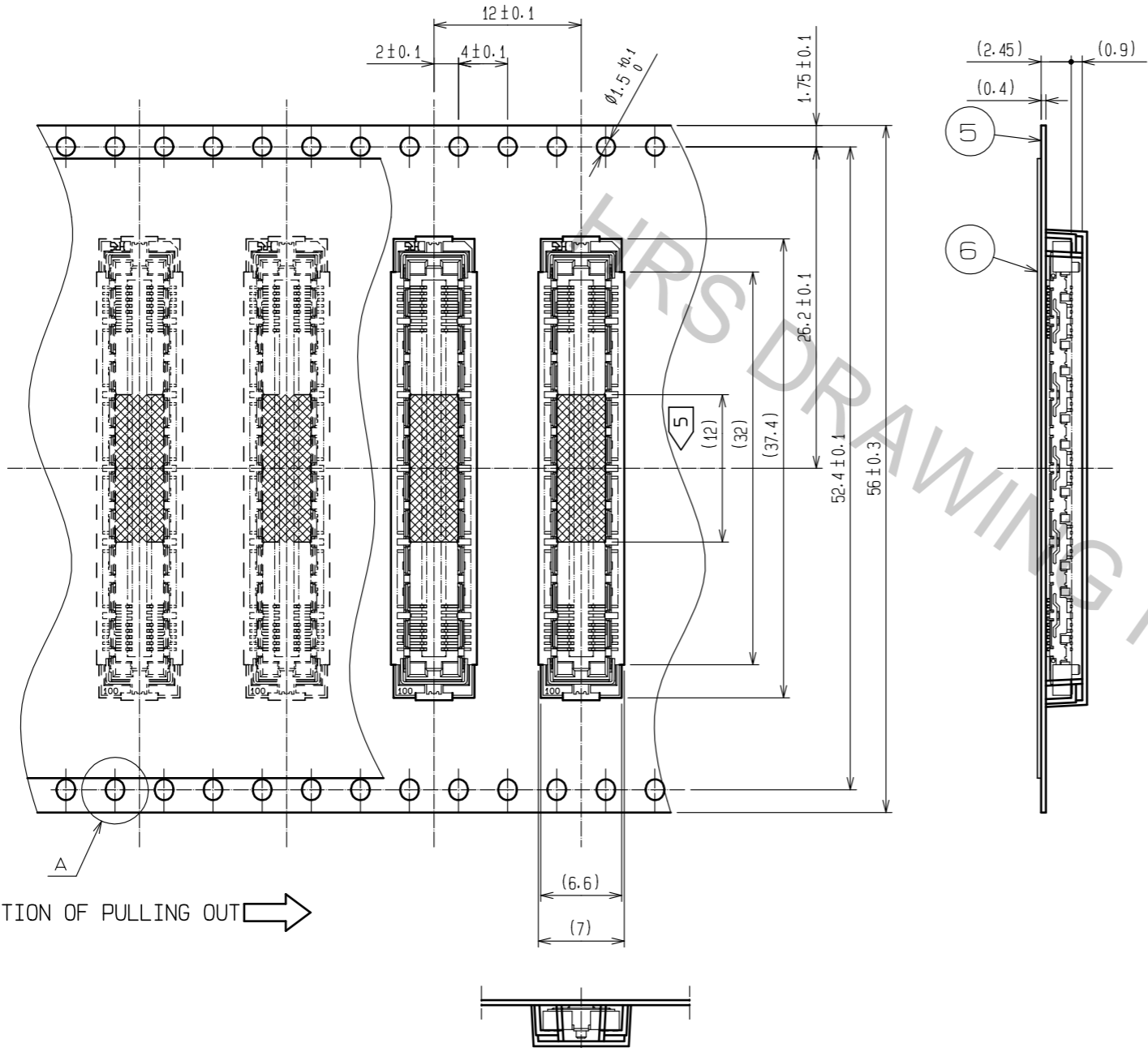


- NOTES
- ① 10 HATCHED PARTS: GROUND CIRCUIT.
 - ② 2 HATCHED PARTS: GROUND CIRCUIT.
 - ③ SMT LEAD-COPLANARITY: 0.1 MAX.
 - ④ THIS PRODUCT HAS NO POLARITY TO PATTERN FOR MOUNTING.
 - ⑤ MAKE SURE WIDTH OF PATTERN IS WITHIN THAT OF LAND, OR LEAD MAY TOUCH PATTERN. (THIS APPLIES TO HATCHED AREA.)
 - ⑥ TO BE EMBOSSED CARRIER TAPED AS SPECIFIED IN SHEET 2.
 - ⑦ THE DIMENSIONS IN PARENTHESES ARE FOR REFERENCE.

2	PHOSPHOR BRONZE	CONTACT AREA: GOLD 0.1 μm min.	7	POLYIMIDE	(TAP FOR VACUUM PICKUP)		
		LEAD AREA: GOLD 0.05 μm min.	6	PET	TOP COVER TAPE		
		UNDER PLATING: NICKEL 1 μm min.	5	PS	EMBOSSED CARRIER TAPE		
1	LCP	BEIGE UL94V-0	3, 4	PHOSPHOR BRONZE	TIN-PLATING		
NO.	MATERIAL	FINISH, REMARKS	NO.	MATERIAL	FINISH, REMARKS		
UNITS		SCALE	COUNT	DESCRIPTION OF REVISIONS	DESIGNED	CHECKED	DATE
mm		5 : 1	1	DIS-F-00000141	KJ. NISHIWAKI	HT. YAMAGUCHI	15.03.16
HRS HIROSE ELECTRIC CO., LTD.		APPROVED : HS. OKAWA	06.11.02	DRAWING NO. EDC3-152634-22			
		CHECKED : HS. OZAWA	06.11.01	PART NO. FX11A-100S/10-SV(92)			
		DESIGNED : KY. NAKAMURA	06.11.01	CODE NO. CL573-0704-4-92			
		DRAWN : AK. SUZUKAWA	06.11.01	1/2			

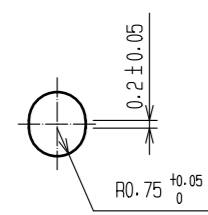
DRAWING FOR PACKING(2:1)

REELED DIMENSION(Free)

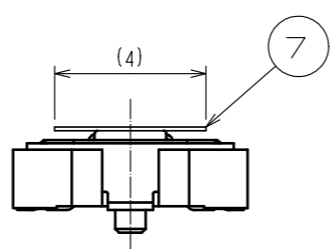


THE DIRECTION OF PULLING OUT

A(5:1)



DETAIL FOR TAPE PICKUP (5:1)



- NOTES
- 1 REEL : 1000 CONNECTORS.
 - 2 MINIMUM 10 COMPARTMENTS FROM BOTH REEL ENDS REMAIN EMPTY.
 - 3 THIS PRODUCT HAS NO POLARITY TO TAPE AND REEL PACKAGING.
 - 4 THE DIMENSIONS IN PARENTHESES ARE FOR REFERENCE.
 - 5 REMOVE THE VACUUM PICKUP TAPE AFTER MOUNTING THE CONNECTOR.

HRS	DRAWING NO.	EDC3-152634-22
	PART NO.	FX11A-100S/10-SV(92)
	CODE NO.	CL573-0704-4-92
		2/2

Apr.1.2017 Copyright 2017 HIROSE ELECTRIC CO., LTD. All Rights Reserved.