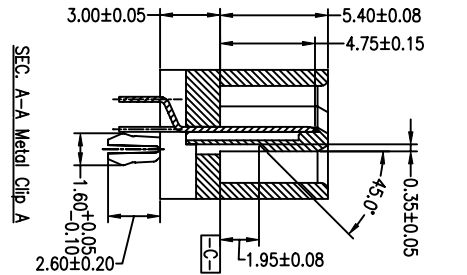
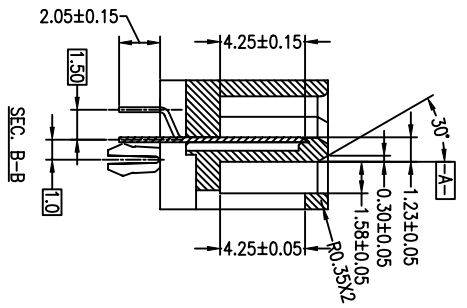
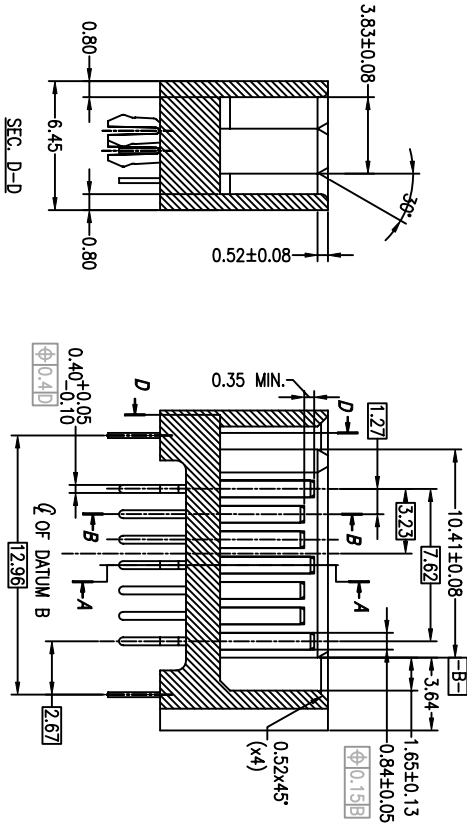
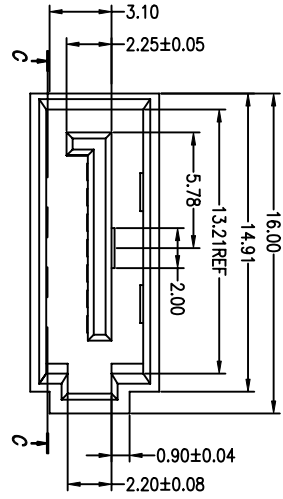
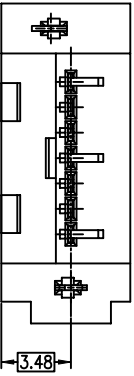
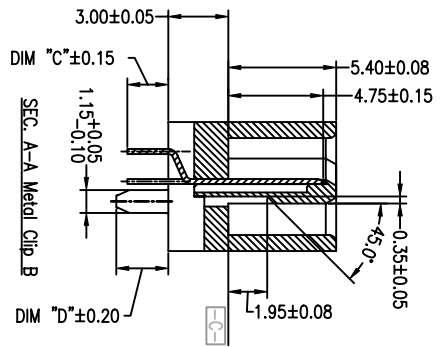


mot'l. code	tolerances unless otherwise specified			CUSTOMER COPY		FCI	
lir	ecn no	dr	dtte	linear	projection	title	www.fciconnect.com
A	T05-0213	W.L	09/09/05	.XX ± 0.20	MM	S-ATA SIGNAL PLUG	
B	T08-1033	S.L/lin	02/29/08	.XXX ± 0.10	NA	DIP VERTICAL TYPE ASS'Y	
sheet	revision	dr	engr	Wade Liu	scale	product family	code
index	sheet	1	2	3	NA	SATA	TWN
						10035690	sheet
							1 of
						cage code	



SUFFIX	DIM C	DIM D
OTHERS	2.05MM	2.60MM
-XX4XLF	3.05MM	3.40MM



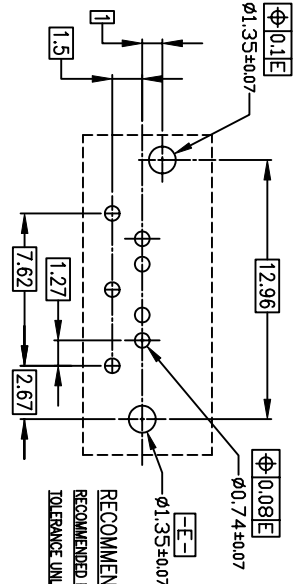
1 2

1 2

3 1

4

mot'l. code		tolerances unless otherwise specified		CUSTOMER COPY		FCI	
lir	ecn no	dr	dtte	lineor	projection	title	www.fciconnect.com
A	T05-0213	V/L	09/09/05	.XX ± 0.20	MM	S-ATA SIGNAL PLUG	
B	T08-0033	S/Lin	02/29/08	.XXX ± 0.10	MM	DIP VERTICAL TYPE ASS'Y	
		angles		0° ± 2°	MM		
		dr	09/09/05	Wade Liu	MM		
		engr	09/09/05	Wade Liu	MM		
		chr	09/09/05	Wade Liu	MM		
		oppl	09/09/05	Stirling Lin	MM		
sheet index	revision	sheet	1	2	3	3	4
			1	2	3	3	4
						cage code	
						10035690	
						code	
						TWN	
						sheet	
						2 of	



RECOMMENDED MOUNTING LAYOUT  
 RECOMMENDED PCB I = 1.60mm  
 TOLERANCE UNLESS OTHERWISE SPECIFIED

- 10035690-X X X X X X X X X X
- BLANK: Plating Tin/Lead
  - LF: Plating Lead Free
  - 3W: 3 Wall
  - 4W: 4 Wall
  - 2: Metal clip A WITH 2.05 MM TAIL
  - 3: Metal clip B WITH 2.05 MM TAIL
  - 4: Metal clip B WITH 3.05 MM TAIL (4W ONLY)
- Au thickness of contact point  
 0: 15u" min  
 2: 3u" min  
 Housing Color  
 0: Black

- NOTES :
1. MATERIAL
    - i) HOUSING : HIGH TEMPERATURE THERMOPLASTIC UL94V-0
    - ii) TERMINAL : COPPER ALLOY
    - iii) HOLD DOWN : COPPER ALLOY
  2. FINISH
    - i) TERMINAL : Au PLATING AT CONTACT POINT  
 100u" min Sn-Pb or PURE TIN PLATING AT SOLDER TAIL WITH NICKEL UNDERPLATE
    - ii) HOLD DOWN : 100-200 u" Sn-Pb or PURE TIN PLATING.
  3. P/N : 10035690-XXXXLF  
 THE HOUSING WILL WITHSTAND EXPOSURE TO 260 DEGREE C PEAK TEMPERATURE FOR 10 SECONDS IN A WAVE SOLDER APPLICATION WITH 1.6MM MINIMUM THICK CIRCUIT BOARD.
  4. Packaging spec: GS-14-840.
  5. Product Spec: GS-12-194.

mot'l. code	tolerances unless otherwise specified			CUSTOMER COPY	FCI	title	product family	code
ltr	ecn no	dr	date	line ar	projection	S-ATA SIGNAL PLUG	SATA	TWN
A	T05-0213	W.L	09/09/05	.XX ± 0.20	MM	DIP VERTICAL TYPE ASS'Y	10035690	3 of
B	T08-1033	S.Lin	02/29/08	.XXX ± 0.10	scale			
		angles		0° ± 2°	NA			
		dr	09/09/05	Wade Liu				
		engr	09/09/05	Wade Liu				
		chr	09/09/05	Wade Liu				
		oppl	09/09/05	Stirling Lin				
sheet index	revision	sheet	1	2	3			

1 | 2

1 | 2

3 |

4

ACAD

3 |

4