

# Customer Information Sheet

DRAWING No.: M50-470XX45

SHEET 2 OF 2

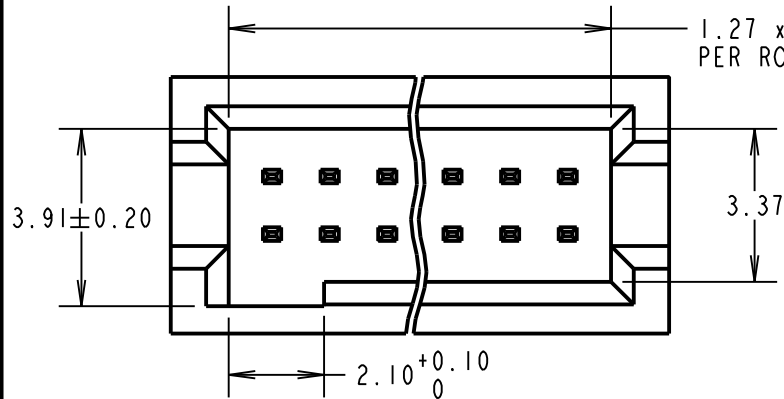
IF IN DOUBT - ASK

(C)

NOT TO SCALE

THIRD ANGLE PROJECTION

ALL DIMENSIONS IN mm

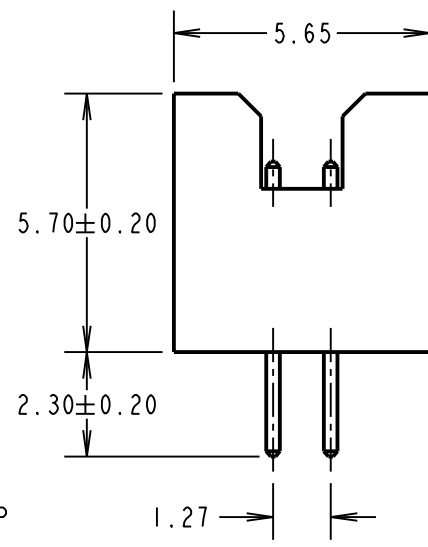
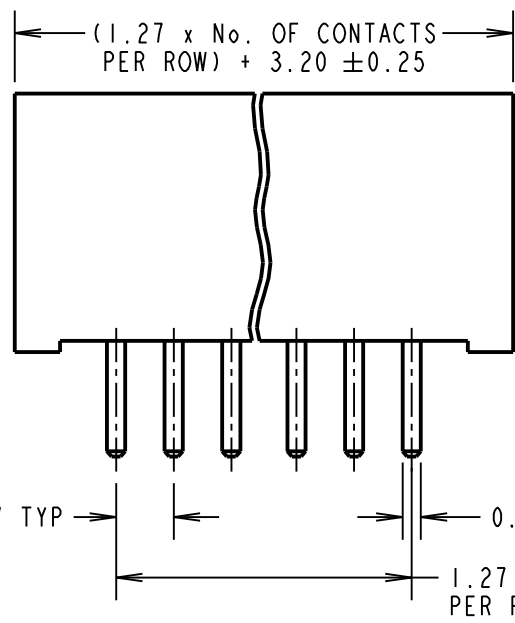


ORDER CODE:  
**M50-470XX45**

No. OF CONTACTS PER ROW:  
03 TO 50

FINISH: \_\_\_\_\_  
GOLD ALL OVER CONTACT

SPECIFICATIONS:  
 MATERIAL:  
 MOULDING = LCP UL94V-0, BLACK  
 CONTACT = COPPER ALLOY  
 FINISH:  
 CONTACT = GOLD  
 ELECTRICAL:  
 CURRENT RATING = 1A  
 VOLTAGE PROOF = 300V AC FOR ONE MINUTE  
 CONTACT RESISTANCE = 20mΩ MAX  
 INSULATION RESISTANCE = 1000MΩ MIN  
 MECHANICAL:  
 DURABILITY = 100 CYCLES MIN  
 ENVIRONMENTAL:  
 OPERATING TEMPERATURE = -40°C TO +105°C  
 PACKING:  
 TUBE  
 FOR COMPLETE SPECIFICATION, SEE COMPONENT SPECIFICATION C029XX (LATEST ISSUE).



NOTES:  
 1. RECOMMENDED PCB HOLE SIZE =  $\varnothing 0.65 \pm 0.05$ mm.  
 2. ALL TOLERANCES ARE  $\pm 0.15$  UNLESS OTHERWISE STATED.

SB	7	29.07.13	11873
NAME	ISS.	DATE	C/NOTE
APPROVED:		S.BENNETT	
CHECKED:		S.FLOWER	
DRAWN:		J. ENRIGHT	
CUSTOMER REF.:			
ASSEMBLY DRG:			

**HARWIN**

www.harwin.com  
 technical@harwin.com

THIS DRAWING AND ANY INFORMATION OR DESCRIPTIVE MATTER SET OUT HEREON ARE CONFIDENTIAL AND COPYRIGHT PROPERTY OF THE HARWIN GROUP AND MUST NOT BE DISCLOSED, LOANED, COPIED OR USED FOR MANUFACTURING, TENDERING OR FOR ANY OTHER PURPOSE WITHOUT THEIR WRITTEN PERMISSION.

~~TOLERANCES~~  
~~X = ±1mm~~  
~~X.X = ±0.25mm~~  
~~X.XX = ±0.10mm~~  
~~X.XXX = ±0.01mm~~  
 ANGLES = ±5°  
 UNLESS STATED

MATERIAL:  
 SEE ABOVE

FINISH: SEE ABOVE

S/AREA: mm<sup>2</sup>

TITLE:  
 1.27mm PITCH DIL  
 VERTICAL PIN HEADER ASSY

DRAWING NUMBER:  
**M50-470XX45**

SHT  
 2 OF 2