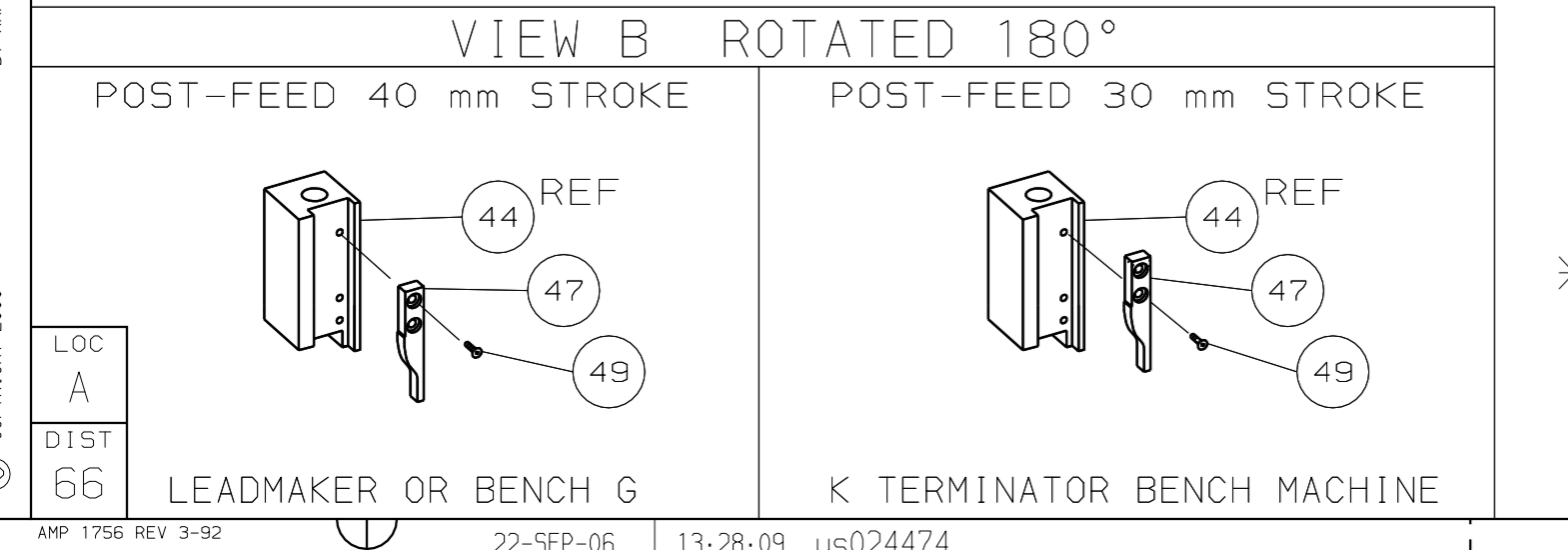


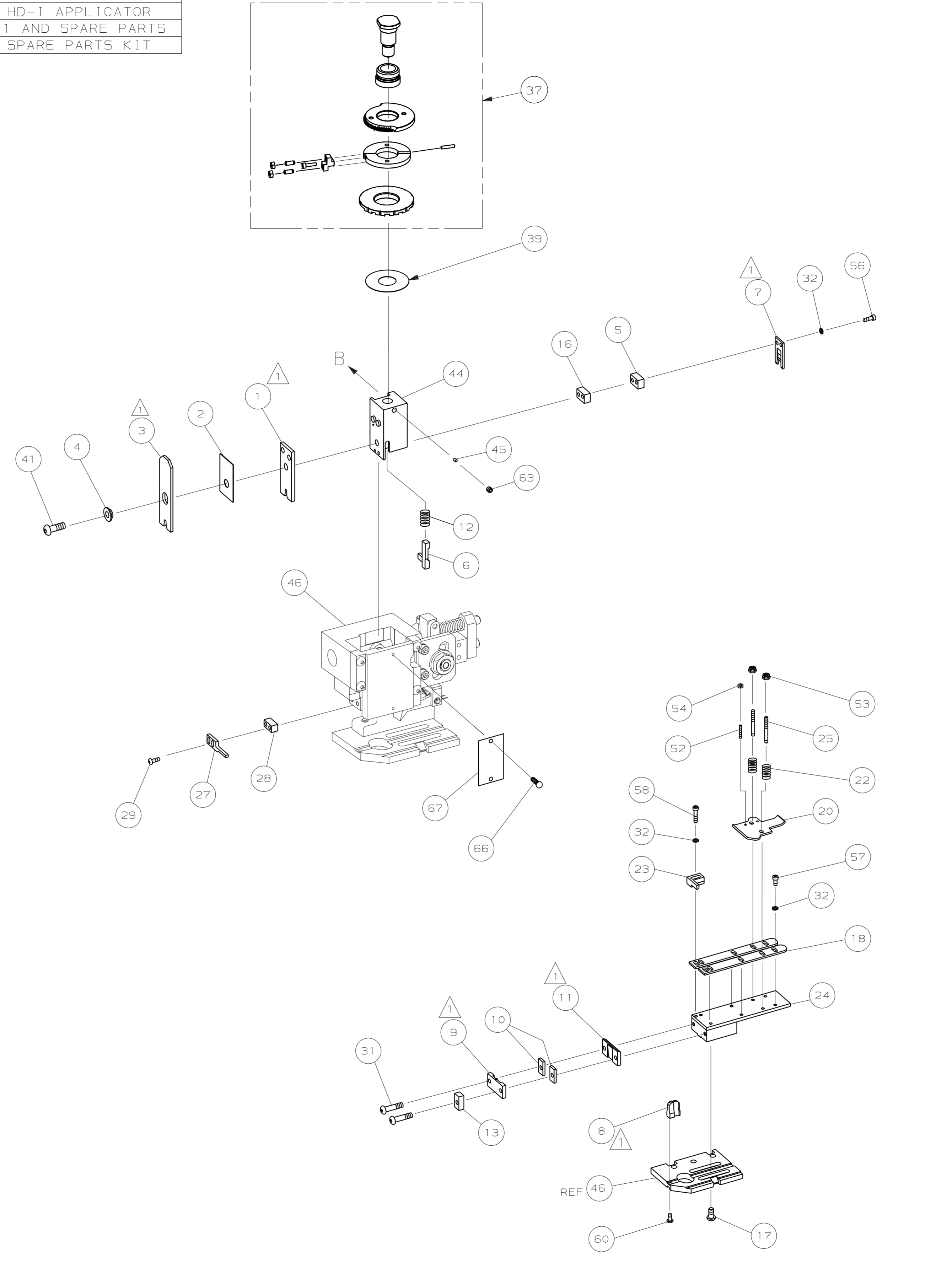
PART NUMBER	REV	FIRST USED	TERMINATOR	FEED TYPE	DESCRIPTION
1529004-1	D		- BENCH & LEADMAKER	MECH POST FEED	HD-I APPLICATOR
7-1529004-1	D		- BENCH & LEADMAKER	MECH POST FEED	-1 AND SPARE PARTS
7-1529004-7	A		-	-	SPARE PARTS KIT

CRIMP DATA (AMP TERMINAL)			
TERMINAL NAME: FASTIN-FASTON TAB "5MM SERIES"			
CRIMP	SIZE	TYPE	RANGE
WIRE	2.79 [1.110 IN]	F	1.00 - 3.00mm <sup>2</sup>
INSUL	4.57 [1.180 IN]	F	2.10-3.10 [.083-.122 IN]
WIRE STRIP LENGTH		APPL INSTRUCTION	
5.00-6.00 [1.197-.236 IN]		408-8323 & 408-8490	
TERMINAL			FEED
APPL SPEC 114-15070 (A) 114-15007 (B)			27.50 [1.082 IN]
TERMINALS APPLIED			
144839 (A)	-	-	-
142108 (B)	-	-	-
142089 (B)	-	-	-
-	-	-	-
-	-	-	-
-	-	-	-
-	-	-	-
-	-	-	-
-	-	-	-
WIRE SIZE	CRIMP HEIGHT	REF SETTING	
mm <sup>2</sup> AWG			
3.00mm <sup>2</sup>	2.23 ±0.05 [1.088 ±.002 IN]	A 1	
2.00mm <sup>2</sup>	1.98 ±0.05 [1.078 ±.002 IN]	B 8	
1.0mm <sup>2</sup> & 1.0mm <sup>2</sup>	1.98 ±0.05 [1.078 ±.002 IN]	B 8	
0.5mm <sup>2</sup> & 1.5mm <sup>2</sup>	1.95 ±0.05 [1.077 ±.002 IN]	C 0	
1.40mm <sup>2</sup>	1.78 ±0.05 [1.070 ±.002 IN]	C 3	
1.0mm <sup>2</sup> & 0.5mm <sup>2</sup>	1.78 ±0.05 [1.070 ±.002 IN]	C 3	
0.5mm <sup>2</sup> & 0.5mm <sup>2</sup>	1.65 ±0.05 [1.065 ±.002 IN]	E 0	
1.00mm <sup>2</sup>	1.62 ±0.05 [1.064 ±.002 IN]	E 1	
-	-	-	
-	-	-	
-	-	-	
-	-	-	
-	-	-	
-	-	-	

RECOMMENDED SPARE PARTS.  
 2. GREASE RAM, CAM, CAM FOLLOWER AND FEED ROD LIGHTLY.  
 3. LUBRICATE DAILY PER THE APPLICATOR INSTRUCTION SHEET SUPPLIED WITH THE APPLICATOR.



\* WARNING:  
 ON INSTALLATION, SET WIRE DISC TO LARGEST WIRE SIZE SETTING.  
 USE OF SETTINGS BELOW MIN REQ'D CRIMP HEIGHT SETTING WILL CAUSE DAMAGE TO CRIMP TOOLING.



-	1	1	1529004	PRINT, APPLICATOR LOG SHEET	73	
-	1	1	1338705-4	DOCUMENTATION PACKAGE	72	
-					71	
-					70	
-					69	
-					68	
-	1	1	461264-5	PLATE, IDENTIFICATION	67	
-	2	2	21017-2	SCR,DRIVE (#2X.19) ID PLATE	66	
-					65	
-					64	
-	1	1	3-18031-0	SCR,SKT SET (M6X6) RAM	63	
-					62	
-					61	
-	1	1	18024-7	SCR,BHC (M4X10) ANVIL	60	
-					59	
-	2	2	1-18023-3	SCR,SHC (M4X16) HOLD DOWN	58	
-	5	5	18023-9	SCR,SHC (M4X6) STRIP GUIDE	57	
-	2	2	1-18023-4	SCR,SHC (M4X20) SLUG BLADE	56	
-					55	
-	2	2	18029-1	NUT, HEX (M3) DRAG	54	
-	2	2	986965-1	NUT, HEX SL (M4) DRAG STUD	53	
-	2	2	2-18032-2	SCR,SKT SET (M3X10) DRAG	52	
-					51	
-					50	
-	1	1	18024-3	SCR,BHC (M3X10) CAM	49	
-					48	
-	1	1	1338676-1	CAM, POST-FEED 30 & 40 mm ST	47	
-	1	1	1338662-1	APPLICATOR, BASIC (SUBASSY)	46	
-	1	1	690191-1	PLUG, NYLON	45	
-	1	1	1320998-1	RAM	44	
-					43	
-					42	
-	1	1	2-18024-6	SCREW,BHC (M8X25) CRIMPER	41	
-					40	
-	1	1	690125-1	SHIM SUBASSY	39	
-					38	
-	1	1	879103-3	FINE ADJUST HEAD SUBASSY	37	
-					36	
-					35	
-					34	
-					33	
-	9	9	18025-2	WASHER, LOCK (M4) SHEAR BL	32	
-	1	1	4-18024-2	SCR,BHC (M4X30) SHEAR PL	31	
-	1	1	4-18024-7	SCR,BHC (M4X25) SHEAR PL	30	
-	2	2	18024-8	SCR,BHC (M4X12) STRIPPER	29	
-	1	1	3-690451-2	SPACER, STRIPPER	28	
-	1	1	240639-1	STRIPPER	27	
-					26	
-	2	2	1320906-1	DRAG, STUD	25	
-	1	1	1320995-4	STRIP GUIDE	24	
-	1	1	240825-3	PLATE, STRIP HOLD DOWN	23	
-	2	2	4-22281-1	SPRING, DRAG	22	
-					21	
-	1	1	1338665-1	DRAG, STOCK	20	
-					19	
-	2	2	1338663-4	GUIDE, LOWER STRIP	18	
-	4	4	1-18024-8	SCR,BHC (M6X12) STRIP 6D PL	17	
-	1	1	1338708-1	SPACER, SLUG BLADE	16	
-					15	
-					14	
-	1	1	690481-1	SPACER, HOLD DOWN	13	
-	1	1	23846-1	SPRING, HOLD DOWN	12	
-	1	1	482305-1	PLATE, REAR SHEAR	11	
-	2	2	1-240645-6	SPACER, SHEAR PLATE	10	
-	1	1	690783-3	PLATE, FRONT SHEAR	9	
-	1	2	1333219-2	ANVIL	8	
-	1	1	1-691157-2	BLADE, SLUG	7	
-	1	1	944026-2	HOLD DOWN, TERMINAL	6	
-	1	1	8-240641-3	SPACER, SLUG BLADE	5	
-	1	1	238009-1	SPACER, BLOCK CRIMPER	4	
-	1	2	1	4-456134-6	CRIMPER, INSULATION	3
-	1	1	1	455888-4	SPACER, CRIMPER	2
-	1	2	1	456408-6	CRIMPER, WIRE	1

PART NO		DESCRIPTION		ITEM NO
-77		-71		-1
REVISION OF EACH ASSY NO (WHEN BLANK, USE DWG REVISION)				
QTY REQD PER ASSY		PARTS LIST		
		DIMENSIONS: mm [INCHES]	MATL	HT TR
		DO NOT SCALE PRINT.		
		TOLERANCES UNLESS OTHERWISE SPECIFIED:		
		1 PLC DEC ±		
		2 PLC DEC ±		
		3 PLC DEC ±		
		ANGLES ±		
		SURF TEXTURE: ✓		
		REMOVE BURRS, BREAK SHARP EDGES RO.38 MAX		
CAGE CODE	00779	CUSTOMER AND ASSEMBLY DRAWING		

THIS DRAWING IS A CONTROLLED DOCUMENT.

LAYOUT L1339509  
SET UP GAGE 458638-3

RELEASED FOR PUBLICATION  
BY AMP INCORPORATED. ALL RIGHTS RESERVED.

THIS DRAWING IS UNPUBLISHED.  
© COPYRIGHT 2000

AMP 1756 REV 3-92

LOC A  
DIST 66

1529004

D

C

B

A

RESTRICTED TO