

PERFORMANCE CHARACTERISTICS :

CURRENT RATING : 1.5A AT 20°C (FULLY LOADED)  
 1A AT 70°C (FULLY LOADED)  
 RATED VOLTAGE : 500V AC (CONT / CONT)  
 OPERATING TEMPERATURE : -55°C TO 125°C  
 CONTACT RESISTANCE : 25mΩ MAX.  
 INSERTION FORCE : 0.75 N MAX / CONT  
 EXTRACTION FORCE : 0.15 N MIN / CONT  
 INSULATION RESISTANCE : 10<sup>4</sup> MΩ MIN.

NOTES :

1. UL APPROVED WITH USR AND CNR.
2. MEASURED AT THE BOTTOM.
3. MATERIAL CONTACT : PHOSPHORBRONZE.  
HOUSING : LCP 30% GLASS-FILLED.
4. CONNECTOR PRINTED WITH P/N AND DATE CODES.
5. FOR ACTUAL CONTACT LOADINGS, SEE LOADING PATTERN MATING SIDE.)
6. 4 = LEVEL 1 (5.30)  
5 = LEVEL 2 (6.80)  
6 = LEVEL 3 (8.30)

7. 'HM2J07PE5118' LEAD FREE INDICATOR : LF = LEAD FREE  
PERFORMANCE LEVEL INDICATOR (Ref DWG No BS,C ,201844,003)
8. FOR RECOMMENDED PTH DIMENSIONS REFER DRAWING : BS,A ,201572,001
9. THIS PRODUCT (LF) MEETS EUROPEAN UNION DIRECTIVES AND OTHER COUNTRY REGULATIONS AS DESCRIBED IN GS-22-008

LOADING PATTERN : MATING SIDE

F	6	6	6	6	6	6	6	6	6	6	X	X	X	6	6	6	6	6	6	6	6	6	6	6	6
E	4	4	4	4	4	4	4	4	4	4	X	X	X	4	4	4	4	4	4	4	4	4	4	4	4
D	4	4	4	4	4	4	4	4	4	4	X	X	X	4	4	4	4	4	4	4	4	4	4	4	4
C	4	4	4	4	4	4	4	4	4	4	X	X	X	4	4	4	4	4	4	4	4	4	4	4	4
B	4	4	4	4	4	4	4	4	4	4	X	X	X	4	4	4	4	4	4	4	4	4	4	4	4
A	4	4	4	4	4	4	4	4	4	4	X	X	X	4	4	4	4	4	4	4	4	4	4	4	4
Z	X	X	X	X	X	X	X	X	X	X	X	X	X	X	X	X	X	X	X	X	X	X	X	X	X
	1	2	3	4	5	6	7	8	9	10	11	12	13	14	15	16	17	18	19	20	21	22	23	24	25

www.fciconnect.com surface  ISO 1302 tolerance std ISO 406 ISO 1101 projection mm

TOLERANCES UNLESS OTHERWISE SPECIFIED

Dr	N.Otto	2000-04-28	ANGULAR	0.X	±0.2	size	A3	Scale	1/1
Eng	N.Otto	2000-04-28	LINEAR	0.XX	±0.1	ECN	111-0044		
Chr	Alex Babu	2008-04-24	0° ±1°	0.XXX	±0.05	Product family	MILLIPACS	Spec ref	-
Appr	Alex Babu	2008-04-24							

rev	ecn no	dr	date
A	CONV R0	GNV	2002-08-28
B	EC B20190	MF	2002-11-20
C	105-0108	AB	2005-06-30
D	106-0107	AB	2006-07-12
E	108-0050	AB	2008-04-24
F	110-0098	GT	2010-04-19
G	111-0044	GT	2011-02-28

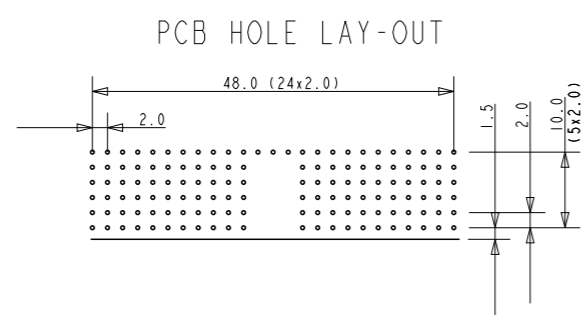
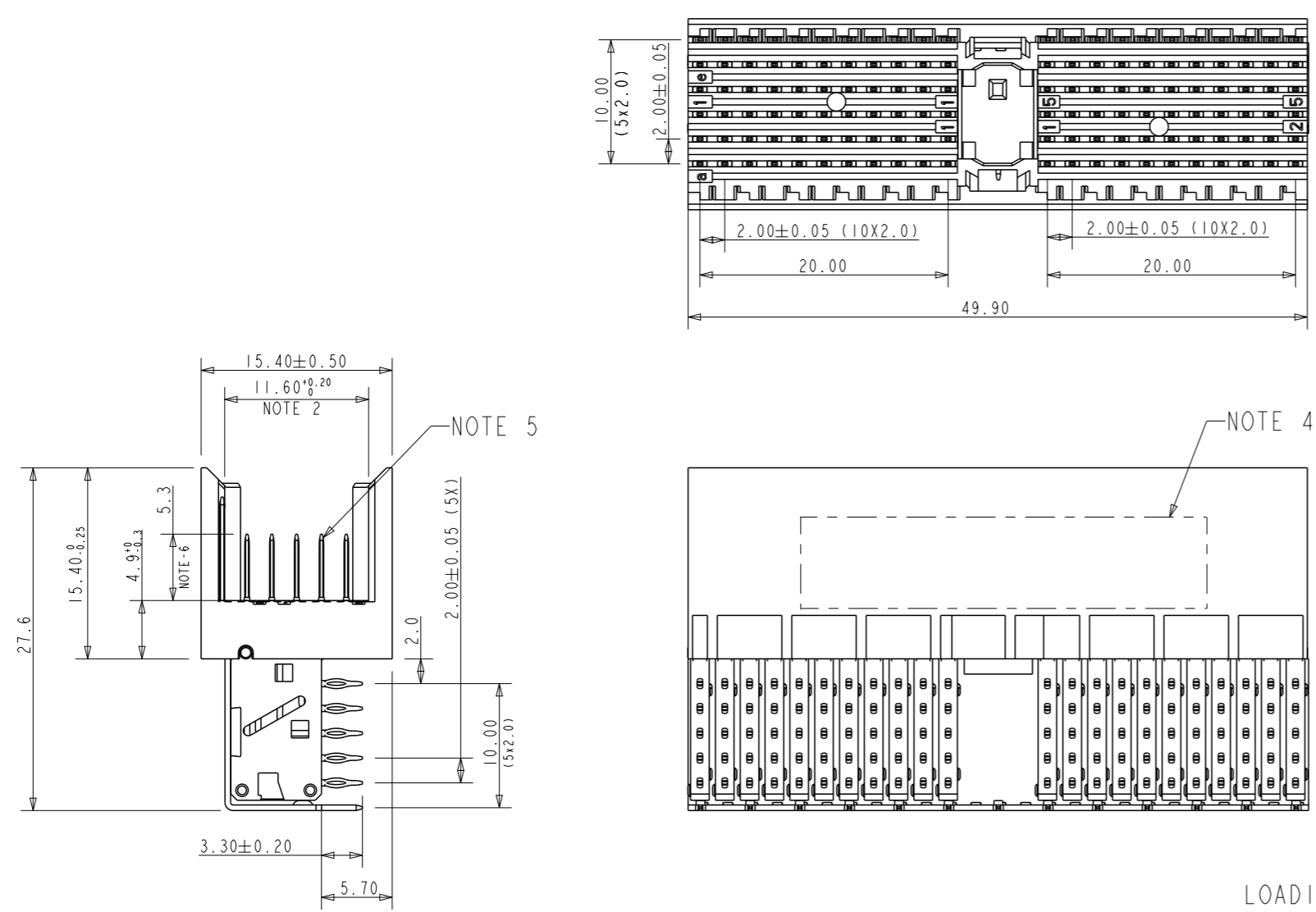
**FCI** MPACS RA HDR  
type A, shielded

catalog no HM2J07PE5118- - - -

dwg no BSC202767006

Rev. G

CUSTOMER COPY sheet 1 of 1



Copyright FCI.  
**FCI**