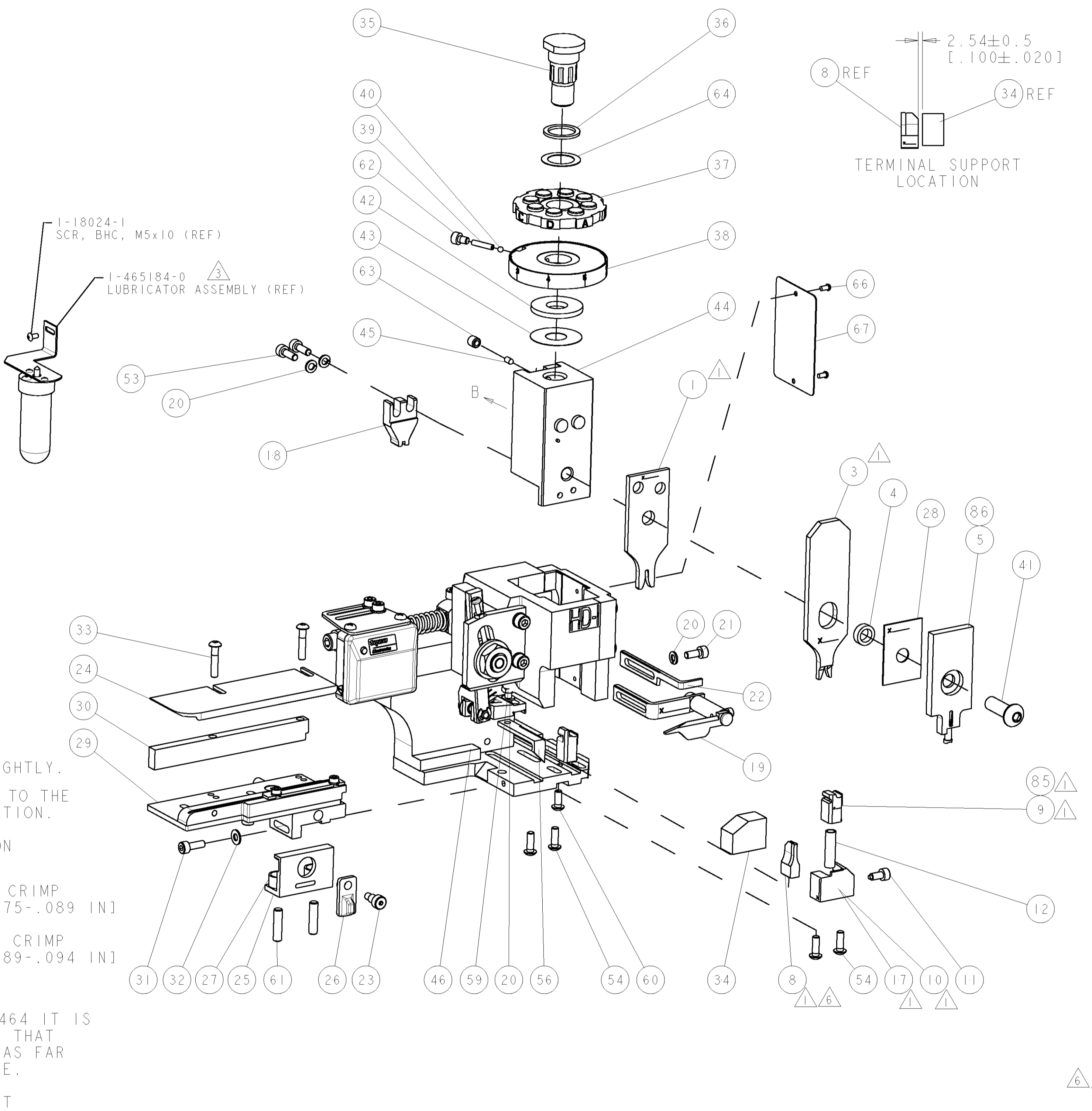
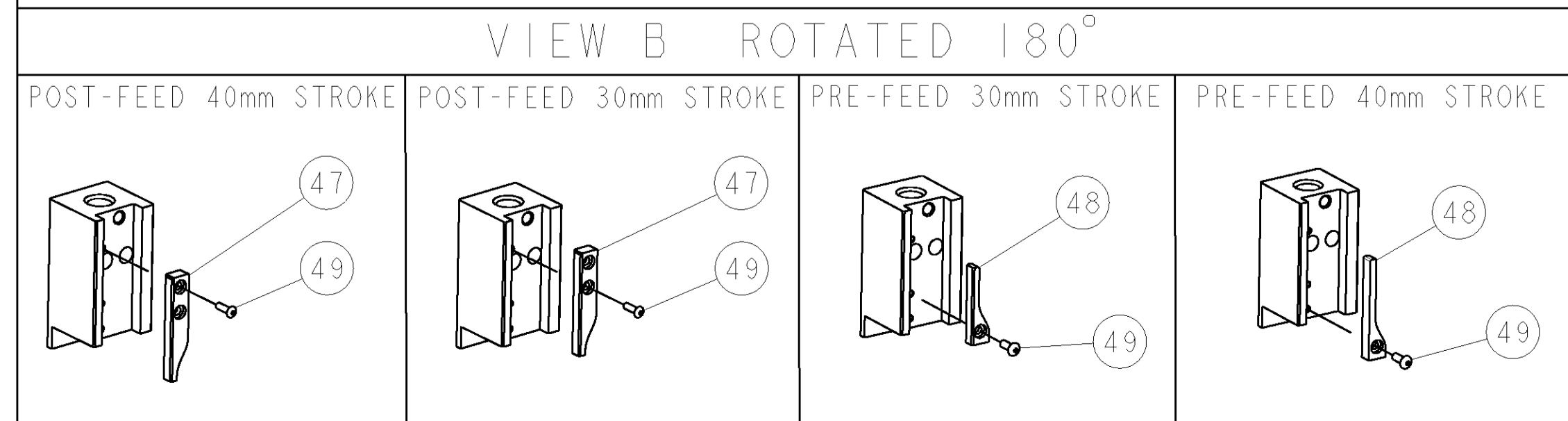


PART NUMBER	REV	TERMINATOR	FEED TYPE	DESCRIPTION
1426512-1	C	LEADMAKER	MECH POST FEED	CUTS CARRIER
1426512-2	C	BENCH	MECH PRE FEED	CUTS CARRIER
1426512-6	C	LEADMAKER	MECH POST FEED	CONTINUOUS CARRIER
7-1426512-1	C	LEADMAKER	MECH POST FEED	-1 AND SPARE PARTS
7-1426512-2	C	BENCH	MECH PRE FEED	-2 AND SPARE PARTS
7-1426512-6	C	LEADMAKER	MECH POST FEED	-6 AND SPARE PARTS
7-1426512-7	B	-	-	SPARE PARTS KIT

CRIMP DATA		TE TERMINAL		TE CRIMP SPECS	
TERMINAL NAME: MCP 1.2MM CONTACT ASSEMBLY					
CRIMP	SIZE	TYPE	RANGE		
WIRE	1.78 [.070 IN]	F	1.00-1.50mm ² or 18-16 AWG		
INSUL	2.29 [.090 IN]	SPECIAL	1.90-2.40 [.075-.094 IN]		
WIRE STRIP LENGTH 3.30-3.90 [.130-.154 IN]		APPL INSTRUCTIONS 408-8322			
TERMINAL APPL SPEC 114-18464		FEED 8.00 [.315 IN]			
TERMINALS APPLIED					
1418762	-	-	-	-	-
-	-	-	-	-	-
-	-	-	-	-	-
-	-	-	-	-	-
WIRE SIZE	CRIMP HEIGHT	PINPN & LENGTH [IN]			
1.50mm ²	1.31 ± 0.05 [.052 ± .002 IN]	1-354779-7 [.3075]			
16 AWG	1.26 ± 0.05 [.050 ± .002 IN]	2-354779-2 [.3100]			
1.00mm ²	1.10 ± 0.05 [.043 ± .002 IN]	3-354779-4 [.3160]			
18 AWG	1.05 ± 0.05 [.041 ± .002 IN]	3-354779-9 [.3185]			

- △ RECOMMENDED SPARE PARTS.
- 2. GREASE RAM, CAM, CAM FOLLOWER AND FEED ROD LIGHTLY.
- △ CERTAIN TERMINALS REQUIRE LUBRICATION. REFER TO THE APPLICATOR INSTRUCTION SHEET FOR MORE INFORMATION.
- 4. LUBRICATE DAILY PER THE APPLICATOR INSTRUCTION SHEET SUPPLIED WITH THE APPLICATOR.
- △ MAXIMUM INSULATION CRIMP WIDTH AND INSULATION CRIMP HEIGHT OF 2.45mm. WHEN APPLYING 1.90-2.25 [.075-.089 IN] INSULATION DIAMETER.
MAXIMUM INSULATION CRIMP WIDTH AND INSULATION CRIMP HEIGHT OF 2.55mm. WHEN APPLYING 2.25-2.40 [.089-.094 IN] INSULATION DIAMETER.
SEE APPLICATION SPECIFICATION TO CLARIFY.
- △ DUE TO THE DEMANDS OF APPLICATION SPEC 114-18464 IT IS IMPORTANT, IF THE ANVIL IS MOVED OR REPLACED, THAT IT IS BIASED TOWARDS THE OPERATOR'S POSITION AS FAR AS POSSIBLE WHEN RE-SECURING TO THE BASE PLATE.
- 7. TOOLING APPROVED BY GB GATD & TERMINAL PRODUCT ENGINEERING GERMANY.



PART NO	DESCRIPTION	ITEM NO
562605-2	SHEAR DEPRESSOR	86
1-879745-2	FLOATING SHEAR, FRONT	85
-	-	84
-	-	83
-	-	82
-	-	81
-	-	80
-	-	79
-	-	78
-	-	77
-	-	76
-	-	75
-	-	74
PART NO	DESCRIPTION	ITEM NO

LOC	DIST	REV	DESCRIPTION	DATE	OWN	APVD
A	66	B	SEE ECR-08-022369	05SEP2008	LJL	MC
		C	ECR-08-027239	28OCT2008	DM	GB

PART NO	DESCRIPTION	ITEM NO
-	-	73
-	-	72
-	-	71
-	-	70
-	-	69
-	-	68
-	-	67
-	-	66
-	-	65
-	-	64
-	-	63
-	-	62
-	-	61
-	-	60
-	-	59
-	-	58
-	-	57
-	-	56
-	-	55
-	-	54
-	-	53
-	-	52
-	-	51
-	-	50
-	-	49
-	-	48
-	-	47
-	-	46
-	-	45
-	-	44
-	-	43
-	-	42
-	-	41
-	-	40
-	-	39
-	-	38
-	-	37
-	-	36
-	-	35
-	-	34
-	-	33
-	-	32
-	-	31
-	-	30
-	-	29
-	-	28
-	-	27
-	-	26
-	-	25
-	-	24
-	-	23
-	-	22
-	-	21
-	-	20
-	-	19
-	-	18
-	-	17
-	-	16
-	-	15
-	-	14
-	-	13
-	-	12
-	-	11
-	-	10
-	-	9
-	-	8
-	-	7
-	-	6
-	-	5
-	-	4
-	-	3
-	-	2
-	-	1
PART NO	DESCRIPTION	ITEM NO
3-22280-3	SPRING, COMPRESSION	12
356885-4	STOP, SHEAR	11
1320921-1	SHEAR HOLDER, FRONT, CUT	10
1-462006-6	FLOATING SHEAR, FRONT	9
4-1333203-2	ANVIL, COMBINATION	8
-	-	7
-	-	6
-	-	5
-	-	4
-	-	3
-	-	2
-	-	1
PART NO	DESCRIPTION	ITEM NO
1-455889-4	DEPRESSOR, SHEAR	5
4-238011-2	BLOCK, CRIMPER SPACER	4
1752766-2	CRIMPER, INSULATION, SPECIAL	3
-	-	2
-	-	1
PART NO	DESCRIPTION	ITEM NO
1633169-2	CRIMPER, WIRE, SPECIAL	1

DIMENSIONS: mm [IN]		TOLERANCES UNLESS OTHERWISE SPECIFIED:	
9 PLC	±	9 PLC	±
4 PLC	±	4 PLC	±
4 PLC	±	4 PLC	±
ANGLES	±	ANGLES	±
MATERIAL		FINISH	
CUSTOMER DRAWING		SCALE 3:5 SHEET 1 OF 1 REV C	