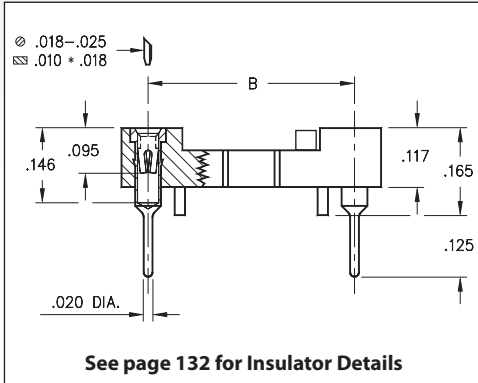
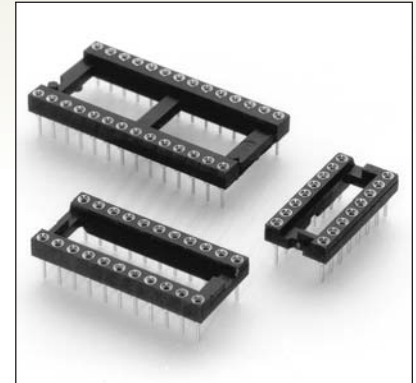


# DUAL-IN-LINE SOCKETS

## SERIES 110...605 • AUTOMATIC INSERTION • OPEN FRAME



- High temperature thermoplastic insulator with standoffs is compatible with standard automatic insertion equipment and all soldering processes
- Soft copper alloy machined pins allow clinching. Chamfered contact entry allows for ease of IC insertion without bent leads
- Hi-Rel, 4-finger BeCu #30 contact is rated at 3 amps. See page 253 for details
- Series 110 uses MM #1005 pins. See page 166 for details
- For Electrical, Mechanical and Environmental Data, see page 264 for details



Total number of pins				Quantity per tube	ORDERING INFORMATION	
	A	B	C			
6	0.3	0.3	0.4	67	110-XX-306-41-605000	
8	0.4	0.3	0.4	50	110-XX-308-41-605000	
14	0.7	0.3	0.4	28	110-XX-314-41-605000	
16	0.8	0.3	0.4	25	110-XX-316-41-605000	
18	0.9	0.3	0.4	22	110-XX-318-41-605000	
20	1.0	0.3	0.4	20	110-XX-320-41-605000	
24	1.2	0.3	0.4	16	110-XX-324-41-605000	
22	1.1	0.4	0.5	18	110-XX-422-41-605000	
24	1.2	0.6	0.7	16	110-XX-624-41-605000	
28	1.4	0.6	0.7	14	110-XX-628-41-605000	
32	1.6	0.6	0.7	12	110-XX-632-41-605000	
40	2.0	0.6	0.7	10	110-XX-640-41-605000	

XX=Plating Code  
See Below



SPECIFY PLATING CODE XX =		91	93	41	43
Sleeve (Pin)		200 μ" Sn/Pb	200 μ" Sn/Pb	200 μ" Sn	200 μ" Sn
Contact (Clip)		10 μ" Au	30 μ" Au	10 μ" Au	30 μ" Au

