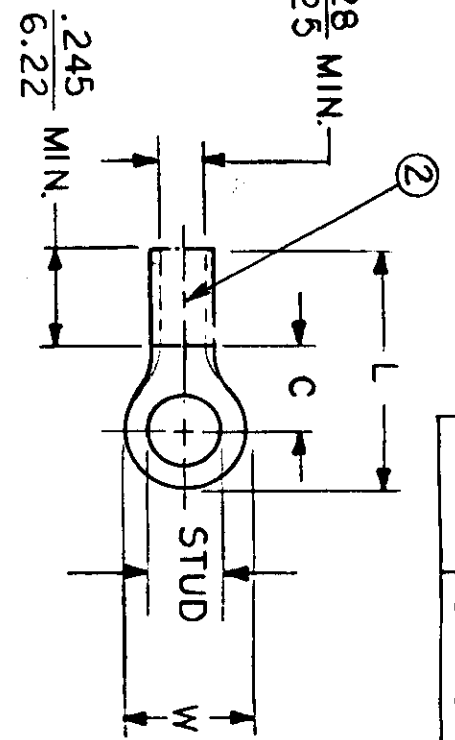


NOTES:
 ① MAT'L: COPPER (STOCK TKN $\frac{.040}{.102}$)
 ② BRAZED SEAM
 ③ 650°F MAX. OPERATING TEMP.

PLATING: WATTS BATH NICKLE (.0002 MIN)

STUD SIZES: ($\pm .005$)
 02 = .094 209 = .209
 04 = .119 413 = .413
 06 = .146
 08 = .173
 10 = .198
 14 = .265
 56 = .328
 38 = .390

ALL DIMENSIONS = $\frac{\text{INCHES}}{\text{MM}}$



FILE NO. C-T-CD-301-01

WIRE SIZE: 12-10 AWG
 40-6.0 MM²

PART NUMBER	"W"	"C" MIN.	"L" MAX.	AVAILABLE STUD SIZES	TITLE:	DIMENSIONAL TOLERANCES UNLESS OTHERWISE SPECIFIED	
						FRAC.	DEC.
C-T-301-	$\frac{.750}{19.05}$	$\frac{.611}{15.52}$	$\frac{1.280}{32.51}$	14, 56, 38, 76, 12	RING TONGUE TEMP-TERM.	±	±
C-T-328-	$\frac{.375}{9.53}$	$\frac{.303}{7.70}$	$\frac{.785}{19.94}$	04, 06, 08, 10, 209	650°F MAX.	±	±
C-T-330-	$\frac{.530}{13.46}$	$\frac{.393}{9.98}$	$\frac{.952}{24.18}$	10, 14, 56, 38	VERSAKRIMP	±	±
C-T-336-	$\frac{.282}{7.16}$	$\frac{.306}{7.77}$	$\frac{.741}{18.82}$	04, 06, 08		±	±
C-T-340-	$\frac{.592}{15.04}$	$\frac{.468}{11.89}$	$\frac{1.056}{26.82}$	10, 14, 56, 38, 209, 413		±	±
REFERENCE: SCALE: NTS DATE: 11-28-84 DRAWN BY: JJ CHKD. BY: GZ APPRD. BY:						DWG. NO. A CUSTOMER DWG.	

