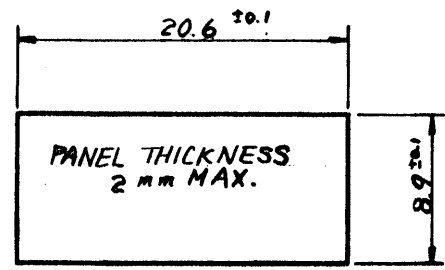
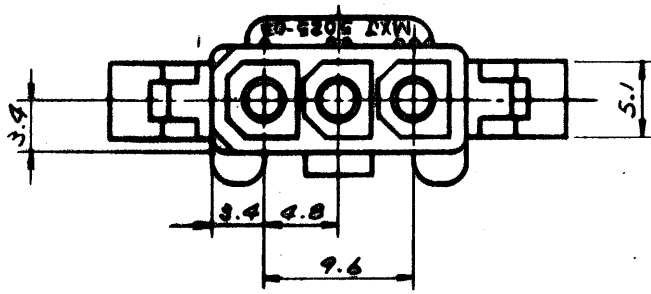


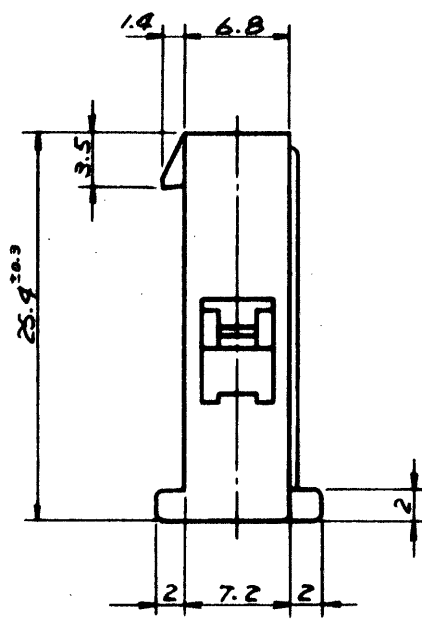
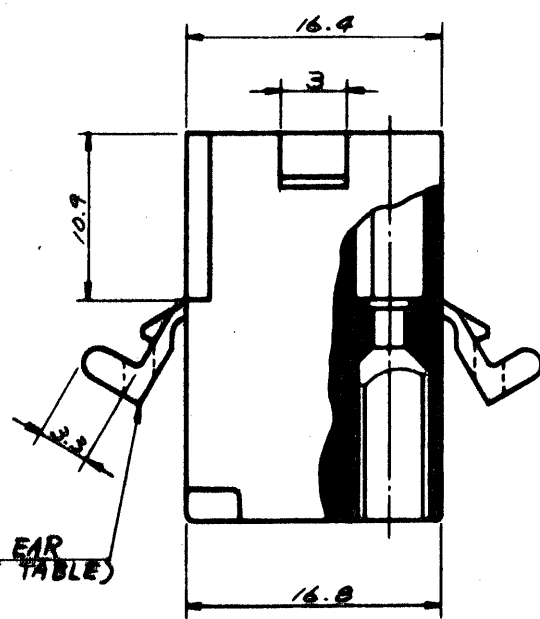
F



MOUNTING HOLE DETAIL

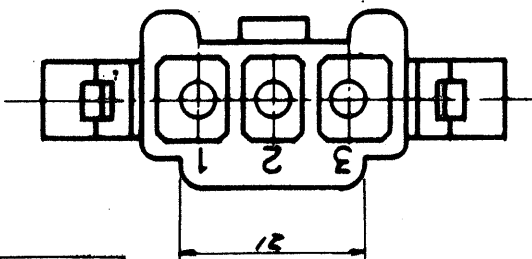
E

D



C

B



GENERAL TOLERANCES

10 UNDER	±0.2
10 OVER 30 UNDER	±0.25
30 OVER	±0.3
ANGLE	±3°

A

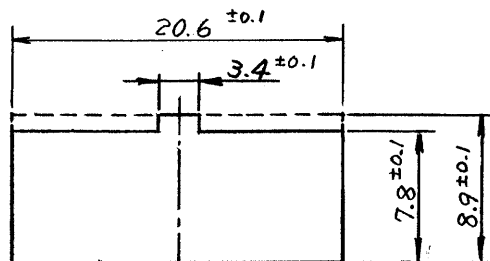
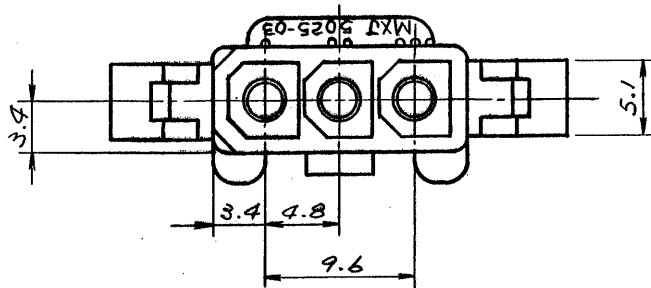
	5025-03P1	NO
	5025-03P	YES
EDP NO.	ENG. NO.	MTG. EAR

D	ADDED -03P1 ECN NO. 917	7/5/77		
C	REMOVED "X" ECN NO. 740	7/10/77		
B	リブ、ハブノズル、ボルト、ワッシャー	13/6/77		
A	REVISED	10/20/77		
0	PROPOSED	7/17/77		
記号	変更内容 (Rev.)	Date	Name	

公差 (Tolerances)	.000 → ±0.005 .00 → ±0.05 .0 → ±0.1 . → ±0.3
材料 (MAT'L)	NYLON66, 94V-2
熱処理 (H.T.)	HRC —
仕上げ (Finish)	—
Scale	2/1
名称 (Name)	MINI FIT CONN. 3POS. PLUG HSG.

所要数 (Req)	DRWG. Y. Amano 7/17 '77
	DSN'D M. ENDO MATO 7/16
	CHK'D M. Shiraishi
	APP'D
MOLEX-JAPAN CO., LTD. 日本モレックス株式会社	
No.	REV.
SD-5025-03P*	D

F

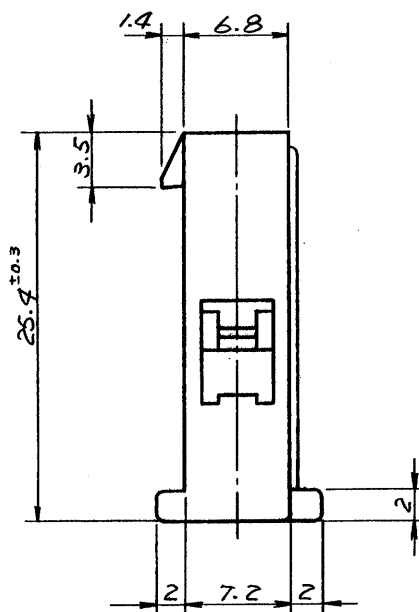
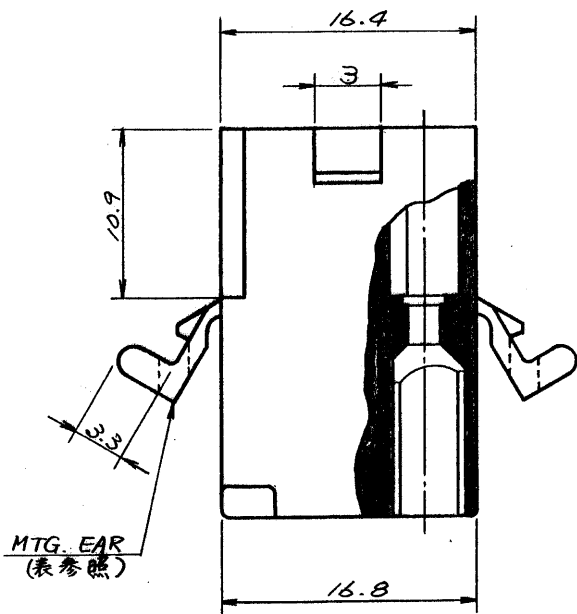


パネル板厚 2mm MAX

パネルスロット寸法

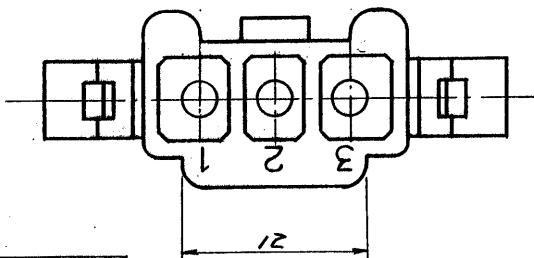
E

D



C

B



一般公差

10未満	±0.2
10以上30未満	±0.25
30以上	±0.3
角度	±3°

A

15-31-1033	5025-03P1	無
15-31-1031	5025-03P	有
EDP NO.	ENG. NO.	MTG. EAR

				公差 (Tolerances) .000 → ±0.005 .00 → ±0.05 .0 → ±0.1 . → ±0.3	所要数 (Req)	DRWG. <i>Y. Awano 9/27 '77</i>	
				材料 (MAT'L) NYLON66, 94V-2		DSN'D <i>M. ENO MTD 10/16</i>	
				熱処理 (H.T.) HRc — # —	molex MOLEX-JAPAN CO., LTD. 日本モレックス株式会社	CHK'D <i>W. Shiraishi</i>	
				仕上げ (Finish) — # —		APP'D <i>W. Shiraishi</i>	
E	REVISED	ECN NO. 1499	11/30/77	K.H.	No. SD-5025-03P*	REV. E	
D	ADDED	-03P1 ECN NO. 917	9/5/77				
C	REMOVED	"X" ECN NO. 748	3/18/77				
B		リブ, パネルスロット, マット NO.	12/16/77				
A	REVISED		10/20/77				
O	PROPOSED		9/27/77				
記号 (LTR)	変更内容 (Rev.)			Date	Name	Scale 2/1	名称 (Name) MINI. FIT CONN. 3POS. PLUG HSG.