

10

9

8

7

6

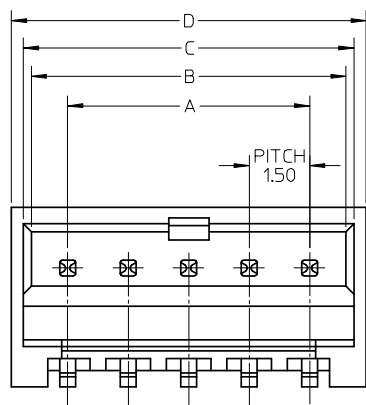
5

4

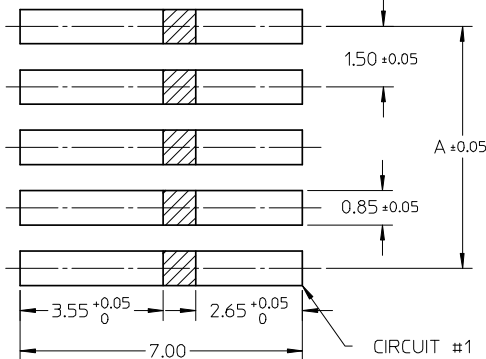
3

2

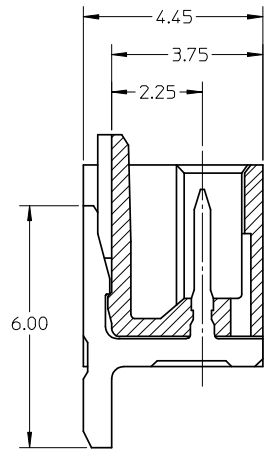
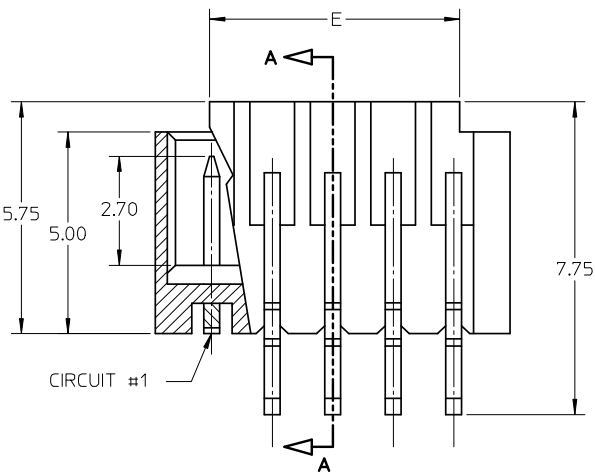
1



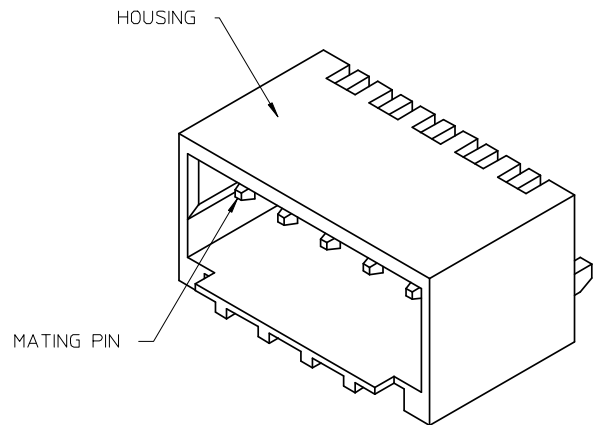
APPLICABLE PCB LAYOUT



CIRCUIT SIZE	HEADER IN TUBE PACKING	HEADER IN TAPE & REEL	A	B	C	D	E
2	87438-0237	87438-0238	1.50	3.30	3.70	4.30	1.70
3	87438-0337	87438-0338	3.00	4.80	5.20	5.80	3.20
4	87438-0437	87438-0438	4.50	6.30	6.70	7.30	4.70
5	87438-0537	87438-0538	6.00	7.80	8.20	8.80	6.20
6	87438-0637	87438-0638	7.50	9.30	9.70	10.30	7.70
7	87438-0737	87438-0738	9.00	10.80	11.20	11.80	9.20
8	87438-0837	87438-0838	10.50	12.30	12.70	13.30	10.70
9	87438-0937	87438-0938	12.00	13.80	14.20	14.80	12.20
10	87438-1037	87438-1038	13.50	15.30	15.70	16.30	13.70
11	87438-1137	87438-1138	15.00	16.80	17.20	17.80	15.20
12	87438-1237	87438-1238	16.50	18.30	18.70	19.30	16.70
13	87438-1337	87438-1338	18.00	19.80	20.20	20.80	18.20
14	87438-1437	87438-1438	19.50	21.30	21.70	22.30	19.70
15	87438-1537	87438-1538	21.00	22.80	23.20	23.80	21.20



SECTION A-A



- NOTES:
- MATERIAL:
HOUSING: GLASS-FILLED NYLON 46, UL RATED 94V-0, COLOR: BEIGE.
PINS: BRASS ALLOY, C26000
 - PLATING: 0.38µM MIN. GOLD OVER 1.27µM MIN. NICKEL.
 - DRAWING SHOWS PLUG WITH 5 CIRCUITS.
 - HEADER TO BE USED WITH CRIMP HOUSING, P/N 87439 AND CRIMP TERMINAL, P/N 87421.
 - PARTS TO BE PACKED IN MOISTURE BARRIER BAG.

ADD TUBE DETAILS EC NO: S2008-0476 DRWN:SKANG 2007/12/14 CHKD:ATSEE 2007/12/18 APPR:MLONG 2007/12/18	QUALITY SYMBOLS ▽=0 ◻=0	GENERAL TOLERANCES (UNLESS SPECIFIED) <table border="1"> <thead> <tr> <th></th> <th>mm</th> <th>INCH</th> </tr> </thead> <tbody> <tr><td>4 PLACES</td><td>± ---</td><td>± ---</td></tr> <tr><td>3 PLACES</td><td>± ---</td><td>± ---</td></tr> <tr><td>2 PLACES</td><td>± 0.2</td><td>± ---</td></tr> <tr><td>1 PLACE</td><td>± ---</td><td>± ---</td></tr> </tbody> </table>		mm	INCH	4 PLACES	± ---	± ---	3 PLACES	± ---	± ---	2 PLACES	± 0.2	± ---	1 PLACE	± ---	± ---	DIMENSION STYLE MM ONLY DRAWN BY: KCLING DATE: 1994/11/18 CHECKED BY: SKTOH DATE: 1994/12/09 APPROVED BY: RWONG DATE: 1994/12/09	SCALE NTS DESIGN UNITS METRIC THIRD ANGLE PROJECTION	TITLE 1.50MM PITCH, W-T-B HEADER, R/A, SMT
		mm	INCH																	
	4 PLACES	± ---	± ---																	
	3 PLACES	± ---	± ---																	
2 PLACES	± 0.2	± ---																		
1 PLACE	± ---	± ---																		
DRAFT WHERE APPLICABLE MUST REMAIN WITHIN DIMENSIONS	SIZE A3	MATERIAL NO. SEE TABLE	DOCUMENT NO. MOLEX INCORPORATED SD-87438-**36	SHEET NO. 1 OF 2																
THIS DRAWING CONTAINS INFORMATION THAT IS PROPRIETARY TO MOLEX INCORPORATED AND SHOULD NOT BE USED WITHOUT WRITTEN PERMISSION																				

9

8

7

6

5

4

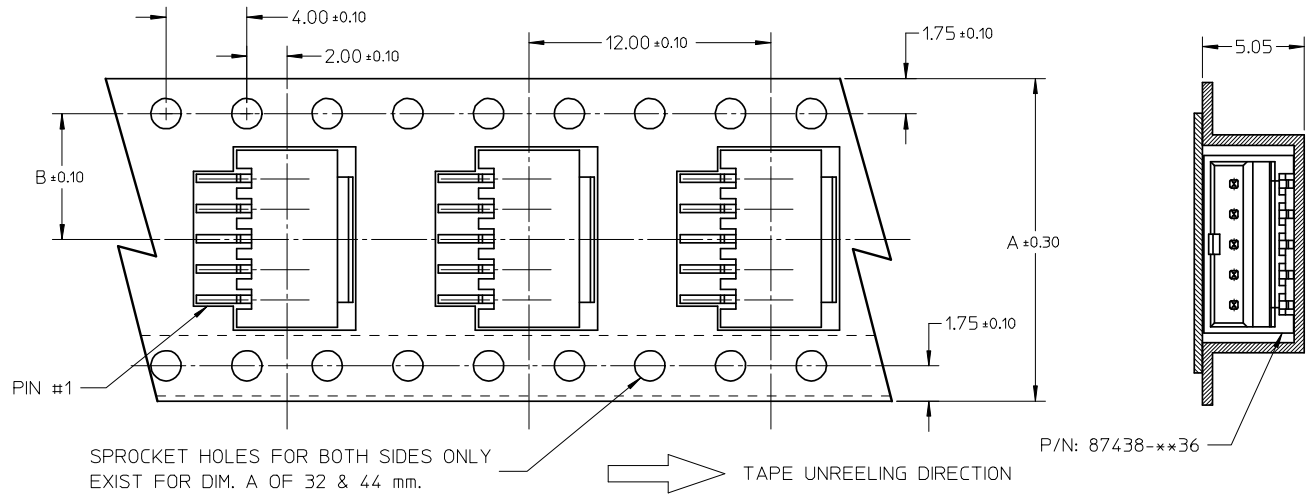
3

2

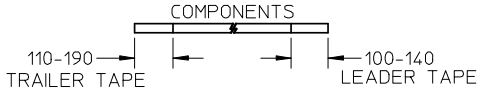
1

10	9	8	7	6	5	4	3	2	1
15	44	20.20	100	44.40	50.40				
11, 12, 13, 14	32	14.20	100	32.40	38.40				
7, 8, 9, 10	24	11.50	100	24.40	30.40				
2, 3, 4, 5, 6	16	7.50	100	16.40	22.40				
CIRCUIT SIZE	A	B	N	G	T MAX				

EMBOSSED CARRIER TAPE PACKING DETAILS



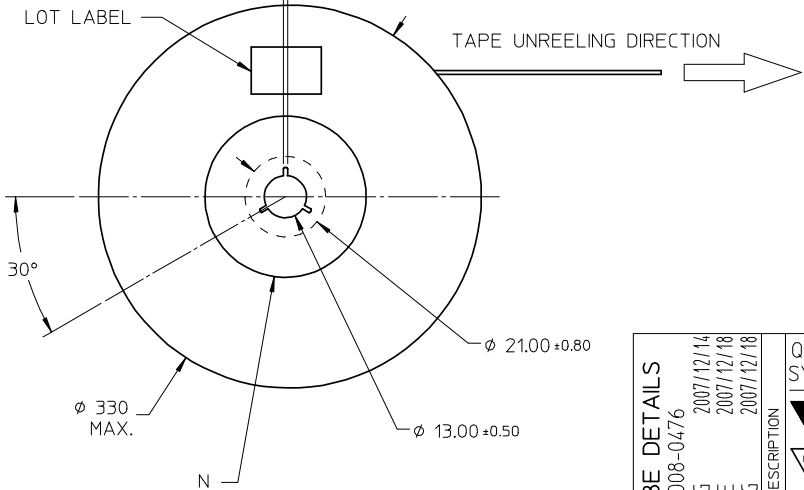
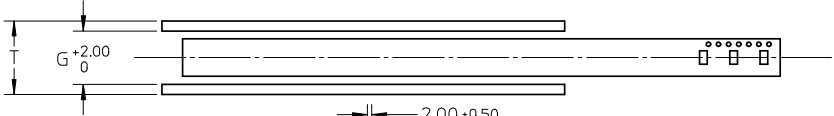
- NOTES:
1. LEADER AND TRAILER TAPE:



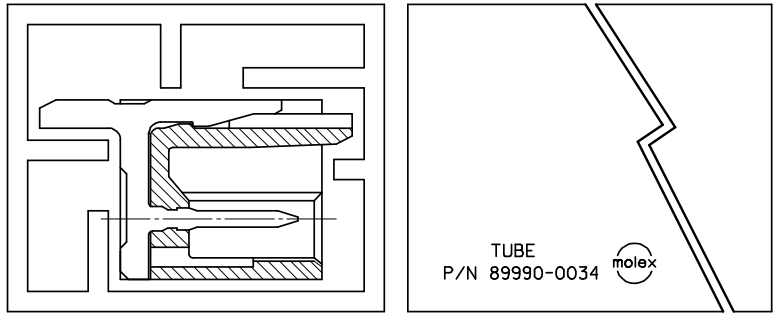
2. PACKING QUANTITY IS 1000 PIECES/REEL.
3. THE TAPE IS TREATED FOR ANTI-ESD.
4. PEELING OFF FORCE OF TOP TAPE IS 60 gf MAX. AND PEELING DIRECTION & ANGLE IS AS SHOWN.



REEL DETAILS



PART LOADING INTO TUBE DETAILS



ADD TUBE DETAILS EC NO: S2008-0476 DRWN:SKANG 2007/12/14 CHKD:ATSEE 2007/12/18 APPR:MLONG 2007/12/18	QUALITY SYMBOLS ▽=0 ◻=0	GENERAL TOLERANCES (UNLESS SPECIFIED) <table border="1"> <tr> <td></td> <td>mm</td> <td>INCH</td> </tr> <tr> <td>4 PLACES</td> <td>± ---</td> <td>± ---</td> </tr> <tr> <td>3 PLACES</td> <td>± ---</td> <td>± ---</td> </tr> <tr> <td>2 PLACES</td> <td>± 0.2</td> <td>± ---</td> </tr> <tr> <td>1 PLACE</td> <td>± ---</td> <td>± ---</td> </tr> </table>		mm	INCH	4 PLACES	± ---	± ---	3 PLACES	± ---	± ---	2 PLACES	± 0.2	± ---	1 PLACE	± ---	± ---	DIMENSION STYLE MM ONLY DRAWN BY: KCL ING DATE: 1994/11/18 CHECKED BY: SKTOH DATE: 1994/12/09 APPROVED BY: RWONG DATE: 1994/12/09	SCALE NTS TITLE 1.50MM PITCH, W-T-B HEADER, R/A, SMT	DESIGN UNITS METRIC MOLEX INCORPORATED	THIRD ANGLE PROJECTION
		mm	INCH																		
	4 PLACES	± ---	± ---																		
	3 PLACES	± ---	± ---																		
2 PLACES	± 0.2	± ---																			
1 PLACE	± ---	± ---																			
DRAFT WHERE APPLICABLE MUST REMAIN WITHIN DIMENSIONS	MATERIAL NO. SEE TABLE	DOCUMENT NO. SD-87438-***36	SHEET NO. 2 OF 2																		
SIZE A3	THIS DRAWING CONTAINS INFORMATION THAT IS PROPRIETARY TO MOLEX INCORPORATED AND SHOULD NOT BE USED WITHOUT WRITTEN PERMISSION																				