

SMD Power Inductor CDH5D16/S



Halogen Free



Description

- Ferrite drum core construction.
- Magnetically unshielded.
- L × W × H: 6.0 × 6.0 × 1.7 mm Max.
- Product weight: 0.2g(Ref.)
- Moisture Sensitivity Level: 1
- RoHS compliance.
- Halogen Free available.

Environmental Data

- Operating temperature range: -40°C ~ +105°C (including coil's self temperature rise)
- Storage temperature range: -40°C ~ +105°C
- Solder reflow temperature: 260 °C peak.

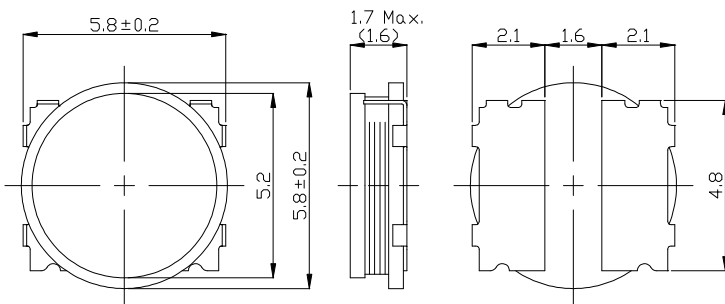
Packaging

- Carrier tape and reel packaging
- 13.0" diameter reel
- 3000pcs per reel

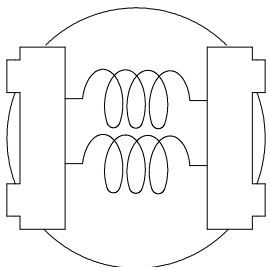
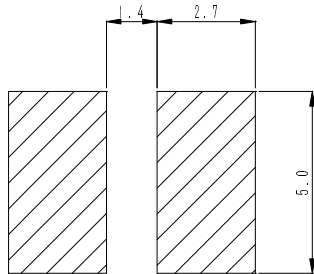
Applications

- Ideally used in PDA, DSC/DVC etc as DC-DC converter inductors .

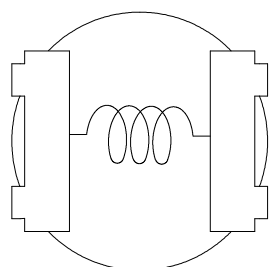
Dimension - [mm]



Land pattern and Schematics - [mm]



(1.1 μ H ~ 3.1 μ H)



(4.7 μ H ~ 33 μ H)

SMD Power Inductor CDH5D16/S



Electrical Characteristics

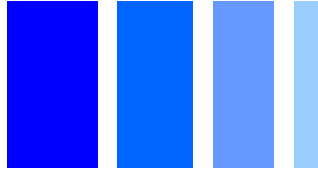
Part No.	Stamp	Inductance (μ H) [Within] ※1	D.C.R. (m Ω) [Within] (at 20°C)	Saturation Current (A)※2 (at20°C)	Temperature rise current (A) ※3
CDH5D16SHF-1R1MC	1R1	1.1 \pm 20%	23 \pm 20%	4.72	4.05
CDH5D16SHF-1R5MC	1R5	1.5 \pm 20%	28 \pm 20%	4.08	3.70
CDH5D16SHF-2R5MC	2R5	2.5 \pm 20%	40 \pm 20%	3.26	3.10
CDH5D16SHF-3R1MC	3R1	3.1 \pm 20%	46 \pm 20%	2.96	2.90
CDH5D16SHF-4R7MC	4R7	4.7 \pm 20%	69 \pm 20%	2.40	2.32
CDH5D16SHF-6R8MC	6R8	6.8 \pm 20%	97 \pm 20%	2.00	1.90
CDH5D16SHF-100MC	100	10 \pm 20%	120 \pm 20%	1.65	1.68
CDH5D16SHF-150MC	150	15 \pm 20%	205 \pm 20%	1.34	1.24
CDH5D16SHF-220MC	220	22 \pm 20%	311 \pm 20%	1.10	1.03
CDH5D16SHF-330MC	330	33 \pm 20%	465 \pm 20%	0.90	0.84

※1. Inductance measuring condition: at 100kHz.

※2. Saturation current: The value of D.C. current when the inductance decreases to 70% of it's nominal value.

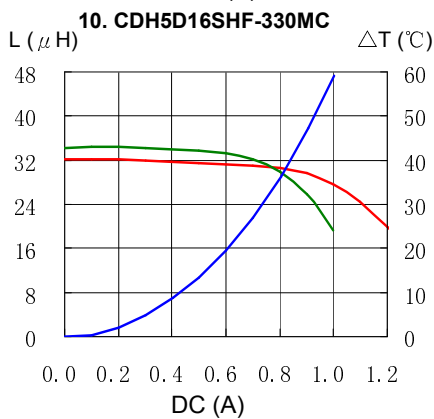
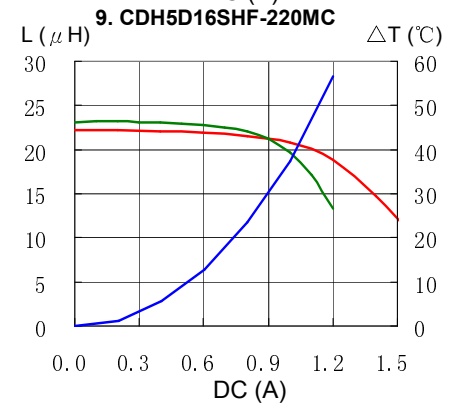
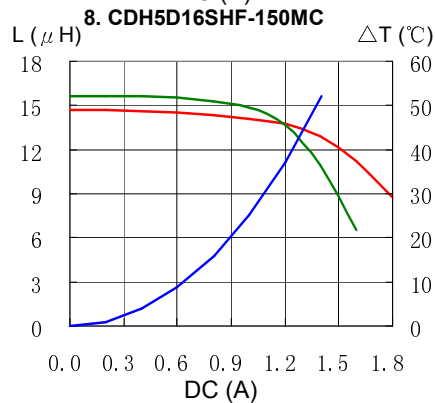
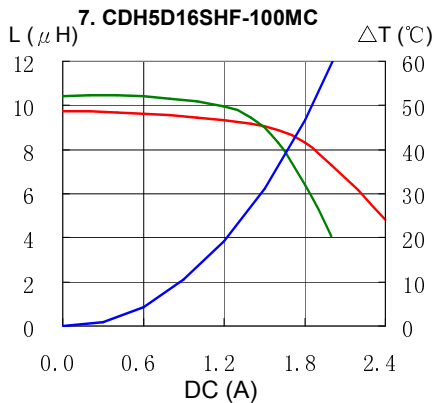
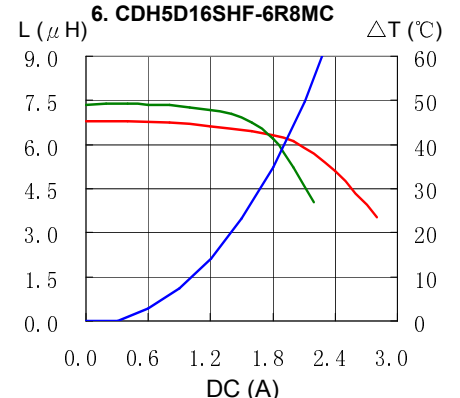
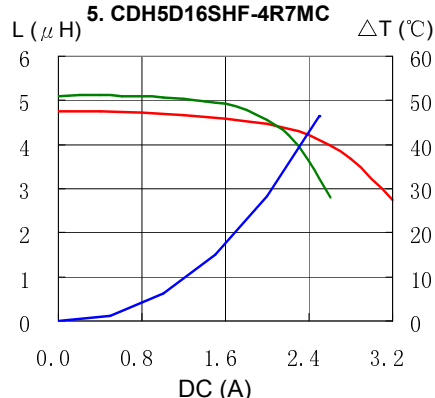
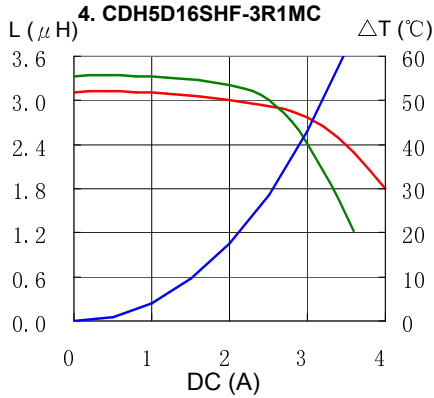
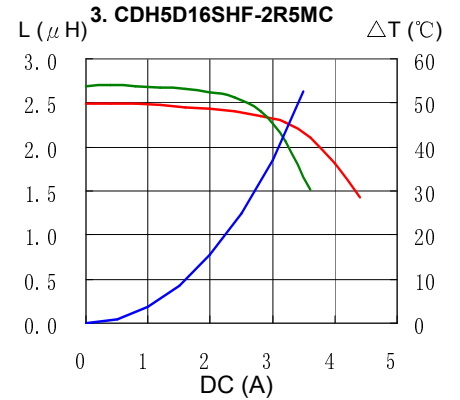
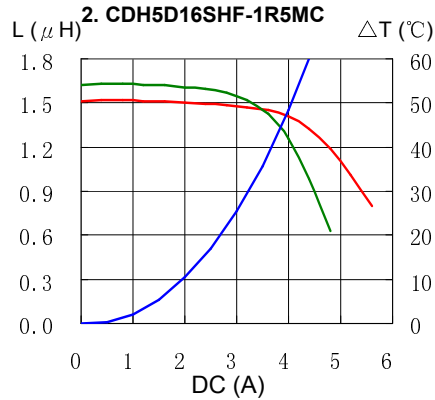
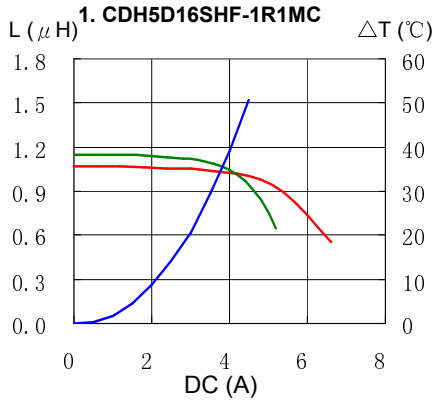
※3. Temperature rise current: The value of D.C. current when the temperature rise is $\Delta t=40^{\circ}\text{C}$ ($T_a=20^{\circ}\text{C}$).

SMD Power Inductor CDH5D16/S



Saturation Current & Temperature Rise Graph

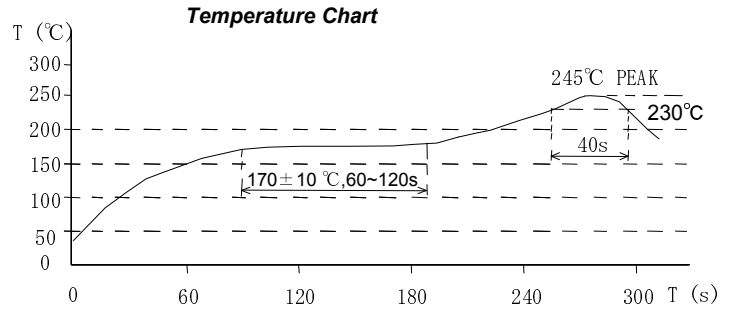
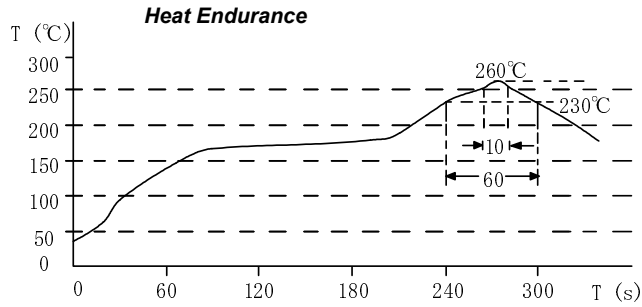
— L (20°C) — L (105°C) — ΔT



SMD Power Inductor CDH5D16/S



Solder Reflow Condition



Please refer to the sales offices on our website - <http://www.sumida.com>

Hong Kong

Tel.+852-2880-6781
FAX.+852-2565-9600
sales@hk.sumida.com

Saitama(Japan)

Tel.+81-48-691-7300
FAX.+81-48-691-7340
sales@jp.sumida.com

Chicago

Tel.+1-847-545-6700
FAX. +1-847-545-6720
sales@us.sumida.com

Shanghai

Tel.+86-21-5836-3299
FAX.+86-21-5836-3266
shanghai.sales@cn.sumida.com

Seoul

Tel.+82-2-6237-0777
FAX.+82-2-6237-0778
sales@kr.sumida.com

Oberzell

Tel.+49-8591-937-0
FAX. +49-8591-937-103
contact@eu.sumida.com

Shenzhen

Tel.+86-755-8291-0228
FAX.+86-755-8291-0338
shenzhen.sales@cn.sumida.com

Singapore

Tel.+65-6296-3388
FAX.+65-6841-4426
sales@sg.sumida.com

Neumarkt

Tel.+49-9181-4509-110
FAX. +49-9181-4509-310
infocomp@eu.sumida.com

Taipei

Tel.+886-2-8751-2737
FAX.+886-2-8751-2738
sales@tw.sumida.com

San Jose

Tel.+1-408-321-9660
FAX.+1-408-321-9308
sales@us.sumida.com