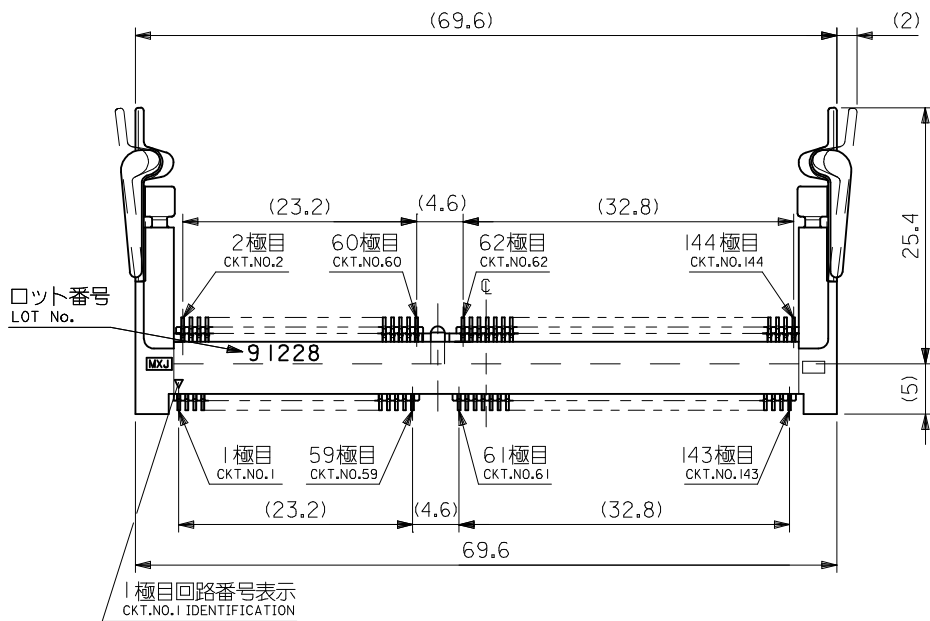


詳細 D  
DETAIL D  
(SCALE 5:1)

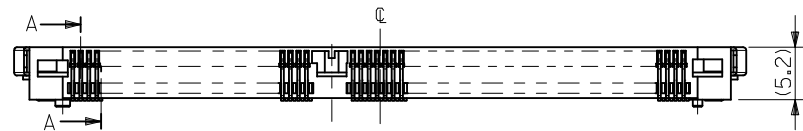
注記 NOTES  
1. 材料 MATERIAL  
ハウジング : ガラス入り耐熱樹脂、白色、UL94V-0  
HOUSING : G.F.HEAT RESISTANT PLASTIC, WHITE, UL94V-0  
ターミナル : 燐青銅  
TERMINAL : PHOSPHOR BRONZE  
ネイル : 黄銅  
NAIL : BRASS

2. めっき仕様 PLATING  
ロングターミナル LONG TERMINAL  
接点部 : 金めっき 0.25µmMIN.  
CONTACT AREA : GOLD 0.25 MICROMETER MINIMUM.  
半田付け部 : 錫めっき 1.0µmMIN.  
SOLDER TAIL AREA : TIN 1.0 MICROMETER MINIMUM.  
下地めっき : ニッケルめっき 2.0µmMIN.  
UNDER-PLATING : NICKEL 2.0 MICROMETER MINIMUM.  
ショートターミナル SHORT TERMINAL  
接点部 : 金めっき 0.25µmMIN.  
CONTACT AREA : GOLD 0.25 MICROMETER MINIMUM.  
半田付け部 : 錫めっき 1.0µmMIN.  
SOLDER TAIL AREA : TIN 1.0 MICROMETER MINIMUM.  
下地めっき : ニッケルめっき 2.0µmMIN.  
UNDER-PLATING : NICKEL 2.0 MICROMETER MINIMUM.  
ネイル NAIL  
錫めっき : 1.0µmMIN.  
TIN : 1.0 MICROMETER MINIMUM.  
下地めっき : ニッケルめっき 1.0µmMIN.  
UNDER-PLATING : NICKEL 1.0 MICROMETER MINIMUM.

3. テール平坦度は、0.1 MAX. とする。  
TAIL COPLANARITY TO BE 0.1 MAX.  
ネイル平坦度は、0.1 MAX. とする。  
NAIL COPLANARITY TO BE 0.1 MAX.  
4. 本製品は54698-144\*の鉛フリー品である。  
THIS PRODUCT IS LEAD FREE OF 54698-144\*.

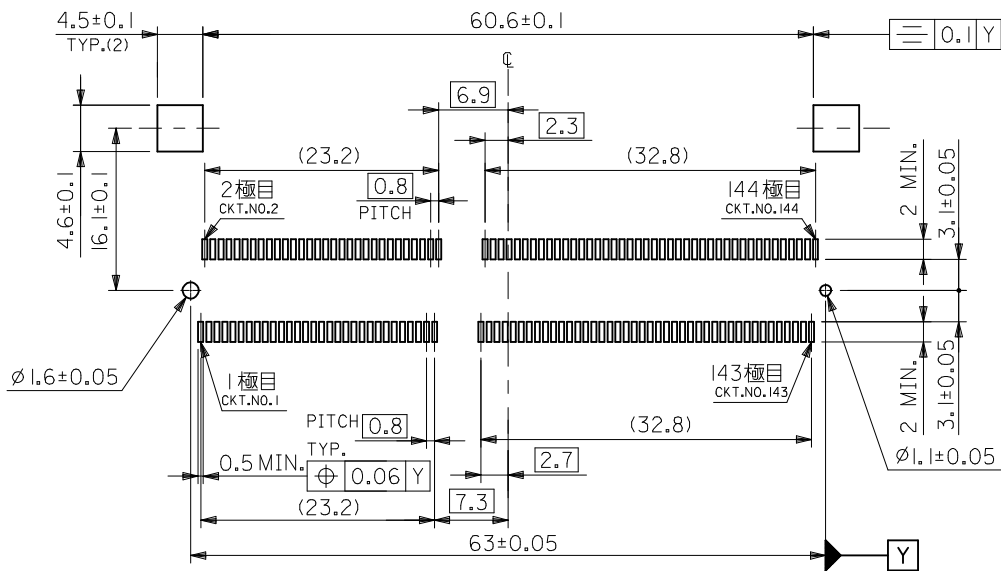


1 極目回路番号表示  
CKT.NO.1 IDENTIFICATION

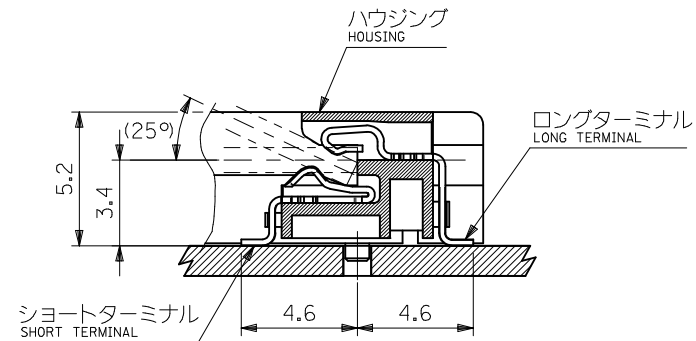


1.75	2.85	1.35	3.25	4.05	***V	ハードトレイ (高さ9)	54698-7008	54698-700*	
						ハードトレイ (高さ11)	54698-7005		
						標準トレイ	54698-7002		
3.25	1.35	2.85	1.75	5.55	5.0V	ハードトレイ (高さ9)	54698-7007		
						ハードトレイ (高さ11)	54698-7004		
						標準トレイ	54698-7001		
2.5	2.1	2.1	2.5	4.8	3.3V	ハードトレイ (高さ11)	54698-7003		
						標準トレイ	54698-7000		
						パッケージ	MATERIAL NO.		MODEL NO.

REVISED EC NO. J2013-0247 DRWN:Y0010 CHKD:MTOMITA APPR:Y0110	DESCRIPTION 2012/08/28 2012/08/28 2012/08/28	GENERAL TOLERANCES (UNLESS SPECIFIED)		DIMENSION STYLE MM ONLY		SCALE 2:1	DESIGN UNITS METRIC	THIRD ANGLE PROJECTION	
		10 UNDER	±0.2	DRAWN BY MNAGATA	DATE 2004/05/14	TITLE 0.8MM PITCH S.O.DIMM SOCKET 144CKT,H=5.2 -LEAD FREE-			
		10 OVER 30 UNDER	±0.25	CHECKED BY KTOJO	DATE 2004/05/14				
		30 OVER	±0.3	APPROVED BY MSASAO	DATE 2004/05/14				
		ANGULAR ±3 °		DRAFT WHERE APPLICABLE MUST REMAIN WITHIN DIMENSIONS		MATERIAL NO. SEE CHART	DOCUMENT NO. SD-54698-004	SHEET NO. 1 OF 3	

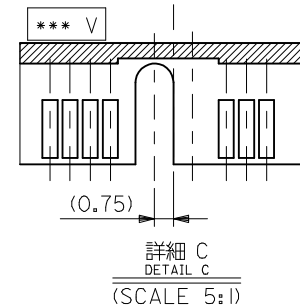
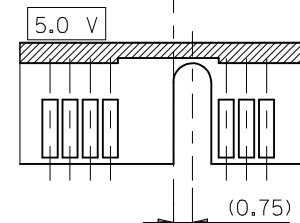
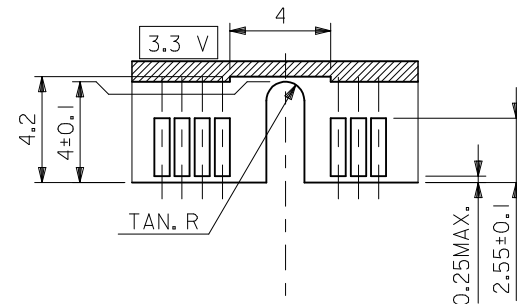
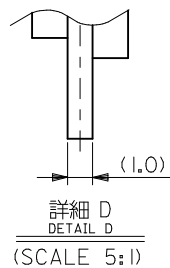
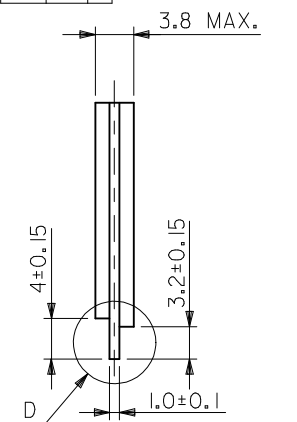
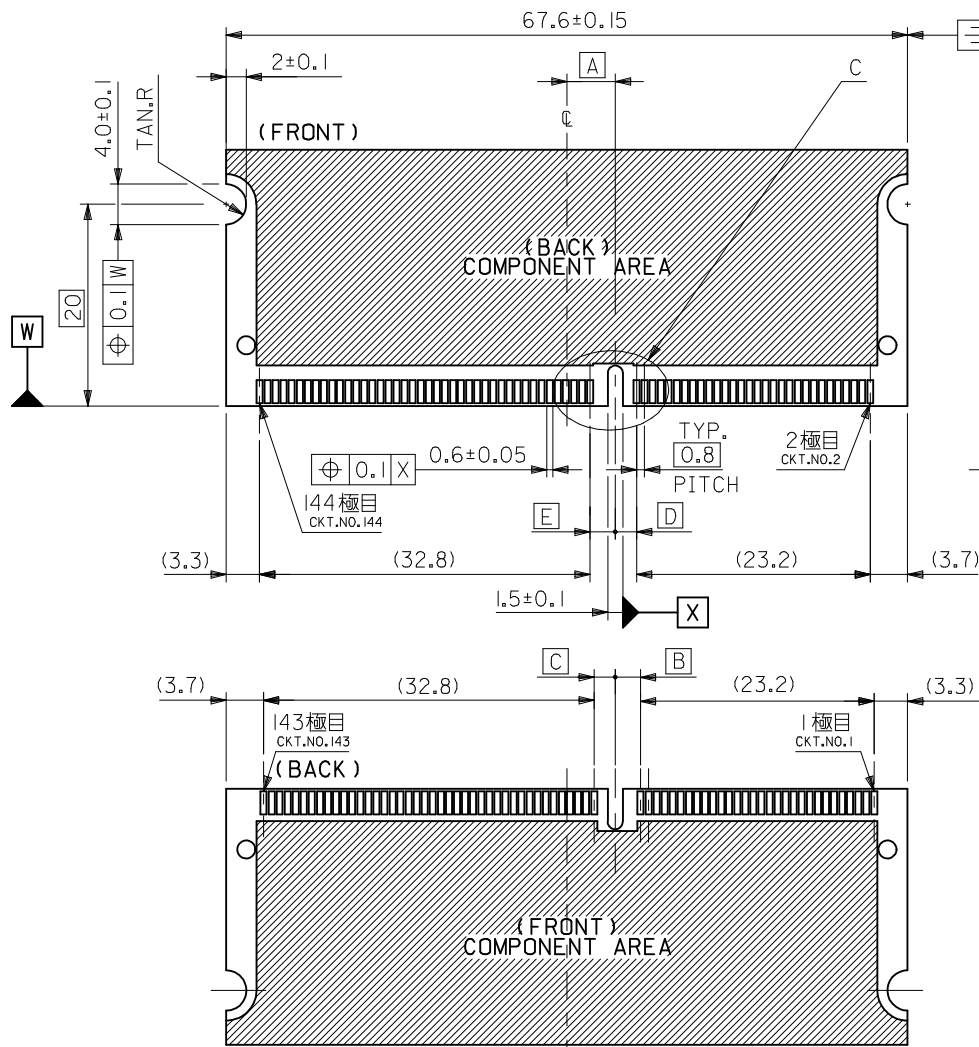


推奨基板寸法  
RECOMMENDED PCB PATTERN LAYOUT  
(THK: 1.2 ± 0.1)



断面 A-A  
SECTION A-A  
(SCALE 5:1)

REVISED EC NO: J2013-0247 DRWN: YGOTO CHKD: M TOMITA APPR: Y ITO 2012/08/28 2012/08/28 2012/08/28	DESCRIPTION 10 UNDER ±0.2 10 OVER 30 UNDER ±0.25 30 OVER ±0.3 ANGULAR ±3 ° DRAFT WHERE APPLICABLE MUST REMAIN WITHIN DIMENSIONS	GENERAL TOLERANCES (UNLESS SPECIFIED)		DIMENSION STYLE MM ONLY		SCALE 2:1	DESIGN UNITS METRIC	THIRD ANGLE PROJECTION		
		DRAWN BY MNAGATA		DATE 2004/05/14		TITLE 0.8MM PITCH S.O.DIMM SOCKET 144CKT,H=5.2 -LEAD FREE-				
		CHECKED BY KTOJO		DATE 2004/05/14		APPROVED BY MSASAO				
		APPROVED BY MSASAO		DATE 2004/05/14		MATERIAL NO. SEE CHART		DOCUMENT NO. SD-54698-004		SHEET NO. 2 OF 3
SIZE A3		THIS DRAWING CONTAINS INFORMATION THAT IS PROPRIETARY TO MOLEX INCORPORATED AND SHOULD NOT BE USED WITHOUT WRITTEN PERMISSION								



推奨基板寸法  
RECOMMENDED MATING BOARD CONFIGURATION  
(THK: 1.0±0.1)

REVISED EC NO: J2013-0247 DRWN: YG010 CHKD: M TOMITA APPR: Y0110 2012/08/28 2012/08/28 2012/08/28	DESCRIPTION REV	GENERAL TOLERANCES (UNLESS SPECIFIED)		DIMENSION STYLE MM ONLY	SCALE 2:1	DESIGN UNITS METRIC	THIRD ANGLE PROJECTION	
		10 UNDER	±0.2	DRAWN BY MNAGATA	DATE 2004/05/14	TITLE 0.8MM PITCH S.O.DIMM SOCKET 144CKT:H=5.2 -LEAD FREE-		
		10 OVER 30 UNDER	±0.25	CHECKED BY KTOJO	DATE 2004/05/14			
		30 OVER	±0.3	APPROVED BY MSASAO	DATE 2004/05/14			
ANGULAR ±3 °		DRAFT WHERE APPLICABLE MUST REMAIN WITHIN DIMENSIONS		MATERIAL NO. SEE CHART	DOCUMENT NO. SD-54698-004	SHEET NO. 3 OF 3		
				SIZE A3	THIS DRAWING CONTAINS INFORMATION THAT IS PROPRIETARY TO MOLEX INCORPORATED AND SHOULD NOT BE USED WITHOUT WRITTEN PERMISSION			