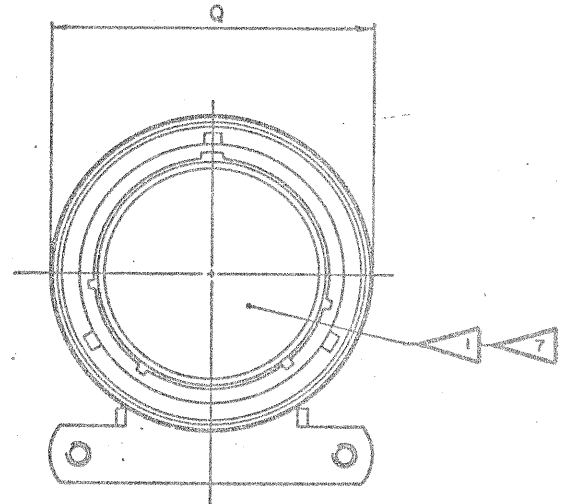
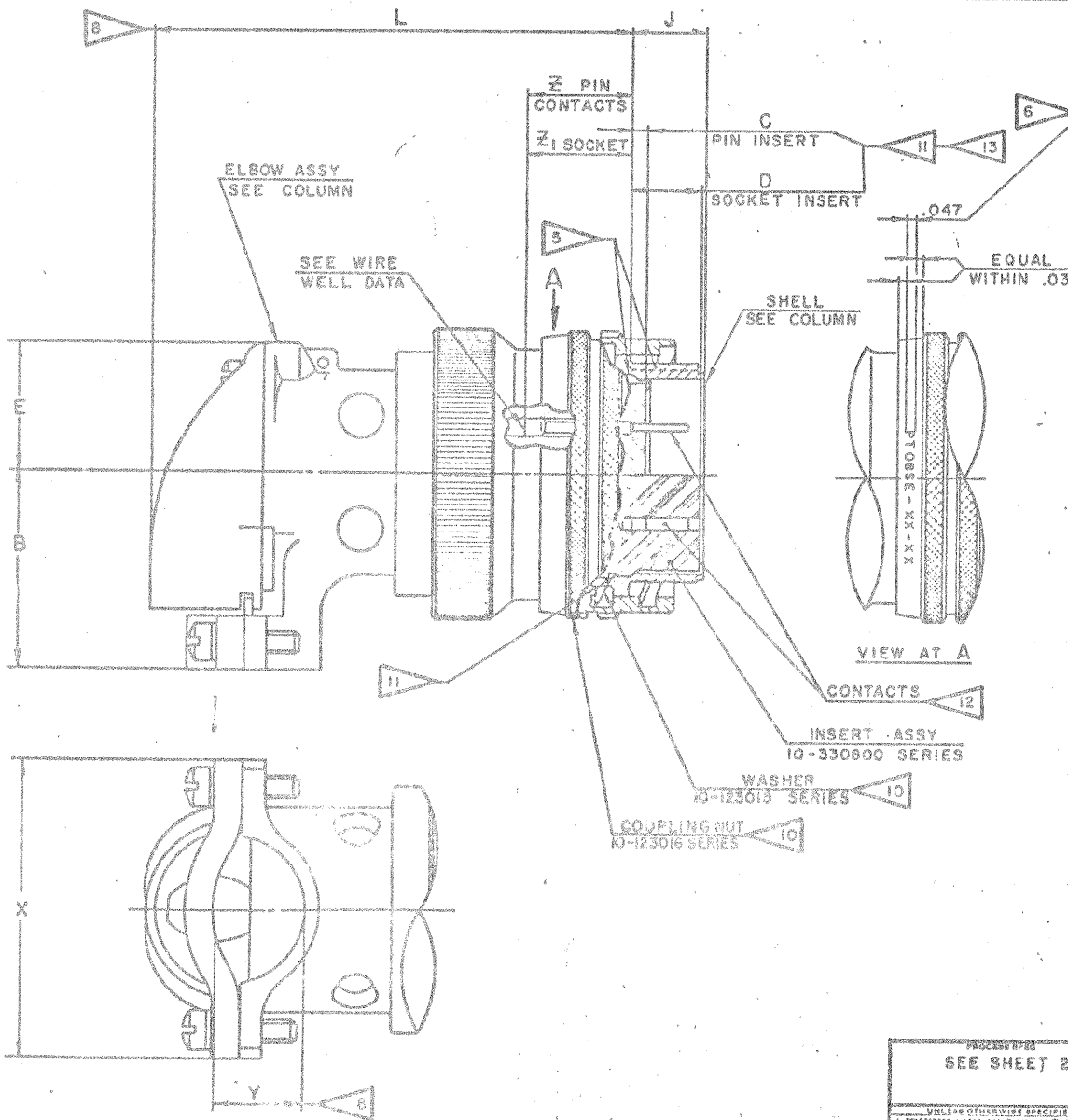


36908-358
 (NOT PART OF STANDARD ASSEMBLY)

SEE DRAWING
 10-180000

CHG NO.	BYM	DESCRIPTION	DATE	APPROVA
37783	-3	1 REDRAWN BY E. MICHEL; WAS SAME SIZE 9-3836-1 (ASSY SPEC); ADD - 24 & DATA, NOTE 15.	9-28-60	<i>Michel</i>
375E3	-669	2 REV COL O, & L	6-2-61	<i>Fisher</i>
38811-7	3	REV NOTE 12	8-18-61	<i>Fisher</i>
38689-2	4	REV COL L, WAS 10-184997-203,223-243 (ELBOW ASSY COL)	8-23-61	<i>Fisher</i>
38999-1	5	WAS 10-123016-105 (COUPLING NUT)	8-22-61	<i>Fisher</i>
39070-8	6	WAS COUPLING SEE COL. 3284, 010-.025 PIN INSERT, 016, 010-.025 SOCKET INSERT; REM COUPLING NUT COL; ADD X & Y COL & DATA; REV B RELOC C & D DIM	1-4-62	<i>Michel</i>
43523	A1	STD PRACTICE	8-23-62	<i>Fisher</i>
38689-2	A2	REV C COL	12-27-62	<i>Fisher</i>



ENGINEERING

DEC 6 1960

71-331806 THRU

USE OF THIS DOCUMENT IS UNLIMITED IN DOMESTIC COUNTRIES PROVIDED PROPER CREDIT IS GIVEN TO THE ORIGINAL SOURCE.

SEE SHEET 2.
 NOTES

ITEM REQD	PART NO.	DESCRIPTION	UNIT WT	NEXT ASSY	USED ON APPLICATION
LIST OF MATERIAL					
CONNECTOR, ELECTRICAL PLUG, TYPE PT-SE (1 MC, 80°, OLIVE DRAB)					
SCINTILLA DIVISION BENDIX AVIATION CORPORATION BIRNEY, N.Y., U.S.A.					
71-331806 THRU 71-331850					
C (SHEET 1 OF 1)					

TAB. CODE 71829

ASSEMBLY NUMBER	PT-SE NUMBER	SHELL	DIMENSIONS													
			ELBOW ASSEMBLY	C	D	B	Y	X	E	L	O DIA	R	E ₁			
71-331806-	08 SE-6-		NOT AVAILABLE													
71-331808-	-8-		NOT AVAILABLE													
71-331810-	-10-	10-330908-103	10-184997-103	.030	.337	.749	.170	1.191	.393	.353	1.727	.844	.640	.979		
71-331812-	-12-	-123	-123			.812	.264	1.191	.490		1.812	1.010				
71-331814-	-14-	-143	-143			.905	.310	1.254	.519		1.960	1.141				
71-331816-	-16-	-163	-163			1.030	.330	1.316	.583		2.162	1.266				
71-331818-	-18-	-183	-183			1.015	.444	1.562	.621		2.270	1.375				
71-331820-	-20-	-203	10-184964-203	.092	.399	1.077	.510	1.623	.683	.415	2.280	1.516	.578	.317		
71-331822-	-22-	-223	-223			1.139	.515	1.719	.739		2.327	1.641				
71-331824-	-24-	-243	-243			1.250	.656	1.750	.787		2.565	1.779				
71-331825/50				NOT AVAILABLE												

36808-358		REVISIONS		DATE	APPROVAL
CHG NO.	SYM	DESCRIPTION			
37745-3	1	SEE SHEET 1		10-5-60	<i>[Signature]</i>
37745-4	2	SEE SHEET 1		8-2-61	HISCOTT
39911-7	3	SEE SHEET 1		8-16-61	<i>[Signature]</i>
39911-8	4	SEE SHEET 1		8-22-61	<i>[Signature]</i>
39911-9	5	SEE SHEET 1		8-12-61	HISCOTT
39911-10	6	SEE SHEET 1		1-4-62	<i>[Signature]</i>

A1 SEE SHEET 1 FOR ALL CHANGES
A2



8. DIMENSIONS INDICATE FINAL INSTALLATION, FOR STORAGE AND SHIPPING, SHELL AND ELBOW ASSEMBLY MUST BE LOOSLY COUPLED.
7. INSERT ASSEMBLIES ARE NOT REMOVABLE.
6. SEE WORK ORDER FOR PERMISSIBLE ADDITIONAL OR ALTERNATE STAMPING.
5. VERTICAL CENTERLINES OF INSERT ARRANGEMENT AND SHELL POLARIZING KEY MUST BE WITHIN .005 OF INDICATED ROTATION PER 9-2437-1.
4. FOR COMPONENT PART NUMBERS OF DESIRED ARRANGEMENT, SEE APPLICABLE PARTS LIST (PL)
3. TO COMPLETE ASSEMBLY NO. & PT NO., ADD APPLICABLE INSERT ARRANGEMENT SUFFIX TO BASE NUMBERS LISTED ABOVE PER 9-2437-1.
2. MATES WITH RECEPTACLE 71-331006 THRU 71-331030 AND OTHERS.
1. FOR CONTACT ARRANGEMENTS, SEE DRAWINGS L-15206-() THRU L-15250-().
15. UNITS ILLUSTRATED MEET THE MATERIAL AND FINISH REQUIREMENTS OF MIL-C-26482.
14. FOR FINAL INSTALLATION, CONTACTS MUST BE ASSEMBLED INTO ALL INSERT HOLES. ALL UNUSED GROMMET HOLES MUST BE FILLED WITH APPROPRIATE SEALING PLUG 10-101033.
13. INSERT LOCATING DIMENSIONS APPLY BEFORE ASSEMBLY OF CONTACTS.
12. PLACE CONTACTS IN AN APPLICABLE POLYETHYLENE BAG 10-215999 SERIES (SEE PARTS LIST) & INCLUDE IN POLYETHYLENE BAG CONTAINING CONNECTOR.
11. DIMENSIONS MUST BE MAINTAINED WHEN INSERTS ARE PRESSED FIRMLY AGAINST INDICATED SHOULDER.
10. COUPLING SLOTS AND WASHER TO BE LUBRICATED PER 9-3502.
9. ALL LOCKWIRE HOLES ARE .044 DIA MIN.

NOTES:

WIRE WELL DATA				
CONTACT SIZE	20	16		
CONDUCTOR WELL DIA	.048 ^{+0.002} / _{-0.000}	.066 ^{+0.002} / _{-0.000}		
CONDUCTOR WELL DEPTH	.184 ^{+0.037} / _{-0.000}	.234 ^{+0.031} / _{-0.000}		
INSULATION WELL DIA	.091 ^{+0.002} / _{-0.000}	NOT AVAILABLE		
INSULATION WELL DIA	.077 ^{+0.006} / _{-0.000}	NOT AVAILABLE		

ITEM	REQD	PART NO.	DESCRIPTION	UNIT WT	NEXT ASSY	USED ON
LIST OF MATERIAL						
CONNECTOR, ELECTRICAL PLUG, TYPE PT-SE () MC.90°, OLIVE DRAB						

APPLICATION	
71-331806 THRU 71-331850	C SHEET 2 OF 2

PACKET INFO	
TEST 9-4039-1	ASSY 9-3836-2, 9-2437-1
9-3502, 9-2811	

APPROVALS & SYMBOLS	
DESIGNED BY	DATE
CHECKED BY	DATE
DRAWN BY	DATE
DATE	DATE

71-331806 THRU 71-331850



71-331806 THRU 71-331850
C SHEET 2 OF 2
TAB. CODE 77820