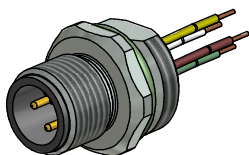


**Contact assignment:**

- 1 ■ brown
- 2 ■ white
- 3 ■ green
- 4 ■ yellow



**Technical specification:**

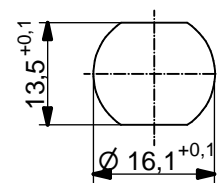
Rated voltage: IEC 61076-2-101	250 V
Current rating: IEC 61076-2-101	4 A at 40°C
Insulation resistance: IEC 60512	≥100 MΩ
Pollution degree: IEC 60664-1	3/2
Degree of protection: IEC 60529	IP 67, in mated condition
Temperature range:	-30°C ... +80°C
Mating cycles: IEC 60512-9a	≥100

**Materials:**

Contact:	CuZn
Contact plating:	Nickel, gold plated
Contact carrier:	PBT GF, UL 94
Sealing:	FPM
Socket housing:	CuZn, nickel plated
Grouting:	Polyurethane-resin, UL 94

**Installation specification:**

Recommended torque:	1-1,2 Nm
Conec installation tool:	Torque wrench: 36-000200 Insert across flats 17: 36-000230



Minimum wall thickness 1,5mm,  
alternativ panel cut-out d=16,1

Part no:	Description:	Pos	Length L:	Wire:
43-01704	SAL - CN - 12 - FS4.41 - 0,5	4	0,5m	AWG 24 PVC, UL
43-xxxxx	SAL - CN - 12 - FS4.41 - ...	4	x	

DO NOT ALTER CAD DRAWING BY HAND Directive 2002/95/EC RoHS compliant	Index: b 19.02.13 MG Ä4631 Data sheet revised, technical specification changed	dim. in mm		title: <b>Male socket M12x1 with wire, frontmounting, CAN-Bus</b>	
		date	name		
	tolerance of wire: L ≤ 0,5m: L + 20mm L > 0,5m: L + 4%	drawn	02.11.10	Franz	dwg no: <b>43K1A1226</b>
	general tolerance: 0 ± 0,50mm 0,0 ± 0,25mm 0,00 ± 0,10mm	appd.	02.11.10	Mankopf	
THIS DRAWING MAY NOT BE COPIED OR REPRODUCED IN ANY WAY, AND MAY NOT BE PASSED ON TO A THIRD PARTY WITHOUT WRITTEN PERMISSION. OWNERSHIP AND COPYRIGHT OF CONEC GmbH				part no: see table	