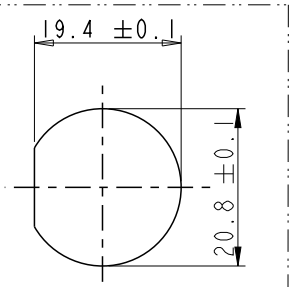
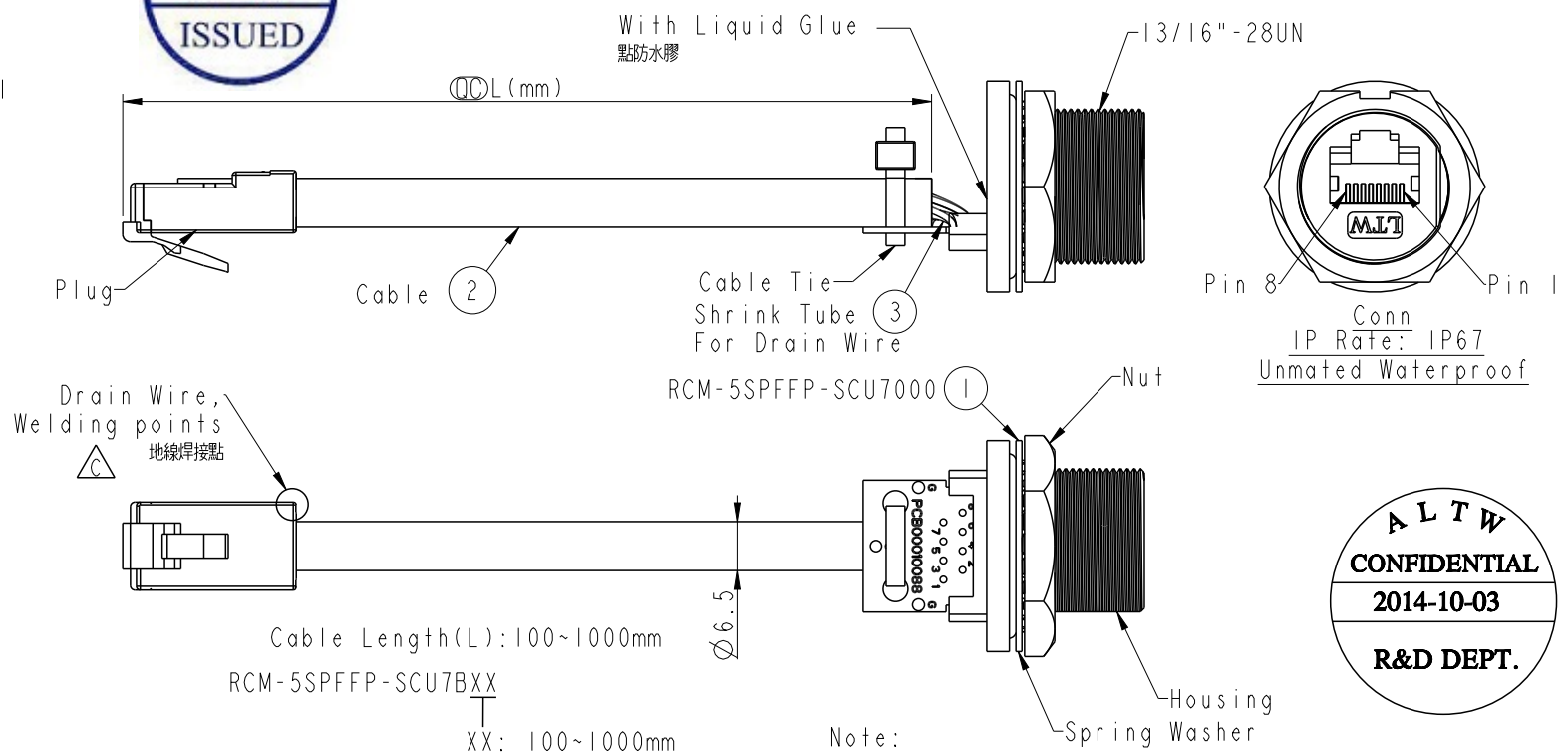


THIS DOCUMENT IS SUBJECT TO CHANGE WITHOUT NOTICE. IT IS CONFIDENTIAL AND A PROPERTY OF Amphenol LTW. DISCLOSURE TO THIRD PARTY HAS TO BE AUTHORIZED BY Amphenol LTW.

REV.	ECN NO.	DATE	SIGN	DESCRIPTION
B	LEN1460068	2014/06/18	Tom	Change Panel Thickness
C	LE31490050	2014/09/03	Feng_Li	Delete Shrink Tube
D	LEN14A0070	2014/10/03	Lodess	Change the note of twisting wires



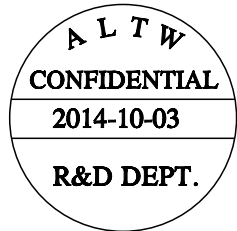
Cable Length(L): 100~1000mm

RCM-5SPFFP-SCU7BXX

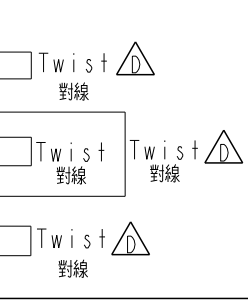
XX: 100~1000mm
10: 100mm
15: 150mm
20: 200mm
1
95: 950mm
A0: 1000mm

Cable length	Tolerance
0.0~100 mm	±10 mm
101~300 mm	±15 mm
301~1000 mm	±20 mm

- Note:
- \*  $\varnothing$  Important Dimension
  - \* Panel Nut: Zinc Alloy, Nickel Plated
  - \* Spring Washer: SUS304
  - \* O-Ring: Silicone, Gray\_Black
  - \* Housing: Zinc Alloy, Nickel Plated
  - \* Use with waterproof cap or dust cap for Panel Thickness Max: 3.0mm
  - \* Use without waterproof cap or dust cap for Panel Thickness Max: 4.2mm
  - \* Plug: 8P8C, Gold Plated, Shielded
  - \* Recommend Torque for Panel Nut: 8~10kgf-cm
  - \* Cable: CAT5E FTP 24AWG\*4P+My+Drain+Al/My(UV Resistant), OD=6.5mm, Black



Shield	Drain Wire	地線	Shield
8	Borwn	棕	8
7	Brown /White	棕/白	7
6	Green	綠	6
5	Blue/White	藍/白	5
4	Blue	藍	4
3	Green/White	綠/白	3
2	Orange	橘	2
1	Orange/White	橘/白	1
Plug	Wire Color		Conn.2



UNIT:mm		TITLE	RJ45,C SIZE,PCB W/CABLE		
TOLERANCE	.X ±0.25 .XX ±0.1 .XXX ±0.05 ANGLES ±1°	SCALE	I:1	SIZE	A4
		REV.	D	WC-REV.	A.4
				$\varnothing$	Inspection item

**Amphenol LTW**  
安費諾亮泰企業股份有限公司

ITEM NO	DRAWN BY	DATE
DWG NO	LOD	2014/10/03
RCM-5SPFFP-SCU7BXX	Ann	2014/10/03
CUSTOMER	APPROVED BY	DATE
ALTW	Win	2014/10/03