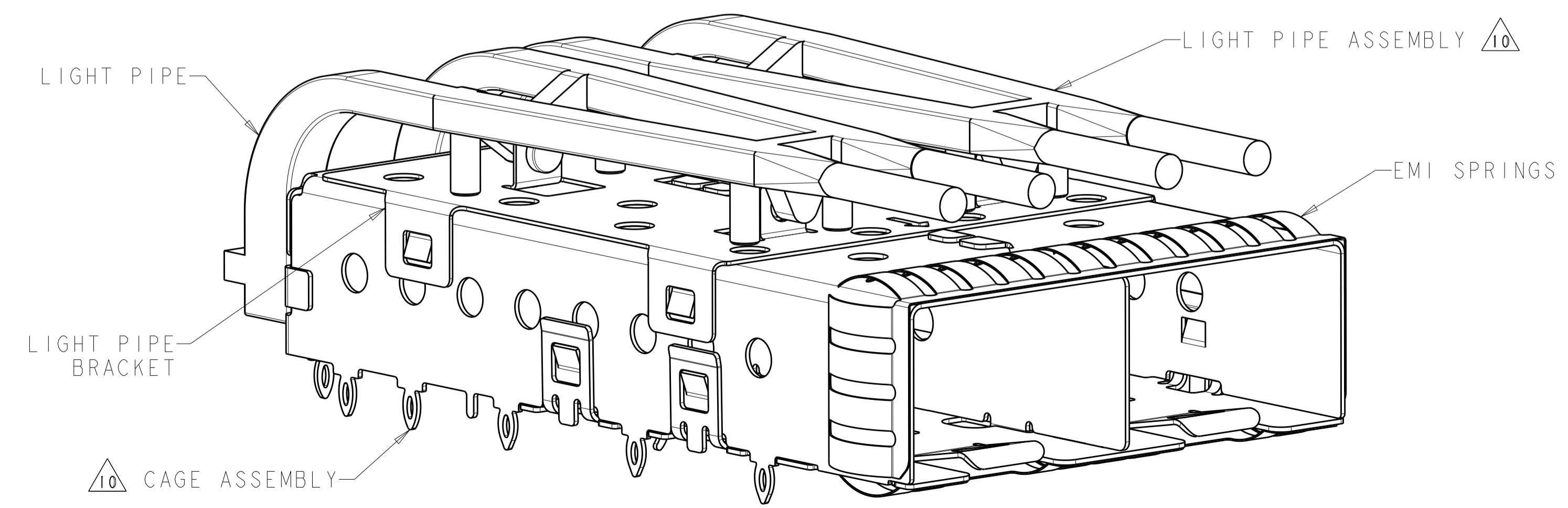
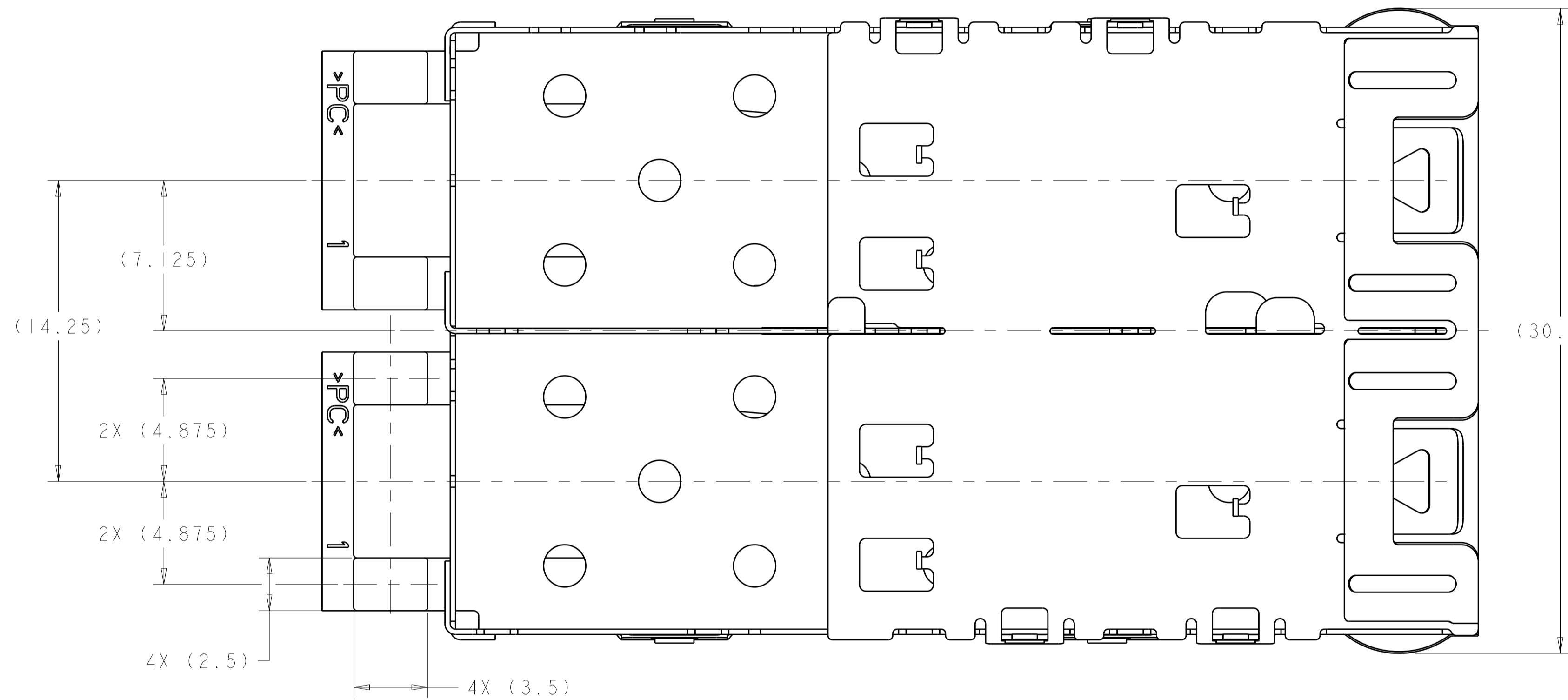
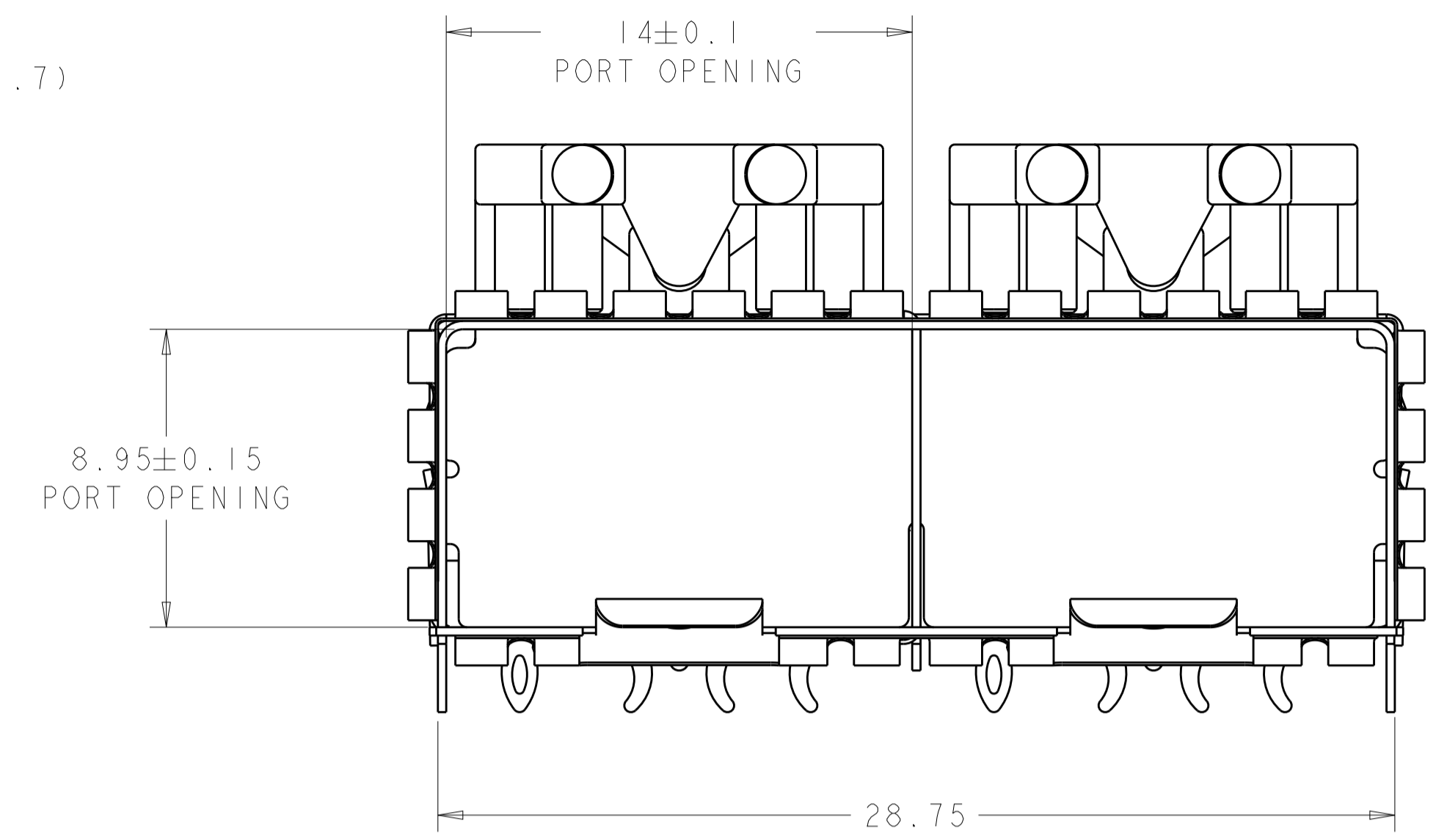
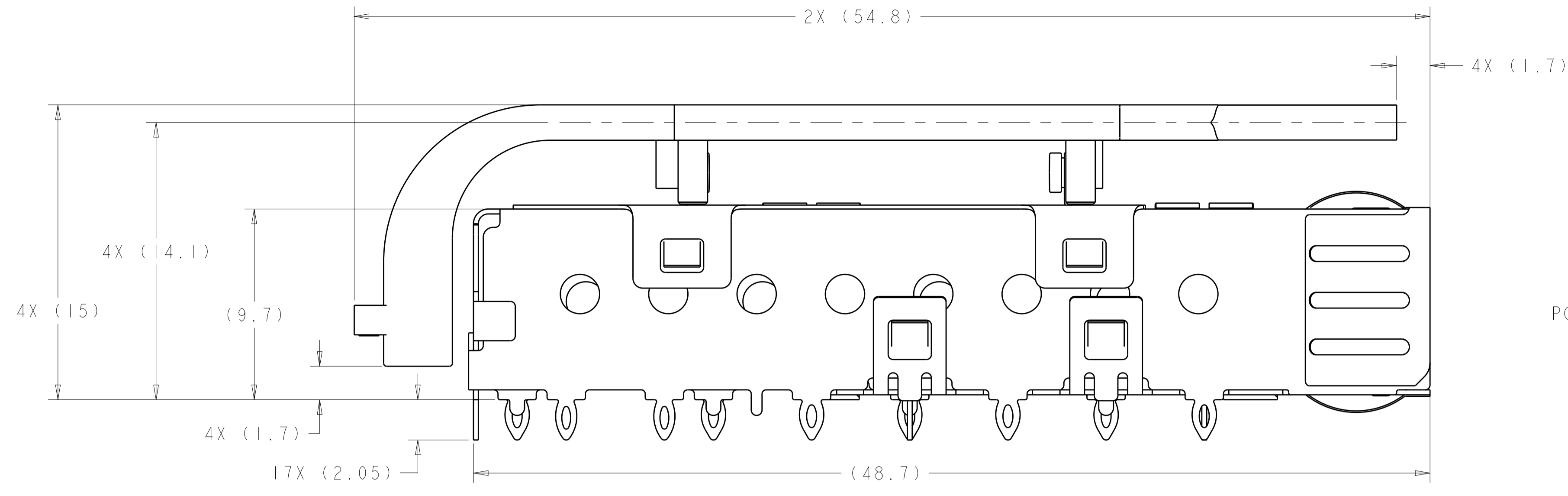


LOC	DIST	REVISIONS			
P	LTN	DESCRIPTION	DATE	DWN	APVD
B		REVISED PER ECO-09-022874	9OCT2009	ZMR	MRS
C		REVISED PER ECO-10-004036	26FEB2010	CJV	MRS
D		REVISED PER ECO-11-019224	16JAN2012	TX	AC
E		REVISED PER ECO-12-014021	10DEC2012	TD	AC



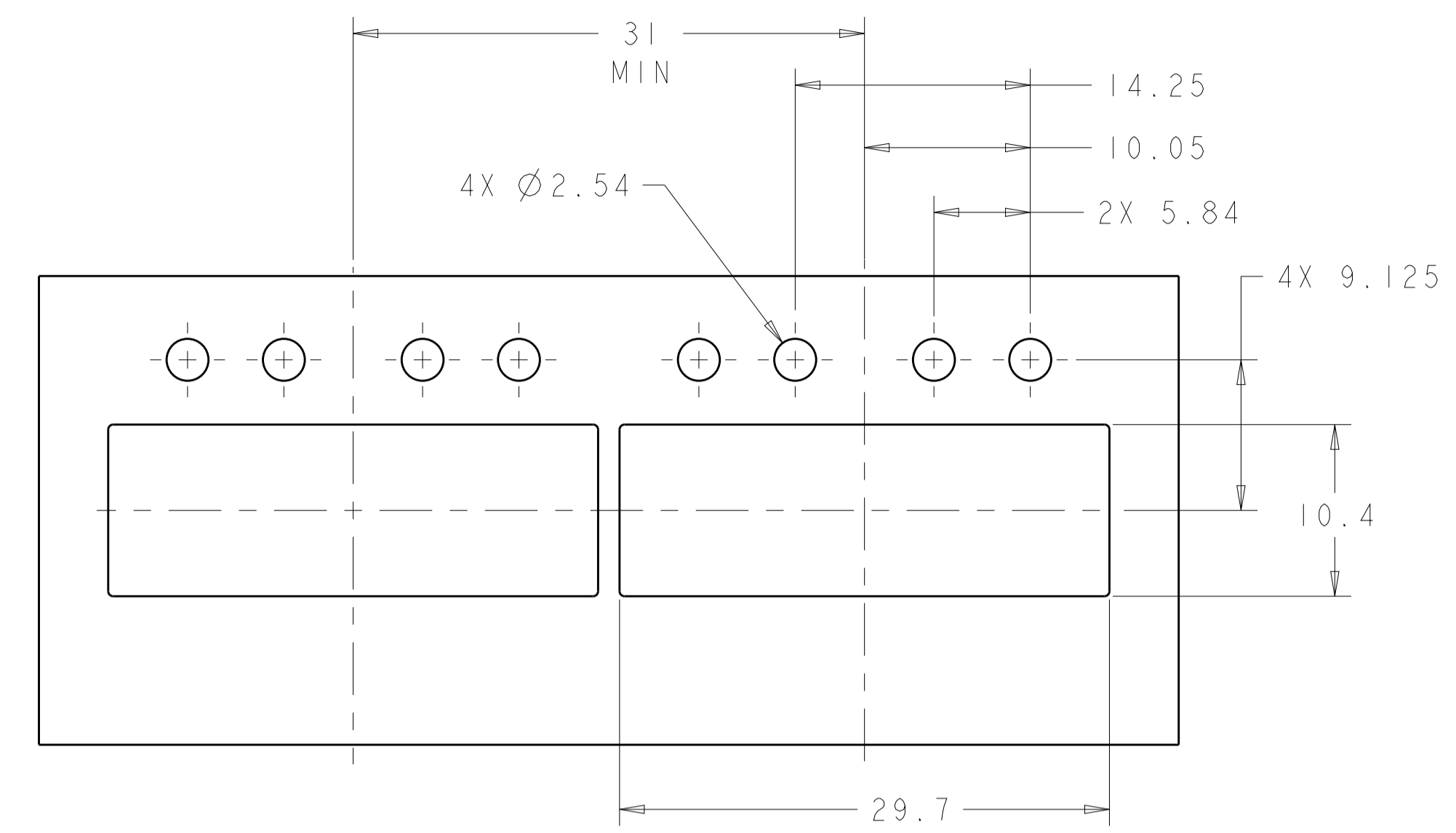
- 1. MATERIAL:  
 CAGE ASSEMBLY: 0.25mm THICK NICKEL SILVER ALLOY  
 LIGHT PIPE BRACKET: STAINLESS STEEL  
 LIGHT PIPE: POLYCARBONATE, CLEAR
- 2. FINISH:  
 SPRINGS: MINIMUM OF 0.8um MATTE TIN PLATE OVER A MINIMUM OF 0.8um NICKEL UNDERPLATE. NON-PLATED EDGES PERMISSIBLE.
- 3. MATES WITH SFP MSA COMPLIANT TRANSCEIVERS.
- 4. PADS AND VIAS CHASSIS GROUND.
- 5. INTERPRETATION OF DATUM REFERENCE FRAME IN ACCORDANCE WITH SECT 4.4.1.1 OF ASME Y14.5M-1994.
- 6. MINIMUM PC BOARD THICKNESS:  
 SINGLE SIDED = 1.50  
 DOUBLE SIDED = 2.25
- 7. HOLE PATTERN REPEATS FOR EACH PORT. SPACING BETWEEN PORTS IS 14.25mm.
- 8. REFERENCE APPLICATION SPEC. 114-13120, HOLE A, FOR RECOMMENDED DRILL HOLE DIAMETER AND PLATING THICKNESS.
- 9. REFERENCE APPLICATION SPEC. 114-13120, HOLE B, FOR RECOMMENDED DRILL HOLE DIAMETER AND PLATING THICKNESS.
- 10. LIGHT PIPE ASSEMBLY SHIPPED UNASSEMBLED TO CAGE ASSEMBLY. CAGE ASSEMBLY TO BE PRESSED INTO THE PCB PRIOR TO ATTACHING THE LIGHT PIPE ASSEMBLY TO THE CAGE.
- 11. DATUM AND BASIC DIMENSION ESTABLISHED BY CUSTOMER.
- 12. CERTAIN MATING TRANSCEIVERS MAY REQUIRE ADDITIONAL PCB THICKNESS THAT WOULD NEED TO BE DETERMINED BY THE CUSTOMER.
- 13. PRODUCT COMPLIES WITH SPECIFICATION SFF-8433 IMPROVED PLUGGABLE FORM FACTOR FOR SFP+ GANGED CAGES.

2007262-1  
 FINISHED ASSEMBLY  
 SCALE 5:1

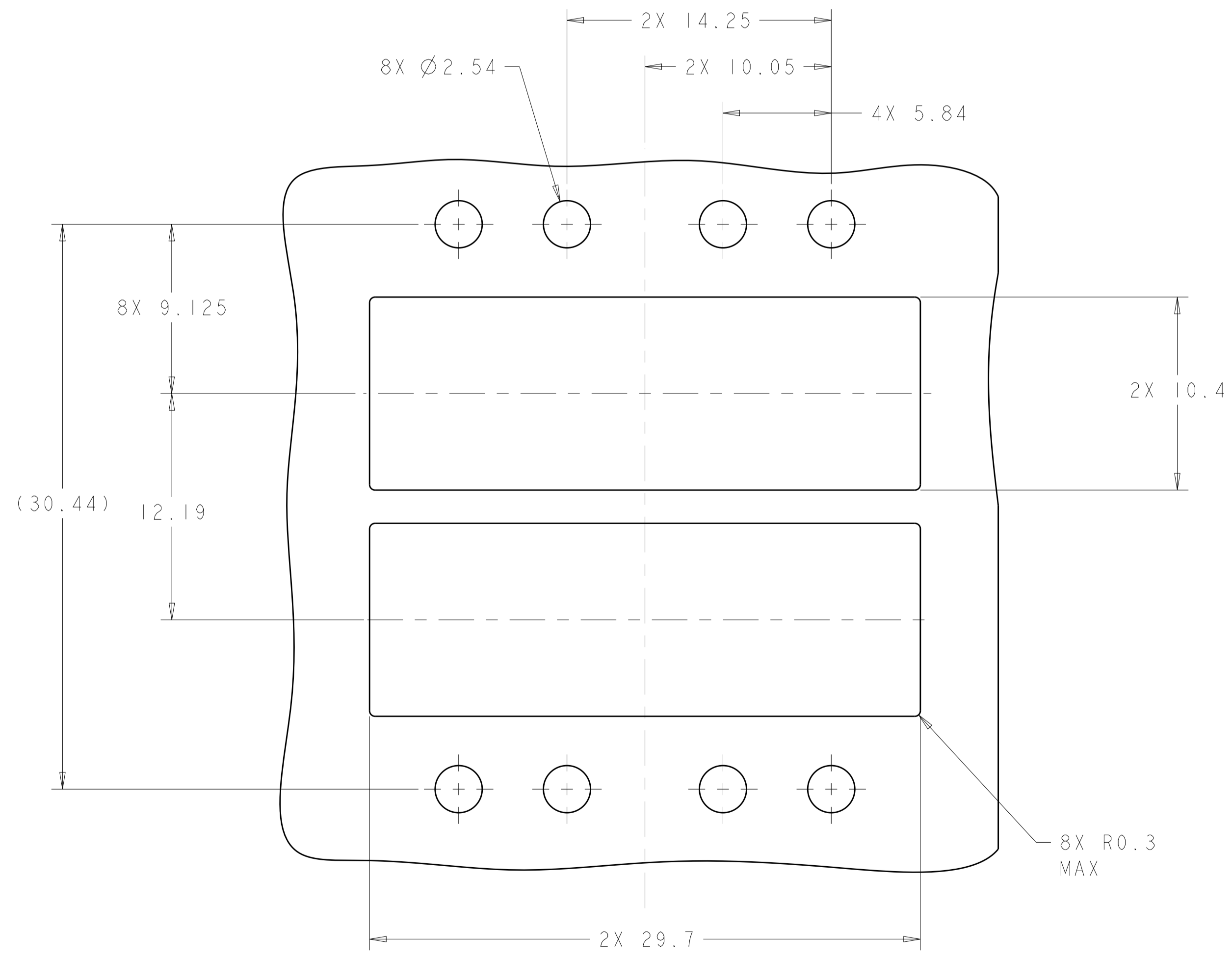
2007262-1  
 PART NUMBER

THIS DRAWING IS A CONTROLLED DOCUMENT.		DWN M. SCHMITT 18JUL2007	TE Connectivity	
DIMENSIONS: mm		CHK M. SCHMITT 18JUL2007	NAME SFP+ 1X2 CAGE ASSEMBLY PRESS FIT, EXTERNAL EMI SPRINGS WITH LIGHT PIPES	
TOLERANCES UNLESS OTHERWISE SPECIFIED: 0 PLC ±0.1 1 PLC ±0.1 2 PLC ±0.1 3 PLC ±0.1 4 PLC ±0.1 ANGLES ±1°		APVD B. WERTZ 18JUL2007	PRODUCT SPEC 108-2364	
MATERIAL		FINISH	APPLICATION SPEC 114-13120	RESTRICTED TO
			SIZE A1	Customer Drawing
			WEIGHT	SCALE 6:1
			REVISIONS	SHEET 1 OF 4
			REV E	

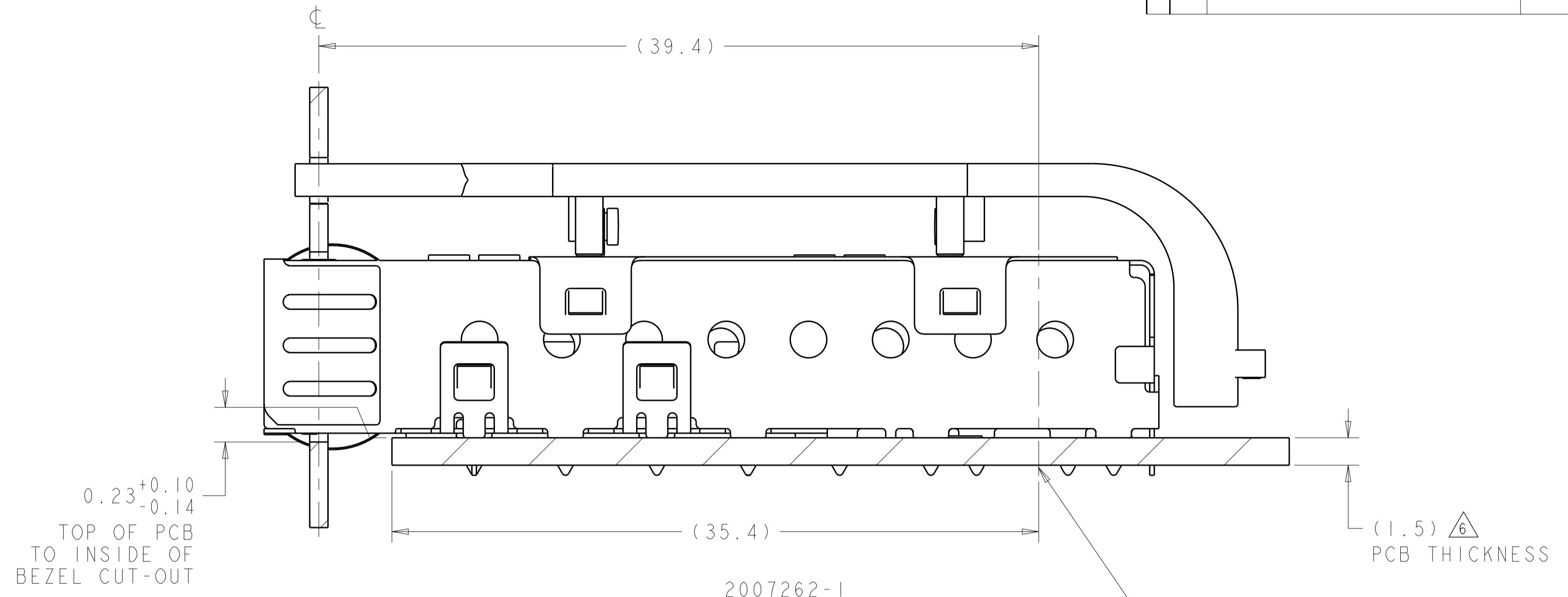
LOC		DIST		REVISIONS			
GP	00	P	LTN	DESCRIPTION	DATE	DMN	APVD
		-		SEE SHEET 1	-	-	-



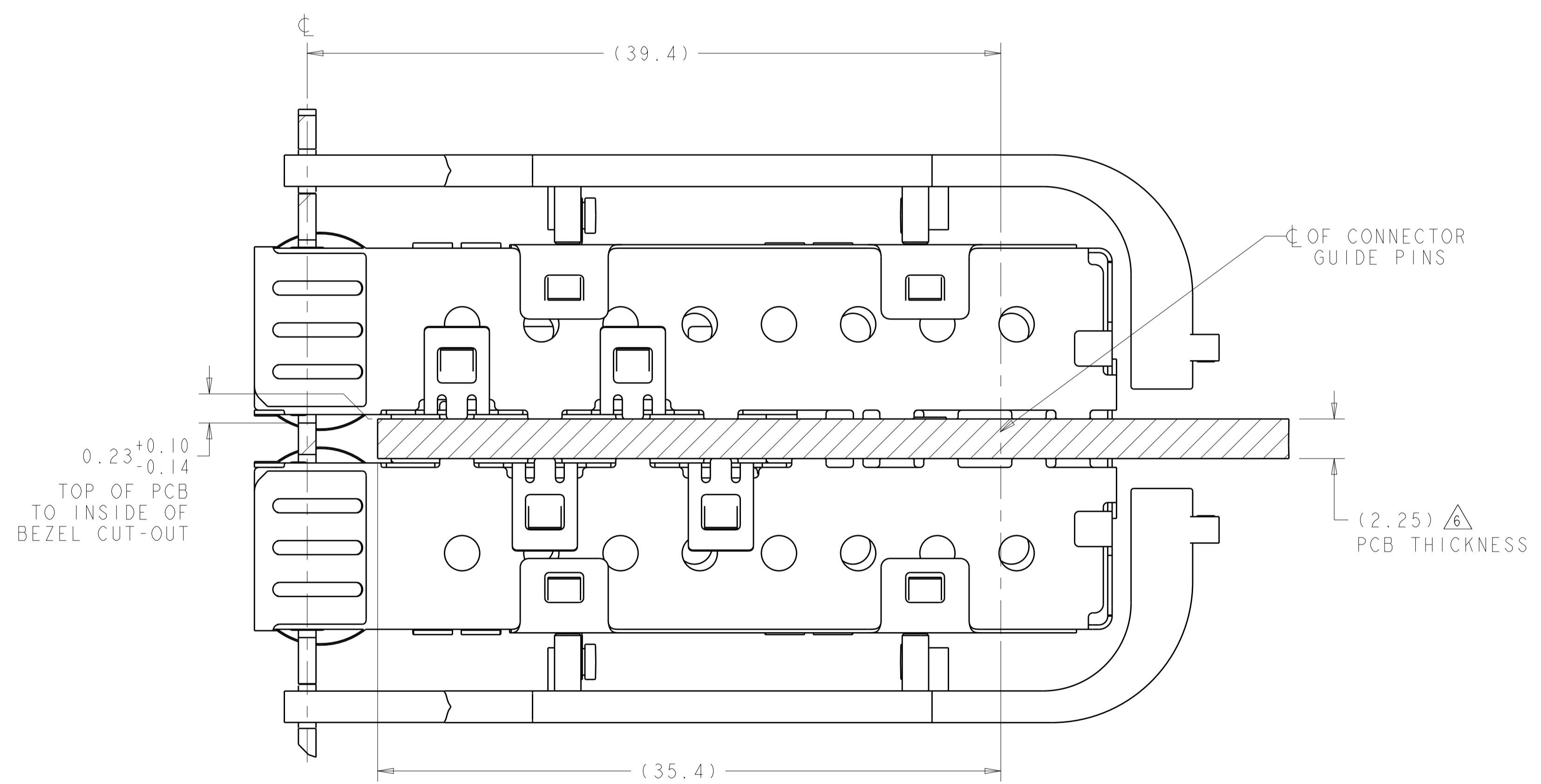
RECOMMENDED BEZEL CUT-OUT  
 SINGLE SIDED APPLICATIONS  
 SCALE 3:1



RECOMMENDED BEZEL CUT-OUT  
 BELLY TO BELLY APPLICATIONS  
 SCALE 5:1



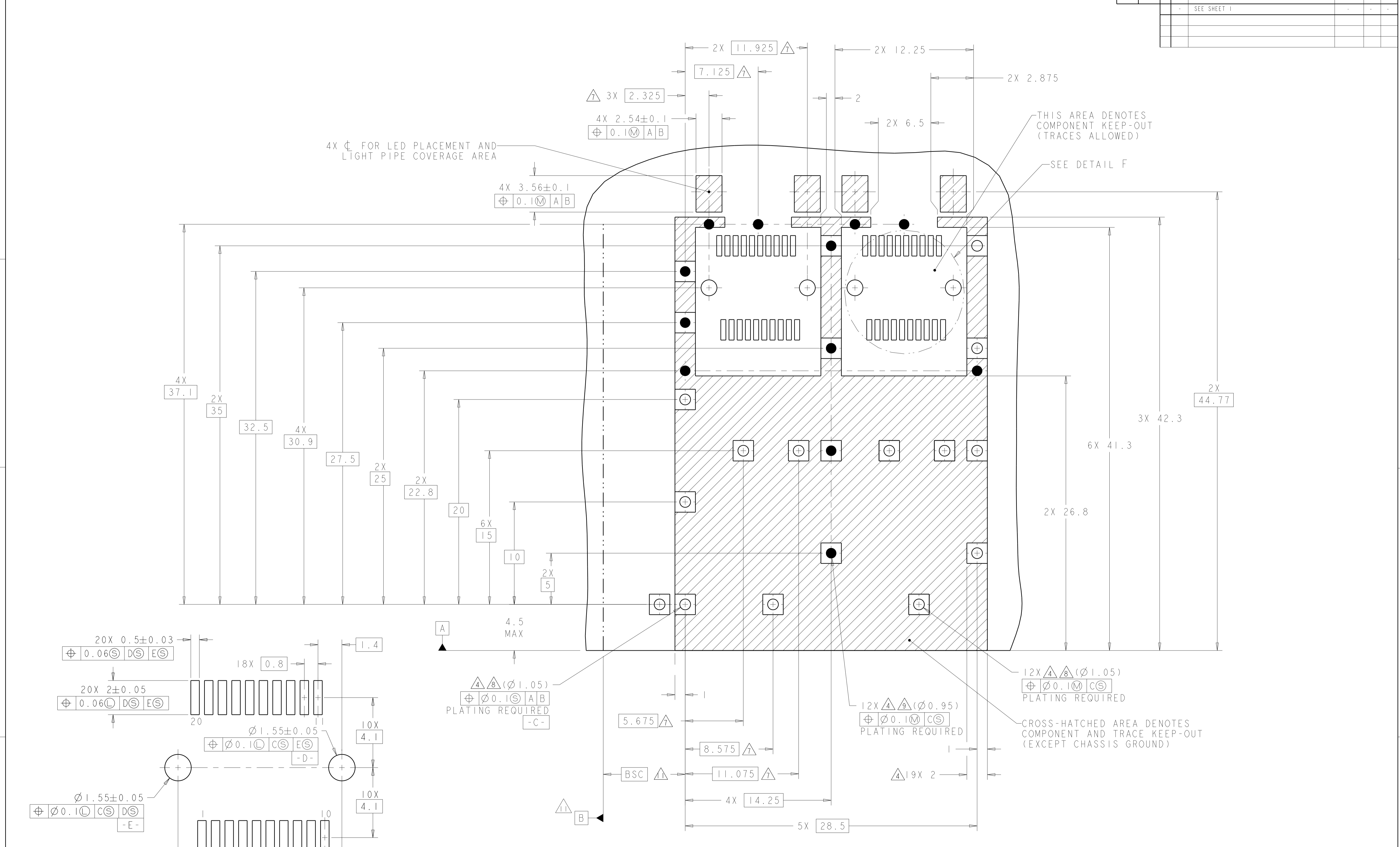
2007262-1  
 MOUNTED ON PCB  
 SHOWN THRU RECOMMENDED BEZEL  
 SCALE 5:1



2007262-1  
 MOUNTED BELLY TO BELLY ON PCB  
 SHOWN THRU RECOMMENDED BEZEL  
 SCALE 5:1

THIS DRAWING IS A CONTROLLED DOCUMENT.		DMN	M. SCHMITT	18JUL2007	TE Connectivity NAME SFP+ 1X2 CAGE ASSEMBLY PRESS FIT, EXTERNAL EMI SPRINGS WITH LIGHT PIPES
DIMENSIONS:		CHK	M. SCHMITT	18JUL2007	
mm		APVD	B. WERTZ	18JUL2007	
TOLERANCES UNLESS OTHERWISE SPECIFIED: 0 PLC ±0.1 1 PLC ±0.1 2 PLC ±0.1 3 PLC ±0.1 4 PLC ±0.1 ANGLES ±0.1 FINISH ±1°		PRODUCT SPEC	108-2364	APPLICATION SPEC	
MATERIAL		114-13120		WEIGHT	SIZE
		Customer Drawing		SCALE	6:1
		A100779		C=2007262	SHEET
				REV	2 OF 4
				REV	E

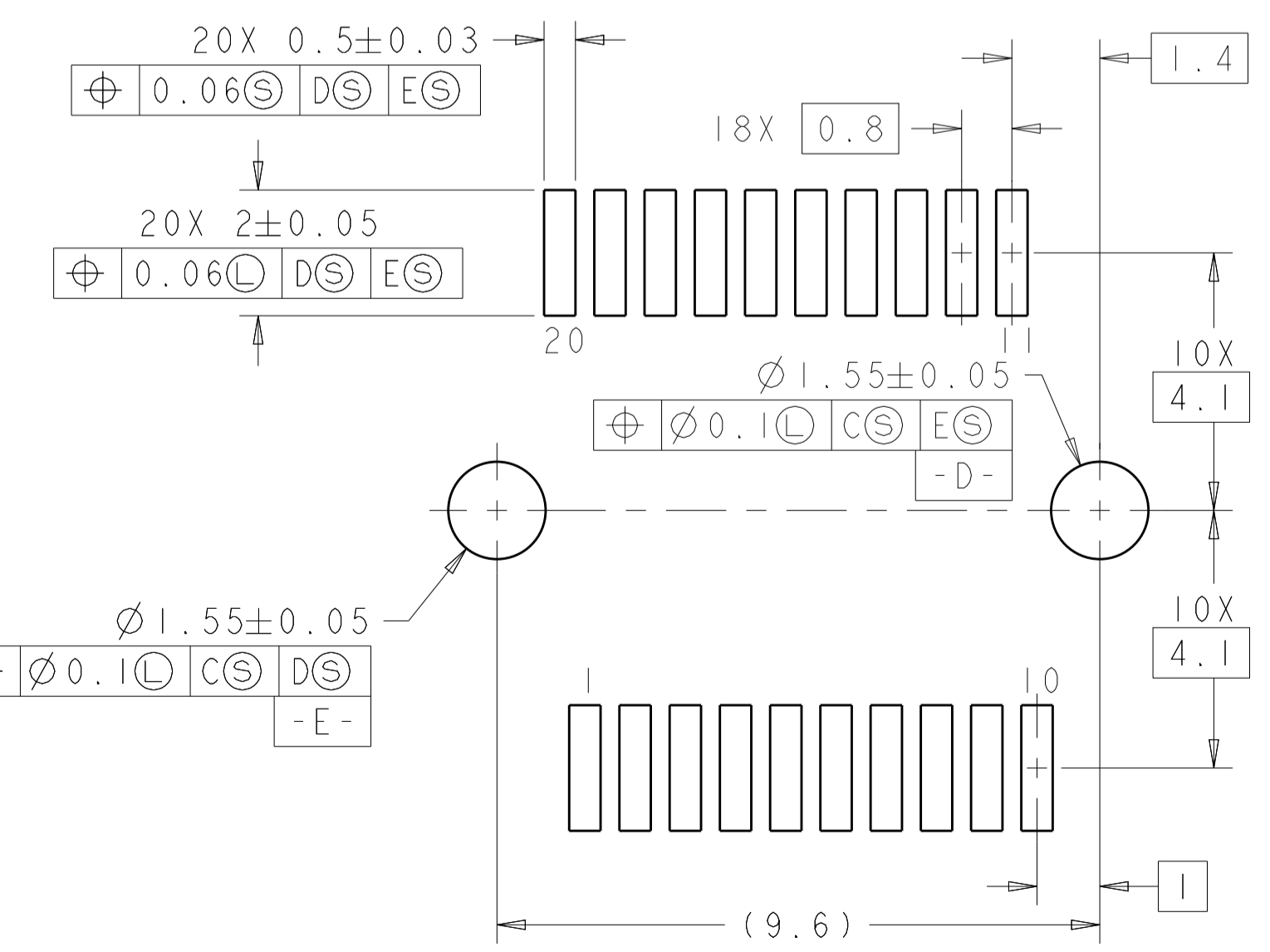
LOC	DIST	REVISIONS		
		P	LTH	DATE
GP	00	-	SEE SHEET 1	-



4X  $\varnothing$  FOR LED PLACEMENT AND  
 LIGHT PIPE COVERAGE AREA

THIS AREA DENOTES  
 COMPONENT KEEP-OUT  
 (TRACES ALLOWED)

SEE DETAIL F



DETAIL F  
 RECOMMENDED PT CONNECTOR LAYOUT  
 2X INDIVIDUALLY  
 SCALE 10:1

RECOMMENDED PCB CONFIGURATION  
 WITH KEEP-OUT AREAS  
 SINGLE SIDED APPLICATION

DIMENSIONS:		TOLERANCES UNLESS OTHERWISE SPECIFIED:	
mm	0 PLC	$\pm 0.1$	
	1 PLC	$\pm 0.1$	
	2 PLC	$\pm 0.1$	
	3 PLC	$\pm 0.1$	
	4 PLC	$\pm 0.1$	
	ANGLES	$\pm 0.1$	
MATERIAL:	FINISH:	FINISH: $\pm 1^{\circ}$	

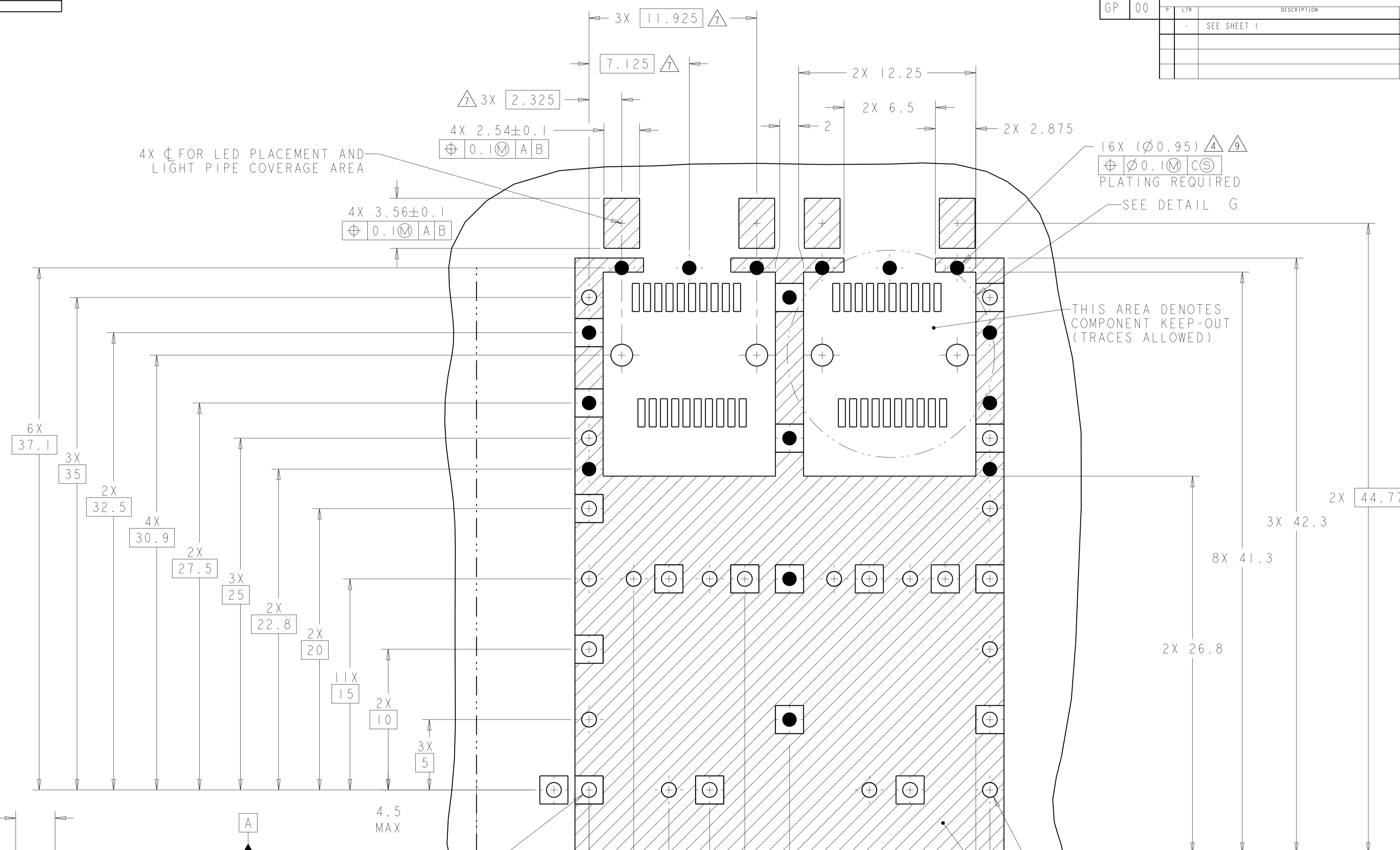
  

APVD	M. SCHMITT	18JUL2007
CHK	M. SCHMITT	18JUL2007
APPD	B. WERTZ	18JUL2007
PRODUCT SPEC		
APPLICATION SPEC		
SIZE	CAGE CODE	DRAWING NO
RESTRICTED TO		
A1	00779	2007262



TE Connectivity  
 SFP+ 1X2 CAGE ASSEMBLY  
 PRESS FIT, EXTERNAL EMI SPRINGS  
 WITH LIGHT PIPES

LOC	DIST	REV	DATE	BY	APPV
GP	00				



4X  $\phi$  FOR LED PLACEMENT AND LIGHT PIPE COVERAGE AREA

16X (Ø0.95)  $\Delta$   $\Delta$   
 $\phi$  Ø0.10  $\text{CS}$   
 PLATING REQUIRED  
 SEE DETAIL G

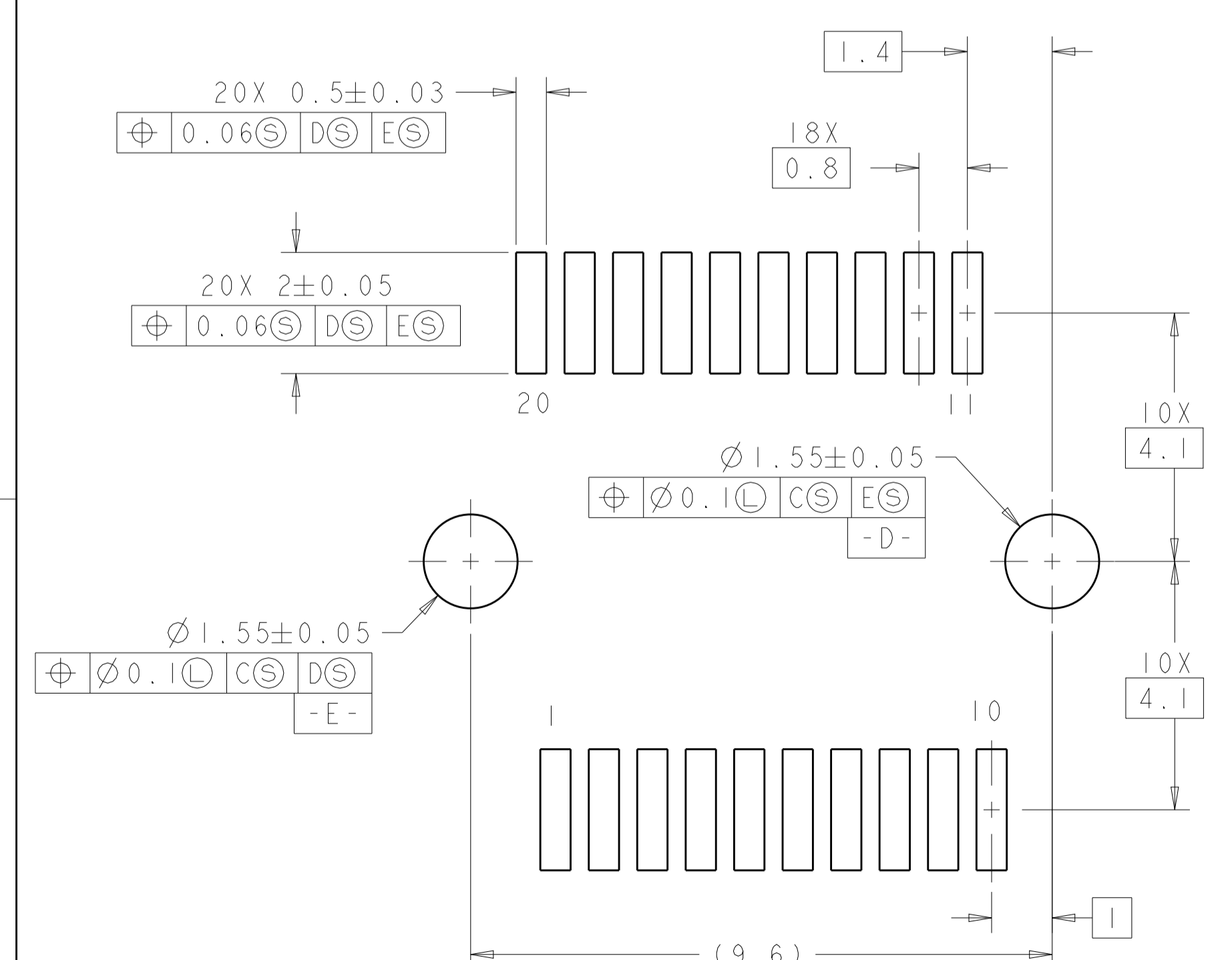
THIS AREA DENOTES COMPONENT KEEP-OUT (TRACES ALLOWED)

$\Delta$   $\Delta$  (Ø1.05)  
 $\phi$  Ø0.10  $\text{CS}$   $\text{AB}$   
 PLATING REQUIRED  
 -C-

25X (Ø1.05)  $\Delta$   $\Delta$   
 $\phi$  Ø0.10  $\text{CS}$   
 PLATING REQUIRED

CROSS-HATCHED AREA DENOTES COMPONENT AND TRACE KEEP-OUT (EXCEPT CHASSIS GROUND)

RECOMMENDED PCB CONFIGURATION WITH KEEP-OUT AREAS BELLY TO BELLY APPLICATIONS  $\Delta$



DETAIL G  
 RECOMMENDED PT CONNECTOR LAYOUT  
 4X INDIVIDUALLY  
 SCALE 12:1

THIS DRAWING IS A CONTROLLED DOCUMENT.		OWN: M. SCHMITT 18JUL2007	TE Connectivity NAME: SFP+ 1X2 CAGE ASSEMBLY PRESS FIT, EXTERNAL EMI SPRINGS WITH LIGHT PIPES PRODUCT SPEC: 108-2364 APPLICATION SPEC: 114-13120 WEIGHT: - Customer Drawing
DIMENSIONS: mm		CHK: M. SCHMITT 18JUL2007	
TOLERANCES UNLESS OTHERWISE SPECIFIED:		APPV: B. WERTZ 18JUL2007	SIZE: A1 00779 C=2007262
0 PLC	±0.1	RESTRICTED TO	SCALE: 6:1 SHEET 4 OF 4 REV E
1 PLC	±0.1		
2 PLC	±0.1		
3 PLC	±0.1		
4 PLC	±0.1		
ANGLES	±1°		
MATERIAL:	FINISH:		