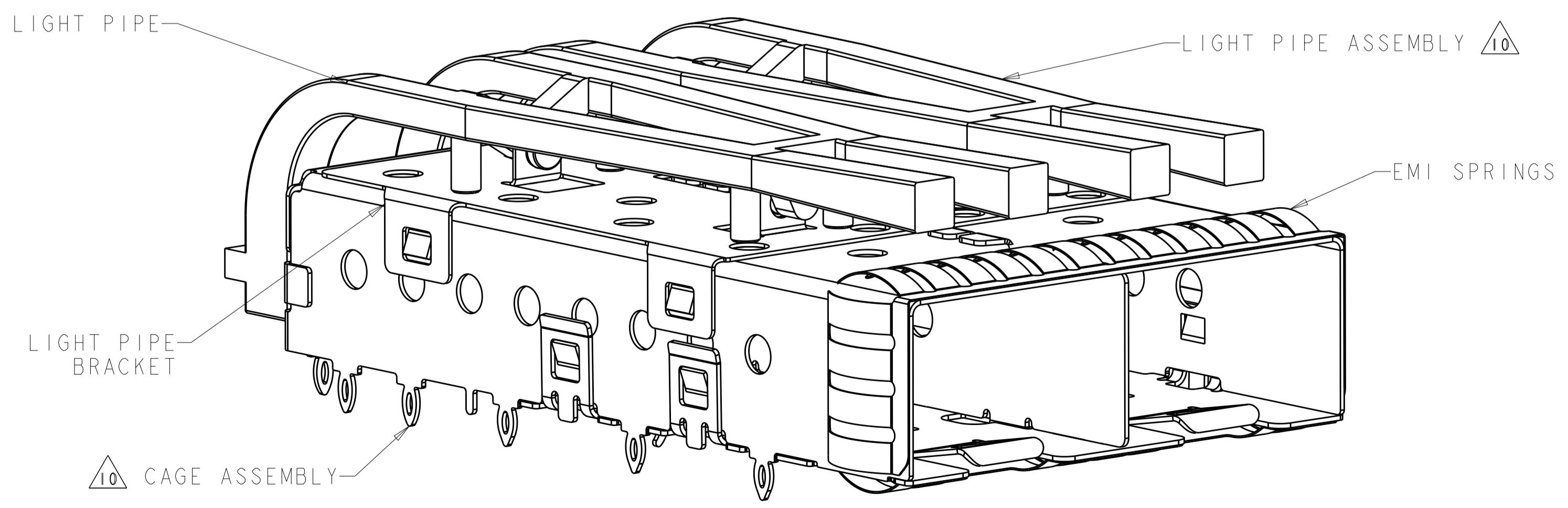
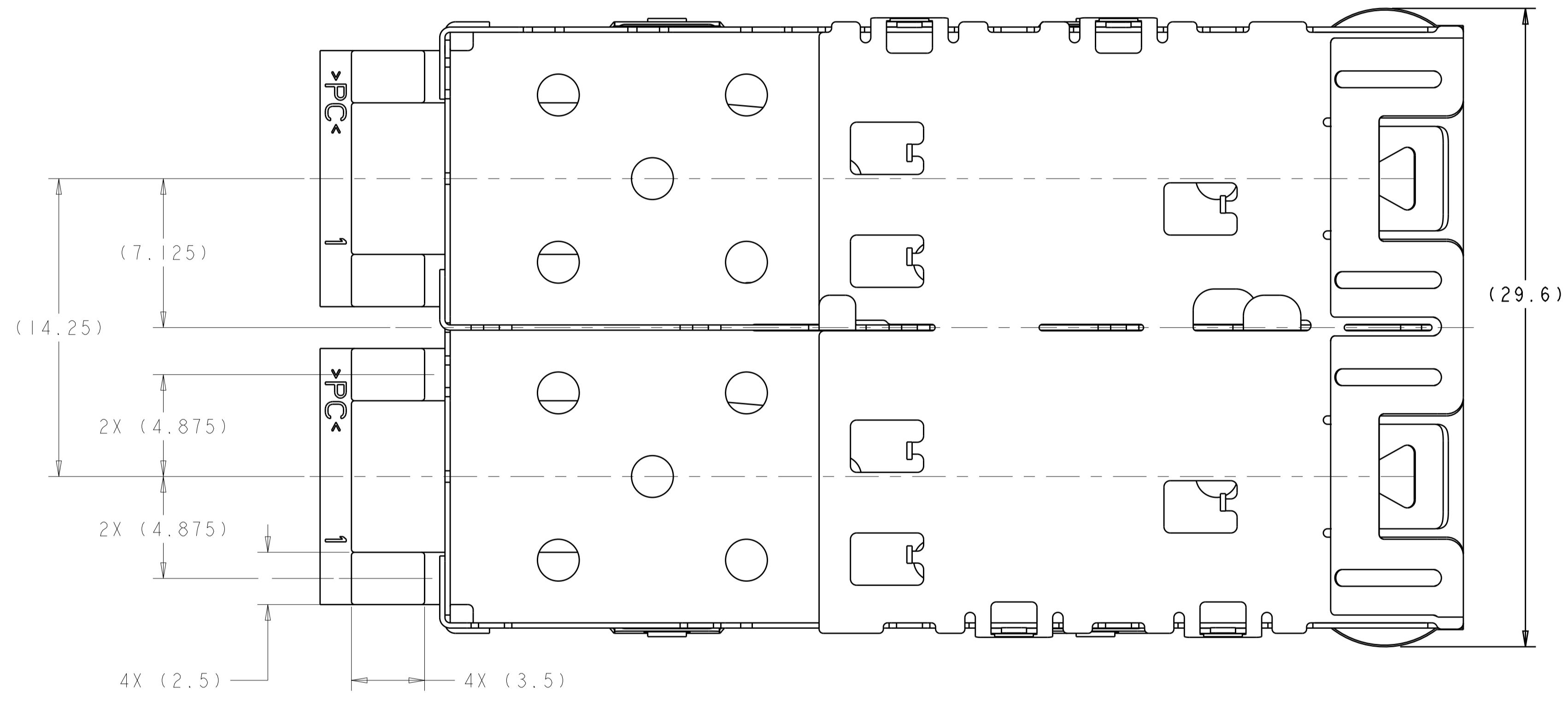
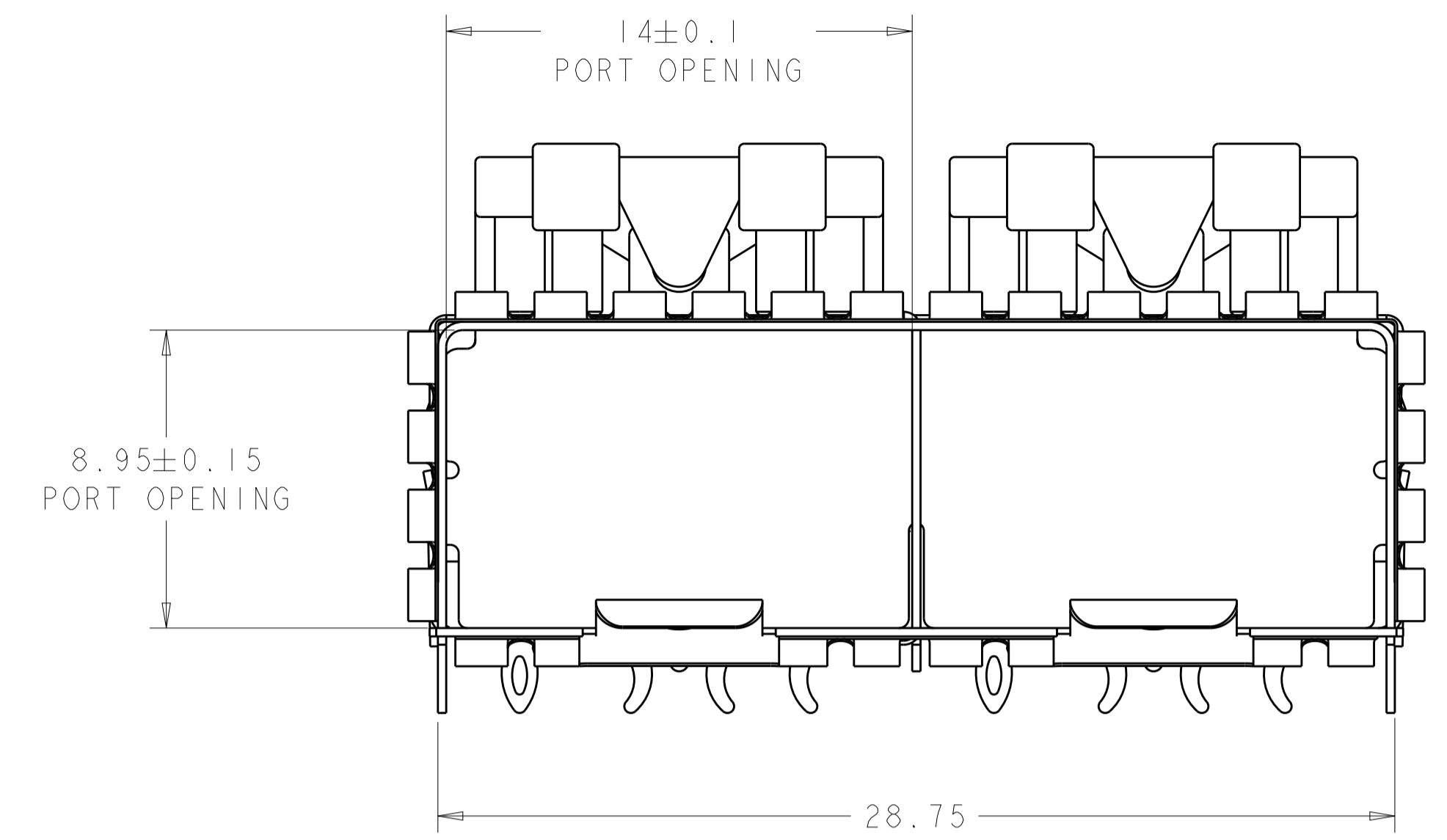
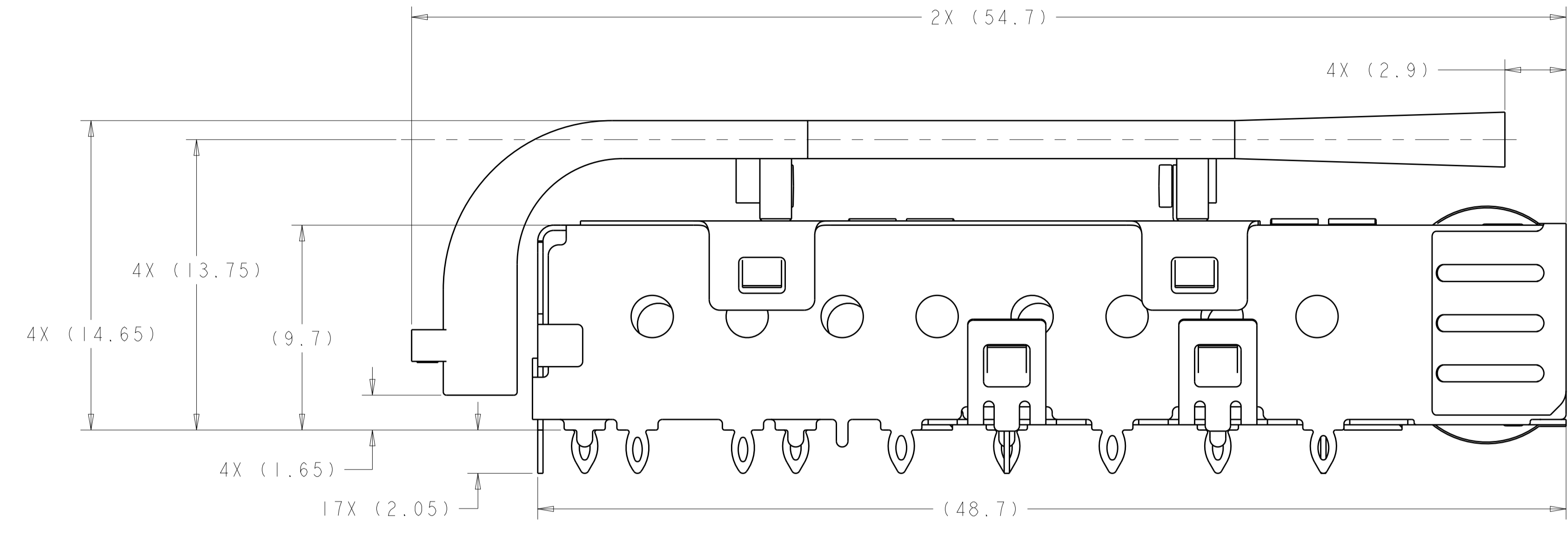


| LOC | DIST | REVISIONS | | | |
|-----|------|-------------|--------------------|-----------|-------|
| P | LTN | DESCRIPTION | DATE | DWN | APVD |
| GP | 00 | A | PRODUCTION RELEASE | 29FEB2016 | JW SH |



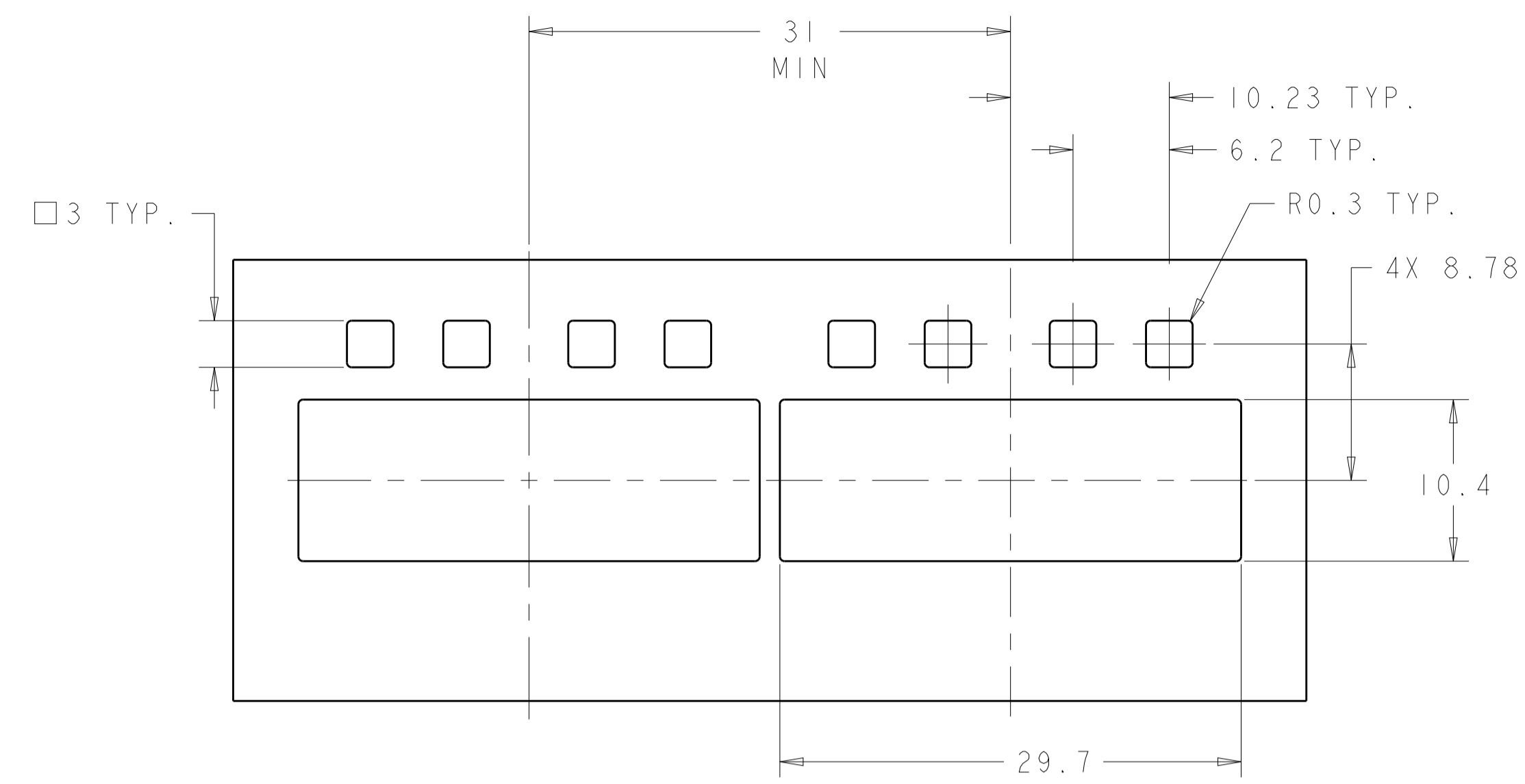
- 1. MATERIAL:
 CAGE ASSEMBLY: 0.25mm THICK NICKEL SILVER ALLOY
 LIGHT PIPE BRACKET: STAINLESS STEEL
 LIGHT PIPE: POLYCARBONATE, CLEAR
- 2. FINISH:
 SPRINGS: MINIMUM OF 0.8um MATTE TIN PLATE OVER A MINIMUM OF 0.8um NICKEL UNDERPLATE. NON-PLATED EDGES PERMISSIBLE.
- 3. MATES WITH SFP MSA COMPLIANT TRANSCEIVERS.
- 4. PADS AND VIAS CHASSIS GROUND.
- 5. INTERPRETATION OF DATUM REFERENCE FRAME IN ACCORDANCE WITH SECT 4.4.1.1 OF ASME Y14.5M-1994.
- 6. MINIMUM PC BOARD THICKNESS:
 SINGLE SIDED = 1.50
 DOUBLE SIDED = 2.25
- 7. HOLE PATTERN REPEATS FOR EACH PORT. SPACING BETWEEN PORTS IS 14.25mm.
- 8. REFERENCE APPLICATION SPEC. 114-13120, HOLE A, FOR RECOMMENDED DRILL HOLE DIAMETER AND PLATING THICKNESS.
- 9. REFERENCE APPLICATION SPEC. 114-13120, HOLE B, FOR RECOMMENDED DRILL HOLE DIAMETER AND PLATING THICKNESS.
- 10. LIGHT PIPE ASSEMBLY SHIPPED UNASSEMBLED TO CAGE ASSEMBLY. CAGE ASSEMBLY TO BE PRESSED INTO THE PCB PRIOR TO ATTACHING THE LIGHT PIPE ASSEMBLY TO THE CAGE.
- 11. DATUM AND BASIC DIMENSION ESTABLISHED BY CUSTOMER.
- 12. CERTAIN MATING TRANSCEIVERS MAY REQUIRE ADDITIONAL PCB THICKNESS THAT WOULD NEED TO BE DETERMINED BY THE CUSTOMER.
- 13. PRODUCT COMPLIES WITH SPECIFICATION SFF-8433 IMPROVED PLUGGABLE FORM FACTOR FOR SFP+ GANGED CAGES.

2170139-1
 FINISHED ASSEMBLY
 SCALE 5:1

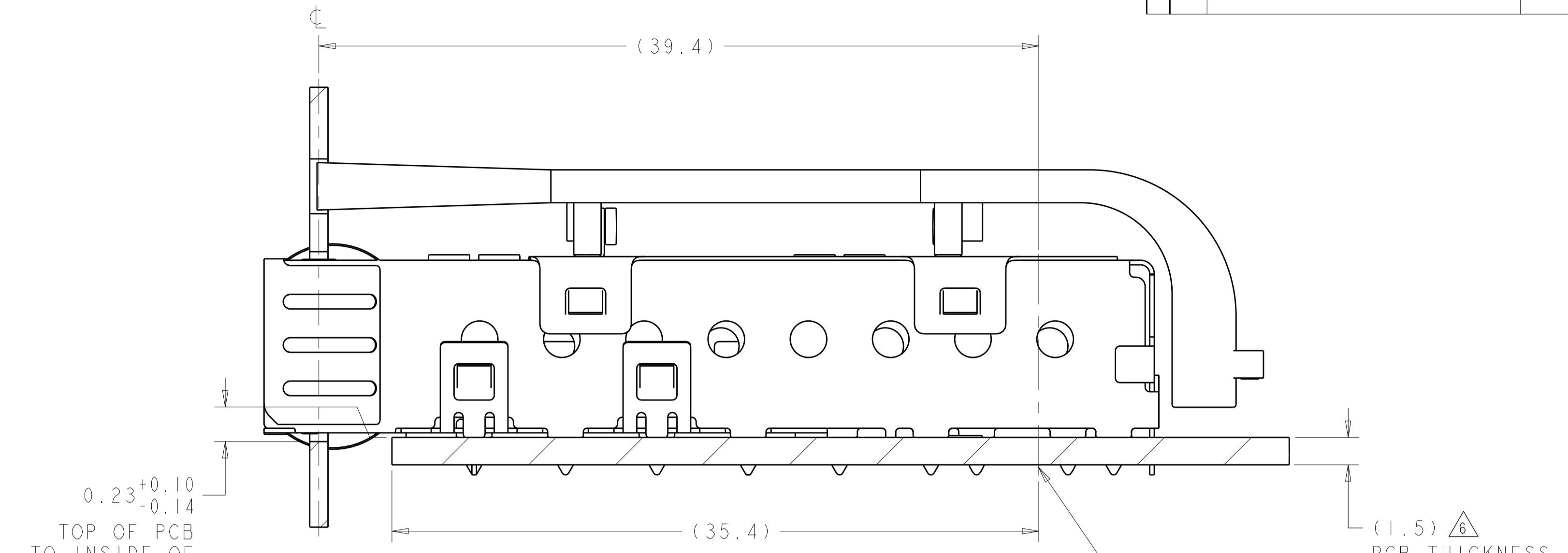
2170139-1
 PART NUMBER

| | | | | |
|--|--|------------------------------|---|--|
| THIS DRAWING IS A CONTROLLED DOCUMENT. | | DWN TIM XUE 18AUG2011 | TE Connectivity | |
| DIMENSIONS: mm | | CHK C. WANG 18AUG2011 | NAME SFP+ 1X2 CAGE ASSEMBLY PRESS FIT, EXTERNAL EMI SPRINGS WITH LIGHT PIPES | |
| TOLERANCES UNLESS OTHERWISE SPECIFIED: 0 PLC ±0.1 1 PLC ±0.1 2 PLC ±0.1 3 PLC ±0.1 4 PLC ±0.1 ANGLES ±1° | | APVD C. WANG 18AUG2011 | PRODUCT SPEC 108-2364 APPLICATION SPEC 114-13120 | |
| MATERIAL | | FINISH | SIZE A100779 | RESTRICTED TO CAGE CODE DRAWING NO C=2170139 |
| CUSTOMER DRAWING | | SCALE 6:1 | SHEET 1 | OF 4 |

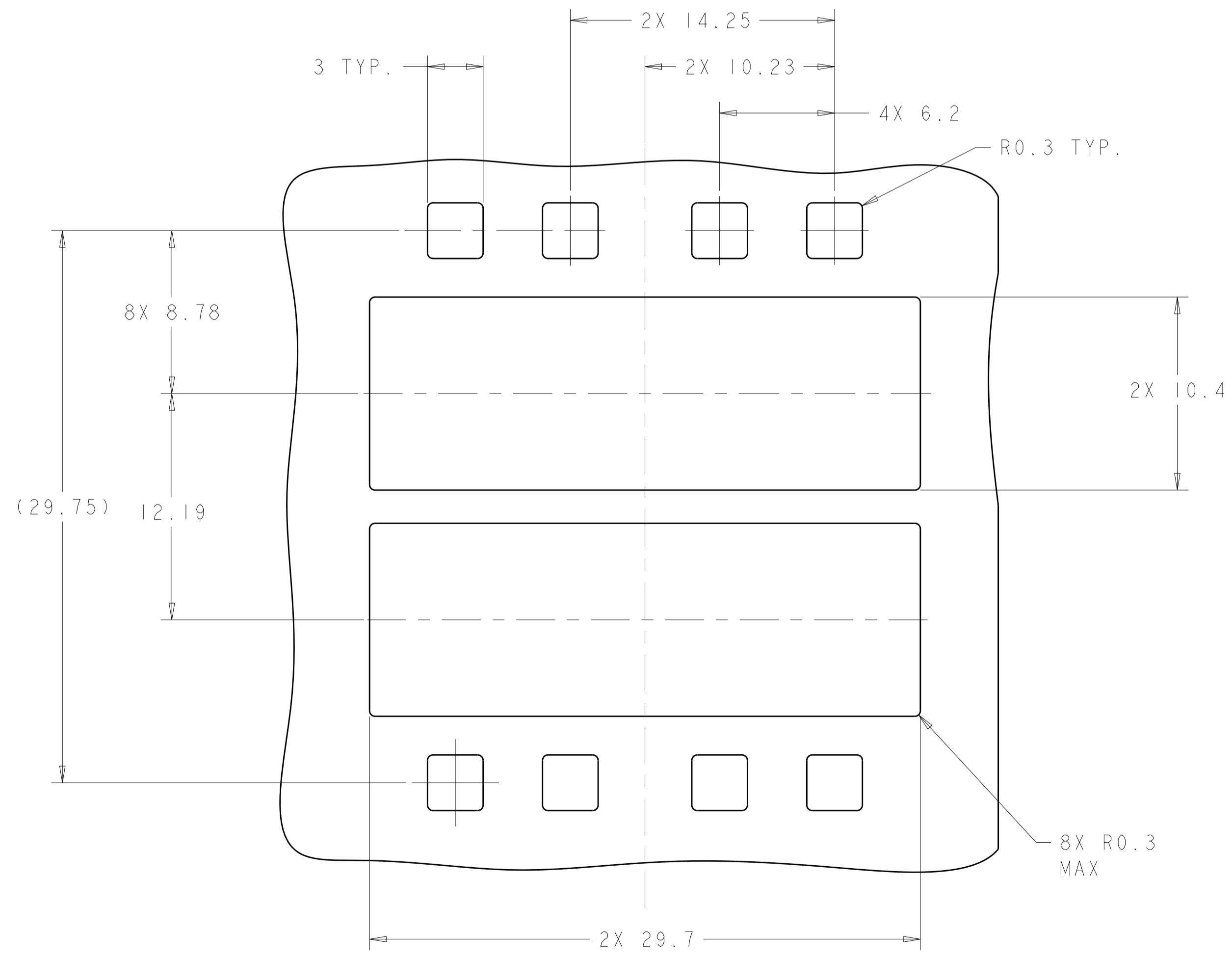
| LOC | | DIST | | REVISIONS | | | |
|-----|----|------|-----|-------------|------|-----|------|
| GP | 00 | P | LTN | DESCRIPTION | DATE | DMN | APVD |
| - | - | - | - | SEE SHEET 1 | - | - | - |



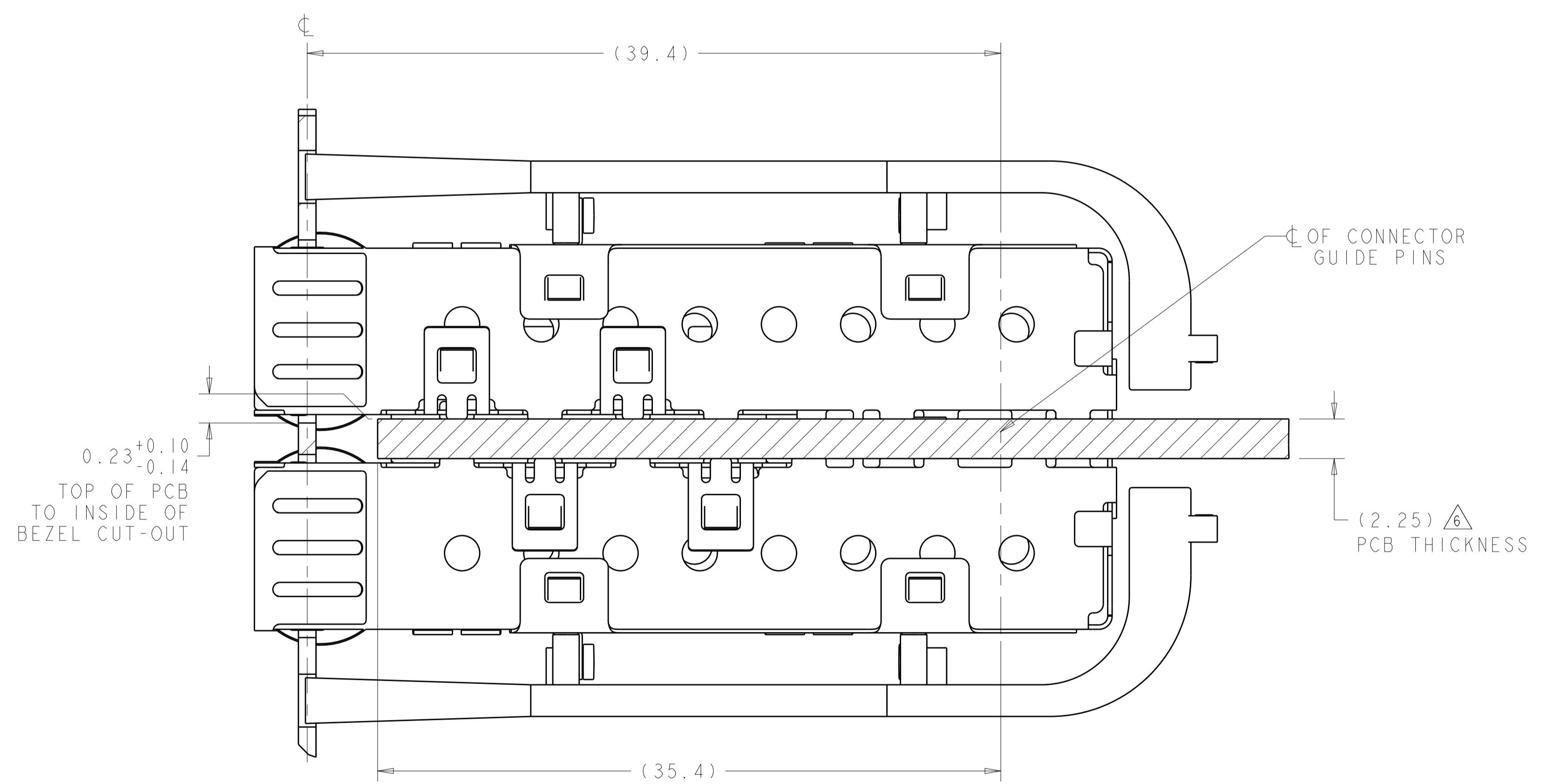
RECOMMENDED BEZEL CUT-OUT
 SINGLE SIDED APPLICATIONS
 SCALE 3:1



2170139-1
 MOUNTED ON PCB
 SHOWN THRU RECOMMENDED BEZEL
 SCALE 5:1



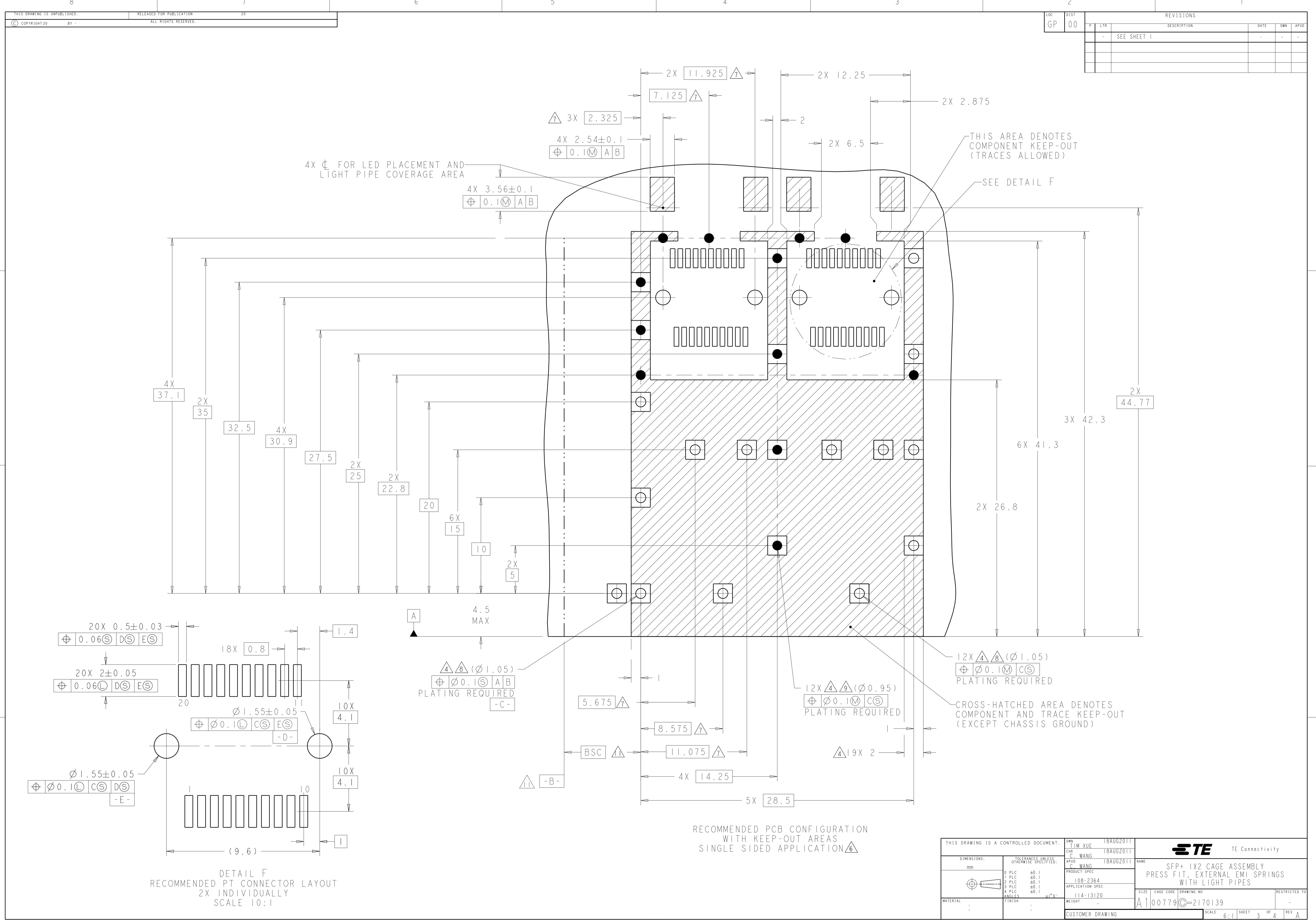
RECOMMENDED BEZEL CUT-OUT
 BELLY TO BELLY APPLICATIONS
 SCALE 5:1



2170139-1
 MOUNTED BELLY TO BELLY ON PCB
 SHOWN THRU RECOMMENDED BEZEL
 SCALE 5:1

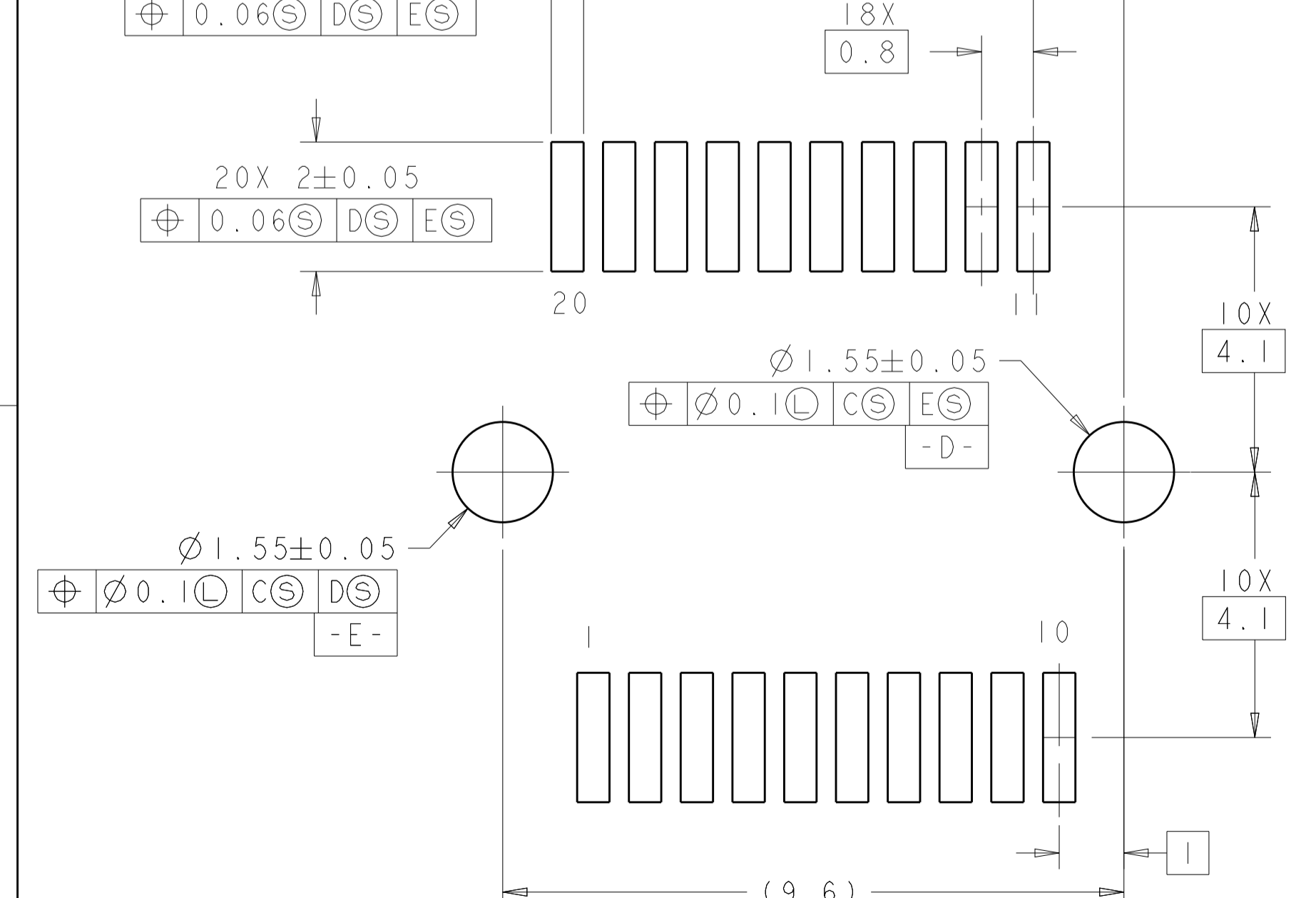
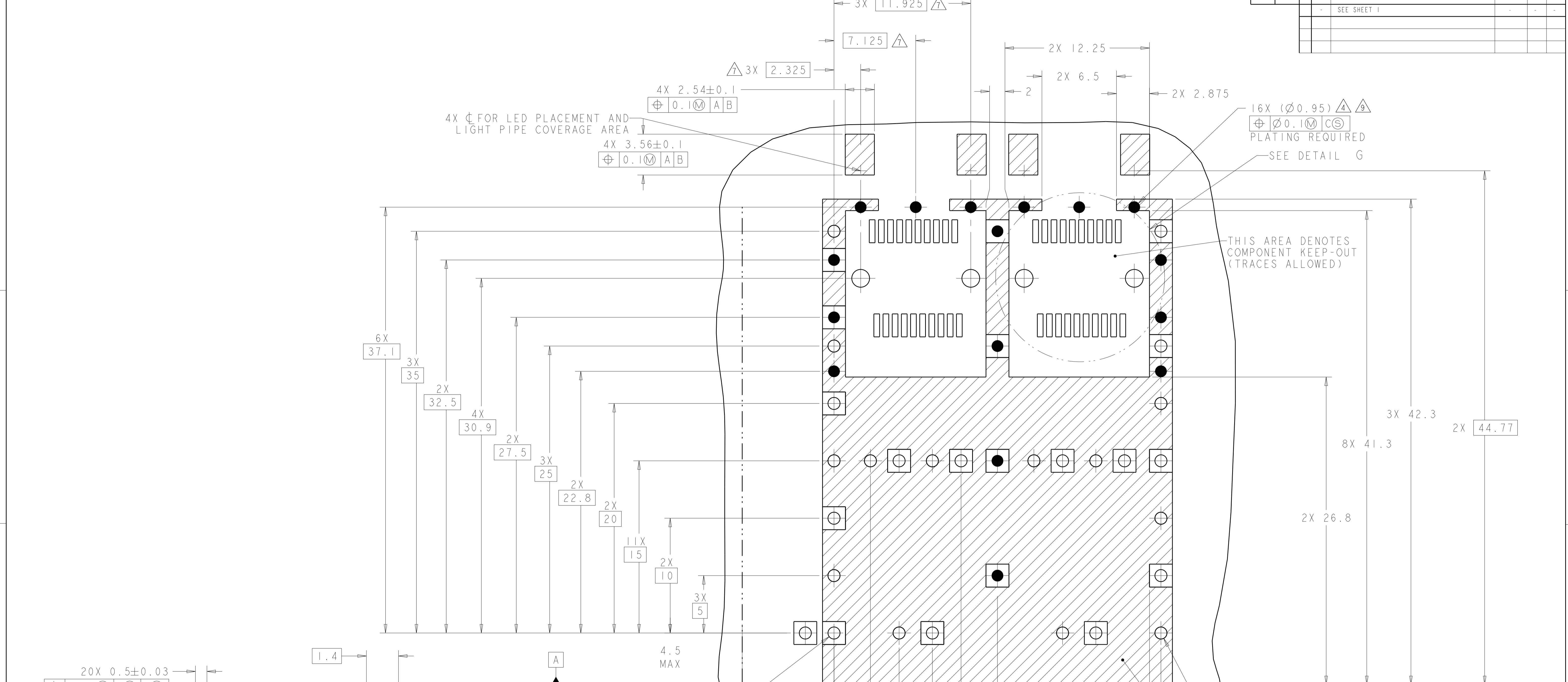
| | | | |
|--|---|-------------------------------|---|
| THIS DRAWING IS A CONTROLLED DOCUMENT. | | DMN TIM XUE 18AUG2011 | TE Connectivity |
| DIMENSIONS: | | CHK C. WANG 18AUG2011 | |
| mm | TOLERANCES UNLESS OTHERWISE SPECIFIED: | APVD C. WANG 18AUG2011 | NAME SFP+ 1X2 CAGE ASSEMBLY PRESS FIT, EXTERNAL EMI SPRINGS WITH LIGHT PIPES |
| | 0 PLC ±0.1 1 PLC ±0.1 2 PLC ±0.1 3 PLC ±0.1 4 PLC ±0.1 ANGLES ±0.1 FINISH ±1° | PRODUCT SPEC 108-2364 | SIZE A100779 |
| MATERIAL | | APPLICATION SPEC 114-13120 | DRAWING NO C=2170139 |
| | | WEIGHT | RESTRICTED TO |
| | | CUSTOMER DRAWING | SCALE 6:1 SHEET 2 OF 4 REV A |

| LOC | DIST | REVISIONS | | | | | |
|-----|------|-----------|-----|-------------|------|-----|------|
| GP | 00 | P | LTN | DESCRIPTION | DATE | DWN | APVD |
| - | - | - | - | SEE SHEET 1 | - | - | - |



| | | | |
|--|--|------------------------------|--|
| THIS DRAWING IS A CONTROLLED DOCUMENT. | | DWN TIM XUE 18AUG2011 | TE Connectivity NAME SFP+ 1X2 CAGE ASSEMBLY PRESS FIT, EXTERNAL EMI SPRINGS WITH LIGHT PIPES |
| DIMENSIONS: | | CHK C. WANG 18AUG2011 | |
| mm | TOLERANCES UNLESS OTHERWISE SPECIFIED: | APVD C. WANG 18AUG2011 | PRODUCT SPEC |
| | 0 PLC ±0.1 | 108-2364 | APPLICATION SPEC |
| | 1 PLC ±0.1 | 114-13120 | SIZE |
| | 3 PLC ±0.1 | WEIGHT | A100779C=2170139 |
| | 4 PLC ±0.1 | CUSTOMER DRAWING | SCALE 6:1 SHEET 3 OF 4 REV A |
| MATERIAL | FINISH | | |

| LOC | DIST | REV | DATE | APPD | APVD |
|-----------|------|-------------|------|------|------|
| GP | 00 | | | | |
| REVISIONS | | | | | |
| | | DESCRIPTION | DATE | DMN | APVD |
| | | SEE SHEET 1 | | | |



DETAIL G
 RECOMMENDED PT CONNECTOR LAYOUT
 4X INDIVIDUALLY
 SCALE 12:1

RECOMMENDED PCB CONFIGURATION
 WITH KEEP-OUT AREAS
 BELLY TO BELLY APPLICATIONS

| | | | | |
|--|------|------------------|---------------------------------|----------------------|
| THIS DRAWING IS A CONTROLLED DOCUMENT. | | DMN | TIM XUE | 18AUG2011 |
| DIMENSIONS: | | CHK | C. WANG | 18AUG2011 |
| mm | | APPD | C. WANG | 18AUG2011 |
| TOLERANCES UNLESS OTHERWISE SPECIFIED: | | PRODUCT SPEC | NAME | |
| 0 PLC | ±0.1 | 108-2364 | SFP+ 1X2 CAGE ASSEMBLY | |
| 1 PLC | ±0.1 | APPLICATION SPEC | PRESS FIT, EXTERNAL EMI SPRINGS | |
| 2 PLC | ±0.1 | 114-13120 | SIZE | CAGE CODE DRAWING NO |
| 3 PLC | ±0.1 | WEIGHT | A1 | 00779 |
| 4 PLC | ±0.1 | CUSTOMER DRAWING | SCALE 6:1 SHEET 4 OF 4 REV A | |
| ANGLES | ±1° | RESTRICTED TO | | |