

# FSMJ Series *Micro Miniature Vertical Pushbuttons* with Tactile Feel & ESD Grounding Terminal

## MATERIAL SPECIFICATIONS:

Contacts .....Copper alloy, silver plate  
Case.....Polyamide  
Actuator Button .....Polyacetal Resin  
Frame .....Copper alloy, tin plate  
Terminals .....Copper alloy, silver plate

## TYPICAL PERFORMANCE CHARACTERISTICS:

Contact Rating .....50 mA @ 12 VDC  
Initial Contact Resistance.....100 Milliohms max.  
Insulation Resistance .....100 Megohms min. @ 100 VDC  
Dielectric Strength .....250 VAC  
Actuation Force .....160 Grams AVG (STD.)  
Actuator Travel......012" (0,3)  
Electrostatic Discharge  
w/ESD Ground Terminal .....5Kv w/no discharge  
Life Expectancy .....100,000 Cycles

## ENVIRONMENTAL SPECIFICATIONS

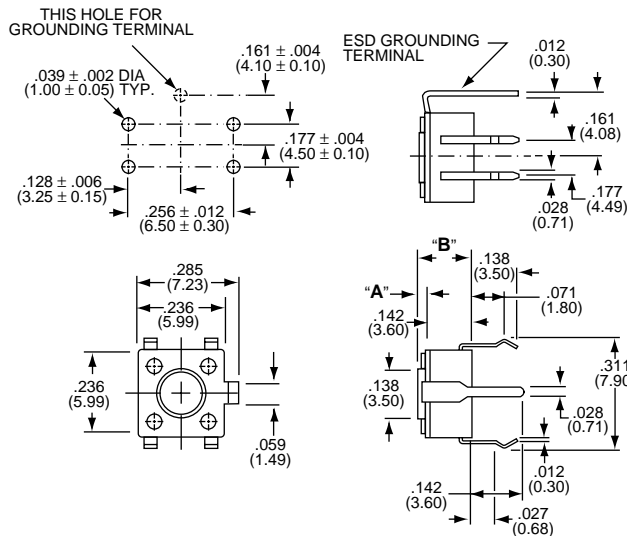
Operating Temperature.....-4°F to +158°F (-20°C to +70°C)  
Storage Temperature.....-22°F to +176°F (-30°C to +80°C)  
Solder Heat Resistance.....See Page M6

6 x 6 mm

D



FSM1J  
WITH  
ESD  
TERMINAL

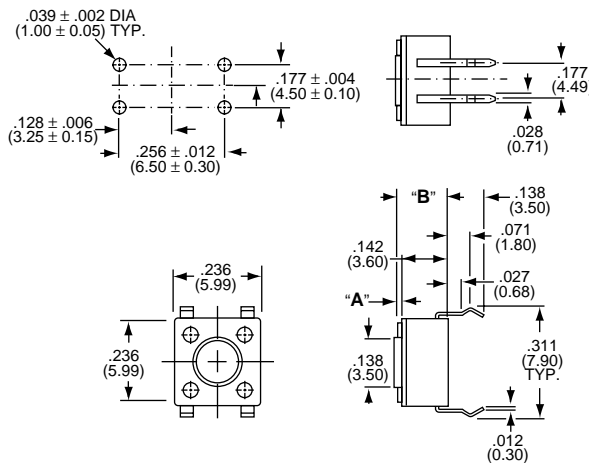


Part Number W/O ESD Terminal	Dim. A	Dim B	Button Color
FSM 1J	.028" (0,70)	.169" (4,30)	Black
FSM 3J	.055" (1,40)	.196" (5,00)	Black
FSM 5J	.134" (3,40)	.276" (7,00)	Blue
FSM 7J	.232" (5,90)	.374" (9,50)	Black
FSM 9J	.146" (3,70)	.287" (7,30)	Ivory
FSM 11J	.173" (4,40)	.315" (8,00)	White
FSM 13J	.370" (9,40)	.512" (13,00)	Black
FSM 15J	.527" (13,40)	.669" (17,00)	Black
FSM 17J	.193" (4,90)	.335" (8,51)	Black

6 x 6 mm

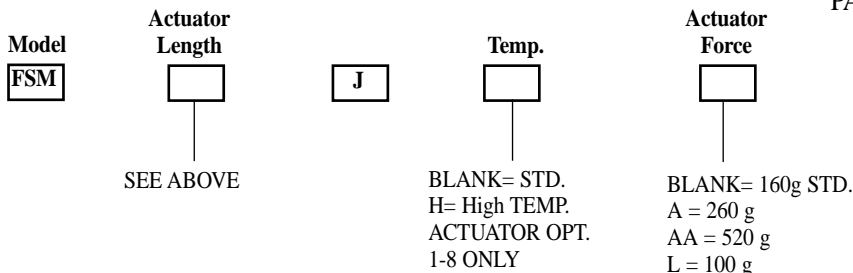


FSM2J  
WITHOUT  
ESD  
TERMINAL



Part Number W/O ESD Terminal	Dim. A	Dim B	Button Color
FSM 2J	.028" (0,70)	.169" (4,30)	Black
FSM 4J	.055" (1,40)	.196" (5,00)	Black
FSM 6J	.134" (3,40)	.276" (7,00)	Blue
FSM 8J	.232" (5,90)	.374" (9,50)	Black
FSM 10J	.146" (3,70)	.287" (7,30)	Ivory
FSM 12J	.173" (4,40)	.315" (8,00)	White
FSM 14J	.370" (9,40)	.512" (13,00)	Black
FSM 16J	.527" (13,40)	.669" (17,00)	Black
FSM 18J	.193" (4,90)	.335" (8,51)	Black

## PART NUMBERING SEQUENCE



**Thomas & Betts**

Quality & Innovation From **AUGAT** Name Brand Products

D4

Thomas & Betts  
8155 T&B Blvd.  
Memphis, TN 38125  
(901) 252-5000 FAX (901) 252-1380