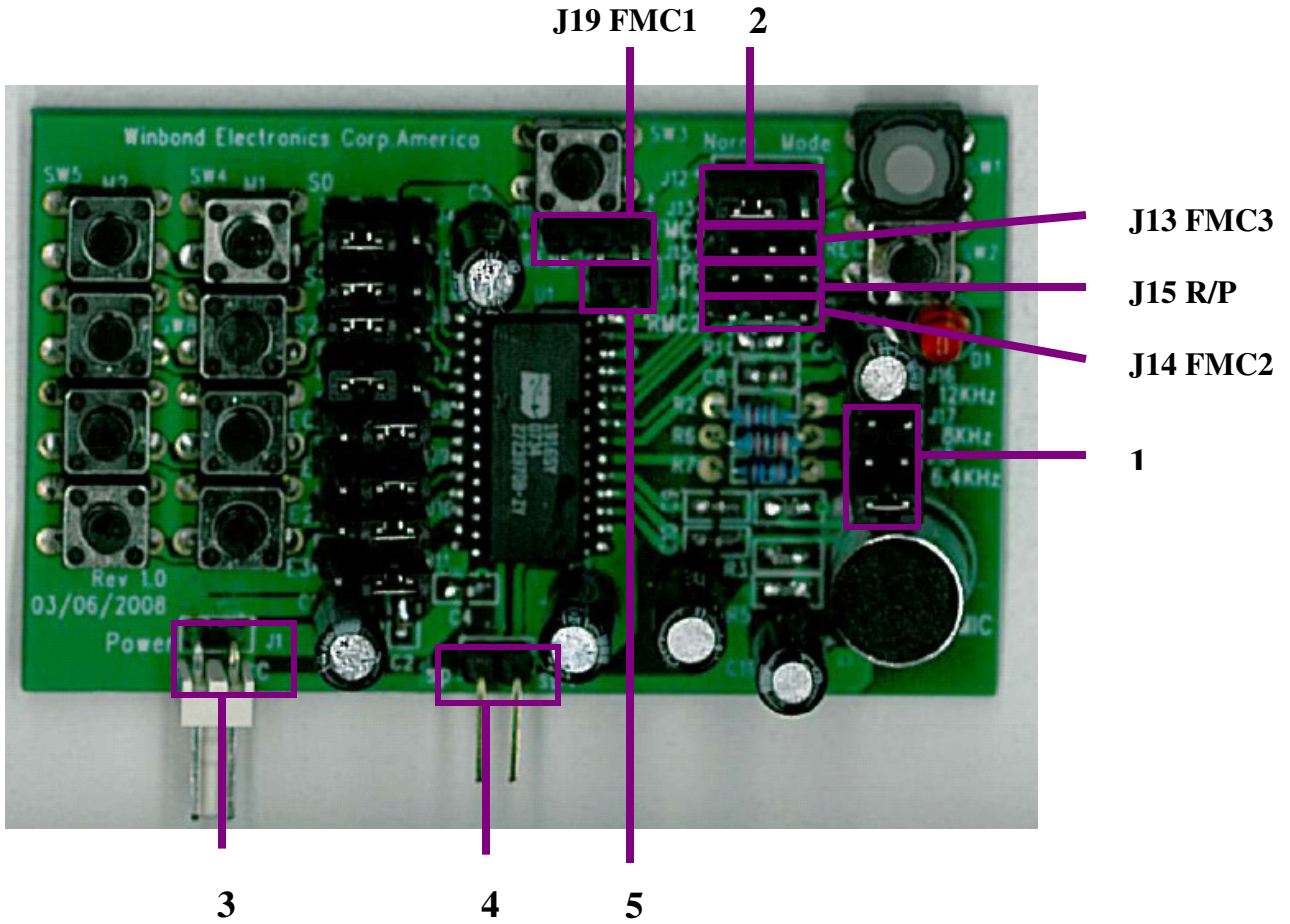


ISD-COB19xx

User's Manual

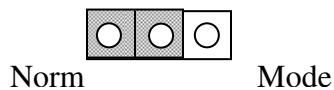


Hardware Configuration

1. Frequency selection: J16, J17 and J18. Use jumper to select desired sampling frequency.

	J16	J17	J18
Sampling Frequency	12 kHz	8 kHz	6.4 kHz
Rosc	53.3 K Ω	80 K Ω	100 K Ω

2. Mode setting: use J12 to select /Mode or Norm mode operation. Example below illustrated Norm mode setting that the two left pins are shorted. After a new condition is selected on **NORM** / **MODE**, the power must be cycled to enable new setting. User can perform the following to recycle the power: remove power from the board -> short J12 momentary -> re-apply the power.



(a) Mode: direct trigger mode

- a. SW4 ~ SW7, SW9~SW12 to play/record message.
- b. J15: set SW4~SW7, SW9~SW12 to perform play or record.
- c. J19 (FMC1), J14 (FMC2), J13 (FMC3): setup various fixed-message configurations.
- d. J4, J5, J6, J7, J8, J9, J10, J11 should be in open (no jumper) positions.

(b) Norm: address trigger mode

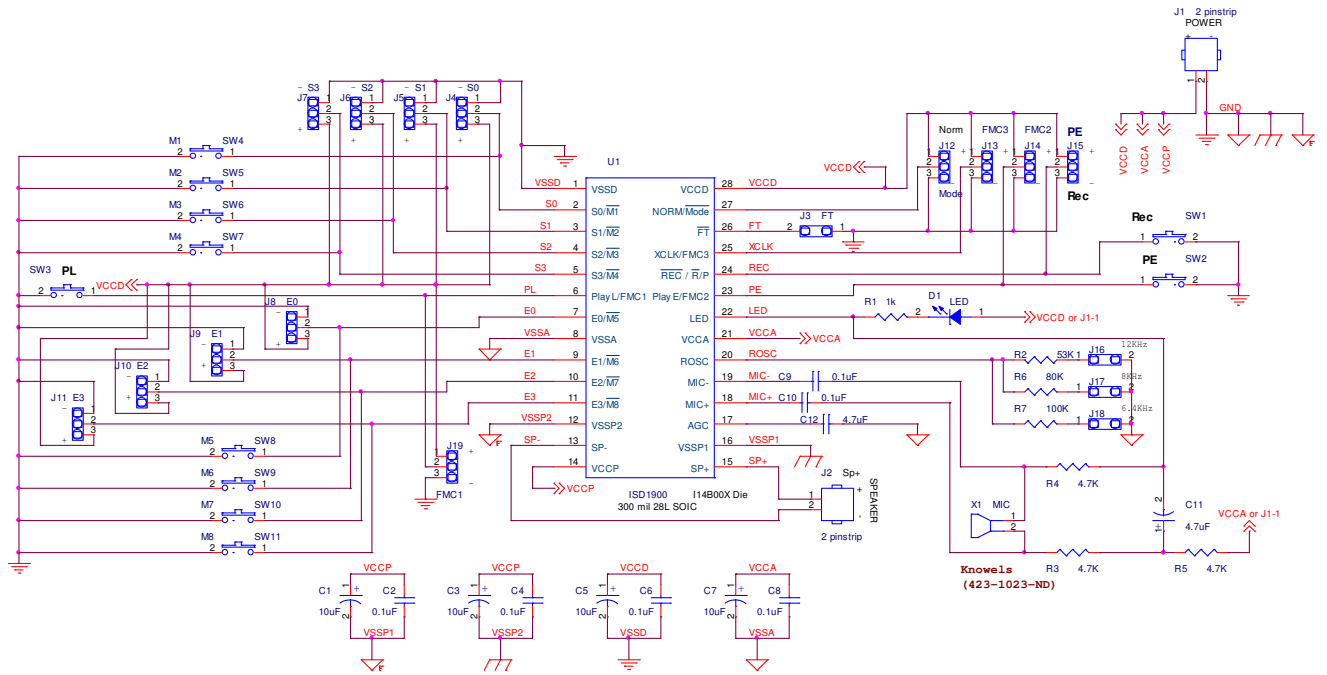
- a. J4 (S0), J5 (S1), J6 (S2), J7 (S3): start address
- b. J8 (M0), J9 (M1), J10 (M2), J11 (M3): end address
- c. SW1 (Record): level-hold (after 1 sec holding) or edge-trigger (toggle on-off), low active, recording from start to end addresses.
- d. SW2 (PlayE): low active input, edge-trigger playback from start to end addresses & toggle on-off.
- e. SW3 (PlayL): low active input, Level-hold playback start to end addresses. Holding PlayL constantly Low will perform looping playback function from start to end addresses.
- f. J13, J14, J15, J19 should be in open (no jumper) positions.

3. J1: Power connector

4. J2: Speaker connector

5. J3 Feed-Through: Low active input, Level-hold. When Feed-Through is selected (J3 shorted), the MIC+ input is configured to a single-ended input with 1Vp-p maximum input amplitude and feed-through to the speaker outputs.

SCHEMATIC:



For any technical details of the ISD1900 series, please refer to the datasheet.