

## Electrical / Environmental

- Operating Temperature Range -40°C to +125°C
- Ambient Temperature, Maximum 85°C

**NEW**

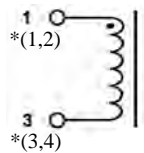
**RoHS  
Compliant**

# HM17A

Vertical Mount Inductors



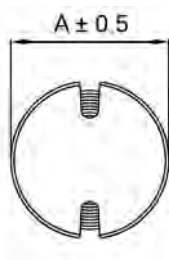
## Schematic



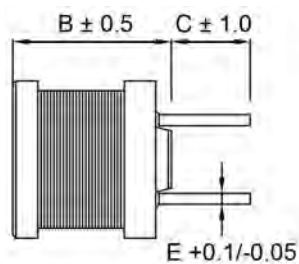
Note : Part number ends with \* is 4 terminal hook up

## Outline Dimensions (mm)

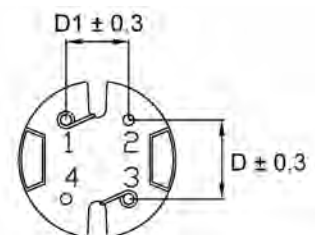
Top View



Side View



Bottom View



Case Size	A	B	C	D	D1	E
106	10.0	6.0	3.5	5.0	4.0	0.7
108	10.0	8.0	3.5	5.0	4.0	0.7
1010	10.0	10.0	3.5	5.0	4.0	0.7

## Packaging

**Standard:** Boxes

Capacity = 100 Units

Carton

Capacity = 6000 Units

Last Updated : 12 May 2011

## Specifications @ 25°C

Part Number	Inductance			I <sub>rated</sub> <sup>(2)</sup> (Adc)	DCR (Ω) Max.	Part Number	Inductance			I <sub>rated</sub> <sup>(2)</sup> (Adc)	DCR (Ω) Max.
	Lo (μH)	Tol. (1) (%)	Test Freq. (kHz)				Lo (μH)	Tol. (1) (%)	Test Freq. (kHz)		
HM17A-106100LF	10	± 20%	100	3.60	0.040	HM17A-108121LF	120	± 10%	1	1.30	0.240
HM17A-106120LF	12	± 20%	100	3.30	0.044	HM17A-108151LF	150	± 10%	1	1.20	0.320
HM17A-106150LF	15	± 20%	100	2.90	0.058	HM17A-108181LF	180	± 10%	1	1.10	0.350
HM17A-106180LF	18	± 20%	100	2.70	0.064	HM17A-108221LF	220	± 10%	1	0.96	0.450
HM17A-106220LF	22	± 20%	100	2.40	0.088	HM17A-108271LF	270	± 10%	1	0.87	0.610
HM17A-106270LF	27	± 20%	100	2.20	0.100	HM17A-108331LF	330	± 10%	1	0.79	0.690
HM17A-106330LF	33	± 20%	100	2.00	0.110	HM17A-108391LF	390	± 10%	1	0.72	0.780
HM17A-106390LF	39	± 20%	100	1.80	0.140	HM17A-108471LF	470	± 10%	1	0.66	1.000
HM17A-106470LF	47	± 20%	100	1.70	0.160	HM17A-108561LF	560	± 10%	1	0.60	1.200
HM17A-106560LF	56	± 20%	100	1.50	0.190	HM17A-108681LF	680	± 10%	1	0.55	1.400
HM17A-106680LF	68	± 20%	100	1.40	0.220	HM17A-108821LF	820	± 10%	1	0.50	1.800
HM17A-106820LF	82	± 20%	100	1.30	0.290	HM17A-108102LF	1000	± 10%	1	0.45	2.100
HM17A-106101LF	100	± 10%	1	1.30	0.320	HM17A-1010100LF*	10	± 20%	100	5.30	0.022
HM17A-106121LF	120	± 10%	1	1.20	0.380	HM17A-1010120LF*	12	± 20%	100	4.90	0.023
HM17A-106151LF	150	± 10%	1	1.00	0.500	HM17A-1010150LF*	15	± 20%	100	4.40	0.026
HM17A-106181LF	180	± 10%	1	0.84	0.560	HM17A-1010180LF*	18	± 20%	100	4.00	0.033
HM17A-106221LF	220	± 10%	1	0.76	0.780	HM17A-1010220LF*	22	± 20%	100	3.60	0.037
HM17A-106271LF	270	± 10%	1	0.69	0.920	HM17A-1010270LF*	27	± 20%	100	3.30	0.048
HM17A-106331LF	330	± 10%	1	0.62	1.100	HM17A-1010330LF*	33	± 20%	100	2.90	0.055
HM17A-106391LF	390	± 10%	1	0.57	1.300	HM17A-1010390LF	39	± 20%	100	2.70	0.073
HM17A-106471LF	470	± 10%	1	0.52	1.500	HM17A-1010470LF	47	± 20%	100	2.50	0.083
HM17A-106561LF	560	± 10%	1	0.48	1.900	HM17A-1010560LF	56	± 20%	100	2.30	0.092
HM17A-106681LF	680	± 10%	1	0.43	2.200	HM17A-1010680LF	68	± 20%	100	2.10	0.120
HM17A-106821LF	820	± 10%	1	0.40	2.600	HM17A-1010820LF	82	± 20%	100	1.90	0.140
HM17A-106102LF	1000	± 10%	1	0.36	3.200	HM17A-1010101LF	100	± 10%	1	1.70	0.160
HM17A-108100LF*	10	± 20%	100	4.50	0.027	HM17A-1010121LF	120	± 10%	1	1.50	0.200
HM17A-108120LF*	12	± 20%	100	4.10	0.031	HM17A-1010151LF	150	± 10%	1	1.40	0.230
HM17A-108150LF*	15	± 20%	100	3.70	0.036	HM17A-1010181LF	180	± 10%	1	1.30	0.310
HM17A-108180LF	18	± 20%	100	3.40	0.049	HM17A-1010221LF	220	± 10%	1	1.10	0.340
HM17A-108220LF	22	± 20%	100	3.10	0.055	HM17A-1010271LF	270	± 10%	1	1.00	0.400
HM17A-108270LF	27	± 20%	100	2.80	0.062	HM17A-1010331LF	330	± 10%	1	0.93	0.520
HM17A-108330LF	33	± 20%	100	2.50	0.078	HM17A-1010391LF	390	± 10%	1	0.86	0.650
HM17A-108390LF	39	± 20%	100	2.30	0.087	HM17A-1010471LF	470	± 10%	1	0.78	0.710
HM17A-108470LF	47	± 20%	100	2.10	0.099	HM17A-1010561LF	560	± 10%	1	0.71	1.000
HM17A-108560LF	56	± 20%	100	1.90	0.130	HM17A-1010681LF	680	± 10%	1	0.65	1.100
HM17A-108680LF	68	± 20%	100	1.70	0.140	HM17A-1010821LF	820	± 10%	1	0.59	1.300
HM17A-108820LF	82	± 20%	100	1.60	0.160	HM17A-1010102LF	1000	± 10%	1	0.53	1.700
HM17A-108101LF	100	± 10%	1	1.40	0.210						

Notes: (1) Tolerance : 10 ~ 82μH ± 20% (M), 100 ~ 1000 μH ± 10% (K).

(2) I<sub>rated</sub> is the DC current at which inductance will be decreased by approximately 10% from its initial (zero DC) value.

## Ordering Information

