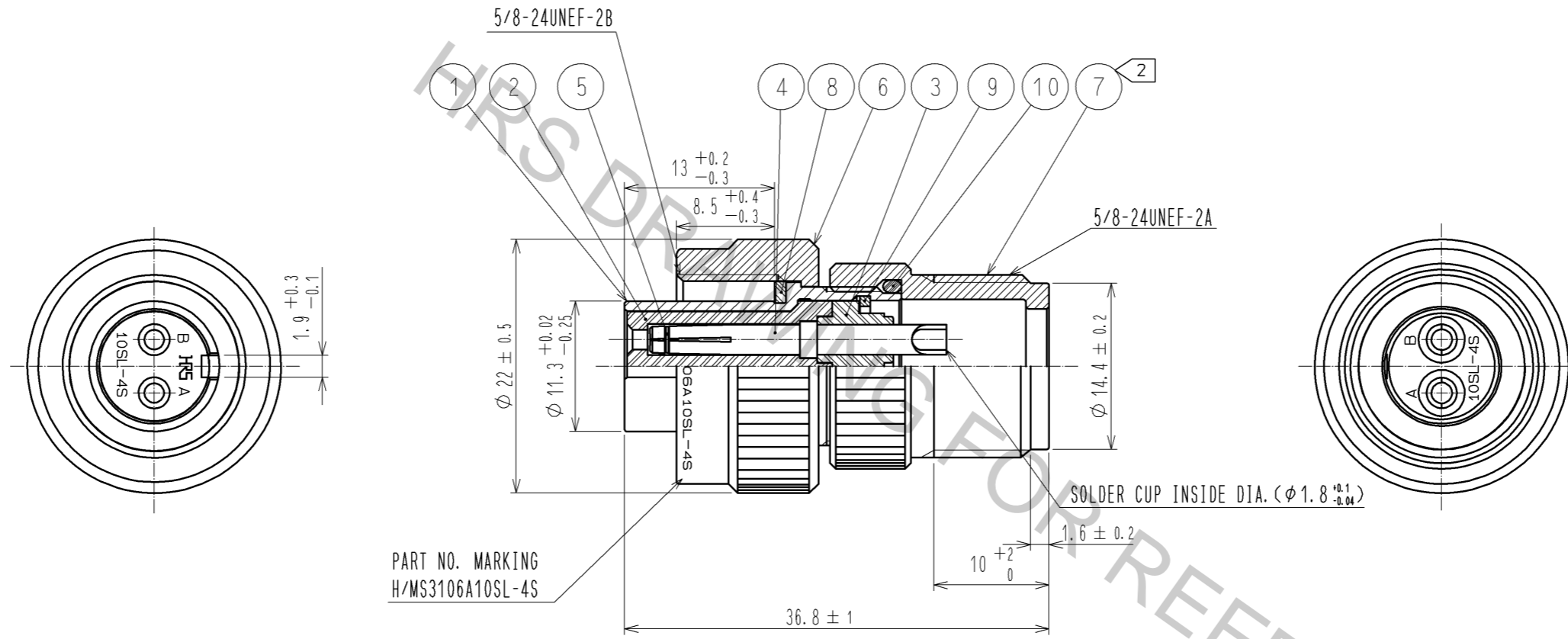


Aug.1.2018 Copyright 2018 HIROSE ELECTRIC CO., LTD. All Rights Reserved.
 In case that the application demands a high level of reliability, such as automotive,
 please contact a company representative for further information.



PART NO. MARKING
 H/MS3106A10SL-4S

NOTES 1 ONE EXAMPLE OF THE ROTATION OF REF. NO. ⑥ TO REF. NO. ① IS SHOWN.
 2 RECOMMENDED TIGHTENING TORQUE OF REF. NO. ⑦ : 1 TO 1.5 N · m

NO.	MATERIAL	FINISH	REMARKS	NO.	MATERIAL	FINISH	REMARKS
5	STAINLESS STEEL			10	SILICONE RUBBER	(BLACK)	
4	PHOSPHOR BRONZE	SILVER PLATING	4 μm min.	9	PHOSPHOR BRONZE	NICKEL PLATING	
3	PBT	(BLACK)	UL94V-0	8	SILICONE RUBBER	(BLACK)	
2	PBT	(BLACK)	UL94V-0	7	ALUMINUM ALLOY	BLACK CHROMATE TREATMENT (TRIVALENT CHROMIUM)	
1	ALUMINUM ALLOY	BLACK CHROMATE TREATMENT (TRIVALENT CHROMIUM)		6	ALUMINUM ALLOY	BLACK CHROMATE TREATMENT (TRIVALENT CHROMIUM)	

UNITS	SCALE	COUNT	DESCRIPTION OF REVISIONS	DESIGNED	CHECKED	DATE
mm	2 : 1	△				
APPROVED : SU. OBARA			10.10.12	DRAWING NO. EDC3-044047-73		
CHECKED : HY. KISHI			10.10.12	PART NO. H/MS3106A10SL-4S(73)		
DESIGNED : TH. KAMEYA			10.10.12	CODE NO. CL120-0601-3-73		
DRAWN : YS. SAKODA			10.10.07	△ 1/1		