

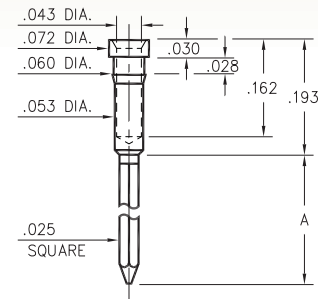
MALE PCB PINS

WRAPOST TERMINALS

1030 → 1032

103X-X-05-XX-00-00-01-0

Press-fit in .057 mounting hole

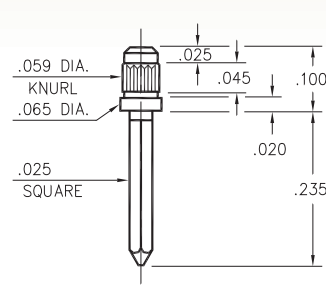


Basic Part Number	# of Wraps	Length A
1032-1	1	.260
1031-2	2	.360
1030-3	3	.500

1216

1216-0-05-XX-00-00-01-0

Press-fit in .056 mounting hole

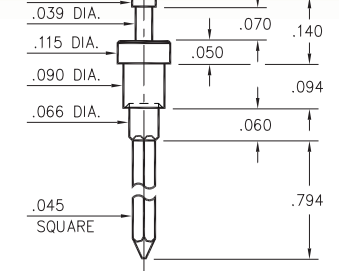


1095

1095-0-05-XX-00-00-01-0

Swage mount in .094 hole

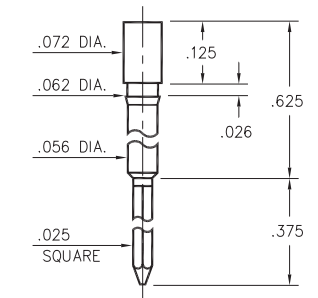
For a .062 thick board



1214

1214-0-05-XX-00-00-01-0

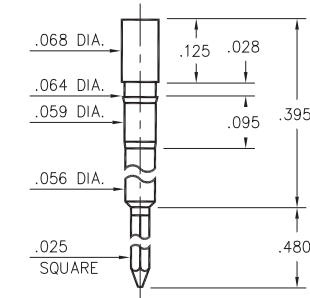
Press-fit in .059 mounting hole



1212

1212-0-05-XX-00-00-01-0

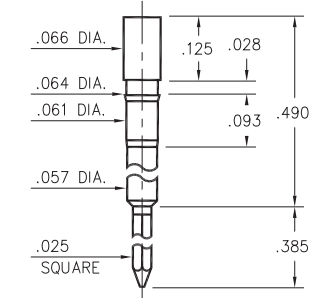
Press-fit in .061 mounting hole



1213

1213-0-05-XX-00-00-01-0

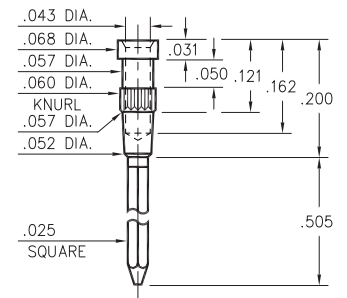
Press-fit in .061 mounting hole



0318

0318-3-05-XX-00-00-01-0

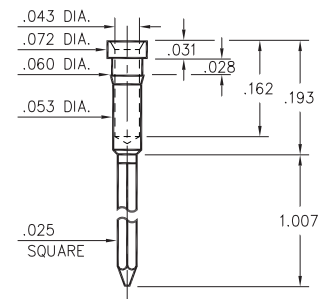
Press-fit in .057 mounting hole



1302

1302-0-05-XX-00-00-01-0

Press-fit in .057 mounting hole

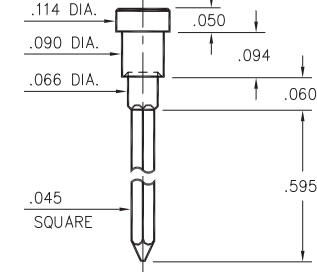


1097

1097-0-05-XX-00-00-01-0

Swage mount in .094 hole

For a .062 thick board



SPECIFICATIONS:

Pin Material: Brass Alloy 360, 1/2 Hard
(Except swage pins which are annealed)

Dimensions: Inches

Tolerances On: Lengths: ± .005
Diameters: ± .002
Angles: ± 2°



ORDER CODE: XXXX - X - 05 - XX - 00 - 00 - 01 - 0

BASIC PART #

SPECIFY PIN FINISH:

- 01 200 μ" TIN/LEAD OVER NICKEL
- ◆ 80 200 μ" TIN OVER NICKEL (RoHS)
- ◆ 15 10 μ" GOLD OVER NICKEL (RoHS)
- ◆ 21 20 μ" GOLD OVER NICKEL (RoHS)

