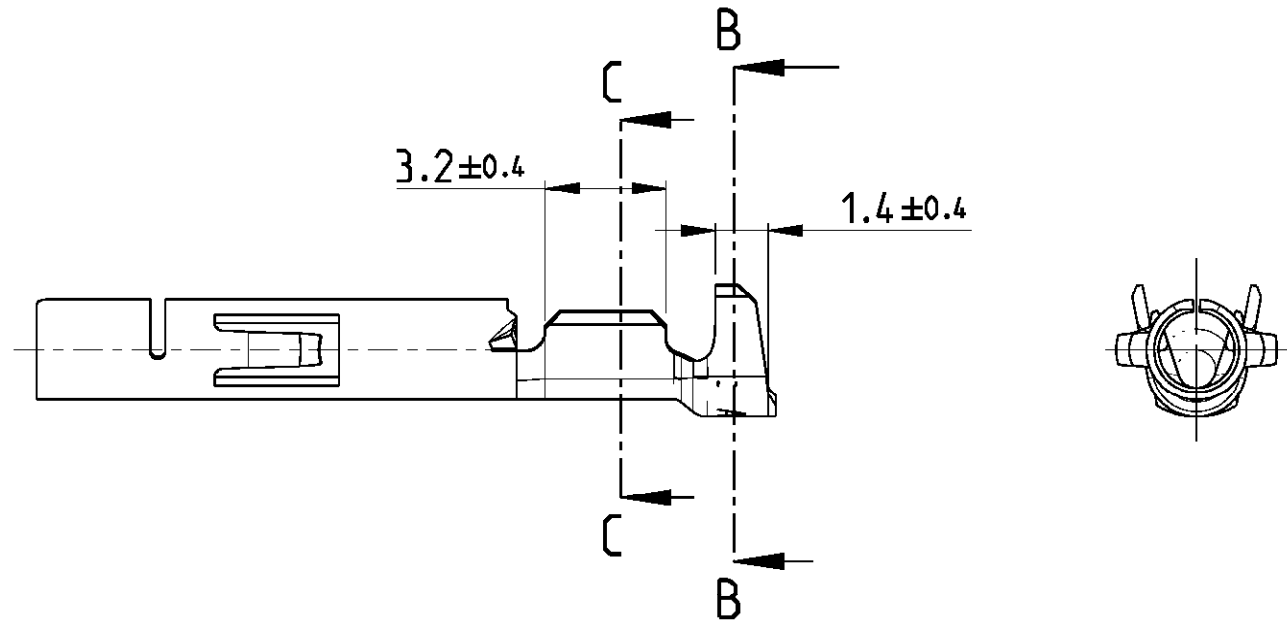
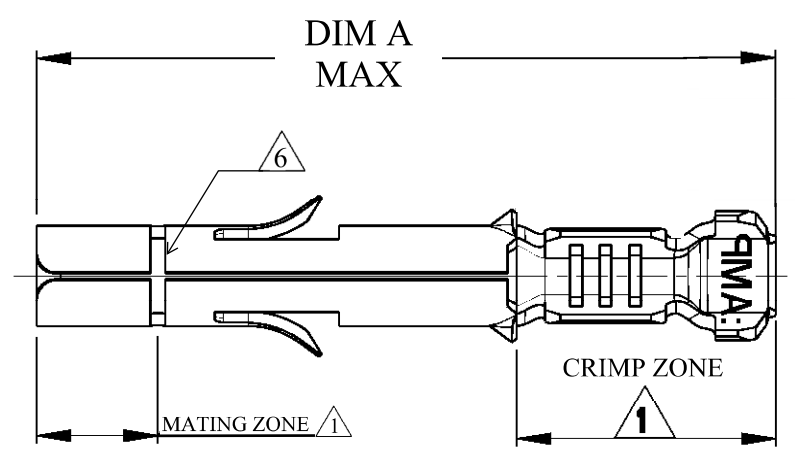


THIS DRAWING IS UNPUBLISHED
 RELEASED FOR PUBLICATION
 © COPYRIGHT - BY - ALL RIGHTS RESERVED.

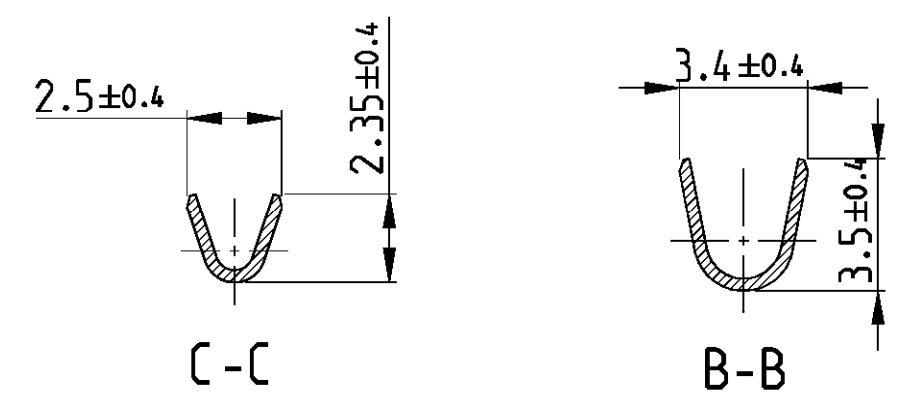
LOC	DIST	REVISIONS					
		P	LTR	DESCRIPTION	DATE	DWN	APVD
IR	-		G5	REVISED PER ECR-16-008286	27JUN2016	BW	RS



- △ 1 Au IN MATING ZONE, Sn IN CRIMP ZONE, Ni ON ENTIRE BODY OF TERMINAL.
- 3 INSULATION WIRE RANGE: Ø1.0-2.5mm.
- △ 6 SLOT IS ONLY AVAILABLE FOR 926895-1 & 926895-3.



926895-1 & -3 SHOWN



OBSOLETE	19.56	△ 1	BRASS	926895-7
	19.35	△ 1	PHOSPHOR BRONZE	926895-6
OBSOLETE	19.35	PRE-TIN PLATED	PHOSPHOR BRONZE	△ 6 926895-3
	19.35		BRASS	926895-2
	19.35	PRE-TIN PLATED	BRASS	△ 6 926895-1
	DIM A	FINISH	MATERIAL	PART NO.
		COLOUR		

DIMENSIONS: mm		TOLERANCES UNLESS OTHERWISE SPECIFIED: 0 PLZ ±- 1 P/C ±- 2 L/C ±- 3 P/C ±- 4 P/LC ±- ANGLES -		DWN J.SALO 10NOV2008 CHK R.SOLE 10NOV2008 APVD P.F.GRASSANO 10NOV2008 PRODUCT SPEC 108-1031 APPLICATION SPEC 114-1010 WEIGHT -					
MATERIAL SEE TABLE		FINISH SEE TABLE		NAME UNIVERSAL M-N-L SOCKET 0.2-0.8 SQ.MM WIRE RANGE		SIZE	CAGE CODE	DRAWING NO	RESTRICTED TO
CUSTOMER DRAWING				SCALE	5:1	SHEET	1 OF 1	REV	G5