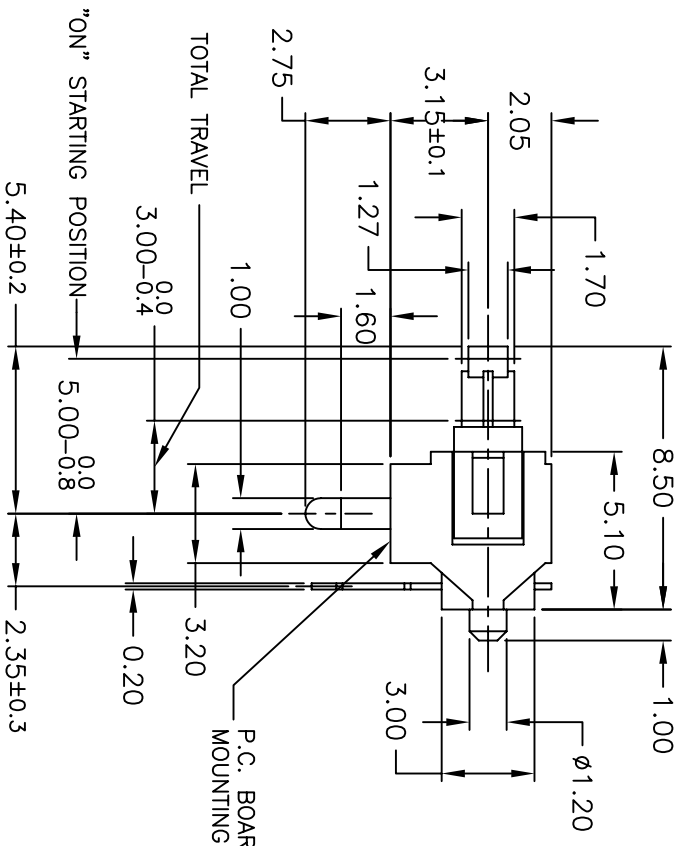
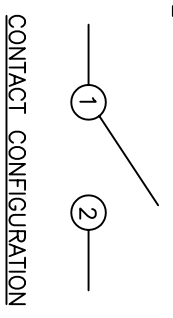
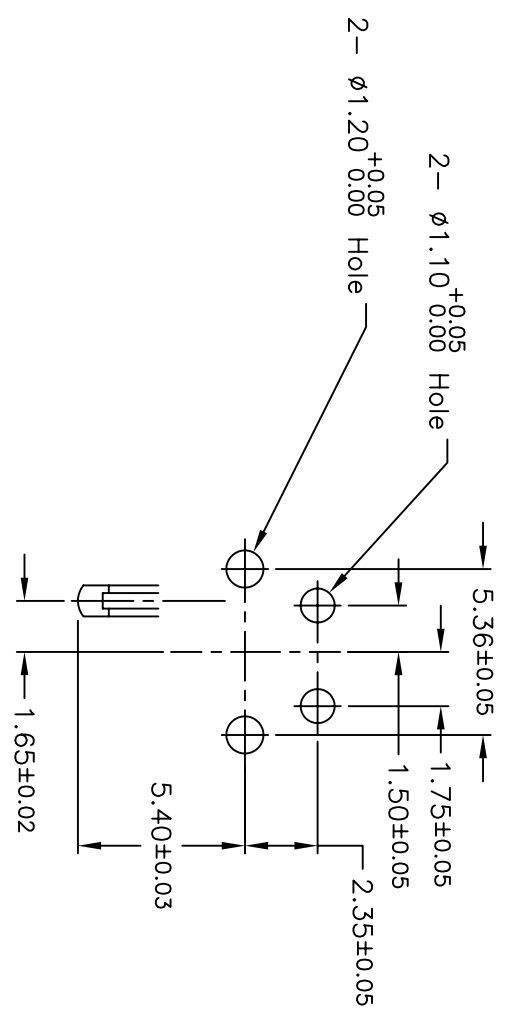


- NOTES:
1. ALL DIMENSIONS IN MM
 2. TERM. NOS. FOR REF. ONLY
 3. OPERATING FORCE: 36 gf. max.
 4. RATING: 0.1A, @30V DC (Resistive load)
 5. INITIAL CONTACT RESISTANCE: 1 ohm max.
 6. OPERATING LIFE WITHOUT LOAD: 50,000 Cycles Min.



RECOMMEND P.C.B. LAYOUT



A		RELEASED FOR PRODUCTION		TITLE		TD 1105B		REV		A					
REV.		DESCRIPTION		DATE		SCALE		DATE		DR					
						4:1		9/1/98		MM					
										DWG					
										P200016					
										REV					
										A					
<p>THE INFORMATION CONTAINED IN THIS DOCUMENT IS PROPRIETARY TO E-SWITCH AND IS NOT TO BE COPIED OR TRANSFERRED</p>															
<p>TOLERANCES</p> <table border="1"> <tr> <td>±0.4</td> <td>±0.25</td> </tr> <tr> <td>0.0</td> <td>0.00</td> </tr> </table>												±0.4	±0.25	0.0	0.00
±0.4	±0.25														
0.0	0.00														
<p>E-SWITCH®</p>															