

MA SERIES - MICRO-LIMIT SWITCHES



FEATURES

- **Ratings: 16 Amps 250 VAC (resistive load). 4 Amps 250 VAC (motor load) or 3 Amps 250 VAC (resistive load). 0.1 Amps 250 VAC (motor load).**
- **Single pole CO (change-over or alternate action), NC (normally closed momentary) and NO (normally open momentary) configurations.**
- **Close tolerance switching action with long life (10,000,000 mechanical cycles min.).**
- **Pin plunger, hinge lever or roller lever actuator options.**

MATERIALS

Contacts:	Stationary: Nicker silver Shorting: Beryllium copper
Actuator:	FS 161 (UL94V-O)
Case & cover:	PBT (UL94V-O)
Terminals:	Silver plated copper/zinc

AGENCY RECOGNITION



Approval pending.

SPECIFICATIONS

Operating force:	≤ 12.59 oz. (343 grams) approx. for 16 Amp models ≤ 0.72 oz. (20 grams) approx. for 3 Amp models
Pretravel:	≤ .047" (1.2mm)
Overtravel:	≥ .059" (1.5mm) min.
Movement differential:	≤ .016" (0.4mm)
Free position:	≤ .649" (16.5mm)
Operating position:	.578" ± .020" (14.7mm ± 0.5mm)
Operating temperature:	-40°C to +85°C
Contact gap:	less than .118" (3mm)
Tracking resistance:	> PTI 175

MA SERIES - MICRO-LIMIT SWITCHES

ORDER FORMAT

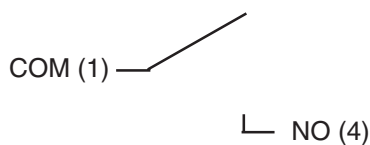
M A A 6 B

Series	Circuit & quick-connect terminals	Switch rating	Actuator style
MA	A Normally open (standard) .031 x .248" (0.8x6.3mm) B Normally closed (standard) .031 x .248" (0.8x6.3mm) C Change-over (standard) .031 x .248" (0.8x6.3mm) D Normally open, .031 x .248" (0.8x6.3mm), spacing .197" (5mm) E Normally closed, .031 x .248" (0.8x6.3mm), spacing .197" (5mm) F Change-over, .031 x .248" (0.8x6.3mm), spacing .197" (5mm) G Normally open, .020 x .189" (0.5x4.8mm) H Normally closed, .020 x .189" (0.5x4.8mm) I Change-over, .020 x .189" (0.5x4.8mm) J Normally open, .031 x .189" (0.8x4.8mm) K Normally closed, .031 x .189" (0.8x4.8mm) L Change-over, .031 x .189" (0.8x4.8mm)	6 16(4)A 250 VAC 7 3(0.1)A 250 VAC	A Pin actuator B Hinge actuator C Roller actuator

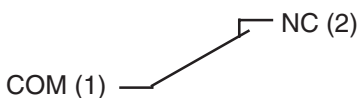
STANDARD MODELS

Quick-connect terminal		.031x.248" (0.8x6.3mm)		.031x.248" (0.8x6.3mm) pin spacing - .197"(5mm)		.020x.189" (0.5x4.8mm)		.031x.189" (0.8x4.8mm)	
Switching capacity		16(4)A	3(0.1)A	16(4)A	16(4)A	3(0.1)A	16(4)A	3(0.1)A	
Pin plunger	NO	MAA6A	MAA7A	MAD6A	MAG6A	MAG7A	MAJ6A	MAJ7A	
	NC	MAB6A	MAB7A	MAE6A	MAH6A	MAH7A	MAK6A	MAK7A	
	CO	MAC6A	MAC7A	MAF6A	MAI6A	MAI7A	MAL6A	MAL7A	
Hinge lever	NO	MAA6B	-	MAD6B	MAG6B	-	MAJ6B	-	
	NC	MAB6B	-	MAE6B	MAH6B	-	MAK6B	-	
	CO	MAC6B	-	MAF6B	MAI6B	-	MAL6B	-	
Roller lever	NO	MAA6C	-	MAD6C	MAG6C	-	MAJ6C	-	
	NC	MAB6C	-	MAE6C	MAH6C	-	MAK6C	-	
	CO	MAC6C	-	MAF6C	MAI6C	-	MAL6C	-	

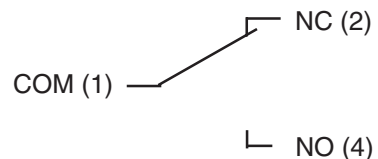
NO =
NORMALLY OPEN:



NC =
NORMALLY CLOSED:



CO =
CHANGE-OVER:



SPECIFICATIONS SUBJECT TO CHANGE WITHOUT NOTICE

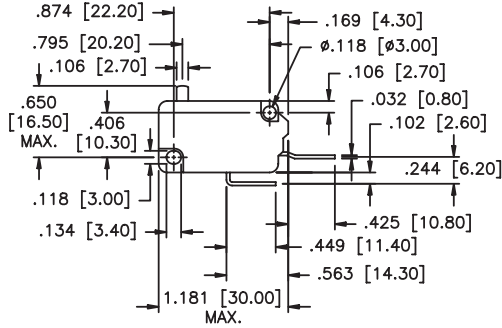
H

MA SERIES - MICRO-LIMIT SWITCHES

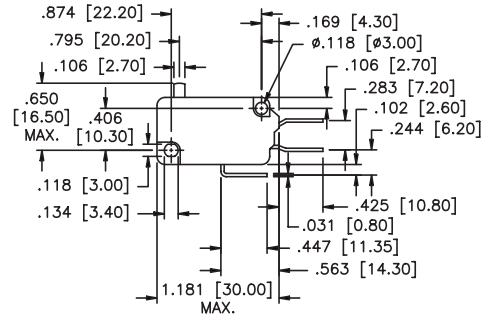
MECHANICAL OUTLINES

Models with quick-connect terminal .031x.248" (0.8x6.3mm)

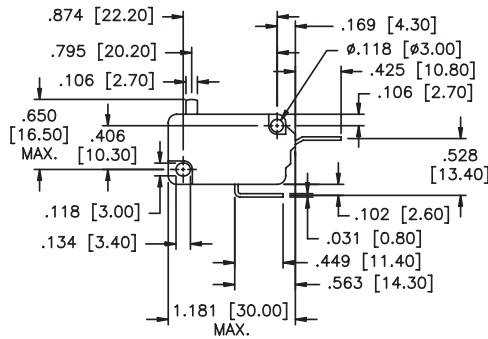
SPECIFICATIONS SUBJECT TO CHANGE WITHOUT NOTICE



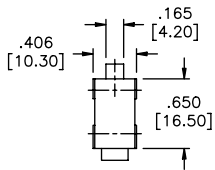
Normally open



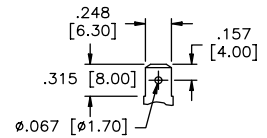
Change-over



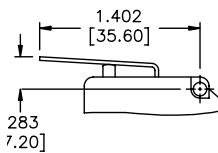
Normally closed



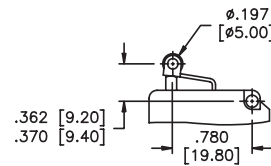
Side view



Quick-connect terminal



Hinge lever



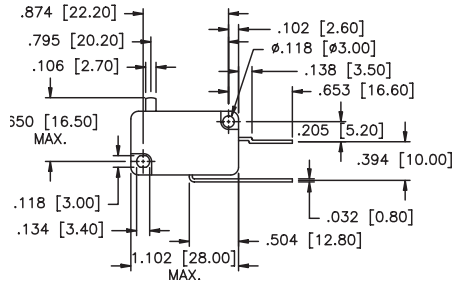
Roller lever

H

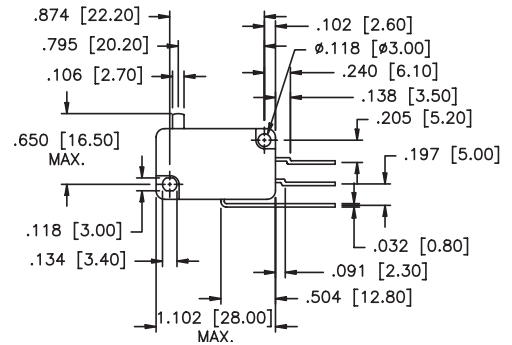
MA SERIES - MICRO-LIMIT SWITCHES

MECHANICAL OUTLINES

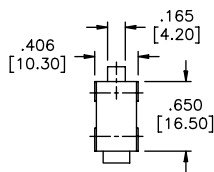
Models with quick-connect terminal .031x.248" (0.8x6.3mm) & pin spacing .197" (5mm)



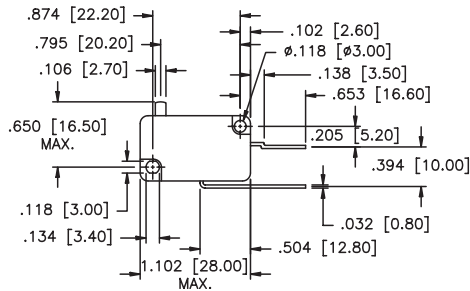
Normally open



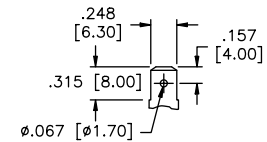
Change-over



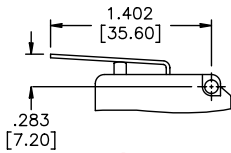
Side view



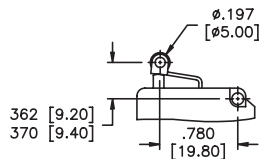
Normally closed



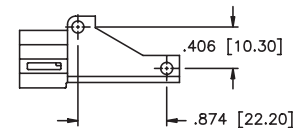
Quick-connect terminal



Hinge lever



Roller lever



Adaptor element

SPECIFICATIONS SUBJECT TO CHANGE WITHOUT NOTICE

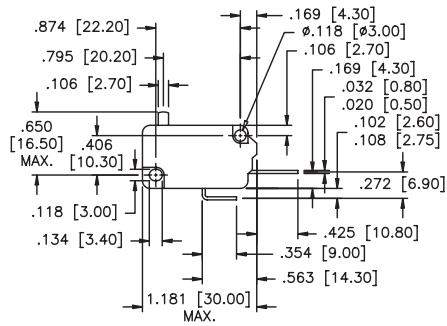
H

MA SERIES - MICRO-LIMIT SWITCHES

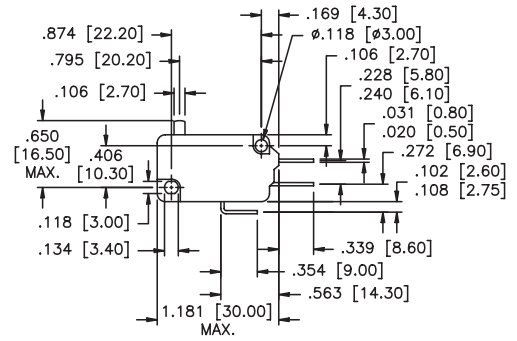
MECHANICAL OUTLINES

Models with quick-connect terminal .020 or .031x.248" (0.8 or 0.8x6.3mm)

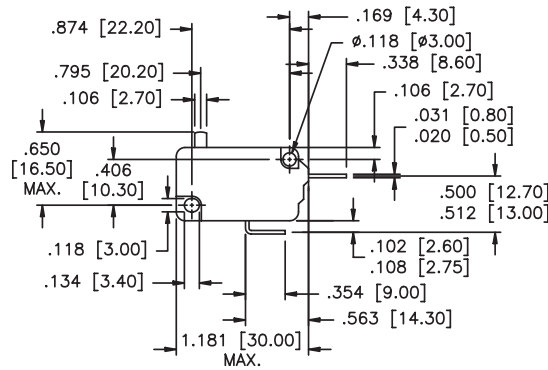
SPECIFICATIONS SUBJECT TO CHANGE WITHOUT NOTICE



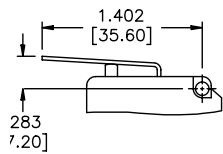
Normally open



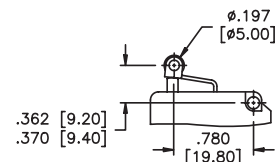
Change-over



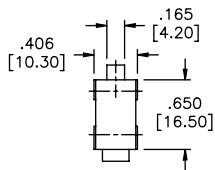
Normally closed



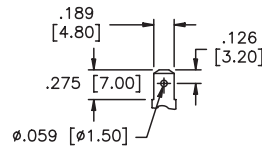
Hinge lever



Roller lever



Side view



Quick connect terminal

H