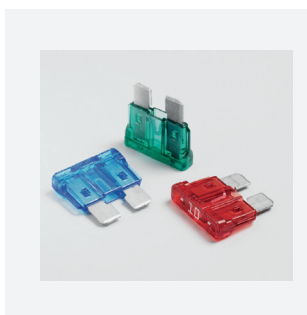




FUSE AND
FUSEHOLDER
PRODUCT GUIDE



COMMERCIAL VEHICLE PRODUCTS

F-1304



Expertise Applied | Answers Delivered

LITTELFUSE PACKAGING

Carton

Carton. The outer corrugated cardboard box that holds several inner packs, or bulk fuses (no inner packs).

Inner Pack

A small chipboard box containing several blister packs or pillboxes.

Blister Pack

A retail package containing one or several identical products, such as fuses, or it may contain an assortment of fuses. BPs are designed to fit on a peg-hook. The abbreviation BP includes bubble packs and clamshell packs.

Pillbox

A small plastic box containing fuses. Pillboxes are snap-shut resealable.

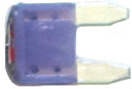


KNOW YOUR FUSES



Low Profile MINI® Blade Fuse

For vehicle voltages up to 58V. Amperages 2A to 30A. Same performance as MINI, but with a smaller body height.



MINI® Blade Fuse

Amperages 2A to 30A

A type that's rapidly becoming the standard for electrical protection, with an exceptionally wide operating temperature range of -40°F to 250°F. The big advantage of MINI is that you can get more fuses into a small fusebox.



ATO® Blade Fuse

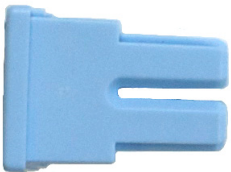
The very popular two-blade fuse originated and patented by Littelfuse in 1976. Amperages 1A to 40A

Also available in SmartGlow® "It glows when it blows"



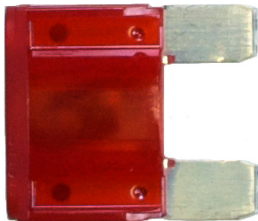
JCASE® Cartridge Fuse

Amperages 20A to 60A. Cartridge fuses are compact and incorporate a design advantage over blade fuses: Over time the spring clips that hold blade fuses will weaken. In cartridge fuses, the weaker female part is designed into the disposable fuse so that the grip and electrical connection will never weaken.



PAL Fuse

Available in several body types. Commonly used in many Asian vehicles.



MAXI® Blade Fuse

Amperages 20A to 80A

Also available in SmartGlow® "It glows when it blows"



MIDI® Bolt-Down Fuse

Amperages 30A to 200A. this compact fuse can replace the MAXI fuse or a fusible link.

Also available in SmartGlow® "It glows when it blows"

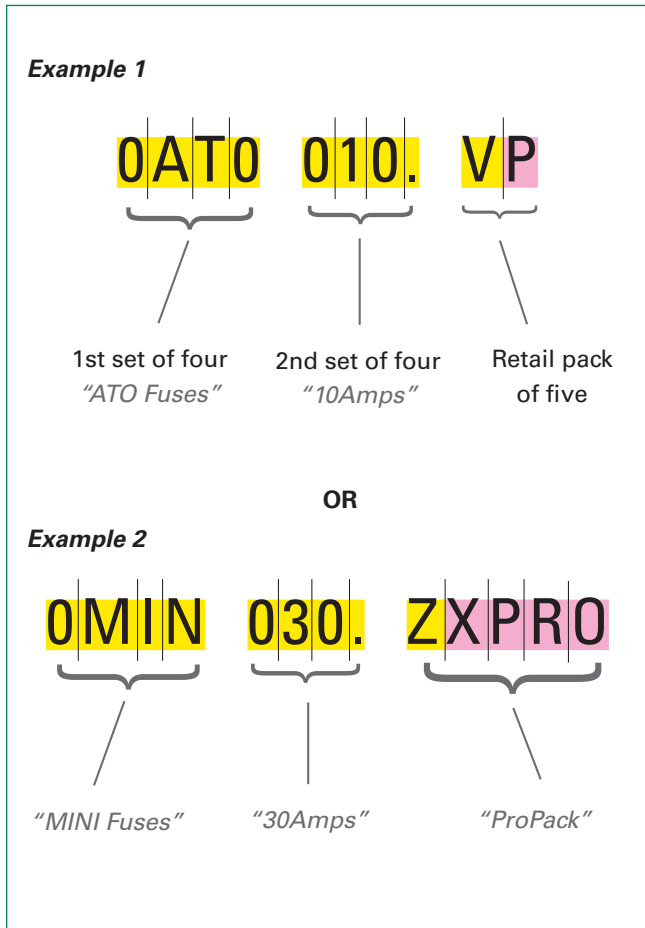


MEGA® Bolt-Down Fuse

Amperages 40A to 500A.

MIDI and MEGA are ideal for protection of heavy electrical cables that connect the battery and alternator. Designed to replace Fusible Links, which have less precise parameters, and which can cause thermal events when they blow. MEGA fuses are more reliable, and can be readily replaced, whereas Fusible Links need to be cut out and soldered back in place.

EXAMPLES OF ORDER NUMBERS



Description

Order numbers must have 9 characters, and may have up to six additional characters at the end of the string. These are for added description, such as ZXPRO. When you place an order, write or type the characters without a break in the string.

Mandatory Characters

First set of four (yellow)

These identify the product group, like LMIN (Low profile MINI fuse) or OMAX (MAXI fuses).

Second set of four (yellow)

These identify the product subgroup. In fuses, this usually identifies the amperage. The decimal point counts as one character, eg 010. = 10A, 100. = 100A, 01.5 = 1.5A.

Ninth character (yellow)

Inner pack quantity. See list of codes below.

Inner Pack Codes

Quantity Code	Quantity
X	1
V	5
T	10
S	20
L	50
H	100
F	200
G	250
U	500
M	1000
D	1500
E	2500
W	3000
Y	4000
N	5000
K	10,000
Z	Miscellaneous

Optional Characters

Tenth character (pink)

Packaging type. P= Retail pack, B=Blister Pack.

Last set of five (pink)

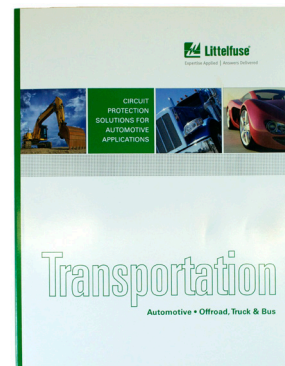
May be used to give additional information, like MXGLO for SmartGlow fuses.

TABLE OF CONTENTS

Boxes & Holders	8
Fuses & Fuseholders	9
MINI blade fuses	9
Low Profile MINI blade fuses	11
ATO blade fuses	12
MAXI blade fuses	15
JCASE cartridge fuses	17
MIDI bolt-down fuses	18
MEGA bolt-down fuses	19
PAL fuses	21
SFE glass fuses	22
AG glass fuses	23
CF8 battery clamp fuses	25
GBC ceramic fuses	25
Circuit Breakers	26
Junction Blocks	27

TRANSPORTATION CATALOG TB101-A PAGE REFERENCE

Product Type	Page number in Littelfuse catalog	Page number in this product guide
2+2 Fuseholder	89	6
5AG glass fuses	not in TB101-A catalog	22
AGA glass fuses (1AG)	not in TB101-A catalog	21
AGC fuseholders (3AG)	not in TB101-A catalog	22
AGC glass fuses (3AG)	not in TB101-A catalog	21
AGW glass fuses (7AG)	not in TB101-A catalog	22
AGW/AGX assortment	not in TB101-A catalog	22
ATO & MINI diagnostic kit	not in TB101-A catalog	7
ATO emergency kit	not in TB101-A catalog	7
ATO fuseholders	127	12
ATO fuses	15 & 17	10
ATO SmartGlow fuses	not in TB101-A catalog	11
Blade fuse Tech Pack	not in TB101-A catalog	12
Breakers	not in TB101-A catalog	24
CF8 terminal fuses	60	23
Circuit Breakers	not in TB101-A catalog	24
Fuse puller	161	22
GBC thermoplastic fuses	not in TB101-A catalog	23
HWB18 PDM	not in TB101-A catalog	6
HWB60 PDM	86	6
JCASE fuseholders	132	15
JCASE fuses	38	15
Junction Blocks	92	25
Low profile MINI fuses	13	9
MAXI fuseholders	130	14
MAXI fuses	26	13
MAXI SmartGlow fuses	not in TB101-A catalog	14
MEGA fuseholders	153 & 154	18
MEGA fuses	51	17
MIDI fuseholders	151 & 152	16
MIDI fuses	45	16
MINI fuseholders	126	8
MINI fuses	6	7
MINI SmartGlow fuses	not in TB101-A catalog	8
PAL fuses	71 onwards	19
SFE glass fuses	not in TB101-A catalog	20



Littelfuse TB101-A Catalog



Sealed compact boxes to hold and connect fuses, breakers and other components.

Part Description	Part Number	Packaging	What comes in an order
HWB60	PDM21001LXM	Code L.	50 HWB60 fuseboxes in bulk in a carton
HWB18 & *TPAs & bracket	PDM31001ZXM	Code Z.	36 HWB18 fuseboxes in bulk in a carton
HWB18 & *TPAs	PDM31002ZXM		
HWB18 only	PDM31003ZXM		
2+2 Mini-Fuse & JCASE Holder	BPDMA104HXF1	Code H.	100 2+2 fuseholders in bulk in a carton

*TPA: Terminal Position Assurance lock



Hot Feed Sheets:
D-637 HWB 60
D-636 HWB 18
D-629 2+2



HWB 60 Sealed Hardwired Box

Accepts up to 30 280-style components



HWB 18 Sealed Hardwired Box

Accepts up to 9 280-style components (MINI fuses and 280 series relays)



2 + 2 Fuseholder

Accepts 2 MINI and 2 JCASE fuses

MINI[®] BLADE FUSES AND FUSEHOLDERS



A fuse that's rapidly becoming the standard for vehicle circuit protection. Wide temperature range -40°C to 125°C. 10.9mm wide. Rated 32V. Silver plated blades. SmartGlow rated 12V.

OMIN Series (Corresponds to 0297 Series in catalog)

Part Number	Amps	Packaging	What comes in an order
OMIN002.VP	2A	Code VP.	5 MINI fuses per blister pack x 5BPs = 25 fuses
OMIN003.VP	3A		
OMIN004.VP	4A		
OMIN005.VP	5A		
OMIN07.5VP	7.5A		
OMIN010.VP	10A		
OMIN015.VP	15A		
OMIN020.VP	20A		
OMIN025.VP	25A		
OMIN030.VP	30A		
OMIN002.V	2A	Code V.	5 MINI fuses per pillbox x 20 pillboxes = 100 fuses
OMIN003.V	3A		
OMIN004.V	4A		
OMIN005.V	5A		
OMIN07.5V	7.5A		
OMIN010.V	10A		
OMIN015.V	15A		
OMIN020.V	20A		
OMIN025.V	25A		
OMIN030.V	30A		
OMIN010.ZXPRO	10A	Code ZXPRO, Pro-Pack.	25 MINI fuses per ProPack x 5 ProPacks = 125 fuses
OMIN015.ZXPRO	15A		
OMIN020.ZXPRO	20A		
OMIN025.ZXPRO	25A		
OMIN030.ZXPRO	30A		



Fuse Kits

Part Number	Amps	Packaging	What comes in an order
00940479ZP	Assorted	ATO MINI diagnostic emergency kit, Code ZP.	5 kits of assorted ATO & MINI plus a tester/puller
00940475Z	---	ProPack kit, Code Z.	5 kits of 5 MAXI and assortment of ATO & MINI plus pullers for ATO/MINI and MAXI

MINI[®] BLADE FUSES AND FUSEHOLDERS

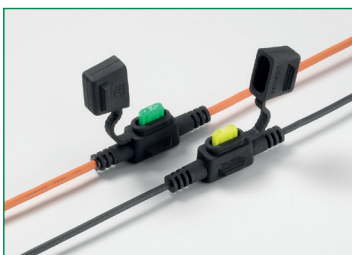


SmartGlow fuses feature an indicator light that glows when the fuse has blown - "When it blows it glows." Makes troubleshooting simple.

SmartGlow feature is available in MINI, ATO and MAXI.

0MIN Series SmartGlow MINI Fuses

Part Number	Amps	Packaging	What comes in an order
0MIN003.VPGLO	3A	<i>SmartGlow, Code VPGLO.</i>	2 SmartGlow MINI fuses per blister pack x 5BPs = 10 fuses
0MIN005.VPGLO	5A		
0MIN07.5VPGLO	7.5A		
0MIN010.VPGLO	10A		
0MIN015.VPGLO	15A		
0MIN020.VPGLO	20A		
0MIN025.VPGLO	25A		
0MIN030.VPGLO	30A		
0MIN003.VXGLO	3A	<i>SmartGlow, Code VXGLO.</i>	5 SmartGlow MINI fuses per pillbox x 20 pillboxes = 100 fuses
0MIN005.VXGLO	5A		
0MIN07.5VXGLO	7.5A		
0MIN010.VXGLO	10A		
0MIN015.VXGLO	15A		
0MIN020.VXGLO	20A		
0MIN025.VXGLO	25A		
0MIN030.VXGLO	30A		



MINI Fuseholders

Part Number	Amps	Packaging	What comes in an order
0FHM001XP	20A (14AWG)	<i>Inline fuseholder, Code XP</i>	1 fuseholder per blister pack x 5BPs = 5 fuseholders
0FHM002XP	30A (12AWG)	<i>Inline fuseholder, Code XP</i>	1 fuseholder per blister pack x 5BPs = 5 fuseholders
0FHM001SXJ	20A (14AWG)	<i>Inline fuseholder, Code S</i>	20 fuseholders bulk in carton = 20 fuseholders
0FHM002SXJ	30A (12AWG)	<i>Inline fuseholder, Code S</i>	20 fuseholders bulk in carton = 20 fuseholders
0FHM0001LXN	20A (14AWG)	<i>Inline fuseholder, Code Z</i>	50 fuseholders bulk in carton = 50 fuseholders
0FHM0002LXN	30A (12AWG)	<i>Inline fuseholder, Code Z</i>	50 fuseholders bulk in carton = 50 fuseholders
0FHM001ZXJ	20A (14AWG)	<i>Inline fuseholder, Code Z</i>	1000 fuseholders bulk in carton = 1000 fuseholders
0FHM002ZXJ	30A (12AWG)	<i>Inline fuseholder, Code Z</i>	1000 fuseholders bulk in carton = 1000 fuseholders

LOW PROFILE MINI® BLADE FUSES



Same performance as a MINI, but with a smaller overall height, achieved by locating the terminals into the body. 10.9mm wide. Rated 58V.

LMIN Series (Corresponds to 0891 Series in catalog)

Part Number	Amps	Packaging	What comes in an order
LMIN005.VP	5A	Code VP.	5 Low Profile MINI fuse per blister pack x 5BPs= 25 fuses
LMIN010.VP	10A		
LMIN015.VP	15A		
LMIN020.VP	20A		
LMIN025.VP	25A		
LMIN030.VP	30A		
LMIN002.V	2A	Code V.	5Low Profile MINI fuses per pillbox x 20 pillboxes = 100 fuses
LMIN005.V	5A		
LMIN07.5V	7.5A		
LMIN010.V	10A		
LMIN015.V	15A		
LMIN020.V	20A		
LMIN025.V	25A		
LMIN030.V	30A		
00904506ZP	Assorted	---	6 Low Profile MINI fuses per blister pack x 5 BPs = 30 fuses



MINI fuse has standard blades



Low Profile MINI fuse has blades that are set back

ATO® BLADE FUSES & FUSEHOLDERS



The very popular two-blade fuse, 19.1mm wide. Rated 32V. Patented and introduced by Littelfuse in 1976.

0ATO Series Fuses

Part Number	Amps	Packaging	What comes in an order
0ATO001.VP	1A	<i>Code VP.</i>	5 ATO fuses per blister pack x 5BPs = 25 fuses
0ATO002.VP	2A		
0ATO003.VP	3A		
0ATO004.VP	4A		
0ATO005.VP	5A		
0ATO007.5VP	7.5A		
0ATO010.VP	10A		
0ATO015.VP	15A		
0ATO020.VP	20A		
0ATO025.VP	25A		
0ATO030.VP	30A		
0ATO040.VP	40A		
0ATO001.V	1A	<i>Code V.</i>	5 ATO fuses per pillbox x 20 pillboxes = 100 fuses
0ATO002.V	2A		
0ATO003.V	3A		
0ATO004.V	4A		
0ATO005.V	5A		
0ATO007.5V	7.5A		
0ATO010.V	10A		
0ATO015.V	15A		
0ATO020.V	20A		
0ATO025.V	25A		
0ATO030.V	30A		
0ATO040.V	40A		
0ATO005.ZXPRO	5A	<i>Pro-Pack, Code ZXPRO.</i>	25 ATO fuses per ProPack x 5 ProPacks = 125 fuses
0ATO007.5ZXPRO	7.5A		
0ATO010.ZXPRO	10A		
0ATO015.ZXPRO	15A		
0ATO020.ZXPRO	20A		
0ATO025.ZXPRO	25A		
0ATO030.ZXPRO	30A		



ATO® BLADE FUSES & FUSEHOLDERS

0287 Series Fuses (Bulk) Fuses

Part Number	Amps	Packaging	What comes in an order
0287001.U	1A	<i>Code U.</i>	500 ATO fuses bulk in carton = 500 fuses
0287003.U	3A		
0287004.U	4A		
0287005.U	5A		
028707.5U	7.5A		
0287010.U	10A		
0287015.U	15A		
0287020.U	20A		
0287025.U	25A		
0287030.U	30A		
0287040.U	40A		



0ATO Series SmartGlow Fuses

Part Number	Amps	Packaging	What comes in an order
0ATO005.VPGLO	5A	<i>Code VPGLO.</i>	2 ATO SmartGlow fuses per blister pack x 6BPs = 12 fuses
0ATO010.VPGLO	10A		
0ATO015.VPGLO	15A		
0ATO020.VPGLO	20A		
0ATO025.VPGLO	25A		
0ATO030.VPGLO	30A		
0ATO010.TPGLO	10A	<i>Code TPGLO.</i>	10 ATO SmartGlow fuses per blister pack x 6BPs = 60 fuses
0ATO015.TPGLO	15A		
0ATO020.TPGLO	20A		
0ATO025.TPGLO	25A		
0ATO030.TPGLO	30A		
0ATO003.MXGLO	3A	<i>Code MXGLO.</i>	1000 SmartGlow fuses bulk in carton = 1000 fuses
0ATO005.MXGLO	5A		
0ATO07.5MXGLO	7.5A		
0ATO010.MXGLO	10A		
0ATO015.MXGLO	15A		
0ATO020.MXGLO	20A		
0ATO025.MXGLO	25A		
0ATO030.MXGLO	30A		
00940202ZPGLO5	Assorted	<i>Code ZP.</i>	5 SmartGlow fuses per blister pack x 5BPs = 125

ATO® BLADE FUSES & FUSEHOLDERS

Assortments and Fuse Pullers

Part Number	Amps	Packaging	What comes in an order
00940370ZP	Assorted	<i>Emergency kit, Code ZP</i>	Kit of 6 assorted ATO fuses plus a puller x 5 kits = 60 fuses
00940479ZP	Assorted	<i>ATO MINI diagnostic emergency kit, Code ZP.</i>	Kit of 5 MAXI + assortment of ATO & MINI + pullers for ATO/MINI/MAXI x 5 kits = 10 kits
00940475Z	Assorted	<i>Blade fuse tech pak, Code Z.</i>	Kit of 5 MAXI + assortment of ATO & MINI + pullers for ATO/MINI/MAXI x 5 kits = 10 kits
00940416Z	Assorted	<i>Code Z.</i>	5 assorted ATO fuses per pillbox x 200 pillboxes = 1000 fuses
00970019XP	---	<i>Code XP.</i>	1 ATO tester/puller per blister pack x 5 BPs = 5 tester/pullers



ATO tester/puller

ATO Inline Fuseholders

Part Number	Amps	Packaging	What comes in an order
0FHA0001XP	20A (16AWG)	<i>Fuseholder, Code XP</i>	1 inline fuseholder per blister pack x 5BPs = 5 fuseholders
0FHA0002XP	30A (12AWG)	<i>Fuseholder, Code XP</i>	1 inline fuseholder per blister pack x 5BPs = 5 fuseholders
0FHA001SXJ	20A (16AWG)	<i>Fuseholder, Code S</i>	20 inline fuseholders bulk in carton = 20 fuseholders
0FHA002SXJ	30A (12AWG)	<i>Fuseholder, Code S</i>	20 inline fuseholders bulk in carton = 20 fuseholders
0FHA0001ZXJ	20A (16AWG)	<i>Fuseholder, Code Z</i>	1000 inline fuseholders bulk in carton = 1000 fuseholders
0FHA0002ZXJ	30A (12AWG)	<i>Fuseholder, Code Z</i>	1000 inline fuseholders bulk in carton = 1000 fuseholders
FHAC001XP	20A (16AWG)	<i>Fuseholder with cover, Code S</i>	1 inline useholder per blister pack x 5BPs = 5 fuseholders
FHAC002XP	30A (12AWG)	<i>Fuseholder with cover, Code S</i>	1 inline fuseholder per blister pack x 5BPs = 5 fuseholders
FHAC001SXJ	20A (16AWG)	<i>Fuseholder with cover, Code S</i>	20 inline fuseholders bulk in carton = 20 fuseholders
FHAC002SXJ	30A (12AWG)	<i>Fuseholder with cover, Code S</i>	20 inline fuseholders bulk in carton = 20 fuseholders
FHAC001ZXJ	20A (16AWG)	<i>Fuseholder with cover, Code Z</i>	1000 inline fuseholders bulk in carton = 1000 fuseholders
FHAC002ZXJ	30A (12AWG)	<i>Fuseholder with cover, Code Z</i>	1000 inline fuseholders bulk in carton = 1000 fuseholders

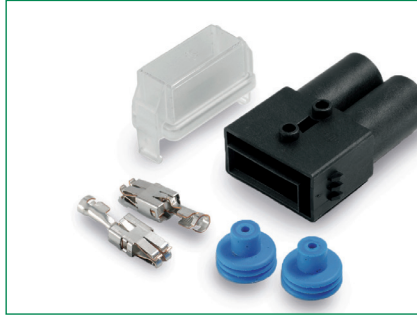


ATO inline fuseholder



ATO inline fuseholder with cover

MAXI® BLADE FUSES & FUSEHOLDERS



Polymer body resists high temperatures that may be encountered under the hood.
29.2mm wide. Rated 32V. Silver-plated blades.

OMAX & 0299 SERIES FUSES

Part Number	Amps	Packaging	What comes in an order
OMAX020.XP	20A	<i>Code XP.</i>	1 MAXI fuse per blister pack x 5BPs = 5 fuses
OMAX030.XP	30A		
OMAX040.XP	40A		
OMAX050.XP	50A		
OMAX060.XP	60A		
OMAX070.XP	70A		
OMAX080.XP	80A		
OMAX020.X	20A	<i>Code X.</i>	1 MAXI fuse per pillbox x 10 pillboxes = 10 fuses
OMAX030.X	30A		
OMAX040.X	40A		
OMAX050.X	50A		
OMAX060.X	60A		
OMAX070.X	70A		
OMAX080.X	80A		
0299020.L	20A	<i>Code L.</i>	50 MAXI fuses bulk in carton = 50 fuses
0299030.L	30A		
0299040.L	40A		
0299050.L	50A		
0299060.L	60A		
0299070.L	70A		
0299080.L	80A		
0299020.ZXNV	20A	<i>MAXI OCR with vision. Code ZXNV.</i>	1200 MAXI fuses bulk in carton = 1200 fuses
0299030.ZXNV	30A		
0299040.ZXNV	40A		
0299050.ZXNV	50A		
0299060.ZXNV	60A		
0299070.ZXNV	70A		
0299080.ZXNV	80A		



MAXI® BLADE FUSES & FUSEHOLDERS

OMAX Series SmartGlow Fuses

Part Number	Amps	Packaging	What comes in an order
OMAX020.XPGLO	20A	<i>Code XPGLO.</i>	1 MAXI SmartGlow fuse per blister pack x 6 BPs = 6 fuses
OMAX030.XPGLO	30A		
OMAX040.XPGLO	40A		
OMAX050.XPGLO	50A		
OMAX060.XPGLO	60A		
OMAX070.XPGLO	70A		
OMAX080.XPGLO	80A		
OMAX100.XPGLO	100A		
OMAX020.HXGLO	20A	<i>Code HXGLO.</i>	100 MAXI SmartGlow fuses bulk in carton = 100 fuses
OMAX030.HXGLO	30A		
OMAX040.HXGLO	40A		
OMAX050.HXGLO	50A		
OMAX060.HXGLO	60A		
OMAX070.HXGLO	70A		
OMAX080.HXGLO	80A		



MAXI fuseholder with cover

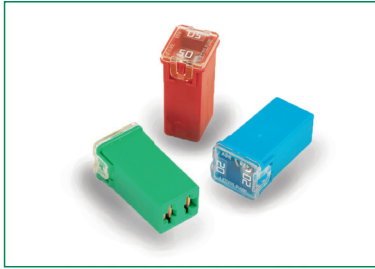


MAXI inline fuseholder with cover

Miscellaneous MAXI fuseholders & Assortments

Part Number		Packaging	What comes in an order
01520001U	MAXI fuseholder	<i>Code U.</i>	500 MAXI fuseholders bulk in carton = 500 fuseholders
01520900U	MAXI fuseholder cover	<i>Code U.</i>	500 MAXI fuseholder covers bulk in carton = 500 fuseholder covers
MAHC0001ZXJ	MAXI inline fuseholder with cover	<i>Inline fuseholder. Code Z.</i>	10 MAXI fuseholders with covers bulk in carton = 10 fuseholders with cover
00940475Z	Assorted	<i>Blade fuse Tech Pack</i>	Kit of 5 MAXI , assorted ATO & MINI + ATO/MINI tester/puller + MAXI puller x 5 kits = 5 kits

JCASE® CARTRIDGE FUSES & FUSEHOLDERS



Cartridge style with female terminals, designed and patented by Littelfuse in 1997. 14.1mm wide. Rated 32V. Unique secondary locking feature holds fuse securely in place.

JCASE Series Fuses

Part Number	Amps	Packaging	What comes in an order
JCAS020.XP	20A	<i>Code XP.</i>	1 JCASE fuse per Blister Pack x 5 BPs = 5 fuses
JCAS030.XP	30A		
JCAS040.XP	40A		
JCAS050.XP	50A		
JCAS060.XP	60A		
JCAS020.X	20A	<i>Code X.</i>	1 JCASE fuse per pillbox x 10 pillboxes = 10 fuses
JCAS030.X	30A		
JCAS040.X	40A		
JCAS050.X	50A		
JCAS060.X	60A		

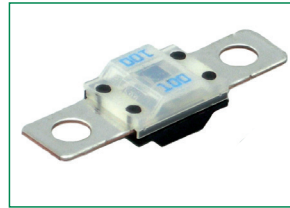
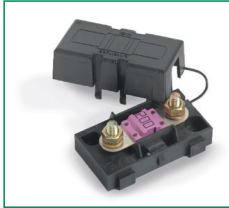
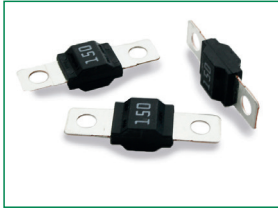


Fuseholder with bracket & cover Fuseholder

FHJC Series Inline Fuseholders (with integral covers)

Part Number		Packaging	What comes in an order
FHJC2001G	JCASE holder with bracket, 10AWG (up to 40A).	<i>Code G</i>	250 JCASE fuseholders bulk in a carton = 250 fuseholders
FHJC2002G	JCASE holder with bracket, 8AWG (up to 60A).		
FHJC2002L	JCASE holder with bracket, 8AWG (up to 60A).	<i>Code L</i>	50 JCASE fuseholders bulk in a carton = 50 fuseholders
FHJC1001G	JCASE holder, 10AWG (up to 40A).	<i>Code G</i>	250 JCASE fuseholders bulk in a carton = 250 fuseholders
FHJC1002G	JCASE holder, 8AWG (up to 60A).		
FHJC1002L	JCASE holder, 8AWG (up to 60A).	<i>Code L</i>	50 JCASE fuseholders bulk in a carton = 50 fuseholders

MIDI® BOLT-DOWN FUSES & FUSEHOLDERS



For high currents 30 to 200A. Designed and patented by Littelfuse. 41.1mm from end to end. Rated 32V.

0498 Series Fuses

Part Number	Amps	Packaging	What comes in an order
0498030.SXT	30A	<i>Transparent housing. Code S.</i>	20 MIDI fuses bulk per carton = 20 fuses
0498040.SXT	40A		
0498050.SXT	50A		
0498060.SXT	60A		
0498070.SXT	70A		
0498080.SXT	80A		
0498100.SXT	100A		
0498125.SXT	125A		
0498150.SXT	150A		
0498175.SXT	175A		
0498200.SXT	200A		
0498030.H	30A	<i>Code H.</i>	100 MIDI fuses bulk per carton = 100 fuses
0498040.H	40A		
0498050.H	50A		
0498060.H	60A		
0498070.H	70A		
0498080.H	80A		
0498100.H	100A		
0498125.H	125A		
0498150.H	150A		
0498175.H	175A		
0498200.H	200A		

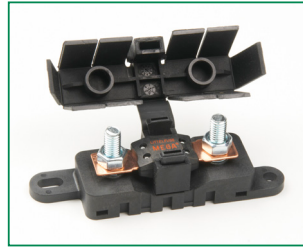
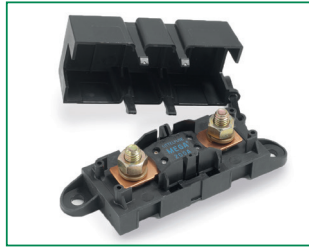


MIDI inline fuseholder (Left)
MIDI covered fuseholder (Right)

0498 Series Fuseholders

Part Number	Amps	Packaging	What comes in an order
04980900S	200A Max	<i>Code S.</i>	20 MIDI covered fuseholders bulk per carton = 20 fuseholders
04980921GXM5	200A Max	<i>Code G.</i>	250 MIDI inline fuseholders bulk per carton = 20 fuseholders
04980921.L	200A Max	<i>Code L.</i>	50 MIDI inline fuseholders bulk per carton = 50 fuseholders
04980921.X	200A Max	<i>Code X.</i>	1 MIDI holder per pillbox x 10 pillboxes = 10 fuseholders

MEGA® BOLT-DOWN FUSES & FUSEHOLDERS



For high currents up to 500A. Ideal for battery and alternator protection, and for use with heavy gauge cable. Patented by Littelfuse. Rated 32V.

OMEG Series Fuses

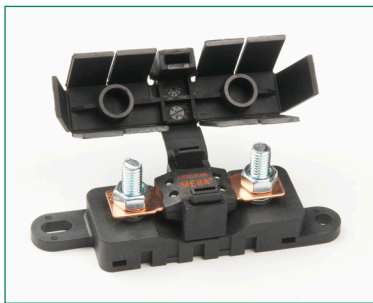
Part Number	Amps	Packaging	What comes in an order
0MEG100.XP	100A	<i>Code XP.</i>	1 MEGA fuse per Blister Pack x 5 BPs = 5 fuses
0MEG125.XP	125A		
0MEG150.XP	150A		
0MEG175.XP	175A		
0MEG200.XP	200A		
0MEG225.XP	225A		
0MEG250.XP	250A		
0MEG100.X	100A	<i>Code X.</i>	1 MEGA fuse per pillbox x 10 pillboxes = 10 fuses
0MEG125.X	125A		
0MEG150.X	150A		
0MEG175.X	175A		
0MEG200.X	200A		
0MEG225.X	225A		
0MEG250.X	250A		
0MEG300.X	300A		
0MEG350.X	350A		
0MEG400.X	400A		
0MEG450.X	450A		
0MEG500.X	500A		
0MEG100.L	100A	<i>Code L.</i>	50 MEGA fuses bulk per carton = 50 fuses
0MEG125.L	125A		
0MEG150.L	150A		
0MEG175.L	175A		
0MEG200.L	200A		
0MEG225.L	225A		
0MEG250.L	250A		
0MEG300.L	300A		
0MEG350.L	350A		
0MEG400.L	400A		
0MEG450.L	450A		
0MEG500.L	500A		



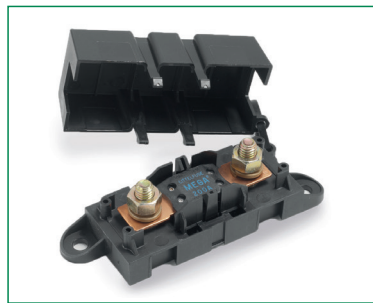
MEGA® BOLT-DOWN FUSES & FUSEHOLDERS

0298 Series MEGA Fuses (Bulk)

Part Number	Amps	Packaging	What comes in an order
0298080.ZXEH	80A	<i>Code Z.</i>	500 MEGA fuses bulk per carton = 500 fuses
0298100.ZXEH	100A		
0298125.ZXEH	125A		
0298150.ZXEH	150A		
0298175.ZXEH	175A		
0298200.ZXEH	200A		
0298225.ZXEH	225A		
0298250.ZXEH	250A		
0298300.ZXH	300A		
0298350.ZXH	350A		
0298400.ZXH	400A		
0298450.ZXH	450A		
0298500.ZXH	500A		



New MEGA - Flex fuseholder with flexible cover accepts power cables from any direction. Holders interlock.

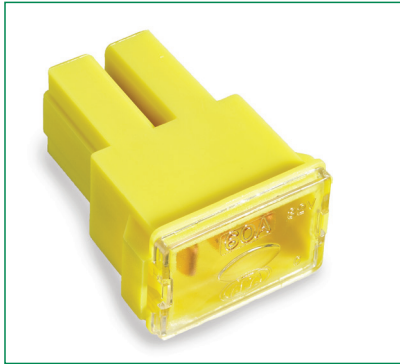


MEGA fuseholder

0298 Series MEGA Fuseholders

Part Number	Amps	Packaging	What comes in an order
02981028HXFC	---	<i>Code H.</i>	100 MEGA-Flex fuseholders bulk per carton = 100 fuses
02981028HXFC-SS	---	<i>Code H.</i>	100 MEGA-Flex stainless steel fuseholders bulk per carton = 100 fuses
02980900Z	---	<i>Code Z.</i>	70 MEGA fuseholders bulk per carton = 70 fuses
02981001ZXT	---	<i>Code Z.</i>	160 MEGA fuseholders bulk per carton = 160 fuses

PAL FUSES



OPAL Series Fuses

Part Number	Amps	Packaging	What comes in an order
0PAL020.X	20A	<i>Code X.</i>	<i>Series 0</i> PAL 293 . 1 PAL fuse per pillbox x 10 pillboxes = 10 fuses
0PAL030.X	30A		
0PAL040.X	40A		
0PAL050.X	50A		
0PAL060.X	60A		
0PAL020.XP	20A	<i>Code XP.</i>	<i>Series 0</i> PAL 293 . 1 PAL fuse per Blister Pack x 5 BPs = 5 fuses
0PAL030.XP	30A		
0PAL040.XP	40A		
0PAL050.XP	50A		
0PAL060.XP	60A		
0PAL160.XP	60A	<i>Code XP.</i>	<i>Series 1</i> PAL 294 . 1 PAL fuse per Blister Pack x 5 BPs = 5 fuses
0PAL180.XP	80A		
0PAL1100XP	100A		
0PAL1120XP	120A		
0PAL4100X	100A	<i>Code X.</i>	<i>Series 2</i> PAL 283B . 1 PAL fuse per pillbox x 10 pillboxes = 10 fuses
0PAL330.XP	30A	<i>Code XP.</i>	<i>Series 3</i> PAL 293B . 1 PAL fuse per Blister Pack x 5 BPs = 5 fuses
0PAL340.XP	40A		



Series 0
PAL293



Series 1
PAL294



Series 2
PAL283B



Series 3
PAL293B

SFE GLASS FUSES



Glass fuses that are designed to the standards of the SFE (Society of Fuse Engineers). All are 1/4" diameter, but vary in length according to amp rating. Rated 32V.

OSFE Series Fuses

Part Number	Amps	Packaging	What comes in an order
OSFE004.V	4A	<i>Code V.</i>	5 SFE fuses per pillbox x 10 pillboxes = 50 fuses
OSFE006.V	6A		
OSFE07.5V	7.5A		
OSFE009.V	9A		
OSFE014.V	14A		
OSFE020.V	20A		
OSFE030.V	30A		
OSFE0001ZP	Assorted	<i>Code ZP.</i>	7 assorted SFE fuses per Blister Pack x 5 BPs = 35 fuses

AG SERIES GLASS FUSES



AG originally stood for 'all glass', and there are different kinds that vary in length and diameter. Rated 32V.

- AGA = 1AG
- AGC = 3AG
- AGU = 5AG
- AGW = 7AG
- AGX = 8AG

0AGA & 0AGC Series Fuses

Part Number	Amps	Packaging	What comes in an order
0AGA01.5V	1.5A	AGA 1AG. Code V.	5 AGA 1AG fuses per pillbox x 10 pillboxes = 50 fuses
0AGA002.V	2A		
0AGA02.5V	2.5A		
0AGA003.V	3A		
0AGA005.V	5A		
0AGA006.V	6A		
0AGA07.5V	7.5A		
0AGA010.V	10A		
0AGA015.V	15A		
0AGA020.V	20A		
0AGA025.V	25A		
0AGA030.V	30A		
0AGA0001ZP	Assorted	Code ZP.	10 assorted AGA 1AG fuses per Blister Pack x 5 BPs = 50 fuses
0AGC.500V	.5A	Code V.	5 AGC 3AG fuses per pillbox x 10 pillboxes = 50 fuses
0AGC001.V	1A		
0AGC01.5V	1.5A		
0AGC002.V	2A		
0AGC02.5V	2.5A		
0AGC003.V	3A		
0AGC004.V	4A		
0AGC005.V	5A		
0AGC006.V	6A		
0AGC07.5V	7.5A		
0AGC008.V	8A		
0AGC010.V	10A		
0AGC015.V	15A		
0AGC020.V	20A		
0AGC025.V	25A		
0AGC030.V	30A		
0AGC035.V	35A		
0AGC0001ZP	Assorted	Code ZP.	10 assorted AGC 3AG fuses per Blister Pack x 5 BPs = 50 fuses

AG SERIES GLASS FUSES



AGU, AGW & AGX fuses

Part Number	Amps	Packaging	What comes in an order
0511030.M	30A	<i>Code M.</i>	50 AGU 5AG fuses bulk per carton = 50 fuses
0511035.M	35A		
0511050.M	50A		
0AGW0001ZP	Assorted	<i>Code ZP.</i>	10 assorted AGW/AGX fuses per Blister Pack x 5 BPs = 50 fuses
0AGW001.V	1A	<i>Code V.</i>	5 AGW 7AG fuses per pillbox x 10 pillboxes = 50 fuses
0AGW01.5V	1.5A		
0AGW003.V	3A		
0AGW004.V	4A		
0AGW005.V	5A		
0AGW006.V	6A		
0AGW015.V	15A		
0AGW020.V	20A		
0AGW030.V	30A		



Fuseholders & Fuse pullers

Part Number	Amps	Packaging	What comes in an order
03420024Z	---	<i>Code Z.</i>	1 panel mount sealed military grade AGC 3AG fuseholder bulk per carton = 1 fuseholder
00970023XP	---	<i>Code XP.</i>	1 Glass/ATO/MINI puller per Blister Pack x 5 BPs = 5 pullers
00970023S	---	<i>Code S.</i>	20 Glass/ATO/MINI pullers bulk per carton = 20 pullers

CF8 BATTERY TERMINAL FUSES



The fuse clamps onto a M8 sized battery post, using a battery clamp. A transparent cover allows visual inspection of fuse element. 50A - 300A.

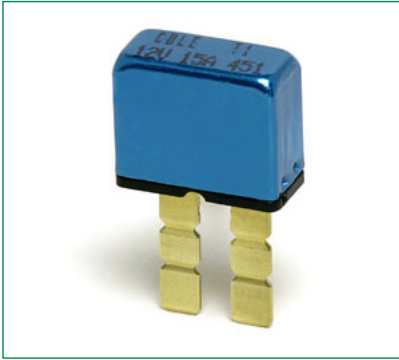
Part Number	Amps	Packaging	What comes in an order
155.0892.5501	50A	<i>Code 1.</i>	100 CF8 fuses bulk per carton = 100 fuses
155.0892.5751	75A		
155.0892.6101	100A		
155.0892.6121	125A		
155.0892.6151	150A		
155.0892.6171	175A		
155.0892.6201	200A		
155.0892.6251	250A		
155.0892.6301	300A		



A type of fuse with a heat-resistant ceramic body. The fuse element extends over the body from end to end. Bodies vary in color by amperage. Voltage rating 32V.

GBC Thermoplastic Fuses Series 0GBC

Part Number	Amps	Packaging	What comes in an order
0GBC005.V	5A	<i>Code V.</i>	5 GBC fuses per Blister Pack x 10 BPs = 50 fuses
0GBC008.V	8A		
0GBC016.V	16A		
0GBC025.V	25A		



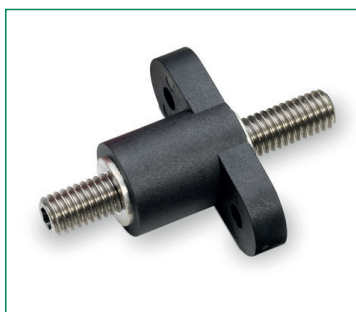
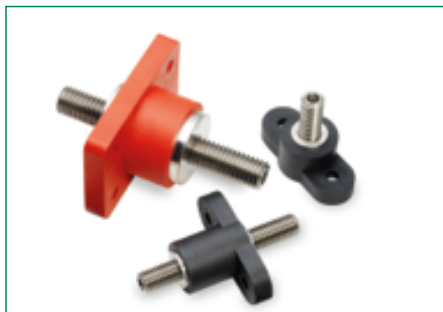
ATO style, with break-off blades to fit different styles of fusebox.

Part Number	Amps	Packaging	What comes in an order
0UCB005.XP	5A	<i>Universal ATO style Type II breaker. Code XP.</i>	One universal circuit breaker in a blister pack x 5BPs = 5 breakers
0UCB010.XP	10A		
0UCB015.XP	15A		
0UCB020.XP	20A		
0UCB025.XP	25A		
0UCB030.XP	30A		
0UCB005.X	5A	<i>Universal ATO style Type II breaker. Code X.</i>	100 universal circuit breakers bulk per carton = 100 breakers
0UCB010.X	10A		
0UCB015.X	15A		
0UCB020.X	20A		
0UCB025.X	25A		
0UCB030.X	30A		
0MCB020.X	20A	<i>MAXI style Type I breaker. Code X.</i>	One MAXI breaker per pillbox x 10 pillboxes = 10 breakers
0MCB030.X	30A		
0MCB040.X	40A		
0MXB020.X	20A	<i>MAXI style Type II breaker. Code X.</i>	One MAXI breaker per pillbox x 10 pillboxes = 10 breakers
0MXB030.X	30A		
0MXB040.X	40A		
0MIBB005.X	5A	<i>MINI style Type II breaker. Code X.</i>	One MINI breaker per pillbox x 10 pillboxes = 10 breakers
0MIBB010.X	10A		
0MIBB015.X	15A		
0MIBB020.X	20A		
0MIBB025.X	25A		
0MIBB030.X	30A		



MAXI style breaker (Left)
MINI style breaker (right)

JUNCTION BLOCKS & FEED-THRU STUDS



Series JBPT

Part Number		Packaging	What comes in an order
JBPT2P01ZXR	---	Code Z.	16 red feed-thru 1/2-13 studs bulk per carton = 16 feed-thru studs
JBPT4P01ZXB	---	Code Z.	16 black feed-thru 5/16-18 studs bulk per carton = 16 feed-thru studs
JBPT3P01ZXB	---	Code Z.	144 black feed-thru 3/8-16 studs bulk per carton = 144 feed-thru studs
JBPT3P02ZXB	---	Code Z.	128 red feed-thru 3/8-16 studs bulk per carton = 128 feed-thru studs
JBPT2N02ZXB	---	Code Z.	16 black junction blocks 1/2-13 bulk per carton = 16 junction blocks
JBPT2N03ZXB	---	Code Z.	16 black junction blocks 5/15-18 bulk per carton = 16 junction blocks
JBPT3N03ZXR	---	Code Z.	128 red junction blocks 3/8-16 bulk per carton = 128 junction blocks
JBPT3N03ZXB	---	Code Z.	128 black junction blocks 3/8-16 bulk per carton = 128 junction blocks

As the world's #1 brand in circuit protection Littelfuse offers the broadest and deepest portfolio of circuit protection products and a global network of technical support, backed by more than 85 years of application design expertise. For all of your circuit protection needs visit our Technical Resources center at www.littelfuse.com/technical-resources

- **Application Notes**
- **Application Testing**
- **SPICE Models**
- **Local Technical Support**
- **Reference Designs**
- **Product Samples**
- **Technical Articles**
- **Certification Documents**
- **Data Sheets**



WWW.LITTELFUSE.COM

Littelfuse is the world leader in circuit protection. We offer an extensive selection of circuit protection technologies for Automotive applications. Littelfuse circuit protection expert staff can assist you in designing circuit protection for your most demanding applications. Solutions for over-current applications as well as over-voltage applications are available from Littelfuse.

Low Current Distribution (LCD) MICRO2, MICRO3, LP MINI, MINI, ATOF, MAXI, MCASE, LP JCASE, JCASE

High Current Distribution (HCD) MIDI, BF1, MEGA, CF

Advanced Power Systems High-voltage and customized fusing solutions

Battery Cable Protection (BCP) CABLE PRO and BF-Inline products for mounting directly inline as part of a high-power cable assembly

Fuse, Relay and Specialty Modules Modular system for constructing custom fuse and relay boxes for low volume applications

Power Distribution FLEC Customizable pre-tooled junction boxes

Accessories For assembly and mounting, shunts, fuse pullers, fuse holders terminals, terminal locks etc.

For more information, please contact your authorized Littelfuse product representative or visit our website at www.littelfuse.com