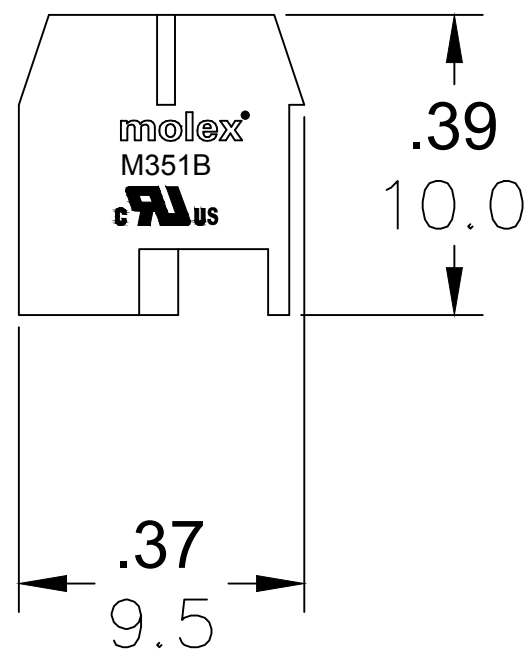
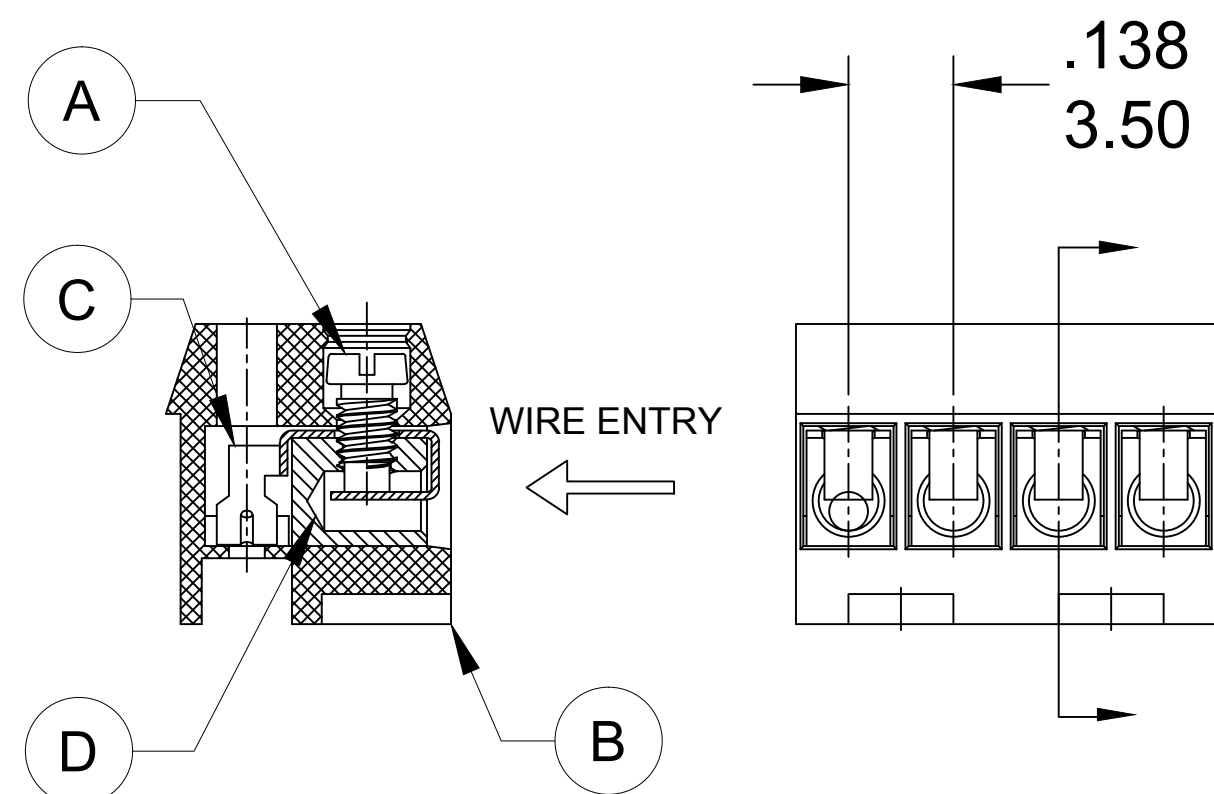
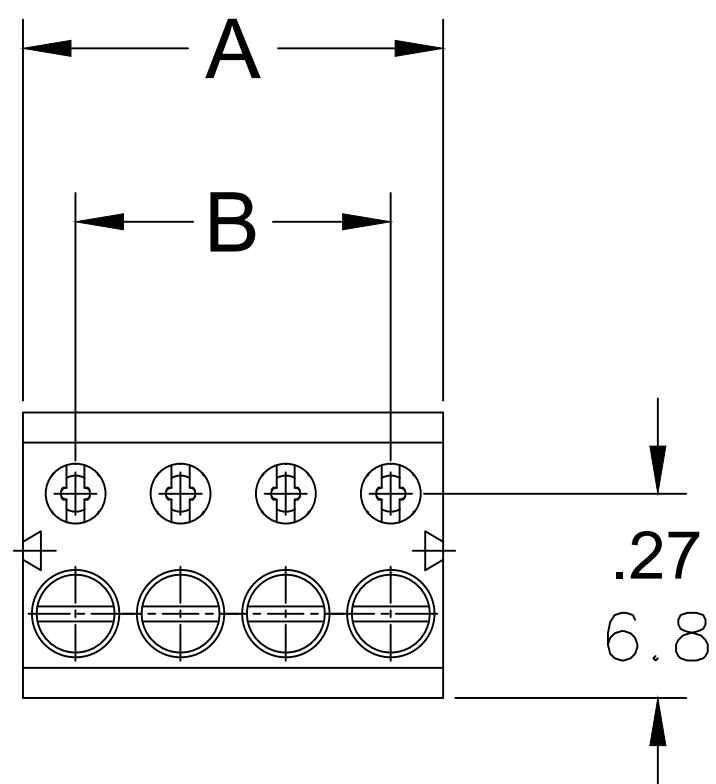
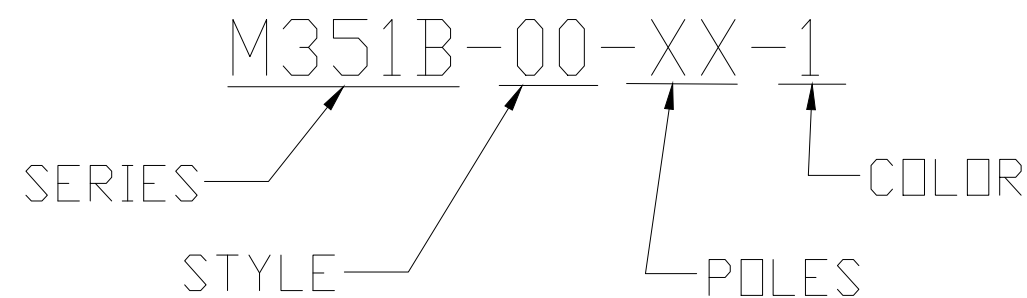


PART NUMBER DATA							
CIRCUITS	PART NUMBER	ENGINEERING NUMBER	COLOR	A IN mm		B IN mm	
2	397500002	M351B-00-02-1	BLACK	.28	7.0	.138	3.50
3	397500003	M351B-00-03-1	BLACK	.41	10.5	.276	7.00
4	397500004	M351B-00-04-1	BLACK	.55	14.0	.413	10.50
5	397500005	M351B-00-05-1	BLACK	.69	17.5	.551	14.00
6	397500006	M351B-00-06-1	BLACK	.83	21.0	.689	17.50
7	397500007	M351B-00-07-1	BLACK	.96	24.5	.827	21.00
8	397500008	M351B-00-08-1	BLACK	1.10	28.0	.965	24.50
9	397500009	M351B-00-09-1	BLACK	1.24	31.5	1.102	28.00
10	397500010	M351B-00-10-1	BLACK	1.38	35.0	1.240	31.50
11	397500011	M351B-00-11-1	BLACK	1.52	38.5	1.378	35.00
12	397500012	M351B-00-12-1	BLACK	1.65	42.0	1.516	38.50
13		M351B-00-13-1	BLACK	1.79	45.5	1.654	42.00
14		M351B-00-14-1	BLACK	1.93	49.0	1.791	45.50
15		M351B-00-15-1	BLACK	2.07	52.5	1.929	49.00
16		M351B-00-16-1	BLACK	2.20	56.0	2.067	52.50
17		M351B-00-17-1	BLACK	2.34	59.5	2.205	56.00
18		M351B-00-18-1	BLACK	2.48	63.0	2.343	59.50

REF. THE LAST 2 DIGITS OF THE PART NUMBER EQUAL CIRCUIT COUNT



ENGINEERING NUMBER LEGEND



CONTACT FACTORY FOR OPTIONAL COLORS

SPECIFICATIONS

1. MATERIAL:

- A. SCREW: M2 STEEL, NI PLATED
- B. BODY: PA66, UL94V-0
- C. CONTACT: PHOS-BRONZE
- D. CAGE: BRASS, NI PLATED

2. WIRE SIZE: 16 TO 28AWG

3. RATING: 125V, 8A

4. MAX TORQUE: 2.5 IN. LBS.

5. WIRE STRIP LENGTH: .16 IN. (4.0mm)

6. OPERATING TEMPERATURE: -40° C TO +105° C

7. DIMS SHOWN ARE FOR REFERENCE ONLY

TOLERANCES			
MM	TOL	INCH	TOL
0-6	±0.25	0-.24	±.010
>6-30	±0.40	.24-1.18	±.016
>30-120	±0.50	1.18-4.76	±.020
>120	±0.80	>4.76	±.031

REVISED DOC TOL EC NO.: ICG2017-0881 DRWN: ABENJAMI CHKD: --- APPR: BRUPERT 2014/10/16 REV A1	QUALITY SYMBOL ▽=0 ▽=0	GENERAL TOLERANCES (UNLESS SPECIFIED) <table border="1"> <thead> <tr> <th></th> <th>mm</th> <th>INCH</th> </tr> </thead> <tbody> <tr><td>4 PLACES</td><td>±---</td><td>±---</td></tr> <tr><td>3 PLACES</td><td>±---</td><td>±---</td></tr> <tr><td>2 PLACES</td><td>±---</td><td>±---</td></tr> <tr><td>1 PLACE</td><td>±---</td><td>±---</td></tr> </tbody> </table>		mm	INCH	4 PLACES	±---	±---	3 PLACES	±---	±---	2 PLACES	±---	±---	1 PLACE	±---	±---	DIMENSION STYLE IN/MM	SCALE ---	DESIGN UNITS METRIC	THIRD ANGLE PROJECTION
		mm	INCH																		
	4 PLACES	±---	±---																		
	3 PLACES	±---	±---																		
2 PLACES	±---	±---																			
1 PLACE	±---	±---																			
DRAWN BY RSTONE	DATE 2014/07/14	TITLE TERMINAL BLOCK PLUGGABLE HORIZ. 3.5MM																			
CHECKED BY G FARNSW	DATE ---	MOLEX INCORPORATED																			
APPROVED BY JFMURPHY	DATE 2014/10/16	MATERIAL NO. SEE CHART	DOCUMENT NO. SD-39750-001	SHEET NO. 1 OF 1																	

THIS DRAWING CONTAINS INFORMATION THAT IS PROPRIETARY TO MOLEX INCORPORATED AND SHOULD NOT BE USED WITHOUT WRITTEN PERMISSION