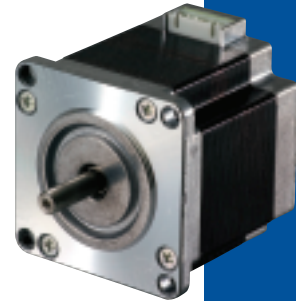
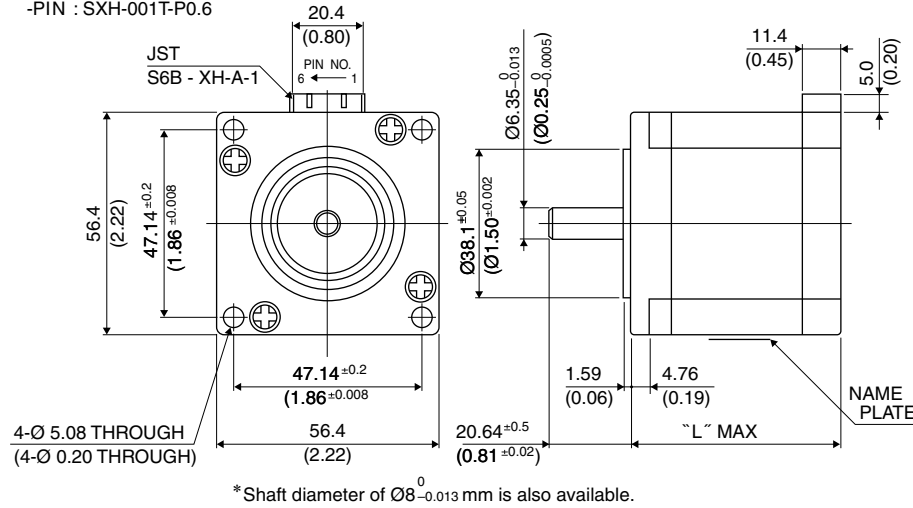


Outline

- LEAD WIRE SIDE
- HSG: XHP-6
- PIN : SXH-001T-P0.6



Hybrid

	"L"
23KY-K2**	42 (1.65)
23KY-K0**	54 (2.13)
23KY-K7**	76 (2.99)

PIN NO. vs. PHASE

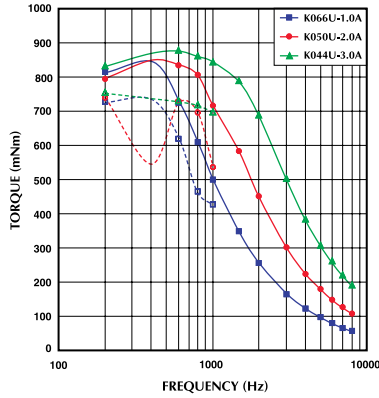
PHASE	A	A COM	\bar{A}	B	B COM	\bar{B}
PIN NO.	1	2	3	4	5	6

Specifications

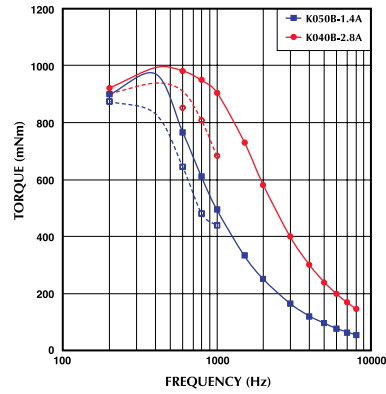
Model	Step Angle	Drive Sequence	Rated Current	Resistance	Holding Torque	Inductance	Rotor Inertia	Detent Torque	Mass
	(deg)		(A)	(Ohms)	(mNm)	(mH)	(g·cm ²)	(mNm)	(g)
23KY-K066U	0.9	UNI-POLAR	1.0	7.00	890	19.0	300	43	680
23KY-K050U	0.9	UNI-POLAR	2.0	1.80	890	5.6	200	43	680
23KY-K044U	0.9	UNI-POLAR	3.0	0.90	890	2.4	300	43	680
23KY-K267U	0.9	UNI-POLAR	1.0	6.30	470	10.0	120	22	470
23KY-K251U	0.9	UNI-POLAR	1.8	1.60	470	3.2	120	22	470
23KY-K244U	0.9	UNI-POLAR	3.0	0.70	470	1.1	120	22	470
23KY-K762U	0.9	UNI-POLAR	1.0	8.60	1250	23.0	360	50	1050
23KY-K748U	0.9	UNI-POLAR	2.0	2.30	1250	6.5	360	50	1050
23KY-K743U	0.9	UNI-POLAR	3.0	1.10	1250	2.9	360	50	1050
23KY-K050B	0.9	BI-POLAR	1.4	3.60	1050	20.0	300	43	680
23KY-K040B	0.9	BI-POLAR	2.8	0.90	1050	3.8	300	43	680
23KY-K251B	0.9	BI-POLAR	1.4	3.00	580	11.0	120	22	470
23KY-K241B	0.9	BI-POLAR	2.8	0.80	580	2.4	120	22	470
23KY-K748B	0.9	BI-POLAR	1.4	4.50	1580	24.0	480	50	1050
23KY-K740B	0.9	BI-POLAR	2.8	1.35	1580	5.7	480	50	1050

Torque/Speed Characteristics

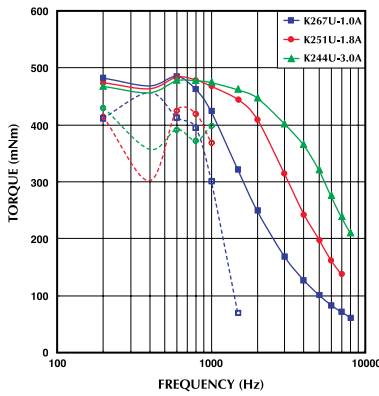
Model No: 23KY-K0xxU
Driver: Chopper Dual
Supply Voltage: 24.0 (Volt)



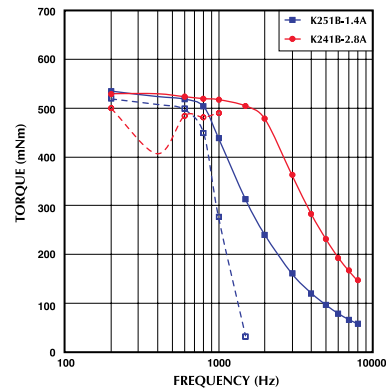
Model No: 23KY-K0xxB
Driver: Chopper Dual
Supply Voltage: 24.0 (Volt)



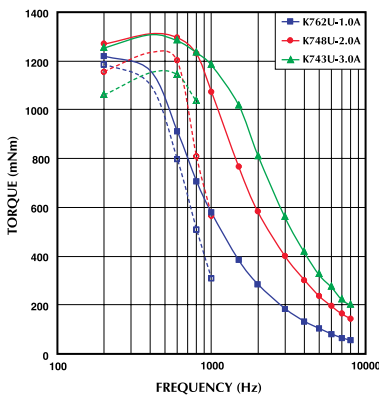
Model No: 23KY-K2xxU
Driver: Chopper Dual
Supply Voltage: 24.0 (Volt)



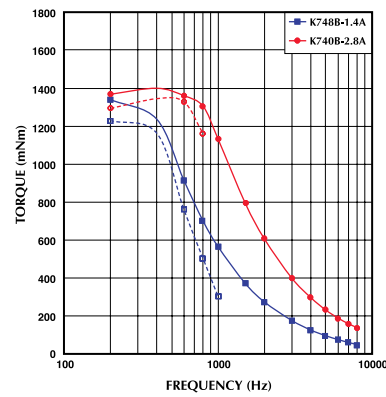
Model No: 23KY-K2xxB
Driver: Chopper Dual
Supply Voltage: 24.0 (Volt)



Model No: 23KY-K7xxU
Driver: Chopper Dual
Supply Voltage: 24.0 (Volt)



Model No: 23KY-K7xxB
Driver: Chopper Dual
Supply Voltage: 24.0 (Volt)



— : PULL OUT
- - - : PULL IN