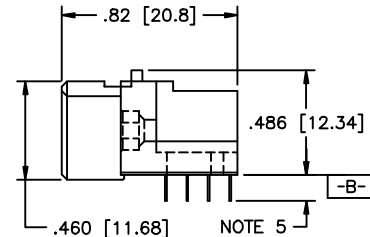
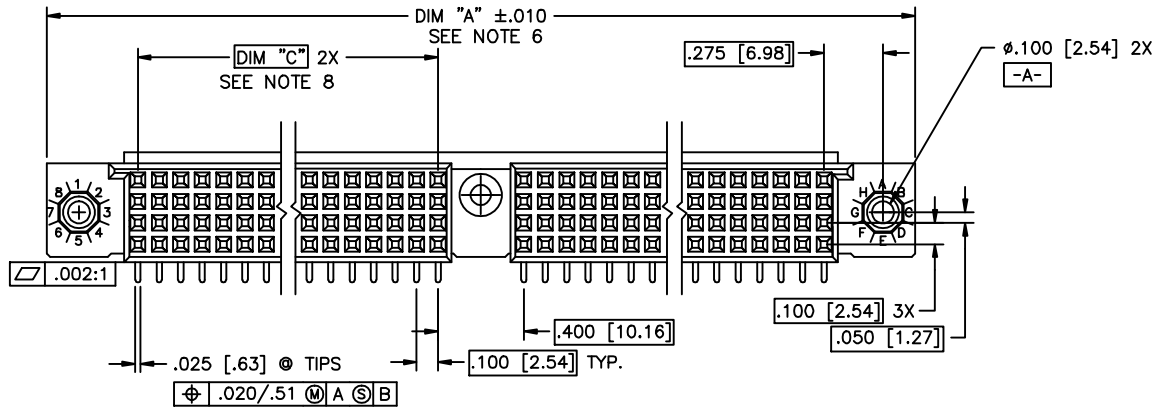
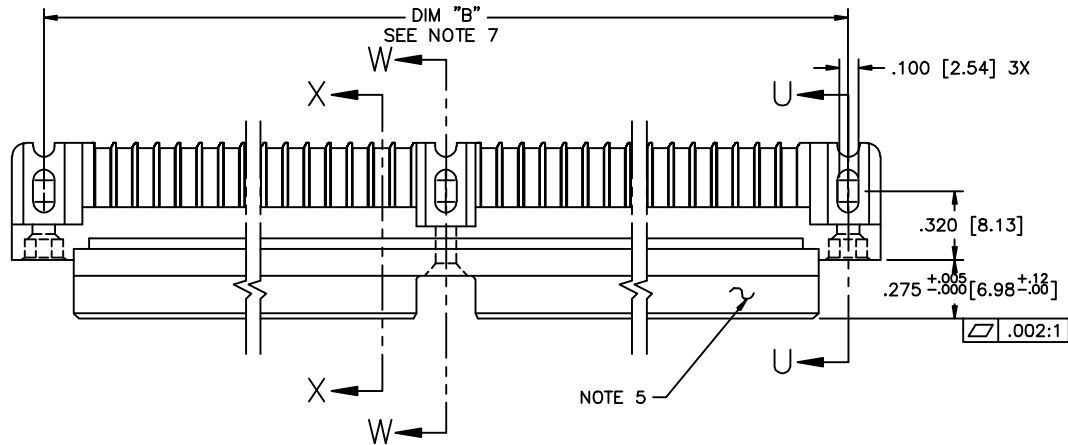


PRODUCT NUMBER

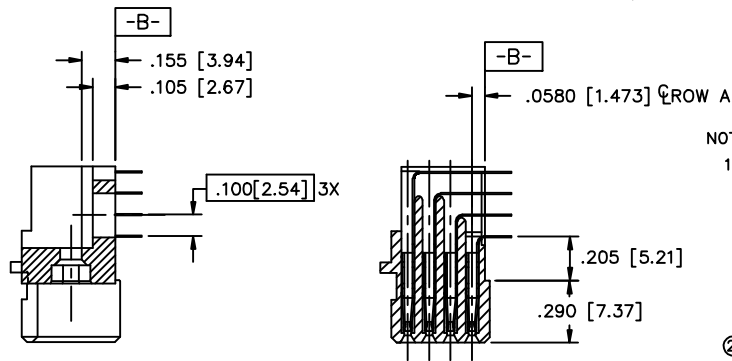
SEE NOTE 1



|             |            |     |          |                                       |             |             |         |            |          |                |                          |
|-------------|------------|-----|----------|---------------------------------------|-------------|-------------|---------|------------|----------|----------------|--------------------------|
| mat'l. code | SEE NOTE 3 |     |          | surface                               | ISO 1902    | tolerance   | ISO 406 | projection | ISO 1101 | product family | HPC                      |
| ltr         | ecn no     | dr  | date     | tolerances unless otherwise specified |             |             | linear  | INCH/MM    | scale    | 1:1            | title                    |
| F           | v41511     | GAH | 10/13/94 | angles                                |             | XXX.X/XXX.X |         |            |          |                | 4 ROW R/A RECEPTACLE     |
| G           | v50266     | SAR | 9/05/95  | linear                                |             | XXX.X/XXX.X |         |            |          |                | SOLDER TAIL, 1 GUIDE PIN |
| H           | v82251     | HTB | 12/28/98 | σ±z                                   |             | XXX.X/XXX.X |         |            |          |                | dwg no                   |
| J           | v00253     | JWS | 1/12/00  | dr                                    | D. SHEAFFER | 1/07/90     |         |            |          |                | sheet 1 of 2             |
| K           | v05-0510   | LP  | 7/18/05  | engr                                  | S. CLARK    | 1/07/90     |         |            |          |                | size                     |
| L           | m06-0255   | EAE | 7/06/06  | chr                                   | S. CLARK    | 1/07/90     |         |            |          |                | A3                       |
| M           | m08-0280   | AGS | 9/30/08  | appd                                  | S. CLARK    | 1/07/90     |         |            |          |                | type                     |
| sheet       | revision   | M   | M        |                                       |             |             |         |            |          |                | Product Customer Drawing |
| index       | sheet      | 1   | 2        |                                       |             |             |         |            |          |                |                          |

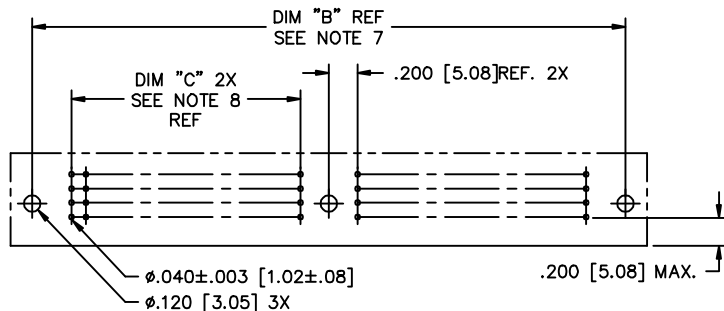
FCJ  
 FCconnect.com  
 Copyright FCJ

| PRODUCT NUMBER<br>SEE NOTE 1 | NUMBER OF POSITIONS<br>SEE NOTE 2 | "Z" - TAIL LENGTH | SOLDER TAIL PLATING | CONTACT PLATING<br>NOTE 11 |
|------------------------------|-----------------------------------|-------------------|---------------------|----------------------------|
| 50004-1YYYY                  | YYY                               | NOTE 4            | TIN LEAD            | 30u"/.76um Au              |
| 50004-3YYYY                  | YYY                               | NOTE 4            | TIN LEAD            | 50u"/1.27um Au             |
| 50004-5YYYY                  | YYY                               | NOTE 4            | TIN LEAD            | 30u"/.76um GXT             |
| 50004-5YYYYLF                | YYY                               | NOTE 4            | TIN                 | 30u"/.76um GXT             |

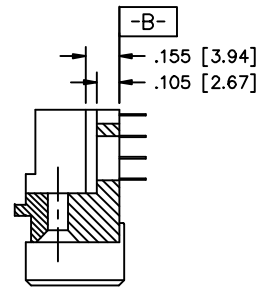


SECTION U-U

SECTION X-X



RECOMMENDED PCB LAYOUT  
(ALL HOLES LOCATED ON .100 [2.54] GRID  
UNLESS OTHERWISE SPECIFIED)



SECTION W-W

NOTES:

- PRODUCT NUMBERING CODE:  
50004 - X YYY Z LF  
LEAD FREE (OPTIONAL WITH GTX VERSION)  
TAIL LENGTH (NOTE 4)  
NO. OF POSITIONS (NOTE 2)  
PLATING (SEE TABLE)  
BASE NUMBER
- THIS PRODUCT IS CONFIGURED IN SIZES OF 20 THRU 122 COLUMNS IN INCREMENTS OF TWO.  
i.e.: 20,22,24,26.....118,120,122.
- HOUSING MATERIAL: GLASS AND MINERAL FILLED THERMOPLASTIC.  
CONTACT MATERIAL: BeCu
- "Z" - TAIL LENGTH OPTIONS:  
E = .125±.010 / 3.18±.25  
F = .145±.010 / 3.68±.25  
H = .180±.010 / 4.57±.25
- COMPANY NAME, PART NUMBER AND LOT CODE TO APPEAR ON THIS SURFACE PER BUS-12-108.
- DIMENSION "A" CALCULATION = .100 (2.54) X NO. OF COLUMNS + 1.05 (26.7)
- DIMENSION "B" CALCULATION = .100 (2.54) X NO. OF COLUMNS + .750 (19.05)
- DIMENSION "C" CALCULATION = .100 (2.54) X NO. OF COLUMNS DIVIDED BY 2 - .100 (2.54)
- PRODUCT WITH "LF" SUFFIX MEETS EUROPEAN UNION DIRECTIVES AND OTHER COUNTRY REGULATIONS AS DESCRIBED IN GS-22-008.
- THIS HOUSING WILL WITHSTAND EXPOSURE TO 260 DEGREES C PEAK TEMPERATURE FOR 10 - 30 SECONDS IN A CONVECTION, INFRA-RED OR VAPOR PHASE REFLOW OVEN.
- PLATING OPTION:  
MAY BE EITHER GOLD OR GXT PLATED AT MANUFACTURER'S OPTION.

|             |          |          |      |                                       |             |            |  |
|-------------|----------|----------|------|---------------------------------------|-------------|------------|--|
| mat'l. code |          | NOTE 3   |      | surface                               | tolerance   | projection | product family                                   |
| ISO 406     |          | ISO 1101 |      | ISO 1902                              | ISO 406     | ISO 1101   | HPC  |
| ltr         | ecn no   | dr       | date | tolerances unless otherwise specified |             |            | title  |
| M           |          |          |      | angles                                | linear      | INCH/MM    | 4 ROW R/A RECEPTACLE<br>SOLDER TAIL, 1 GUIDE PIN |
|             |          |          |      | $\sigma \pm z$                        |             | scale 1:1  | dwg no   |
|             |          |          |      | dr                                    | D. SHEAFFER | 1/07/90    | sheet 2 of 2                                     |
|             |          |          |      | engr                                  | S. CLARK    | 1/07/90    | size   |
|             |          |          |      | chr                                   | S. CLARK    | 1/07/90    | A3   |
|             |          |          |      | appd                                  | S. CLARK    | 1/07/90    | type   |
| sheet       | revision |          |      |                                       |             |            | Product Customer Drawing                         |
| index       | sheet    |          |      |                                       |             |            |  |