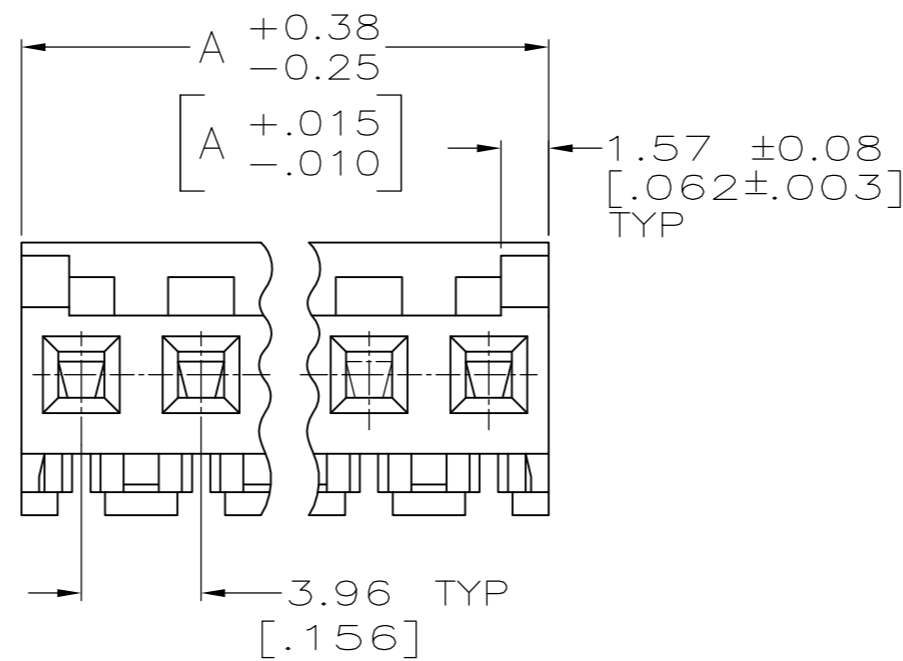
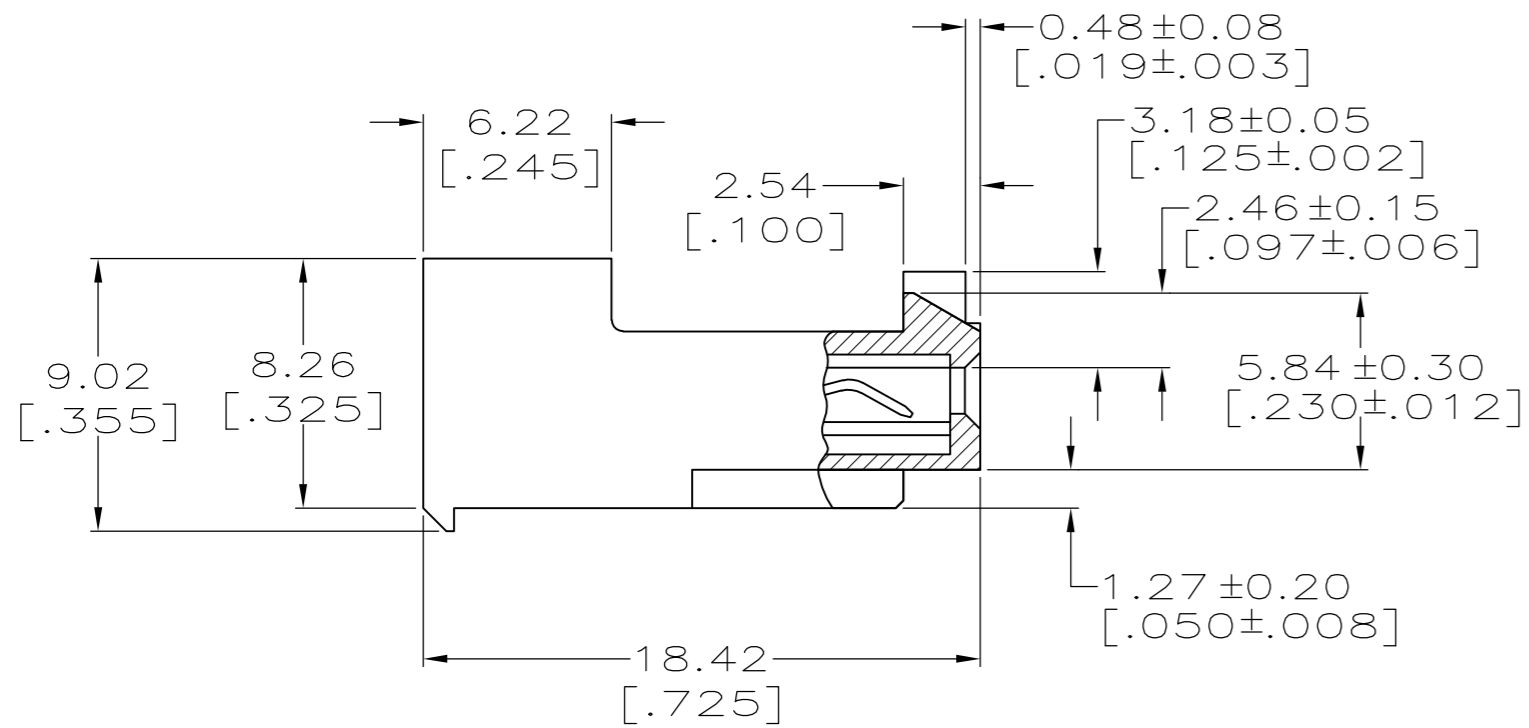
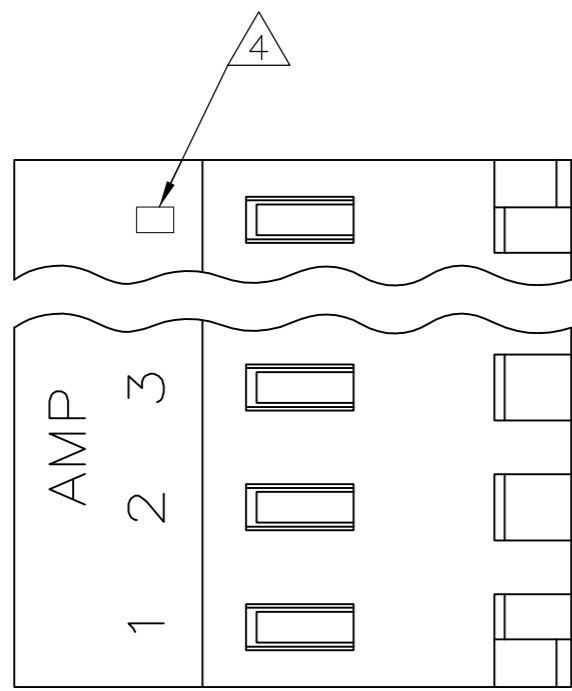


THIS DRAWING IS UNPUBLISHED. RELEASED FOR PUBLICATION
 © COPYRIGHT - By - ALL RIGHTS RESERVED.

LOC	DIST	REVISIONS					
CM	0	P	LTR	DESCRIPTION	DATE	DWN	APVD
		H		REVISED PER ECO-12-007612	03AUG12	KH	SM



- 1 MATERIAL:
CONNECTOR - NYLON UL94V-2.
CONTACTS - 0.30[.012] THICK COPPER ALLOY.
PLATING - 0.00076[.000030] GOLD THK OR 0.00008[.000003] MIN THK GOLD FLASH OVER 0.00068[.000027] THK PALLADIUM NICKEL, PER TE CONNECTIVITY'S DISCRETION. IN CONTACT AREA. 0.00203[.000080] MIN THICKNESS BRIGHT TIN LEAD IN SLOT AREA FOR 641148-2 THRU 2-641148-4 OR MATTE WHISKER MITIGATED TIN IN SLOT AREA FOR 3-641148-2 THRU 5-641148-4 OVER NICKEL UNDERPLATE.
- 2 CONTACTS ACCEPT 18 AWG WIRE WITH 2.41[.095] MAX INSULATION DIAMETER.
- 3 CONTACTS MUST ACCEPT 1.14±0.03[.045±.001] SQUARE POST AND REMAIN LOCKED IN POSITION.
- 4 IDENTIFICATION NUMBER FOR LAST CIRCUIT MAY NOT APPEAR ON ALL ASSEMBLIES.
- 5 DIMENSIONS IN BRACKETS ARE IN INCHES.
- 6 HOUSING FEATURES ARE: CLOSED END WITH LOCKING RAMP AND POLARIZING TAB.
- 7 ORANGE COLOR STRIPE ON HOUSING (NOT SHOWN) MAY RUN DOWN BETWEEN RIBS.
- 8 NOTE DELTED.
- 9 OBSOLETE PARTS: OBSOLETE CIS STREAMLINING PER D.RENAUD/D.SINISI

METRIC

CONTACT FINISH	DIM A	NO. OF CIRCUITS	PART NO.
TIN	47.55 [1.872]	12	4-644284-2
	43.59 [1.716]	11	4-644284-1
	39.62 [1.560]	10	4-644284-0
	35.66 [1.404]	9	3-644284-9
	31.70 [1.248]	8	3-644284-8
	27.74 [1.092]	7	3-644284-7
	23.77 [.936]	6	3-644284-6
	19.81 [.780]	5	3-644284-5
	15.85 [.624]	4	3-644284-4
	11.89 [.468]	3	3-644284-3
	7.92 [.312]	2	3-644284-2
	TIN-LEAD	47.55 [1.872]	12
43.59 [1.716]		11	1-644284-1
39.62 [1.560]		10	1-644284-0
35.66 [1.404]		9	644284-9
31.70 [1.248]		8	644284-8
27.74 [1.092]		7	644284-7
23.77 [.936]		6	644284-6
19.81 [.780]		5	644284-5
15.85 [.624]		4	644284-4
11.89 [.468]		3	644284-3
7.92 [.312]		2	644284-2

- 9 SUPERSEDED
- 9 SUPERSEDED
- 9 SUPERSEDED
- 9 SUPERSEDED
- 9 SUPERSEDED

THIS DRAWING IS A CONTROLLED DOCUMENT.

DWN B. LEWIS 2-12-91
 CHK R. SWING 2-12-91

TE Connectivity

MTA 156 CONNECTOR ASSEMBLY, 18 AWG, STANDARD

PRODUCT SPEC 108-1051
 APPLICATION SPEC 114-1020

SIZE A2 CAGE CODE 00779 DRAWING NO C-644284 RESTRICTED TO -

MATERIAL - FINISH - WEIGHT - SCALE 4:1 SHEET 1 OF 1 REV H

CUSTOMER DRAWING