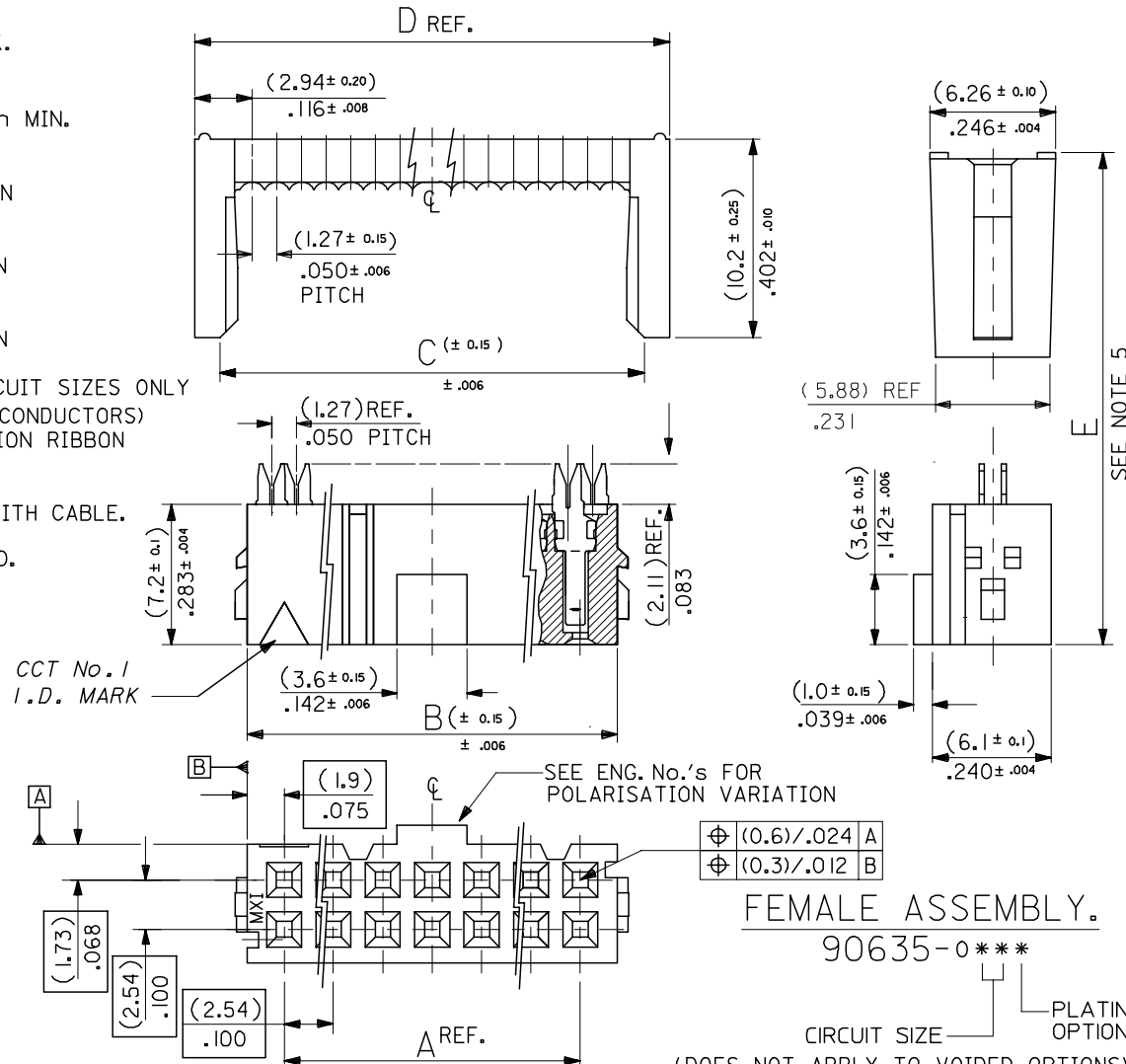


10 9 8 7 6 5 4 3 2 1

- NOTES: 1. MATERIAL:  
 HOUSING: POLYESTER, G.F. (UL 94V-0), COLOUR - BLACK.  
 TERMINAL: PHOSPHOR BRONZE.
2. TERMINAL PLATING:  
 90635-\*\*\*1 : CONTACT AREA: GOLD FLASH (0.1um)/ 4uIn MIN.  
 I.D. AREA: TIN (1um)/ 39uIn MIN. OVER  
 NICKEL (1um)/ 39uIn MIN.  
 90635-\*\*\*2 : CONTACT AREA: GOLD (0.76um)/ 30uIn MIN  
 I.D. AREA: TIN (1um)/ 39uIn MIN. OVER  
 NICKEL (1um)/ 39uIn MIN.  
 90635-\*\*\*3 : CONTACT AREA: GOLD (0.38um)/ 15uIn MIN  
 I.D. AREA: TIN (1um)/ 39uIn MIN. OVER  
 NICKEL (1um)/ 39uIn MIN.  
 90635-\*\*\*4 : CONTACT AREA: GOLD (0.51um)/ 20uIn MIN  
 I.D. AREA: TIN (1um)/ 39uIn MIN. OVER  
 NICKEL (1um)/ 39uIn MIN.. 20 & 50 CIRCUIT SIZES ONLY
3. FOR USE WITH No. 26 & 28 AWG STRANDED WIRE (7 CONDUCTORS)  
 AND No. 28 SOLID WIRE 1.14/(.045) DIA. MAX. INSULATION RIBBON  
 CABLE WITH 1.27/(.050) CENTERS.
4. MATING STRAIN RELIEF: MOLEX No. 90170.
5. DIMENSION "E" IS TOTAL HEIGHT AFTER ASSEMBLED WITH CABLE.  
 E = 10.5/(.413) REF. WITHOUT STRAIN RELIEF.  
 E = (15.2)/.598 MAX. WITH STRAIN RELIEF No. 90170.  
 (14.5)/.571 REF. WHEN COMPRESSED .
6. FOR PRODUCT SPECIFICATION, SEE PS 99020-0015.



|                |           |                  |                  |                  |                  |
|----------------|-----------|------------------|------------------|------------------|------------------|
| 64             | 90635-64* | (78.74)<br>3.100 | (82.54)<br>3.250 | (83.31)<br>3.280 | (85.88)<br>3.381 |
| 60             | 90635-60* | (73.66)<br>2.900 | (77.46)<br>3.050 | (78.23)<br>3.080 | (80.80)<br>3.181 |
| 50             | 90635-50* | (60.96)<br>2.400 | (64.76)<br>2.55  | (65.53)<br>2.580 | (68.10)<br>2.681 |
| 40             | 90635-40* | (48.26)<br>1.900 | (52.06)<br>2.050 | (52.83)<br>2.080 | (55.40)<br>2.181 |
| 34             | 90635-34* | (40.64)<br>1.600 | (44.44)<br>1.750 | (45.21)<br>1.780 | (47.78)<br>1.881 |
| 30             | 90635-30* | (35.56)<br>1.400 | (39.36)<br>1.550 | (40.13)<br>1.580 | (42.70)<br>1.681 |
| 26             | 90635-26* | (30.48)<br>1.200 | (34.28)<br>1.350 | (35.05)<br>1.380 | (37.62)<br>1.481 |
| 24             | 90635-24* | (27.94)<br>1.100 | (31.74)<br>1.250 | (32.51)<br>1.280 | (35.08)<br>1.381 |
| 20             | 90635-20* | (22.86)<br>.900  | (26.66)<br>1.050 | (27.43)<br>1.080 | (30.00)<br>1.181 |
| 16             | 90635-16* | (17.78)<br>.700  | (21.58)<br>.850  | (22.35)<br>.880  | (24.92)<br>.981  |
| 14             | 90635-14* | (15.24)<br>.600  | (19.04)<br>.750  | (19.81)<br>.780  | (22.38)<br>.881  |
| 10             | 90635-10* | (10.16)<br>.400  | (13.96)<br>.550  | (14.73)<br>.580  | (17.30)<br>.681  |
| NO. OF<br>CKT. | ENG. NO.  | A                | B                | C                | D REF.           |

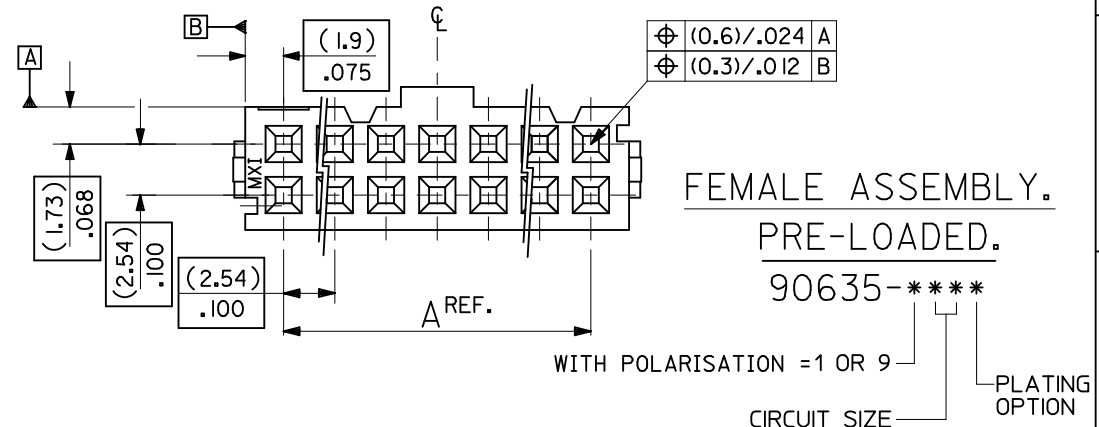
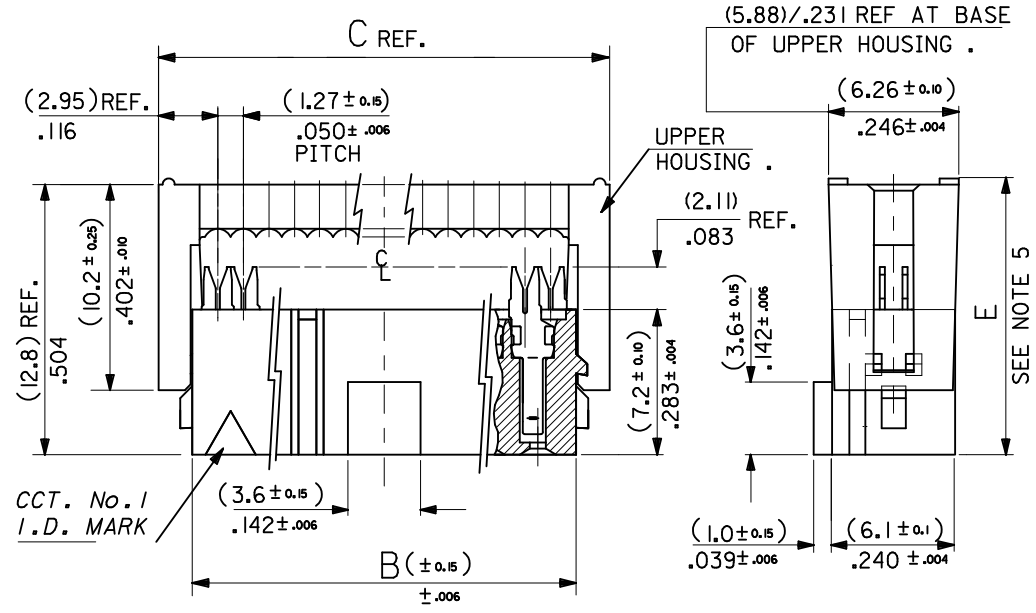
FEMALE ASSEMBLY.  
 90635-0\*\*\*

CIRCUIT SIZE PLATING OPTION  
 (DOES NOT APPLY TO VOIDED OPTIONS)

|   |                               |  |                      |                          |                     |                    |                        |                        |
|---|-------------------------------|--|----------------------|--------------------------|---------------------|--------------------|------------------------|------------------------|
| REMOVED POLARISATION EC NO: E2007-0495<br>DRWN:DBYRNES 2006/12/06<br>CHKD: 2006/12/07<br>APPR:EDMAMONY 2006/12/07 | QUALITY SYMBOLS<br>▽=0<br>▽=0 | GENERAL TOLERANCES (UNLESS SPECIFIED)                |                      | DIMENSION STYLE<br>MM/IN |                     | SCALE<br>4:1       | DESIGN UNITS<br>METRIC | THIRD ANGLE PROJECTION |
|   |                               | 4 PLACES ± --- ± ---                                 | 3 PLACES ± --- ± --- | 2 PLACES ± --- ± ---     | 1 PLACE ± --- ± --- | ANGULAR ± ---°     | DRAWN BY<br>POB        | DATE<br>1990/09/25     |
| REV   | DESCRIPTION                   | DRAFT WHERE APPLICABLE MUST REMAIN WITHIN DIMENSIONS |                      | SEE CHART                |                     | MOLEX INCORPORATED |                        |                        |
|   |                               | MATERIAL NO.   |                      | DOCUMENT NO.             |                     | SHEET NO.          |                        |                        |
|   |                               |  |                      |                          |                     | SDA-90635          |                        |                        |
|   |                               |  |                      |                          |                     | 1 OF 3             |                        |                        |

9 8 7 6 5 4 3 2 1

- NOTES: 1. MATERIAL:  
 HOUSING: POLYESTER, G.F. (UL 94V-0), COLOUR - BLACK.  
 TERMINAL: PHOSPHOR BRONZE.
2. TERMINAL PLATING:  
 90635-\*\*\*1 : CONTACT AREA: GOLD FLASH (0.1um)/ 4uIn MIN.  
 I.D. AREA: TIN (lum)/ 39uIn MIN. OVER  
 NICKEL (lum)/ 39uIn MIN.  
 90635-\*\*\*2 : CONTACT AREA: GOLD (0.76um)/ 30uIn MIN  
 I.D. AREA: TIN (lum)/ 39uIn MIN. OVER  
 NICKEL (lum)/ 39uIn MIN.  
 90635-\*\*\*3 : CONTACT AREA: GOLD (0.38um)/ 15uIn MIN  
 I.D. AREA: TIN (lum)/ 39uIn MIN. OVER  
 NICKEL (lum)/ 39uIn MIN.  
 90635-\*\*\*4 : CONTACT AREA: GOLD (0.5lum)/ 20uIn MIN  
 I.D. AREA: TIN (lum)/ 39uIn MIN. OVER  
 NICKEL (lum)/ 39uIn MIN.  
 20 & 50 CIRCUIT SIZES ONLY.
3. FOR USE WITH No. 26 & 28 AWG STRANDED WIRE (7 CONDUCTORS)  
 AND No. 28 SOLID WIRE 1.14/(.045) DIA. MAX. INSULATION RIBBON  
 CABLE WITH 1.27/(.050) CENTERS.
4. MATING STRAIN RELIEF: MOLEX No. 90170.
5. DIMENSION "E" IS TOTAL HEIGHT AFTER ASSEMBLED WITH CABLE.  
 E = 10.5/(.413) REF. WITHOUT STRAIN RELIEF.  
 E = (15.2)/.598 MAX. WITH STRAIN RELIEF No. 90170.  
 (14.5)/.571 REF. WHEN COMPRESSED.
6. FOR PRODUCT SPECIFICATION, SEE PS 99020-0015.



|                |                                   |                  |                  |                  |
|----------------|-----------------------------------|------------------|------------------|------------------|
| 64             | 90635-64*                         | (78.74)<br>3.100 | (82.54)<br>3.250 | (85.88)<br>3.381 |
| 60             | 90635-60*                         | (73.66)<br>2.900 | (77.46)<br>3.050 | (80.80)<br>3.181 |
| 50             | 90635-50*                         | (60.96)<br>2.400 | (64.76)<br>2.55  | (68.10)<br>2.681 |
| 40             | 90635-40*                         | (48.26)          | (52.06)          | (55.40)          |
|                | 90635-9402<br>(CUSTOMER SPECIFIC) | 1.900            | 2.050            | 2.181            |
| 34             | 90635-34*                         | (40.64)<br>1.600 | (44.44)<br>1.750 | (47.78)<br>1.881 |
| 30             | 90635-30*                         | (35.56)<br>1.400 | (39.36)<br>1.550 | (42.70)<br>1.681 |
| 26             | 90635-26*                         | (30.48)<br>1.200 | (34.28)<br>1.350 | (37.62)<br>1.481 |
| 24             | 90635-24*                         | (27.94)<br>1.100 | (31.74)<br>1.250 | (35.08)<br>1.381 |
| 20             | 90635-20*                         | (22.86)<br>.900  | (26.66)<br>1.050 | (30.00)<br>1.181 |
| 16             | 90635-16*                         | (17.78)<br>.700  | (21.58)<br>.850  | (24.92)<br>.981  |
| 14             | 90635-14*                         | (15.24)<br>.600  | (19.04)<br>.750  | (22.38)<br>.881  |
| 10             | 90635-10*                         | (10.16)<br>.400  | (13.96)<br>.550  | (17.30)<br>.681  |
| NO. OF<br>CKT. | ENG. NO.                          | A                | B                | C                |

| REMOVED OPTION<br>EC NO: E2007-0495<br>DRW: DBYRMS 2006/12/06<br>CHKD: 2006/12/07<br>APPR: EOMAHONY 2006/12/07 | QUALITY SYMBOLS           | GENERAL TOLERANCES (UNLESS SPECIFIED)   | DIMENSION STYLE | SCALE   | DESIGN UNITS | THIRD ANGLE PROJECTION |       |       |          |       |       |          |       |       |         |       |       |       |     |        |  |
|--|---------------------------|---|-----------------|---|--------------|------------------------|-------|-------|----------|-------|-------|----------|-------|-------|---------|-------|-------|-------|-----|--------|--|
|  | <p>▽ = 0</p> <p>∇ = 0</p> | <table border="1"> <tr> <th></th> <th>mm</th> <th>INCH</th> </tr> <tr> <td>4 PLACES</td> <td>± ---</td> <td>± ---</td> </tr> <tr> <td>3 PLACES</td> <td>± ---</td> <td>± ---</td> </tr> <tr> <td>2 PLACES</td> <td>± ---</td> <td>± ---</td> </tr> <tr> <td>1 PLACE</td> <td>± ---</td> <td>± ---</td> </tr> </table> |                 | mm  | INCH         | 4 PLACES               | ± --- | ± --- | 3 PLACES | ± --- | ± --- | 2 PLACES | ± --- | ± --- | 1 PLACE | ± --- | ± --- | MM/IN | 4:1 | METRIC |  |
|  |                           | mm  | INCH            |   |              |                        |       |       |          |       |       |          |       |       |         |       |       |       |     |        |  |
| 4 PLACES   | ± ---                     | ± ---   |                 |   |              |                        |       |       |          |       |       |          |       |       |         |       |       |       |     |        |  |
| 3 PLACES   | ± ---                     | ± ---   |                 |   |              |                        |       |       |          |       |       |          |       |       |         |       |       |       |     |        |  |
| 2 PLACES   | ± ---                     | ± ---   |                 |   |              |                        |       |       |          |       |       |          |       |       |         |       |       |       |     |        |  |
| 1 PLACE  | ± ---                     | ± ---   |                 |   |              |                        |       |       |          |       |       |          |       |       |         |       |       |       |     |        |  |
| DESCRIPTION  | DRAWN BY                  | DATE  | TITLE           | QIK FLECS SINGLE BEAM FEMALE ASSEMBLY, PRE-LOADED   |              |                        |       |       |          |       |       |          |       |       |         |       |       |       |     |        |  |
|  | POB                       | 1990/09/25  |                 | MOLEX INCORPORATED  |              |                        |       |       |          |       |       |          |       |       |         |       |       |       |     |        |  |
|  | CHECKED BY                | DATE  |                 | DOCUMENT NO.  |              |                        |       |       |          |       |       |          |       |       |         |       |       |       |     |        |  |
|  | JDENNEHY                  | 2005/08/10  |                 | SDA-90635   |              |                        |       |       |          |       |       |          |       |       |         |       |       |       |     |        |  |
|  | APPROVED BY               | DATE  |                 | SHEET NO.   |              |                        |       |       |          |       |       |          |       |       |         |       |       |       |     |        |  |
|  | JDENNEHY                  | 2005/08/10  |                 | 2 OF 3  |              |                        |       |       |          |       |       |          |       |       |         |       |       |       |     |        |  |
|  | MATERIAL NO.              |   |                 | THIS DRAWING CONTAINS INFORMATION THAT IS PROPRIETARY TO MOLEX INCORPORATED AND SHOULD NOT BE USED WITHOUT WRITTEN PERMISSION |              |                        |       |       |          |       |       |          |       |       |         |       |       |       |     |        |  |
|  | SIZE                      |   |                 |   |              |                        |       |       |          |       |       |          |       |       |         |       |       |       |     |        |  |
|  | A3                        |   |                 |   |              |                        |       |       |          |       |       |          |       |       |         |       |       |       |     |        |  |