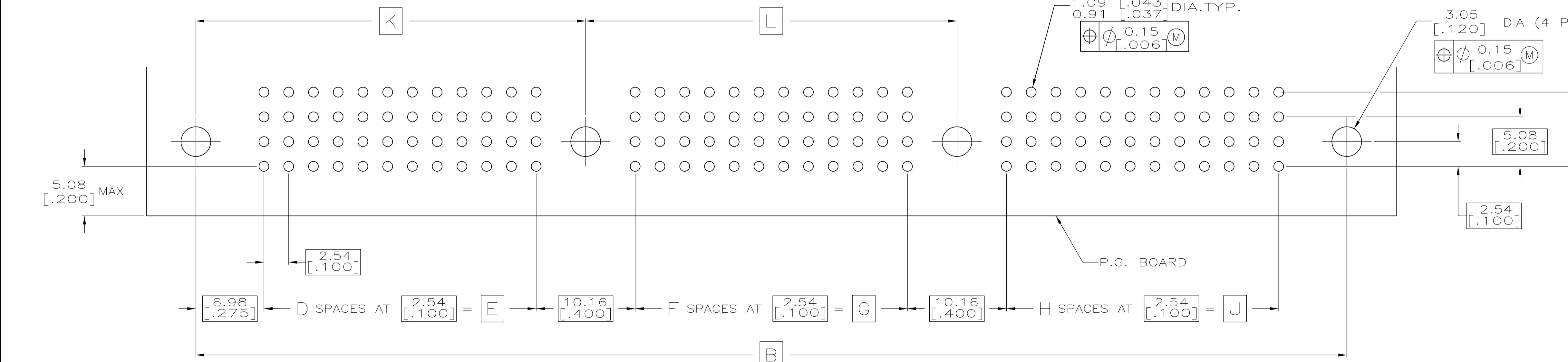
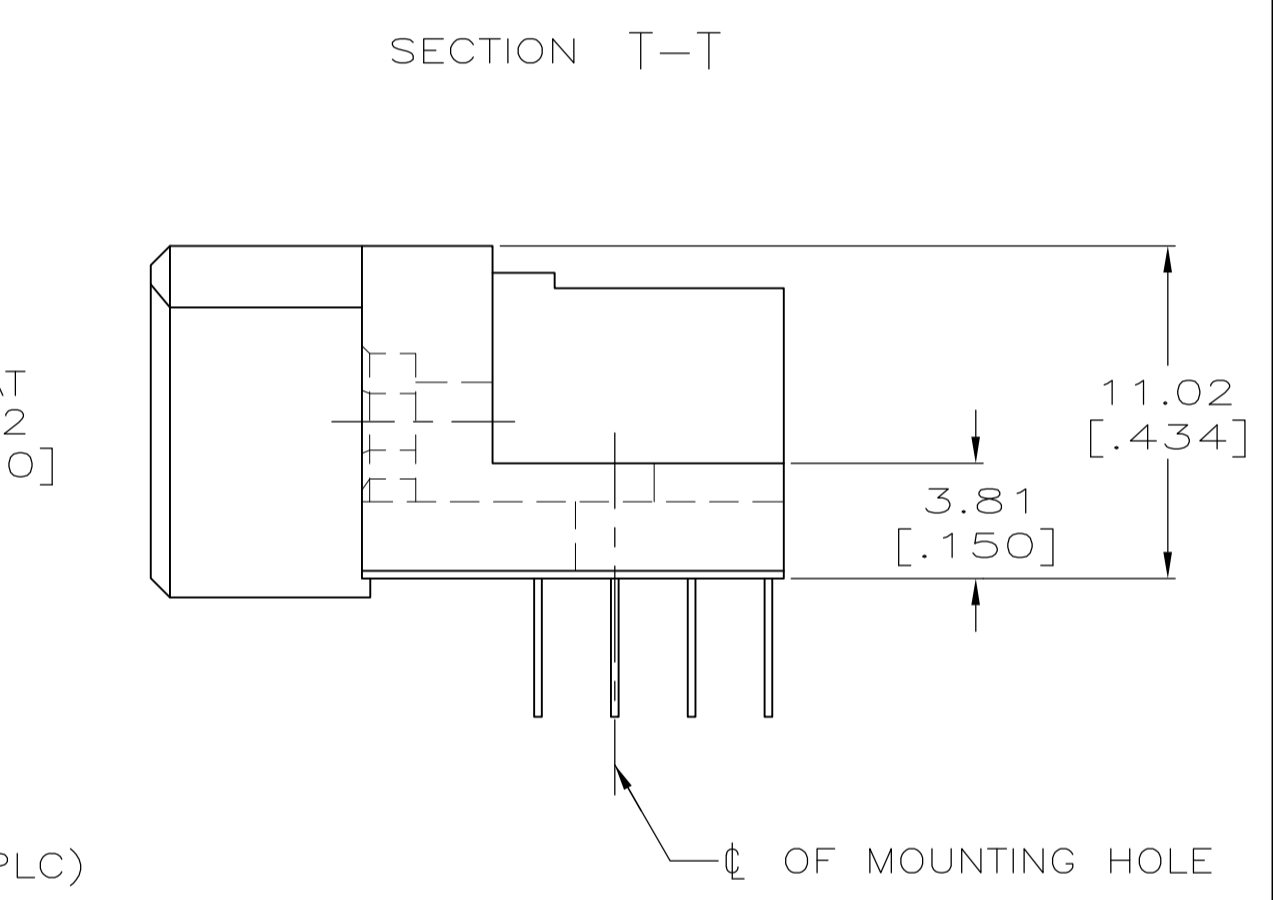
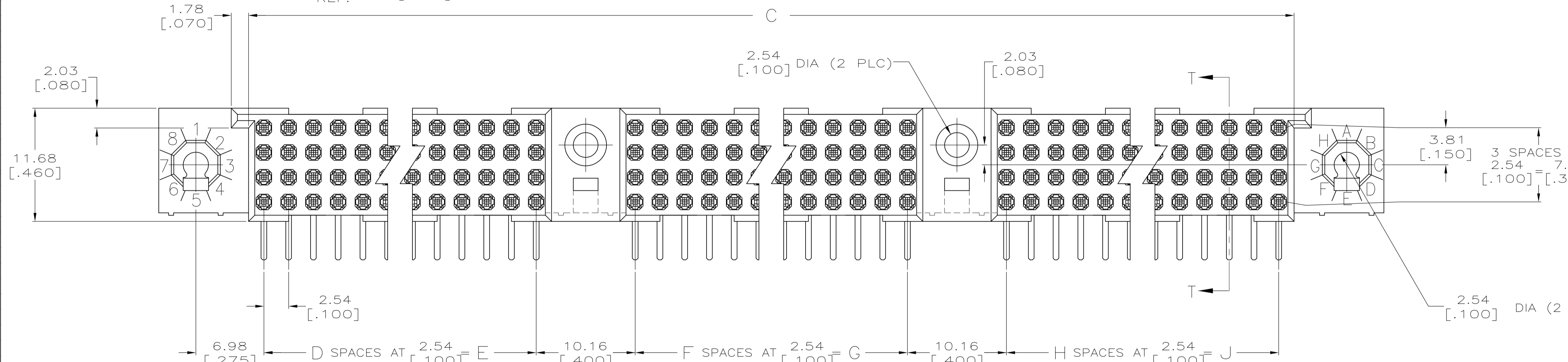
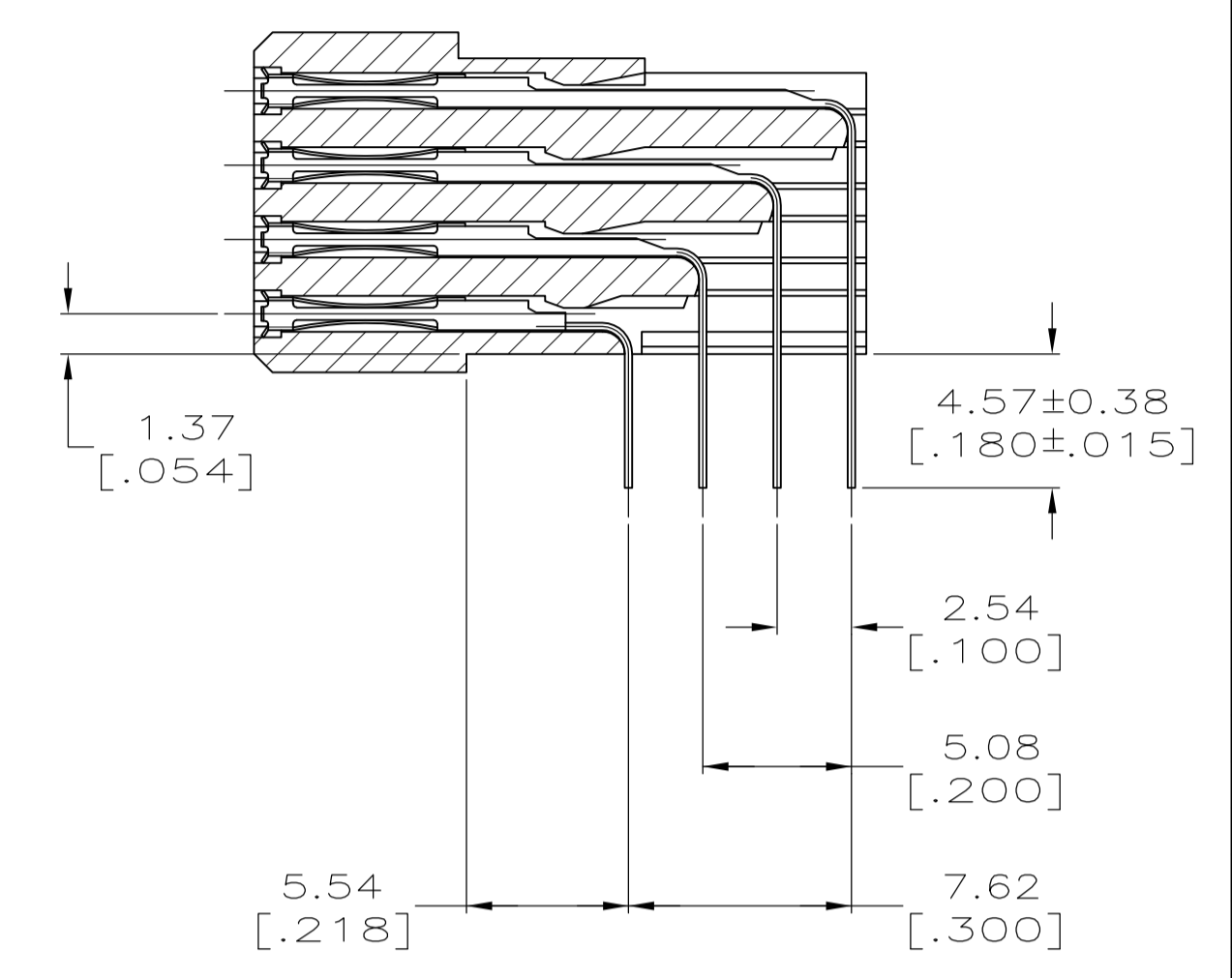
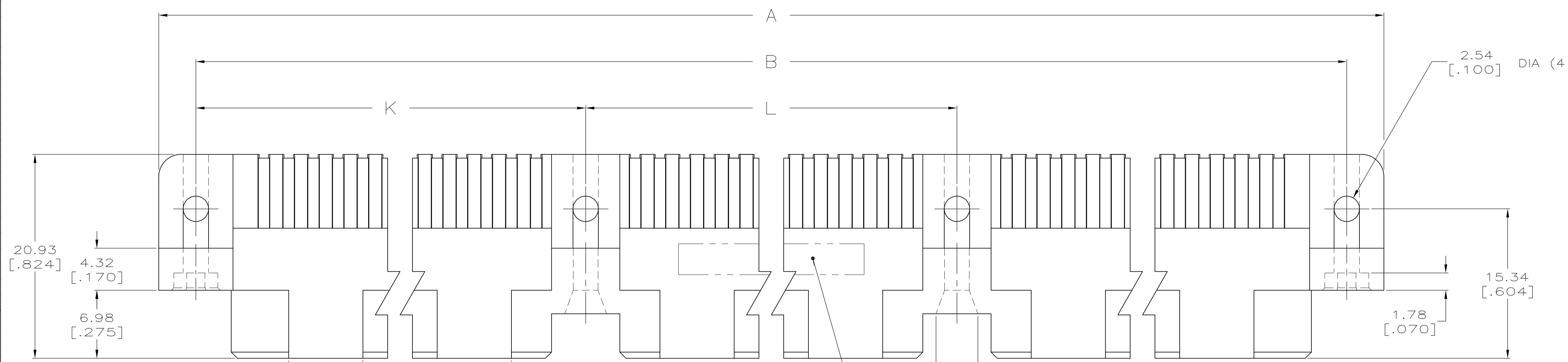


LOC		DIST		REVISIONS			
P	LTR	DESCRIPTION	DATE	DNW	APVD		
M		REVISED PER EC 0512-0287-05	10DEC05	JDP	AMS		
M1		REVISED PER ECO-09-021510	11SEP09	KK	AEG		



RECOMMENDED P.C. BOARD LAYOUT

THIS DRAWING IS A CONTROLLED DOCUMENT.		DIN R.K. SEIFRIED 06/21/90	Tyco Electronics Corporation Harrisburg, PA 17105-3608
TOLERANCES UNLESS OTHERWISE SPECIFIED:		CHK G.E. SKIPPER 3/29/94	
DIMENSIONS: mm [INCHES]		APVD	NAME
0 PLC ± -			PRODUCT SPEC
1 PLC ± -			APPLICATION SPEC
2 PLC ± -			
3 PLC ± 0.13 [.005]			
4 PLC ± -			
ANGLES ± -			
MATERIAL	FINISH	WEIGHT	RESTRICTED TO
1 2	3	A1 00779 C=532840	
CUSTOMER DRAWING		SCALE 4:1	SHEET 1 OF 2 REV M1

- ① HOUSING MATERIAL: THERMOPLASTIC, COLOR-NATURAL.
- ② CONTACT MATERIAL: COPPER ALLOY.
- ③ CONTACT FINISH: .00127-.00254 [.000050-.000100] NICKEL UNDERPLATE ALL OVER; .00076 [.000030] GOLD PLATE IN CONTACT AREA, TIN-LEAD PLATED SOLDER TAILS.
- ④ SOLDER TAILS MUST FIT HOLE PATTERN AS SHOWN ON THE RECOMMENDED P.C. BOARD LAYOUT.
- 5. DIMENSIONS IN BRACKETS ARE IN INCHES.
- ⑥ PART NUMBER IS OBSOLETE.
- ⑦ QUANTITIES OF VOID CORING ARE DEPENDENT ON THE POSITION SIZE OF THE HOUSING.
- ⑧ OBSOLETE PARTS: OBSOLETE CIS STREAMLINING PER D.RENAUD/D.SINISI

⑥	99.06 [3.900]	98.42 [3.875]	86.36 [3.400]	34	88.90 [3.500]	35	86.36 [3.400]	34	285.09 [11.224]	295.91 [11.650]	303.53 [11.950]	424	532840-9
⑥	152.40 [6.000]	154.30 [6.075]	142.24 [5.600]	56	142.24 [5.600]	56	142.24 [5.600]	56	450.19 [17.724]	461.01 [18.150]	468.63 [18.450]	684	532840-8
⑥	147.32 [5.800]	149.22 [5.875]	137.16 [5.400]	54	137.16 [5.400]	54	137.16 [5.400]	54	434.95 [17.124]	445.77 [17.550]	453.39 [17.850]	660	532840-7
OBSOLETE	142.24 [5.600]	144.14 [5.675]	132.08 [5.200]	52	132.08 [5.200]	52	132.08 [5.200]	52	419.71 [16.524]	430.53 [16.950]	438.15 [17.250]	636	532840-6
⑥	137.16 [5.400]	139.06 [5.475]	127.00 [5.000]	50	127.00 [5.000]	50	127.00 [5.000]	50	404.47 [15.924]	415.29 [16.350]	422.91 [16.650]	612	532840-5
⑥	132.08 [5.200]	133.98 [5.275]	121.92 [4.800]	48	121.92 [4.800]	48	121.92 [4.800]	48	389.23 [15.324]	400.05 [15.750]	407.67 [16.050]	588	532840-4
⑥	127.00 [5.000]	128.90 [5.075]	116.84 [4.600]	46	116.84 [4.600]	46	116.84 [4.600]	46	373.99 [14.724]	384.81 [15.150]	392.43 [15.450]	564	532840-3
	121.92 [4.800]	123.82 [4.875]	111.76 [4.400]	44	111.76 [4.400]	44	111.76 [4.400]	44	358.75 [14.124]	369.57 [14.550]	377.19 [14.850]	540	532840-2
⑧ OBSOLETE	116.84 [4.600]	118.74 [4.675]	106.68 [4.200]	42	106.68 [4.200]	42	106.68 [4.200]	42	343.51 [13.524]	354.33 [13.950]	361.95 [14.250]	516	532840-1
	L	K	J	H	G	F	E	D	C	B	A	POSN	PART NUMBER

THIS DRAWING IS A CONTROLLED DOCUMENT.		DIN R.K. SEIFRIED 3/29/94	Tyco Electronics Corporation Harrisburg, PA 17105-3608
DIMENSIONS: mm [INCHES]	TOLERANCES UNLESS OTHERWISE SPECIFIED:	APVD G.E. SKIPPER	NAME
0 PLC ± -	1 PLC ± -	PRODUCT SPEC	HDI, 4 ROW, RECEPTACLE ASSEMBLY, 2 GUIDE PIN, 4 MOUNTING HOLES, 4.57 [180] LONG SOLDER TAILS.
2 PLC ± -	3 PLC ± 0.13 [.005]	APPLICATION SPEC	SIZE A1
4 PLC ± -	ANGLES ± -	WEIGHT	CAGE CODE 00779
MATERIAL ①②	FINISH ③	CUSTOMER DRAWING	DRAWING NO 532840
		SCALE 4:1	RESTRICTED TO SHEET 2 OF 2